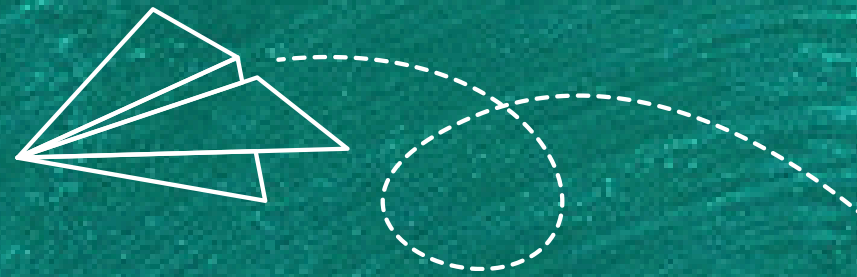




ZSKD
KRÁLŮV
DVŮR



ZSKD

Králův Dvůr

By: 9.B





ZŠ
Kralův
Dvůr



Location



Central Bohemian Region



Near by Prague



IN králův Dvůr





ZSKD
KRÁLŮV
DVŮR

Trips around the school



Králův Dvůr Castle

- is a Renaissance castle built by Jan Popel
- from 1594 the castle became royal property
- was used as a hunting lodge



Lookout tower Ded

- it is located on Děd hill near the town of Beroun
- is 12 meters high
- there are 56 stairs



Karlstejn Castle

- is originally a medieval royal castle
- is thirty kilometers southwest of the center of Prague
- in the past it was a repository for the royal crown jewels

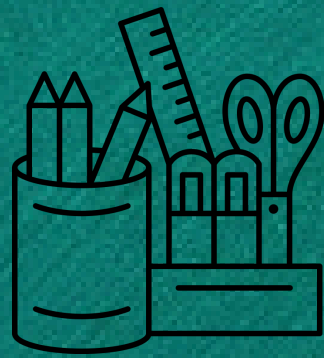


Quarry of Kosov

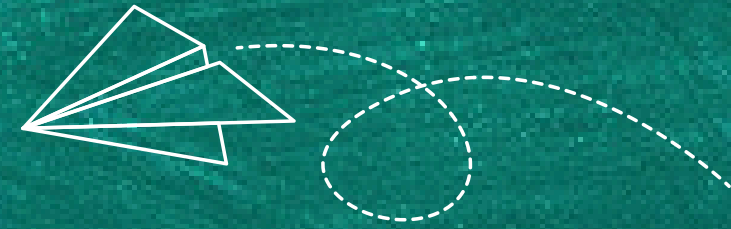
- is an abandoned excavated limestone-slate quarry
- located about 3.5 kilometers from the train station in Beroun
- was founded by the nearby cement plant in Králové Dvůr



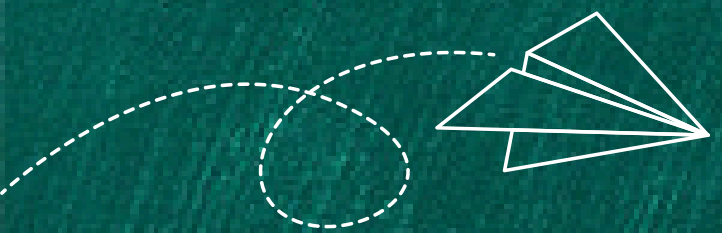
ZSKD
Králův
Dvůr



Subjects

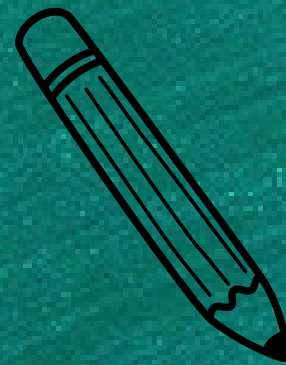


	1.	2.	3.	4.	5.	6.	7.	8.
Monday	Geography	Math	Math	English	Health education	Music		
Tuesday	Math	German	Informatics	Natural history	Natural history	Chemistry		PE
Wednesday	Geography	English	Physics	German	Czech	History		
Thursday	History	Work activities	Czech	English	Physics	Chemistry		PE
Friday	Czech	Conversation in English	Czech	Math	Financial Literacy	ART		





ZŠ
Kralupy
Dvůr

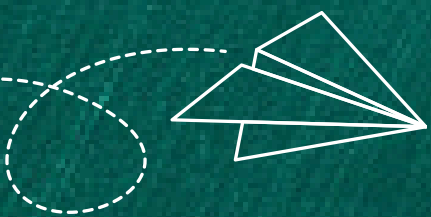
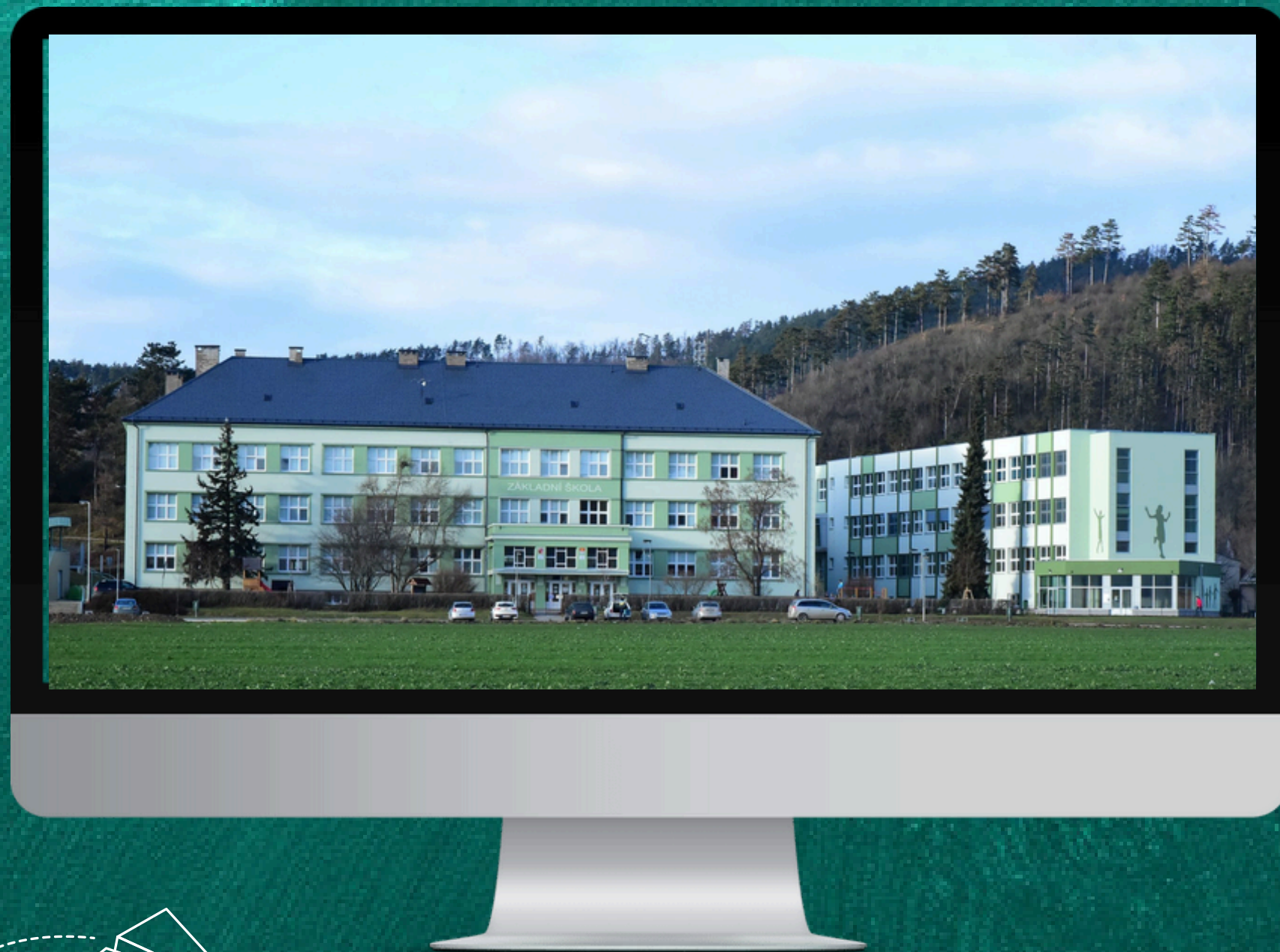


School system

9 years

1. Primary
school

2. Lower
secondary





ZŠ
Králův
Dvůr

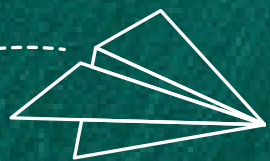


Primary
school

5 years

1th-5th grade

6-11 years old
kids





ZŠ
Králův
Dvůr

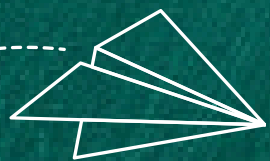


Lower
Secondary

4 years

6th-9th grade

11-16 years old
kids



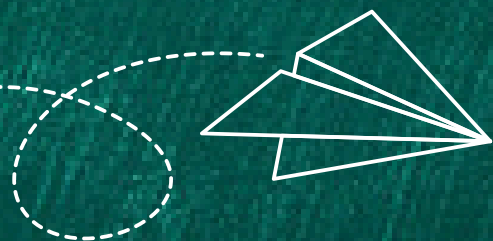


ZSKD
Králův
Dvůr

Equipment and appearance of the school



- two buildings
- glass bridge between buildings
- elevator
- 3 IT classes
- gym
- Changing room
- eating-place





ZSKD
KRÁLŮV DVŮR

Photos from our school



three floors with classes



GREEN SCREEN



GLASS BRIDGE



LIBRARY