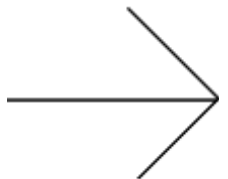




Welcome to POS Central Australia

**Barcode Scanner Solutions for Retail
and Warehouse Operations**



Introduction to Barcode Scanner Technology

A **Barcode Scanner** helps businesses capture product data quickly and accurately. It reads printed barcodes and converts them into digital information that connects directly with POS and inventory systems. Retailers and warehouses rely on this technology to manage products, orders, and stock movement efficiently.

Many modern [Barcode Scanners](#) support fast scanning, reliable connectivity, and simple integration with POS systems.

Key benefits

- Faster product identification
- Reduced manual entry errors
- Improved inventory visibility
- Better operational efficiency

Types of Barcode Scanners

Businesses can choose from several types of **Barcode Scanners** depending on their environment and scanning needs. Devices vary in scanning technology, connectivity, and durability.

The **2d barcode scanner** has become a popular choice because it reads both traditional barcodes and modern QR codes used in retail, logistics, and mobile systems.

Common options include:

- Laser and imaging scanners
- Fixed mount scanners
- **Handheld barcode scanner** devices for flexible operations
- Wired and wireless connectivity options

2D Barcode Scanner Benefits

A [2d barcode scanner](#) reads both 1D barcodes and complex codes such as QR codes and Data Matrix symbols. This capability allows businesses to manage product information, digital coupons, and tracking labels with one device.

These scanners improve operational speed and accuracy across inventory and logistics environments.

Typical advantages

- Reads damaged or small barcodes easily
- Supports modern QR code systems
- Improves inventory tracking accuracy
- Works well in retail and warehouse operations



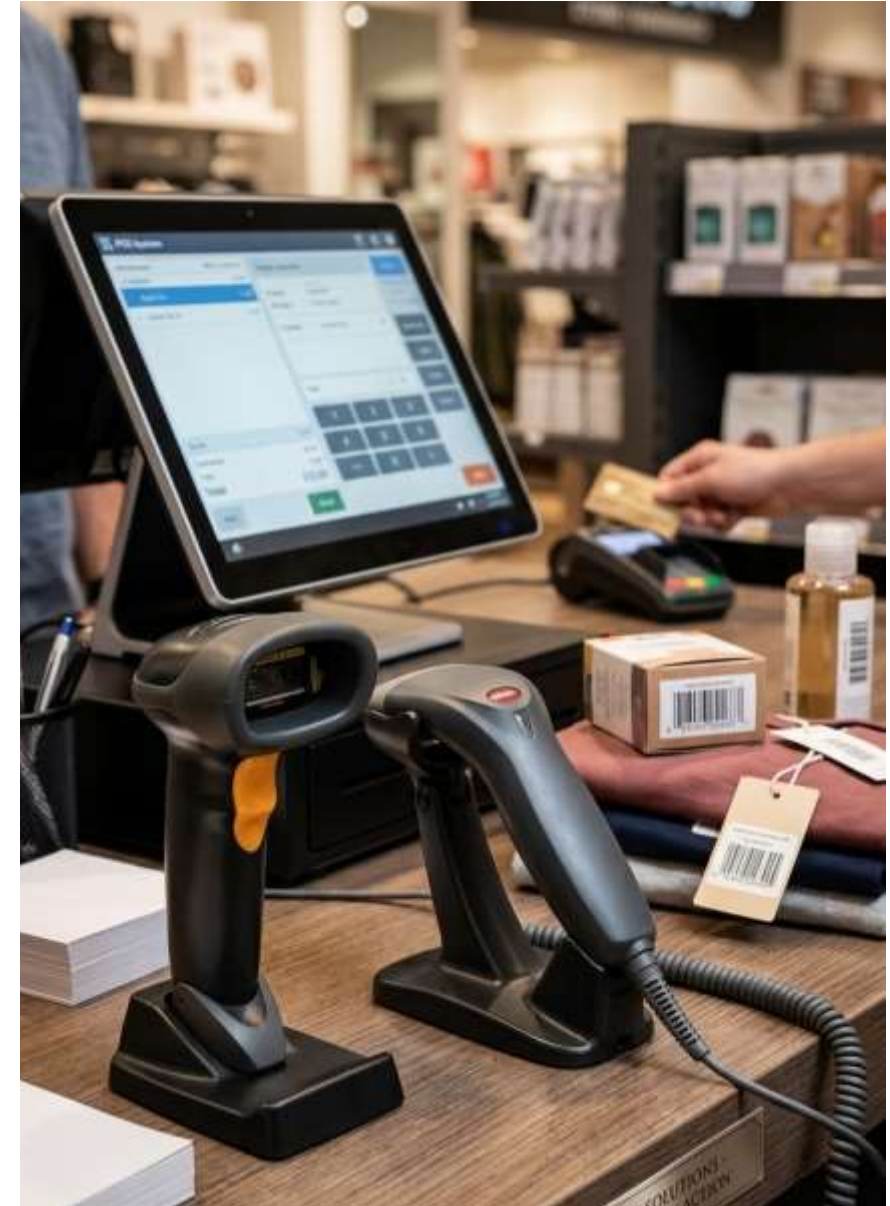
Handheld Barcode Scanner Solutions

A **handheld barcode scanner** provides flexibility for employees who need to move around sales floors, storage areas, or loading zones. Staff can quickly scan products without returning to a fixed workstation.

Many businesses prefer [handheld barcode scanners](#) because they support mobility and fast scanning in busy environments.

Common features

- Lightweight ergonomic design
- Long scanning range
- Durable construction for daily use
- Wired and **wireless barcode scanners** available



Barcode Scanner for Retail and Warehouses

A **Barcode scanner for retail** helps staff process transactions quickly at checkout counters. Faster scanning improves customer service and reduces waiting time during busy sales periods.

A **Barcode scanner for warehouses** supports accurate stock management and order fulfilment. Warehouse teams can scan items during receiving, picking, and shipping processes.

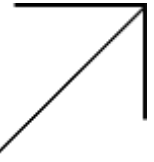
These solutions help businesses:

- Maintain accurate inventory records
- Speed up order processing
- Reduce product handling errors





Choosing the Right Barcode Scanner



Selecting the right [Barcode Scanner](#) depends on business needs, scanning environment, and product volume. Companies should evaluate durability, scanning speed, connectivity options, and compatibility with POS systems.

Many Australian businesses source reliable **Barcode Scanners** from **POS Central AU** to support retail and warehouse operations with trusted hardware solutions.

Important selection factors include:

- Wired or wireless connectivity
- Scanning range and speed
- Compatibility with POS and inventory systems
- Durability for retail or warehouse environments

Contact Us

For businesses looking to improve retail checkout or warehouse inventory accuracy, reliable **Barcode Scanners** can support efficient operations and faster product tracking.

Contact Information

Website: <https://www.poscentral.com.au>

Email: sales@poscentral.com.au

Phone: +61 489 087 085

Product Category: Barcode Scanners

Industry Use: Retail Stores, Warehouses, Logistics, Supermarkets, E-commerce Fulfilment Centres

A quality **Barcode Scanner** can improve productivity, reduce errors, and support modern business operations.