



Wow! I Made It.com

Multiple Planter

If you're looking for a really attractive way to screen a portion of your window or deck, you can't beat this multiple planter. It holds eight pots filled with your favorite sun-loving plants on its top, as well as shade-loving plants—or your favorite knickknacks—on the shelf beneath.



Special Techniques

- Ripping

Materials and Supplies

- 19 linear feet of 1 x 3 pine
- 70 linear feet of 1 x 4 pine
- 10 linear feet of 1 x 6 pine
- 12 linear feet of 1 x 10 pine
- 8 clay pots, 8" in diameter

Hardware

- Approx. 100 #6 x 1-1/4" flathead wood screws
- Approx. 250 #6 x 1-1/2" flathead wood screws

Cutting List

| Code | Description | Qty. | Material | Dimensions |
|-------------|--------------------|-------------|---------------------|-------------------|
| A | Long Inner Frame | 2 | 1 x 4 pine | 70" long |
| B | Short Inner Frame | 16 | 1 x 4 pine | 7-1/4" long |
| C | Leg | 14 | 1 x 4 pine | 31" long |
| D | Leg Spacer | 8 | 1 x 6 pine | 13-1/8" long |
| E | Short Spacer | 2 | 1 x 6 pine | 3-1/4" long |
| F | Shelf | 2 | 1 x 10 pine, ripped | 70" long |
| G | Shelf Spacer | 8 | 1 x 4 pine | 13-1/8" long |
| H | Short Shelf Spacer | 2 | 1 x 4 pine | 3-1/4" long |
| I | Long Trim | 2 | 1 x 3 pine | 75" long |
| J | Short Trim | 2 | 1 x 3 pine | 7-1/4" long |
| K | Inner Trim | 7 | 1 x 3 pine, ripped | 7-1/4" long |

Notes on Materials

Check the diameters of the pots that you intend to place in the 7-1/4"-square planter openings. You can alter the planter dimensions if you wish, but you may find that it's easier to buy pots the right size. As you can see in the photo, the wider lips of the pots rest on the shelf spacers, while the narrower portions fit into the openings between the spacers.

If you plan to use your planter outdoors, buy galvanized screws and weather-resistant lumber and finish the completed project with outdoor paint or stain.

Making the Inner Frame

1. Cut two long inner frames (A) from 1 x 4 pine; each should be 70" long.
2. Cut 16 short inner frames (B) from 1 x 4 pine; each should be 7-1/4" long.

3. Glue two short inner frames (B) together to form a double thickness, as shown in *Figure 1*, and secure them by inserting four 1-1/4" screws, one near each corner.

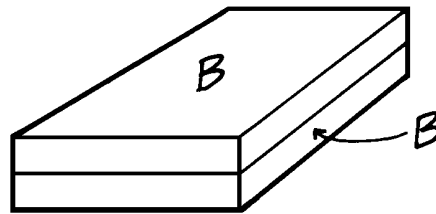


Figure 1

4. Repeat Step 3 six more times to create a total of seven double-thick short inner frames (B). You'll have two single short inner frames (B) left over.
5. Place the two long inner frames (A) on edge, parallel to each other and 7-1/4" apart. Fit the double and single short inner frames (B) between the two long inner frames (A), as shown in *Figure 2*. Note that the single short inner frames (B) are on the ends of the assembly and that each of the openings measures 7-1/4" square. Glue the long inner frames (A) to the short inner frames (B) and insert two 1-1/2" screws through the long inner frames (A) and into the ends of the short inner frames (B) at each joint.

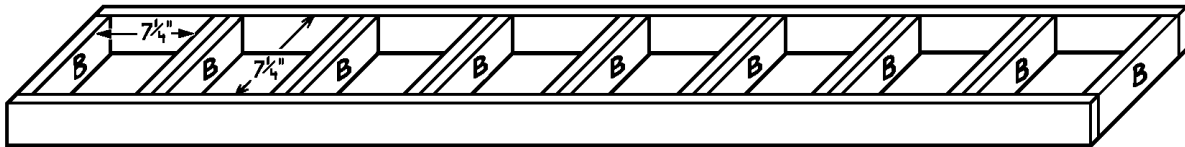


Figure 2

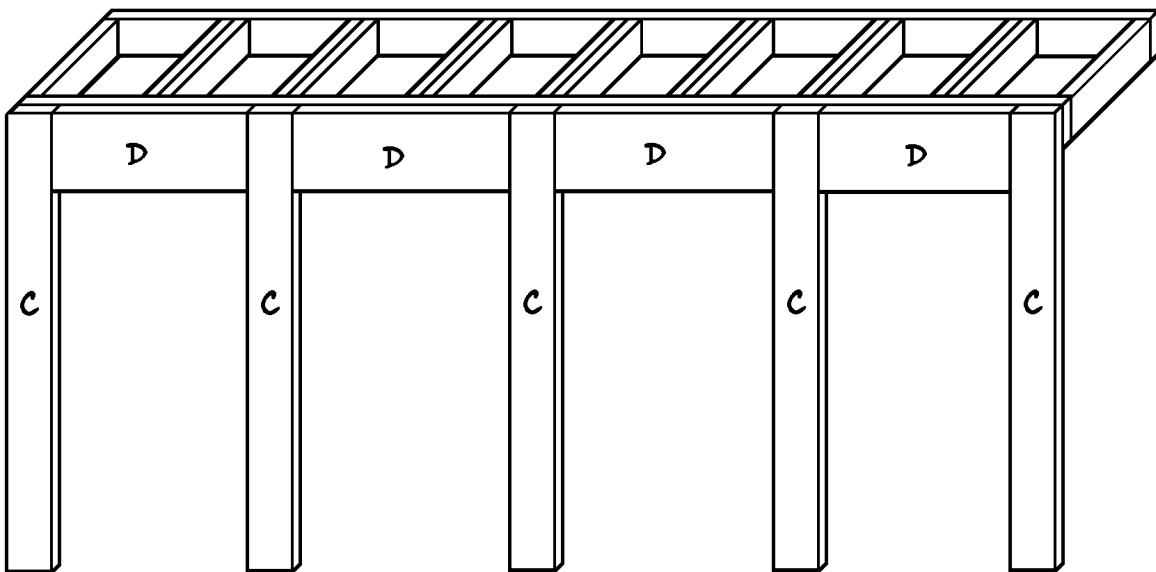


Figure 3

Adding the Legs

1. Cut fourteen 31"-long legs (C) from 1 x 4 pine.
2. Cut eight legs spacers (D) from 1 x 6 pine, each measuring 13-1/8" long.
3. To attach five legs (C) and four leg spacers (D) to one side of the inner frame, first refer to *Figure 3*. Note that the top ends of the legs (C) and the upper edges of the leg spacers (D) should be flush with the top edges of the inner frame. Glue the legs (C) and spacers (D) in place and insert two 1-1/4" screws through each leg spacer (D) into the inner frame.
4. Turn the assembly over and repeat Step 3 to attach five legs (C) and four leg spacers (D) to the other side of the inner frame.
5. Cut two short spacers (E) from 1 x 6 pine, each measuring 3-1/4" long.
6. To attach two legs (C) and one short spacer (E) to one end of the inner frame, first refer to *Figure 4*. Note that the legs (C) to be attached will overlap the edges of the legs (C) already in place. Glue the two legs (C) and short spacer (E) in place and insert two 1-1/4" screws at each joint. Also insert 1-1/2" screws to join the overlapped legs (C) together, spacing the screws about 6" apart down the length of the legs (C) you've just added.

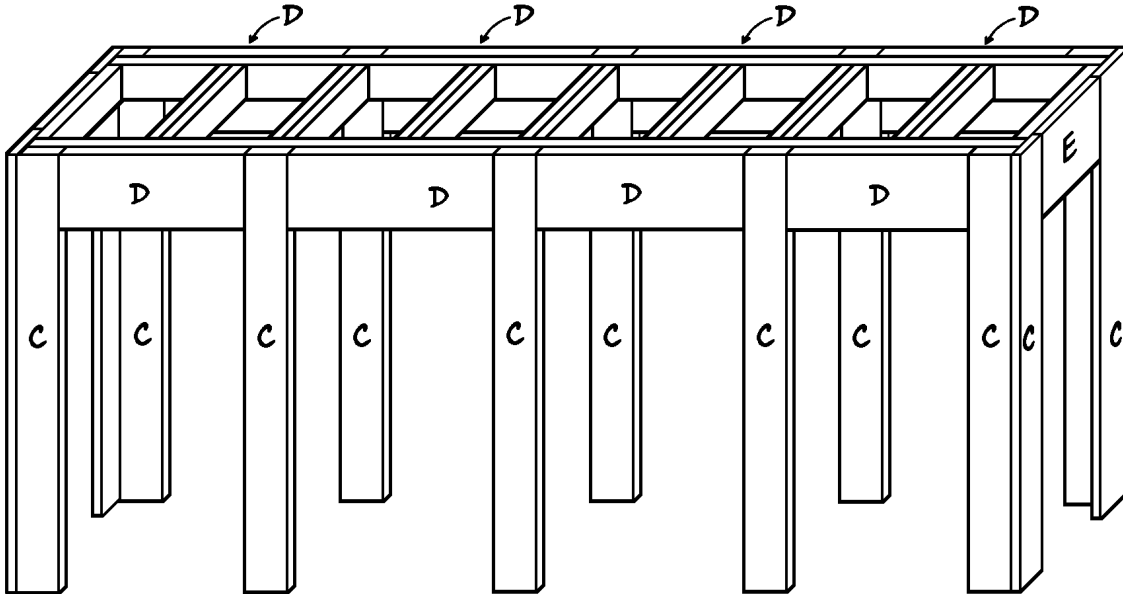


Figure 4

7. Repeat Step 6 to attach the remaining two legs (C) and short spacer (E) to the opposite end of the assembly.

Adding the Shelves

1. Rip the 12 linear feet of 1 x 10 pine to a width of 8-3/4". Then cut two 70"-long shelves (F) from the ripped boards.
2. Glue the first shelf (F) in place inside the legs (C), positioning its bottom surface flush with the lower edges of the leg spacers (D) and short spacers (E), as shown in *Figure 5*. Secure the shelf in position by inserting two 1-1/2" screws through each leg (C), each leg spacer (D), and each short spacer (E) into the edges of the shelf (F).

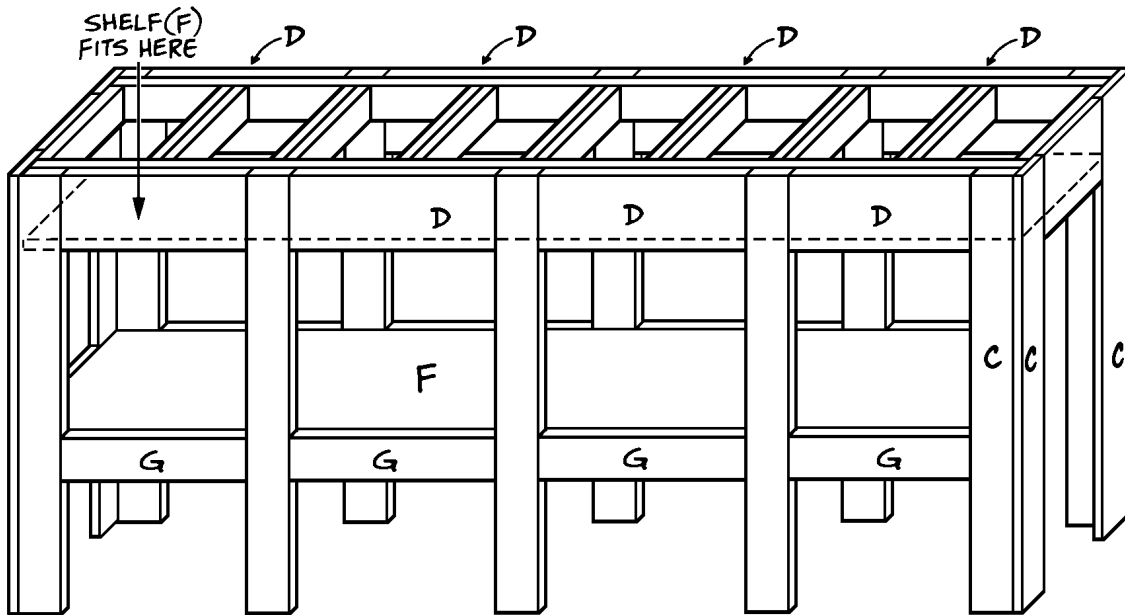


Figure 5

3. Repeat Step 2 to attach the second shelf (F), positioning it 9-3/4" from the bottoms of the legs (C).
4. Cut eight shelf spacers (G) from 1 x 4 pine, each measuring 13-1/8".
5. Position four of the shelf spacers (G) between the legs on one side of the planter, as shown in *Figure 5*, placing their upper edges flush with the top face of the lower shelf (F). Glue the shelf spacers (G) in place and secure each one with two 1-1/2" screws driven through the spacer and into the edge of the shelf (F).
6. Repeat Step 5 to attach the remaining four shelf spacers (G) to the opposite side of the planter.
7. Cut two short shelf spacers (H) from 1 x 4 pine, each measuring 3-1/4" long.

8. Glue the short shelf spacers (H) in place between the legs (C) at both ends of the planter, positioning them so that their upper edges are flush with the top of the lower shelf (F). Secure each short shelf spacer (H) to the shelf (F) with two 1-1/2" screws.

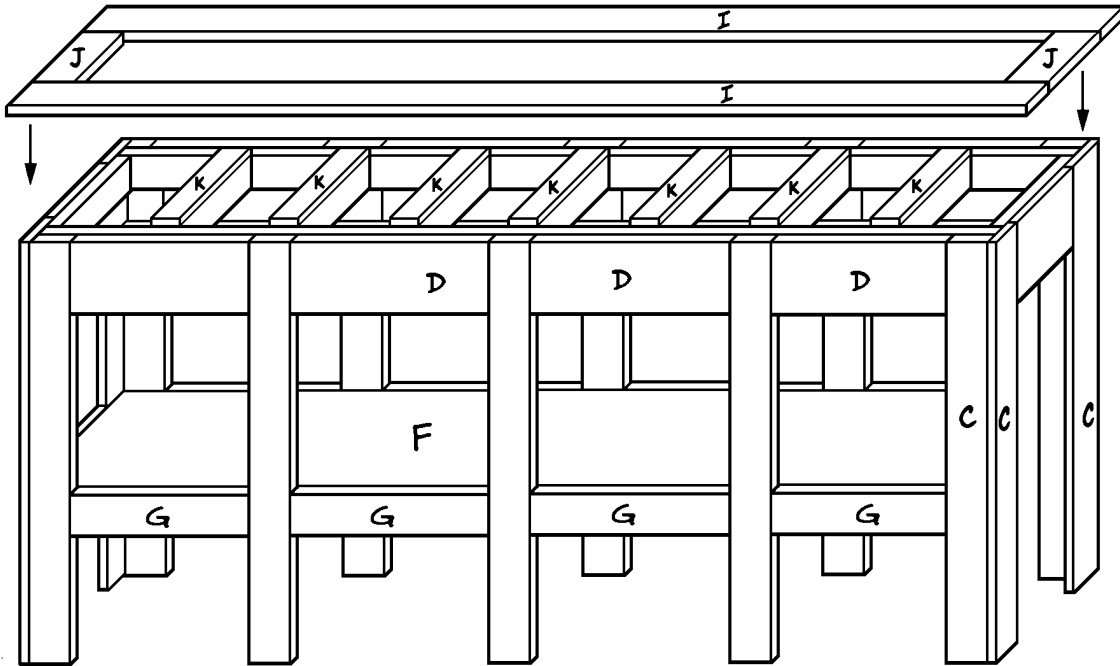


Figure 6

Adding the Top Trim

1. Cut two long trim pieces (I) from 1 x 3 pine, each measuring 75" long.
2. Cut two short trim pieces (J) from 1 x 3 pine, each measuring 7-1/4" long.
3. Rip a 52" length of 1 x 3 to a width of 1-1/2".
4. Cut seven 7-1/4"-long inner trim pieces (K) from the 1-1/2"-wide ripped pine.
5. Glue the seven inner trim pieces (K) to the top edges of the seven double-thick short inner frames (B), as shown in *Figure 6*. Insert four 1-1/2" screws through each inner trim piece (K) and into the paired short inner frames (B) beneath.
6. Glue the two short trim pieces (J) and the two long trim pieces (I) to the top edges of the planter, so that their inner edges are flush with the inner faces of the long and short inner frames (A and B). Secure the trim pieces (J and I) with 1-1/2" screws spaced about 6" apart.

Finishing

1. Fill all screws holes and crevices with the wood filler.
 2. Sand the entire planter thoroughly.
 3. Paint or stain the completed planter the color of your choice.
-

**Build many other indoor and outdoor projects from
!**

