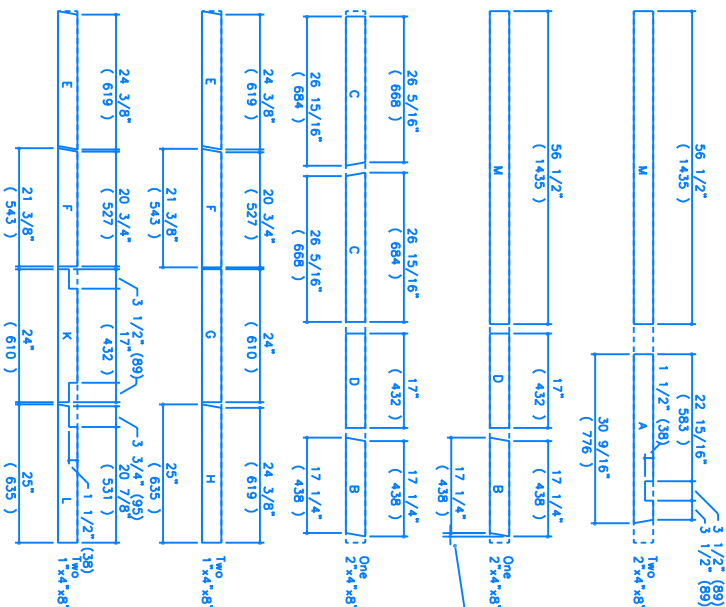


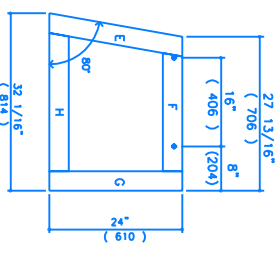
NOTICE

The purchaser agrees when purchasing this plan (the "Plan") to build or construct the object or project set out in the Plan (the "Project") for his/her/its personal use only and not for any other purpose. The Plan in whole or in part by any means whatsoever is strictly prohibited. Blueprints for the Handyman Project are not to be used to construct the Project or for any loss or damage resulting therefrom.

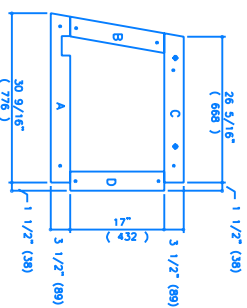
GLIDER SWING BASE



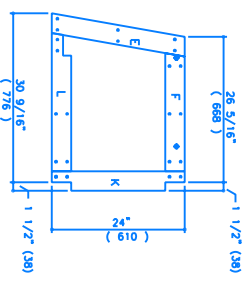
**** NOTE ****
TYPICAL DIMENSION OFFSET OF 5/8" (16) IS VALID FOR ALL ANGLED PIECES ON BOTH SIDES OF PLAN



OUTSIDE LAMINATION (EFGH)

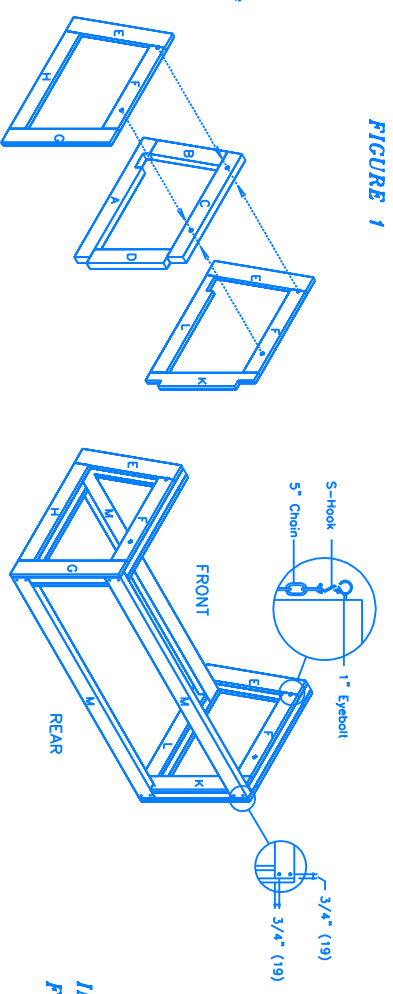


MIDDLE LAMINATION (ABCD)



INSIDE LAMINATION (EFLK)

CUTTING DIAGRAM: SWING SUPPORT



LAMINATION ASSEMBLY

ASSEMBLED SWING SUPPORT

- BASE MATERIALS LIST**
- Four 2"x4"x8' (1-1/2"x3-1/2"x8')
 - Four 2"x4"x8' (1-1/2"x3-1/2"x8')
 - Approx. sixteen 2" #8 threaded screws
 - Approx. forty eight 2-1/2" #8 threaded screws
 - Approx. twelve 3" #8 threaded screws
 - Approx. twelve 2-1/2" #8 threaded screws
 - Four 5" lengths of chain (minimum safe load of 400lbs)
 - Four 1/4" dia. S hooks
 - Four 5/16"x4" eye bolts, nuts, washers

- SWING MATERIALS LIST**
- Eight 1"x4"x8' (3/4"x3-1/2"x8')
 - Eight 1"x4"x8' (3/4"x3-1/2"x8')
 - Approx. twenty 1-1/2" #6 threaded screws
 - Approx. eight 3" #6 threaded screws
 - Approx. twelve 2-1/2" #8 threaded screws
 - Approx. forty 1-1/2" #6 threaded screws
 - Four 1/4" dia. S hooks
 - Four 5/16"x2-1/2" eye bolts, nuts, washers

GENERAL

- Wood filler
- Sandpaper
- Carpenter's glue

FINISHING & FINAL ASSEMBLY

Fill any imperfections with wood filler. Use sandpaper for removal of pencil marks and for finishing. We suggest an exterior grade latex or oil base stain be applied to this project to ensure longevity. Cut chain into four pieces of chain to swing one rope through eye bolts using the 1/4" S hooks. (Fig.1). Alternatively, attach swing to porch or tree.

On materials:

NOTE: When buying your lumber it is important to buy construction grade or better. We would suggest buying lumber as free and clear of knots and checks as possible. If you use cedar or spruce for the swing seat the 1x4 should be free of knots which would weaken the seat.