

Measurement

Medley

2nd
GRADE



°F

°C

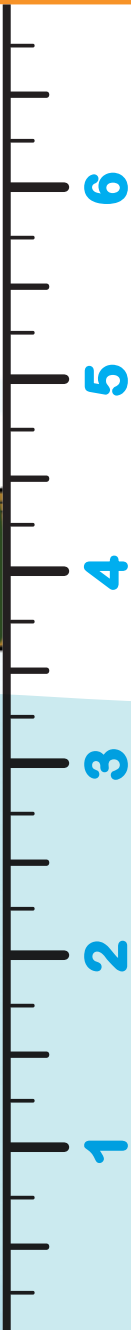
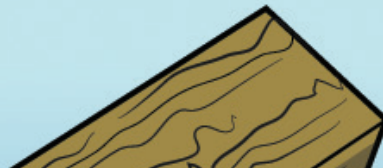
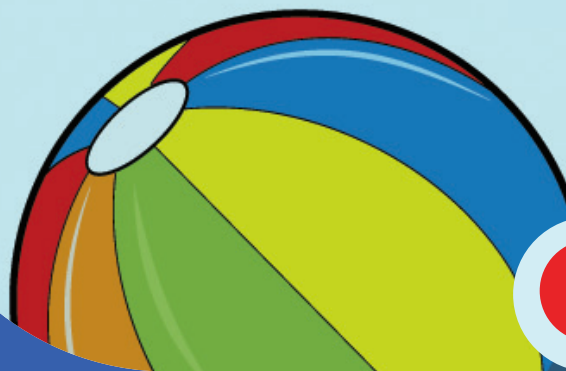
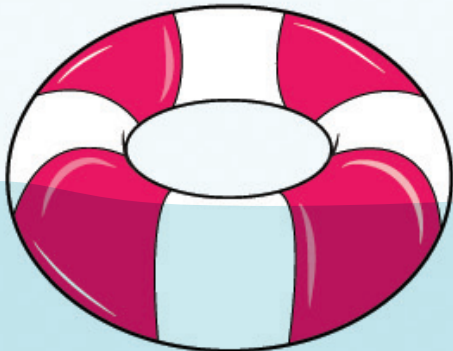


Table of Contents

Measurement Medley

Clock Work #1
Clock Work #2
Clock Work #3
What Time Is It?
Time In Between: Hard
Bobby's Blueprints #1
Bobby's Blueprints #2
Bobby's Blueprints #3
Hand Measurements
Foot Measurements
My Measurements
Measure Temperature
Measure Temperature: Fill the Thermometer
Measure Temperature: Fahrenheit and Celsius
Measuring Cups
Buoyancy
Density

Certificate of Completion

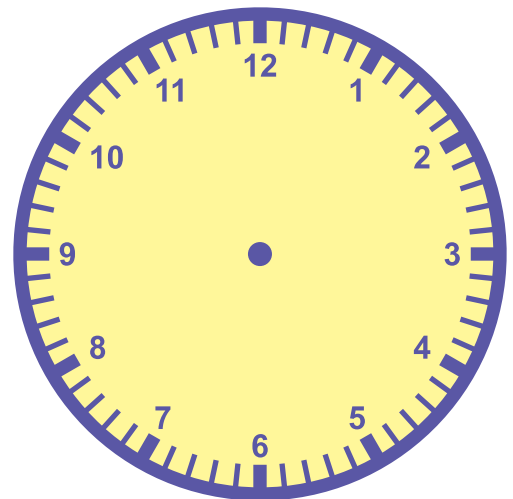
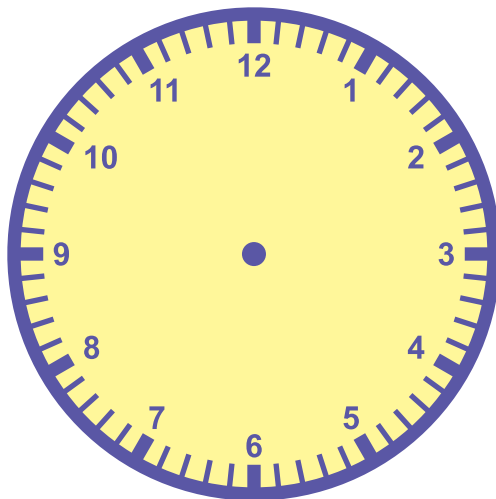
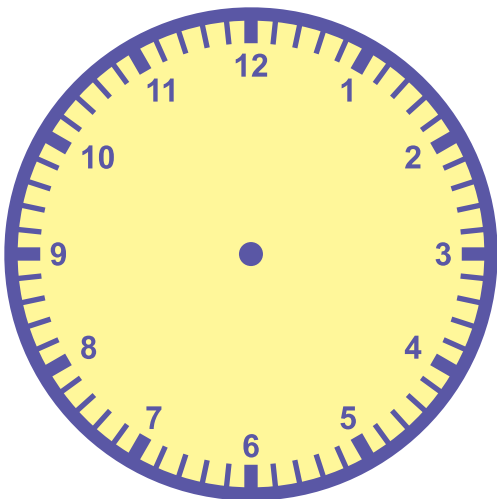
Want more workbooks? Join Education.com Plus to save time and money.
<http://www.education.com/education-plus/>

Clock Work #1

Write in the times shown on each clock below.



Draw the hands on each clock to show the times below.



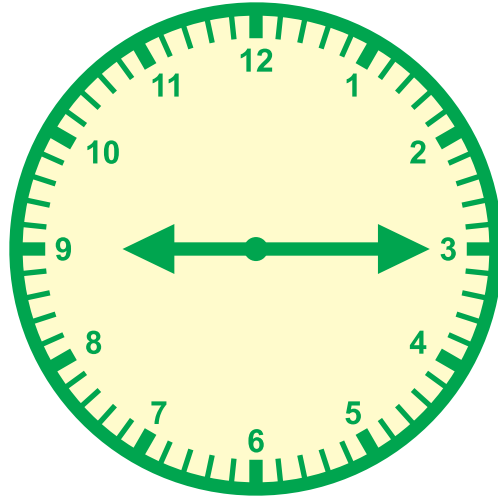
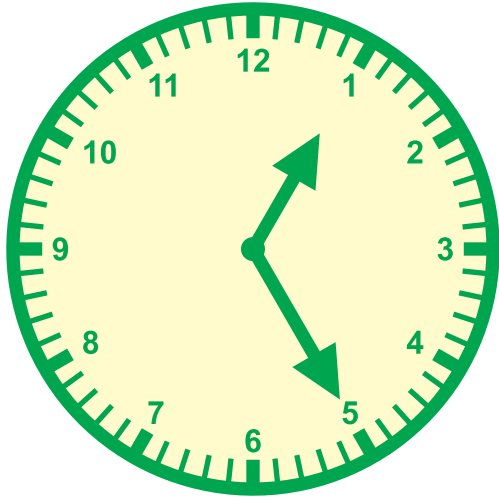
12:00

6:15

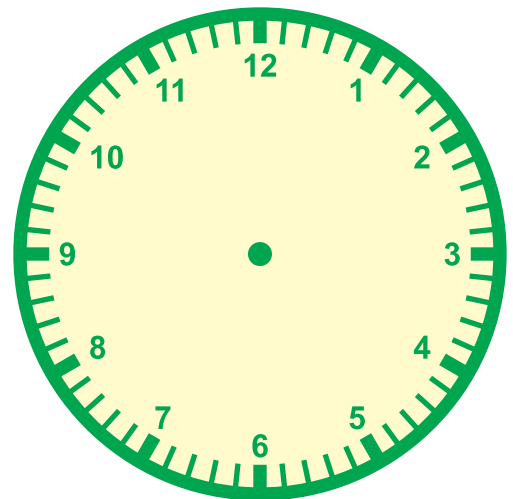
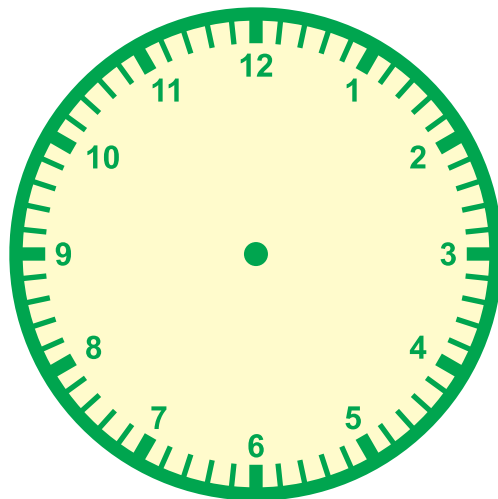
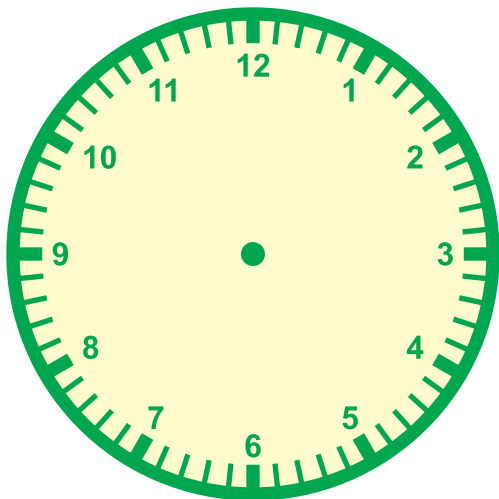
2:35

Clock Work #2

Write in the times shown on each clock below.



Draw the hands on each clock to show the times below.



4:45

6:20

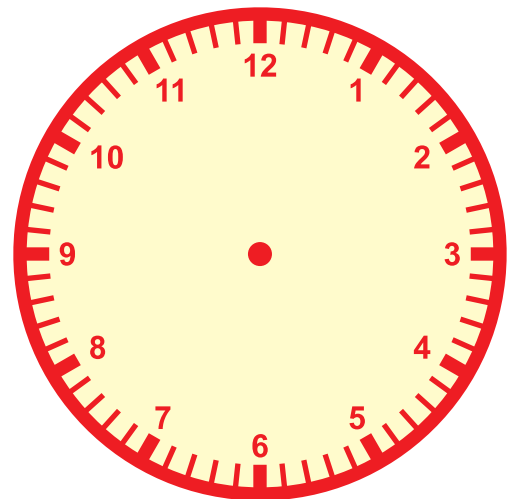
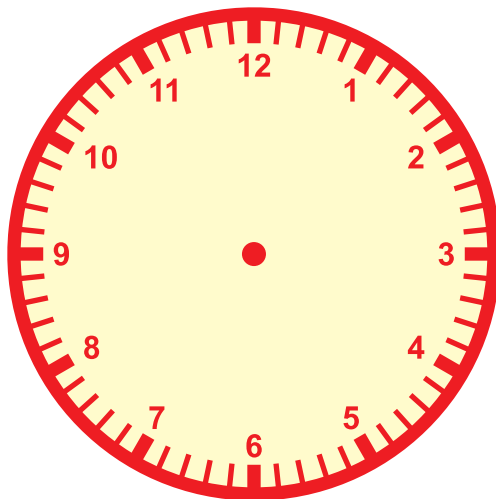
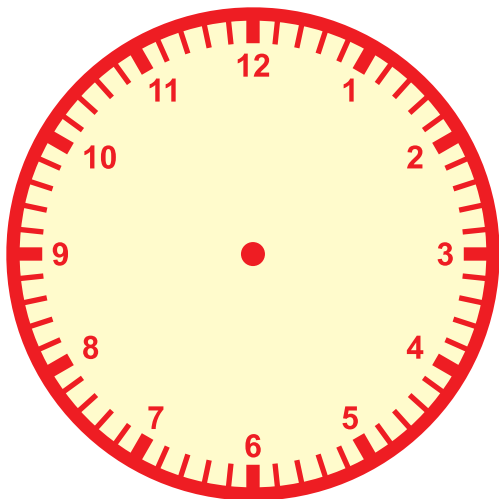
9:05

Clock Work #3

Write in the times shown on each clock below.



Draw the hands on each clock to show the times below.



3:25

9:10

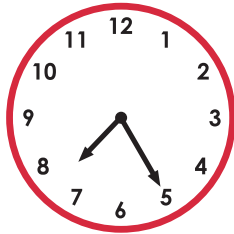
1:40

What Time Is It?

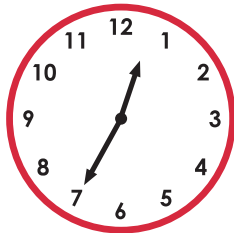
Match the clock to the time.



11:55



9:50



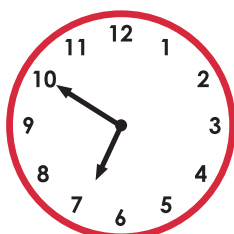
2:05



6:50



7:25

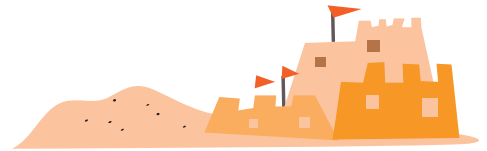


12:35

Time In Between: Hard

Read the sentences below and answer the questions.

Carrie started building a sand castle at 12:32pm. She finished building at 1:33 in the afternoon. How long did it take?



Rose started cutting her customer's hair at 11:30 in the morning. She finished at 1:14 in the afternoon. How long did the haircut take?



The painter started painting the wall at 2:35 in the afternoon and finished at 4:42 in the afternoon. How long did it take him to paint the wall?

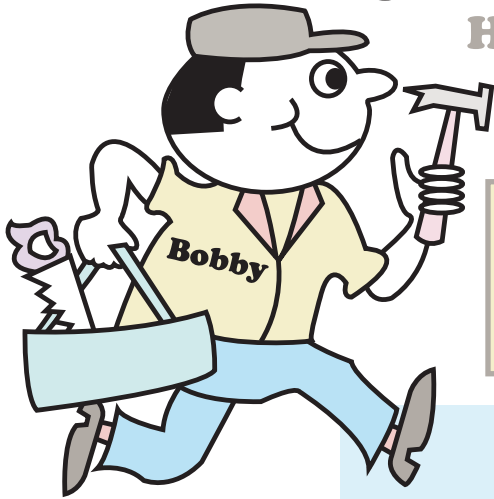


Challenge

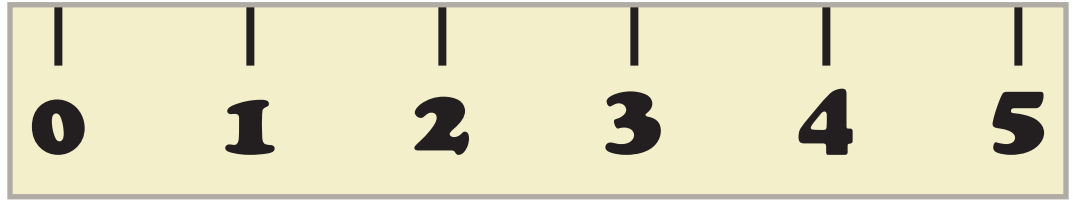
Joey spent the whole afternoon reading a book. If he started reading at 1:25 and finished in 4 hours and 15 minutes, at what time did he finish reading?



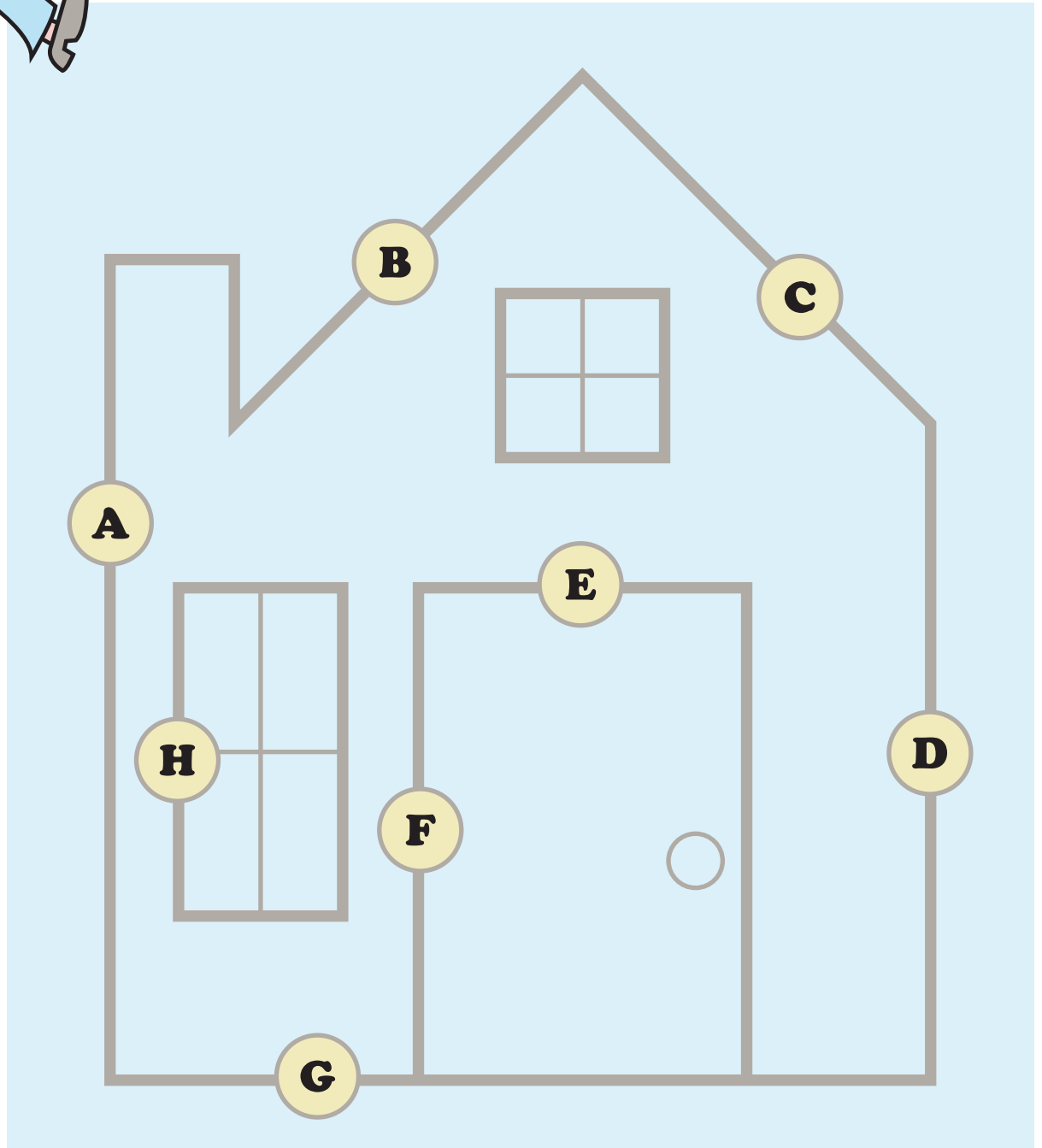
Bobby's Blueprints #1



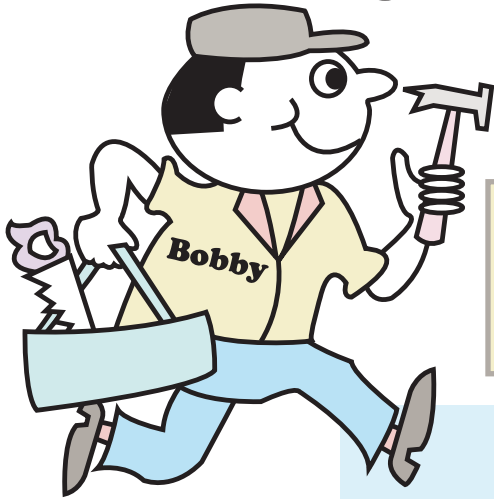
Help Bobby the Carpenter build a dollhouse.
Use the ruler below to measure each line segment and write your answers to the left.



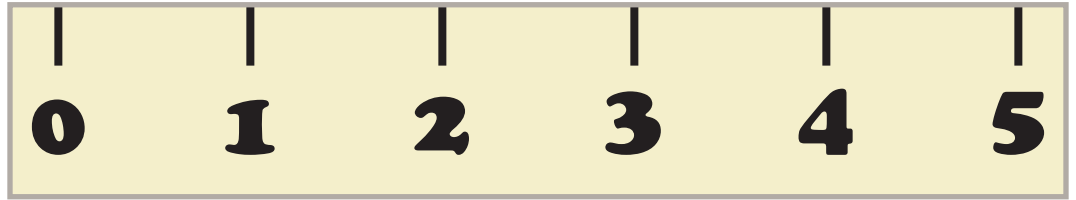
- A** _____
- B** _____
- C** _____
- D** _____
- E** _____
- F** _____
- G** _____
- H** _____



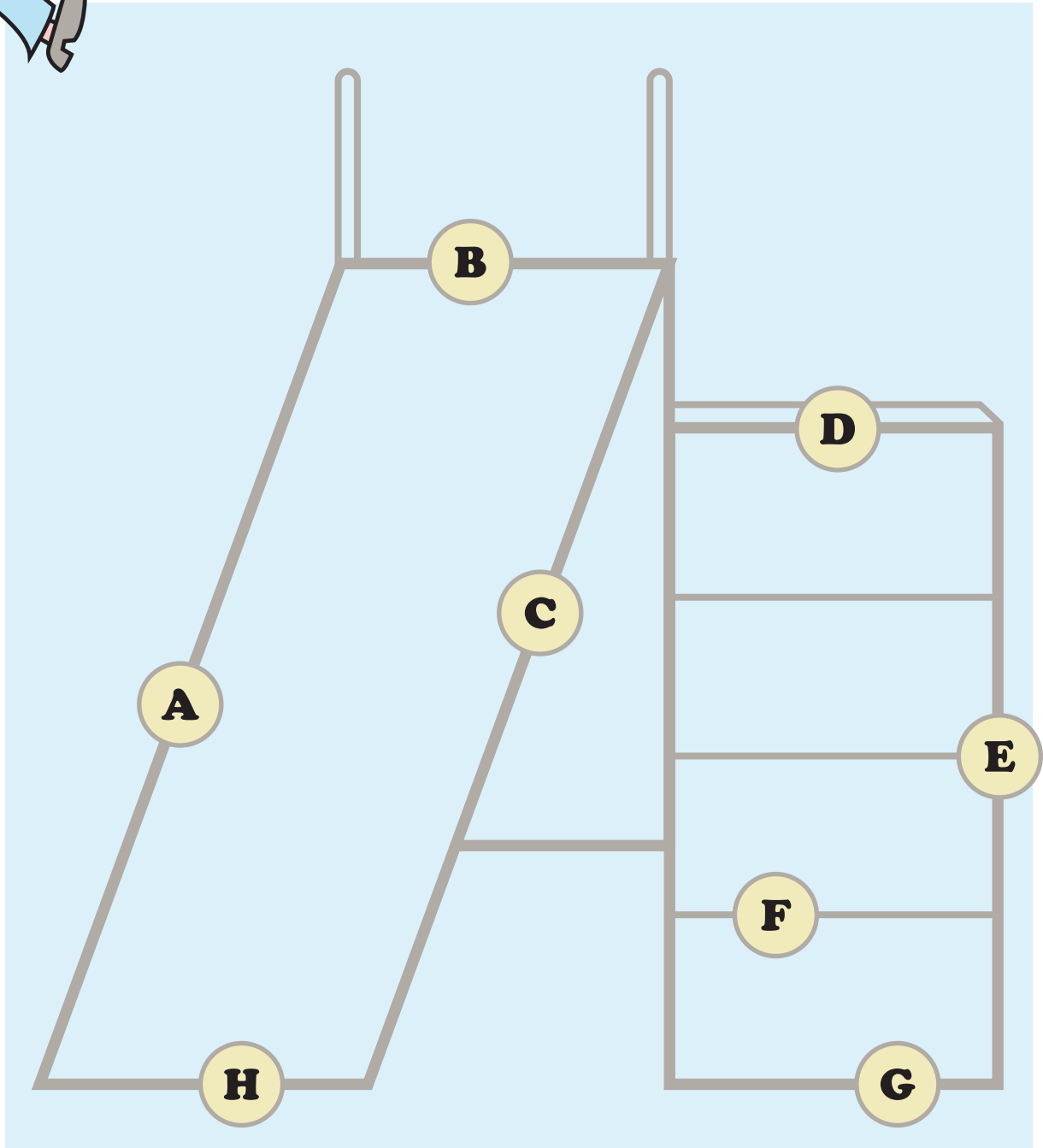
Bobby's Blueprints #2



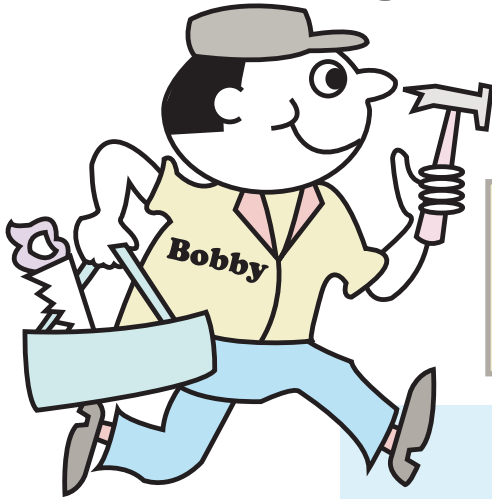
Help Bobby the Carpenter build a slide.
Use the ruler below to measure each line segment and write your answers to the left.



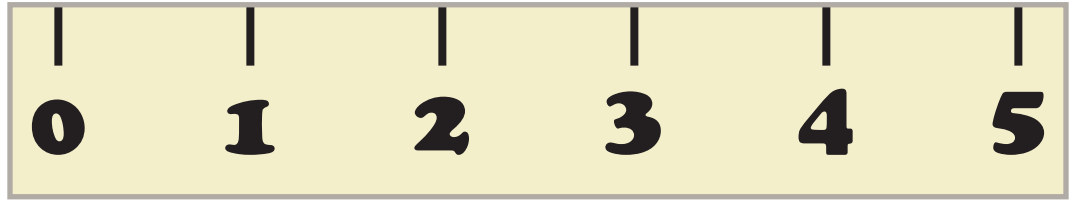
- A** _____
- B** _____
- C** _____
- D** _____
- E** _____
- F** _____
- G** _____
- H** _____



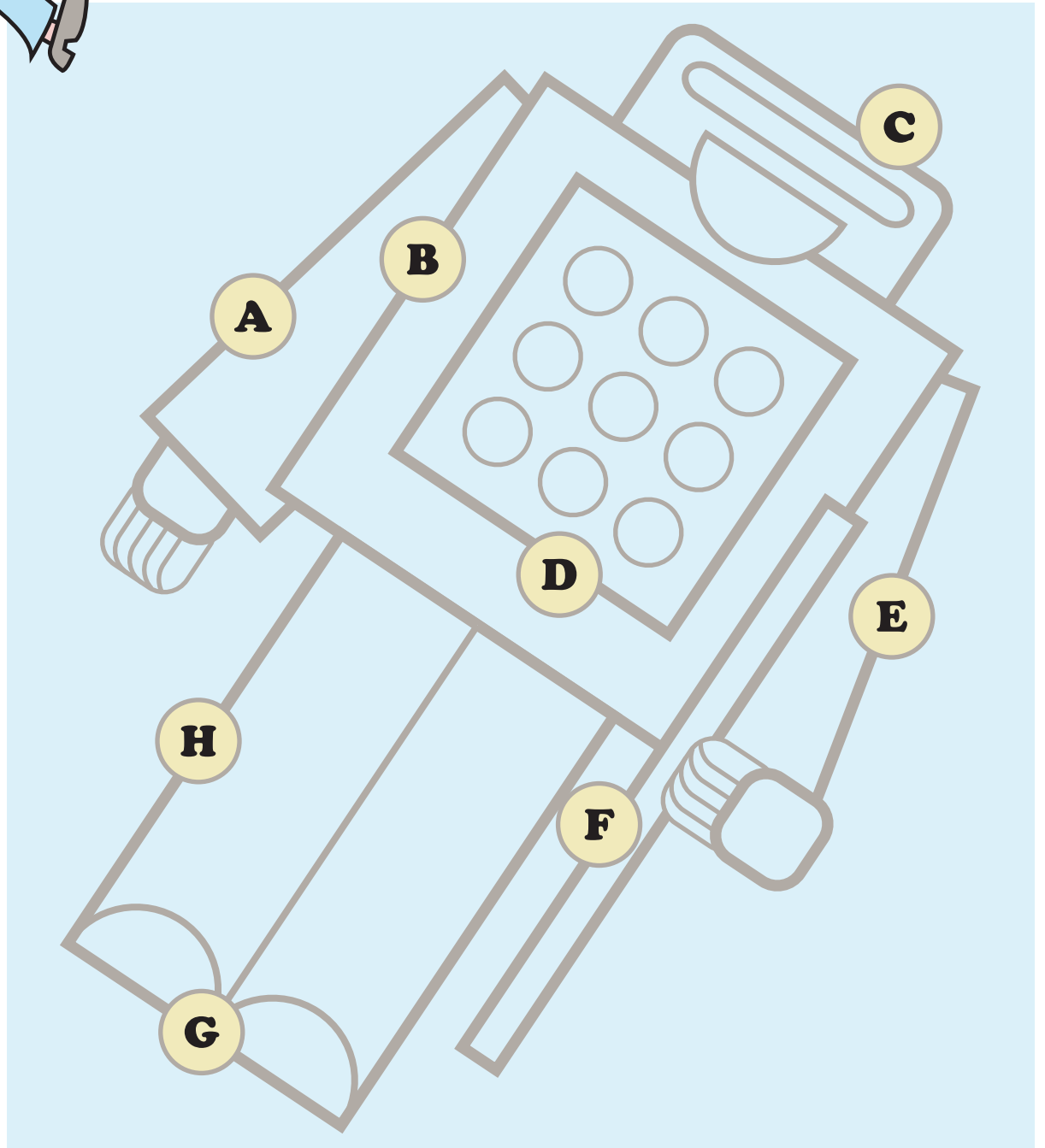
Bobby's Blueprints #3



Help Bobby the Carpenter build a robot.
Use the ruler below to measure each line segment and write your answers to the left.



- A** _____
- B** _____
- C** _____
- D** _____
- E** _____
- F** _____
- G** _____
- H** _____



Hand Measurements

Put one hand in the frame and spread your fingers apart. Use a pencil to trace around your fingers and hand.



Hand Measurements

Cut out the ruler. Measure your hand with the ruler.
Write the measurements to the nearest inch or half inch
on the lines.

My hand is about _____ inches long.

My hand is about _____ inches wide.

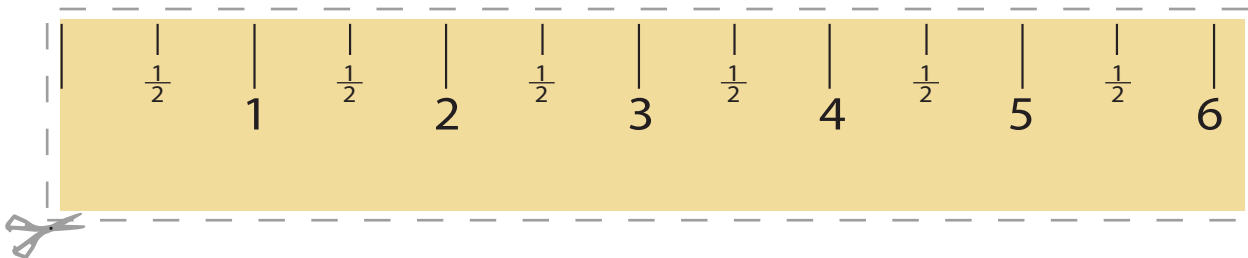
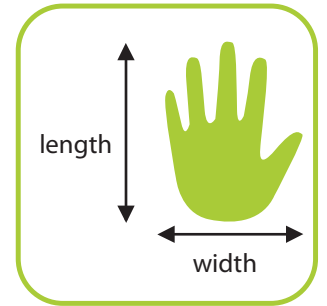
My thumb is about _____ inches long.

My pointer finger is about _____ inches long.

My middle finger is about _____ inches long.

My ring finger is about _____ inches long.

My pinkie is about _____ inches long.



Foot Measurements

Put one foot in the frame. Use a pencil to trace around your toes and foot. If your foot does not fit in the box, flip the piece of paper over and use the back!



Foot Measurements

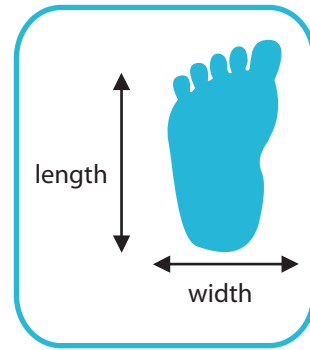
Use your own ruler or cut out the ruler.

Measure your foot with the ruler.

Write the measurements to the nearest inch or half inch on the lines.

My foot is about _____ inches long.

My foot is about _____ inches wide.



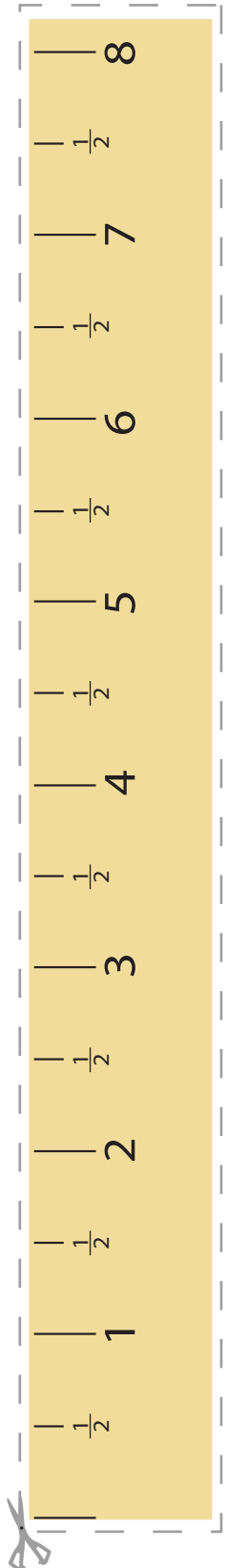
My big toe is about _____ inch(es) long.

My second toe is about _____ inch(es) long.

My middle toe is about _____ inch(es) long.

My fourth toe is about _____ inch(es) long.

My little toe is about _____ inch(es) long.



My Measurements

Have an adult use a measuring tape to help you measure these parts of your body.

My hand is about _____ inches long.

My foot is about _____ inches wide.

My arm from shoulder to wrist is _____ inches long.

My shoulders are _____ inches wide.

My leg from hip to knee is _____ inches long.

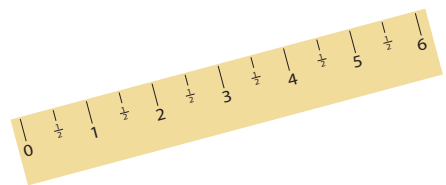
My leg from knee to ankle is _____ inches long.

My head is _____ inches around.

My face is _____ inches long.

My face is _____ inches wide.

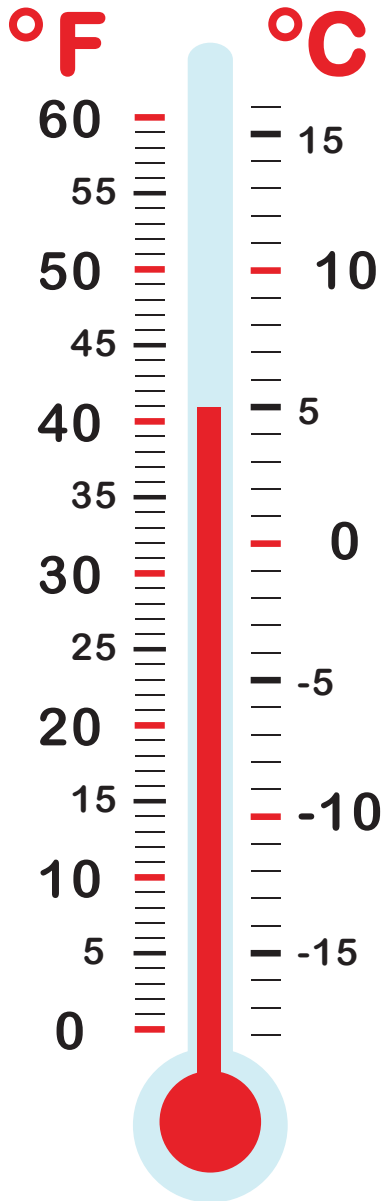
I am _____ inches tall.



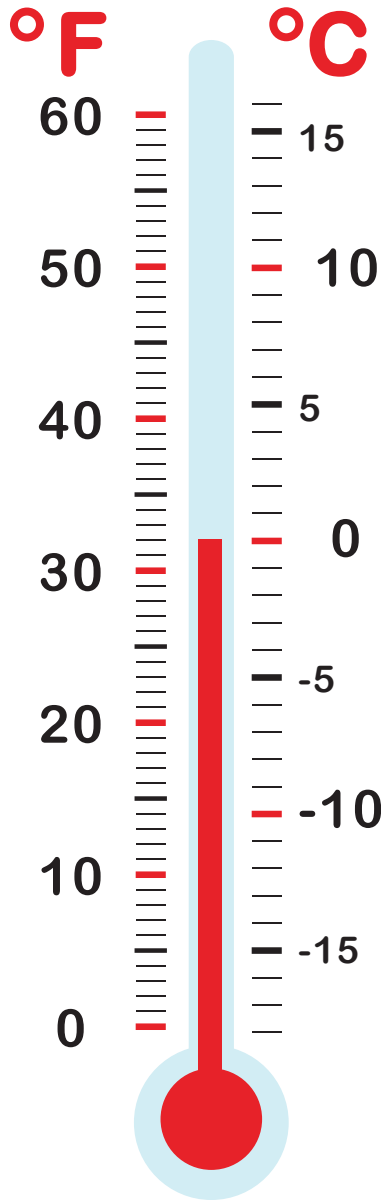
Reading thermometers!

MEASURE TEMPERATURE

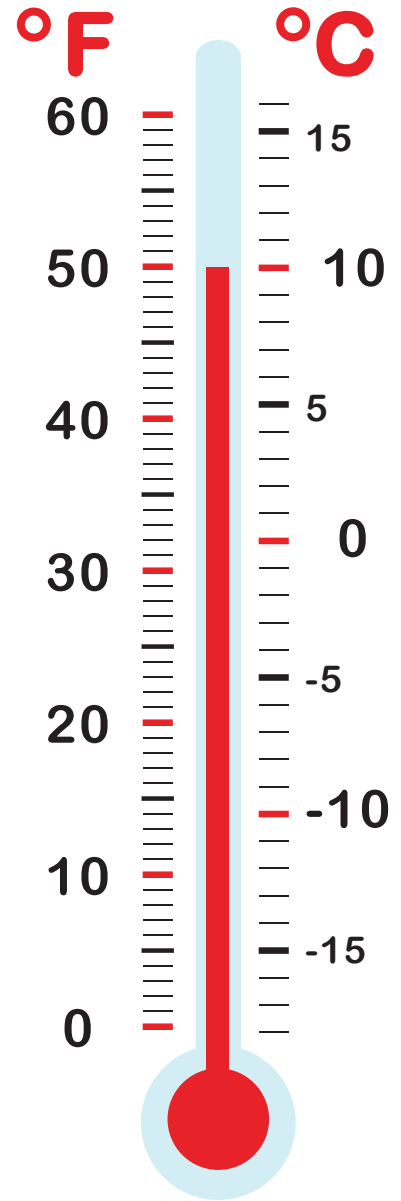
Write down what temperature it is in Fahrenheit and Celsius.



____ °F
____ °C



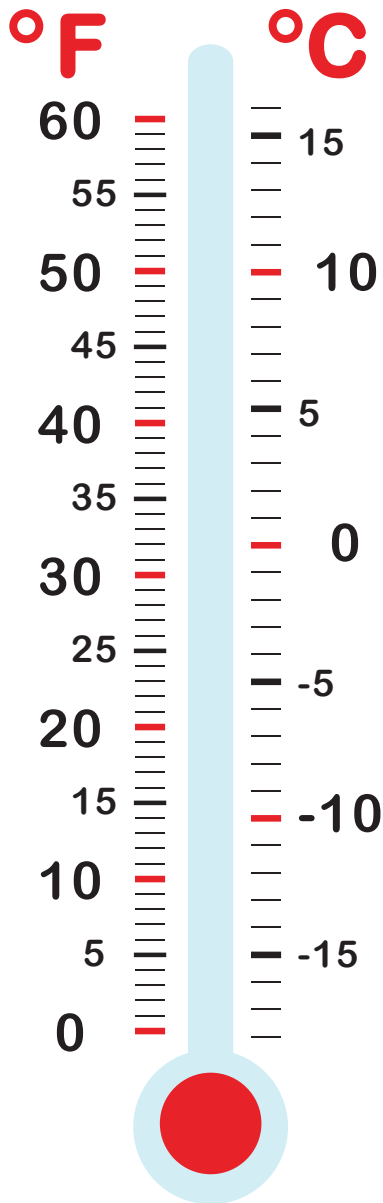
____ °F
____ °C



____ °F
____ °C

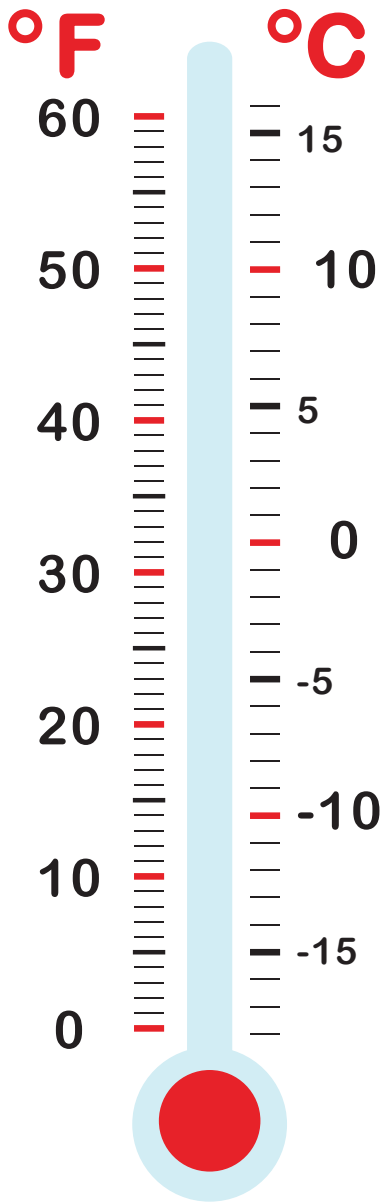
MEASURE TEMPERATURE

Fill in each thermometer with the given temperature in red.
Write the equivalent temperature in the blank.



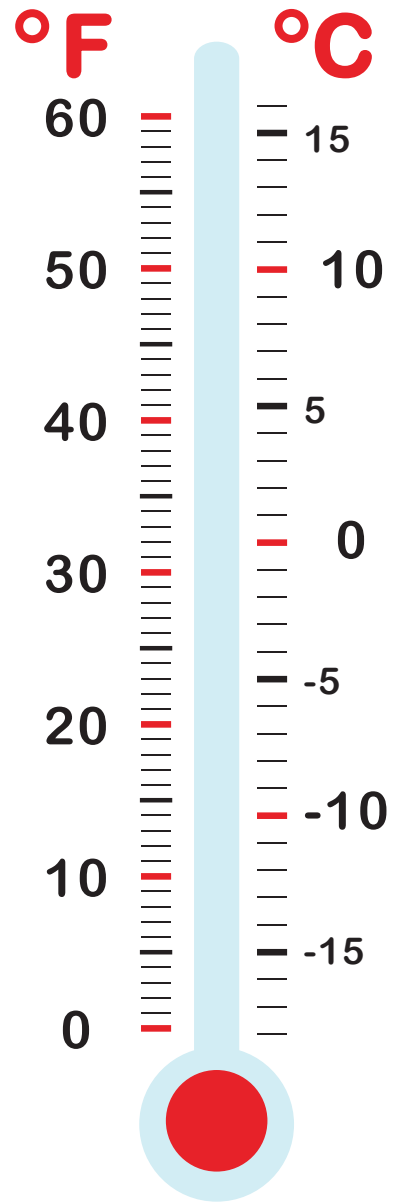
25 °F

___ °C



___ °F

-10 °C



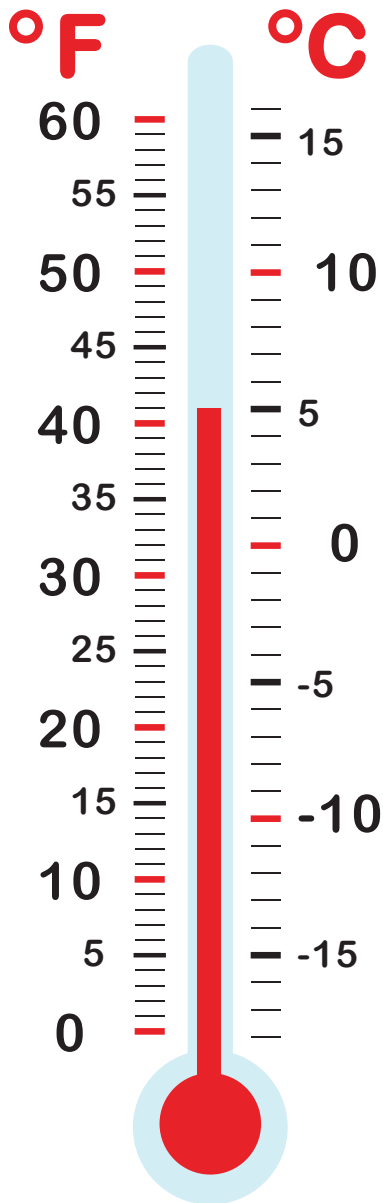
55 °F

___ °C

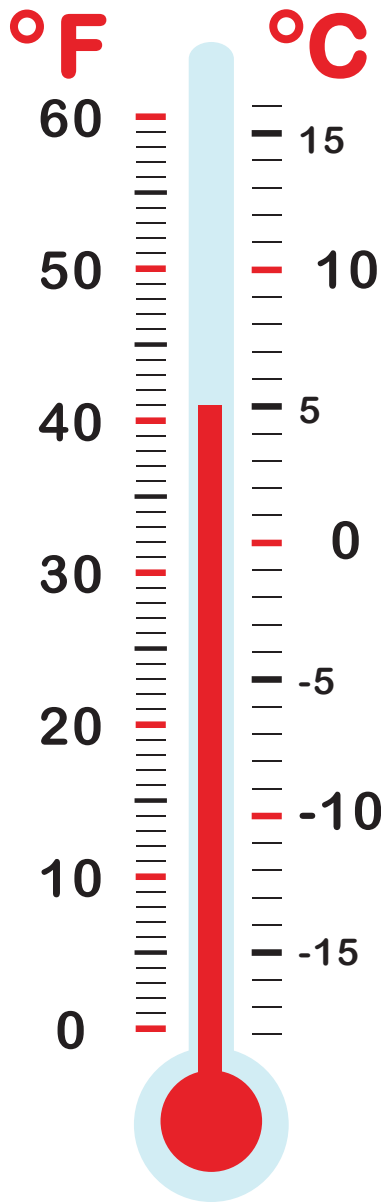
Reading thermometers!

MEASURE TEMPERATURE

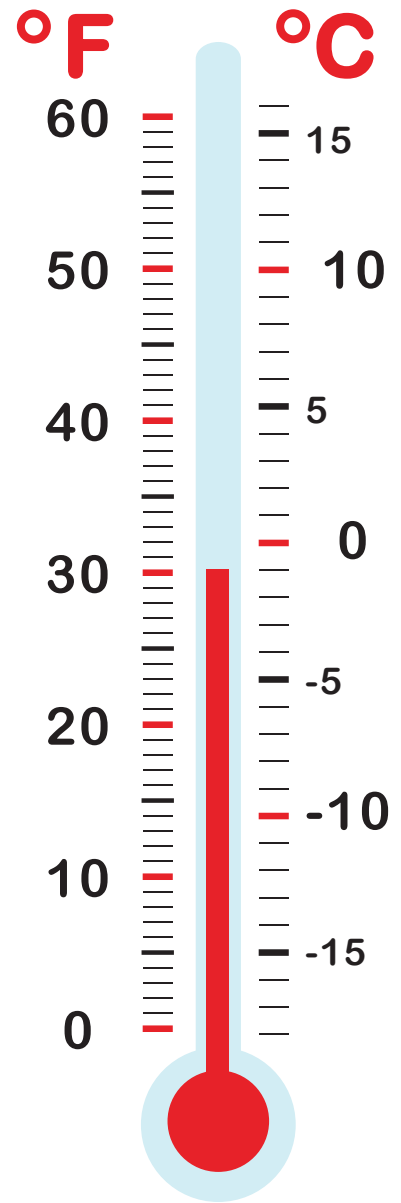
Write down what temperature it is in Fahrenheit and Celsius.



___ °F
___ °C



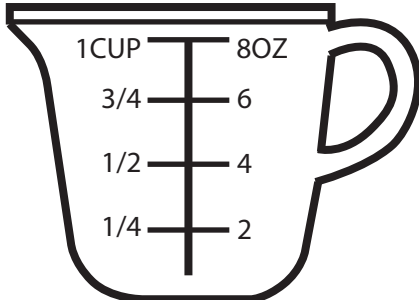
___ °F
___ °C



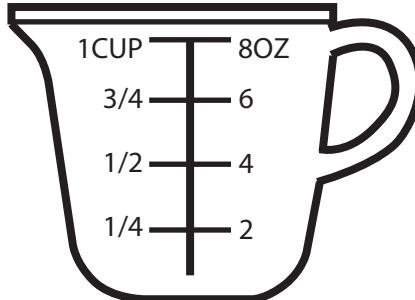
___ °F
___ °C

MEASURING CUPS

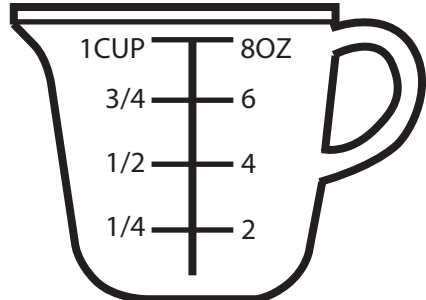
Color the measuring cup up to the indicated amount.



1/2 CUP

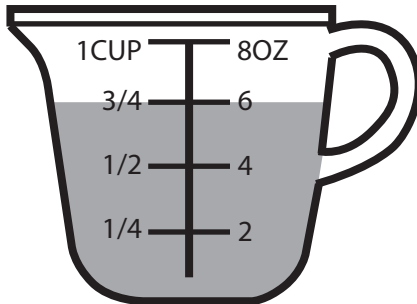


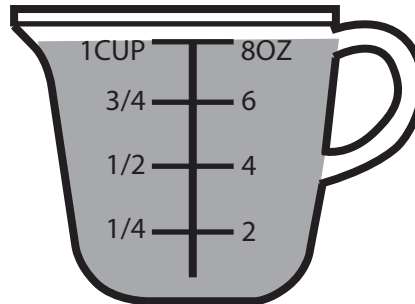
2 OZ.

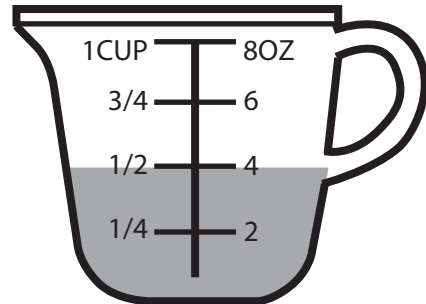


3/4 CUP

Write down the measurement of each measuring cup in cups and liquid ounces.







Using the measuring cups above convert the following:

3/4 CUP = _____ OZ.

8 OZ. = _____ CUPS

1 CUP = _____ OZ.

2 OZ. = _____ CUPS

1/4 CUP = _____ OZ.

4 OZ. = _____ CUPS

DENSITY

Density describes how much an object weighs relating to its size.

FOR EXAMPLE:

A cubic cm. of cork weighs less than a cubic cm. of lead.



REMEMBER

If an object is less dense than water it will float, but if it is more dense it will sink.

What do you think?

The following items are all about the same size, but have different densities. Which items would sink to the bottom of this cup of water? Circle the items that would sink because of their density.



PING-PONG
BALL



COINS



SCREW

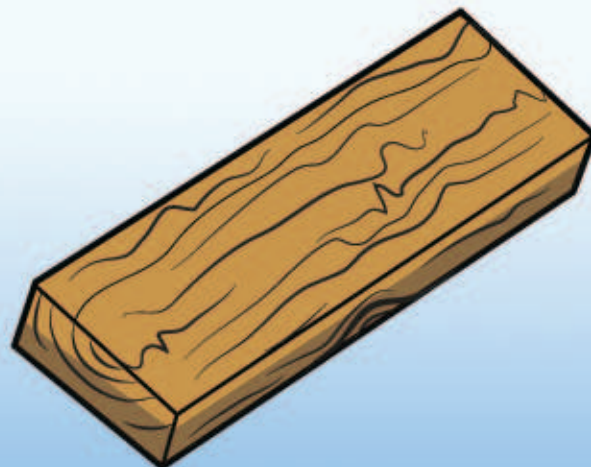
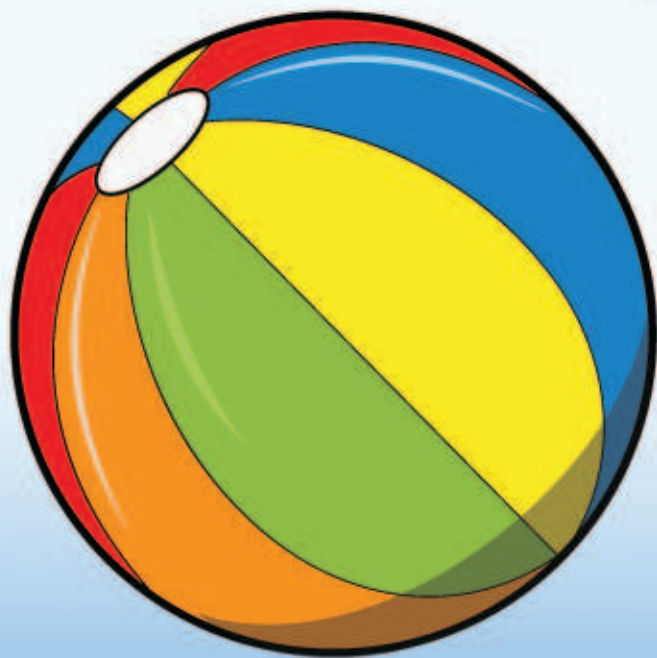


KEY



Buoyancy

Some objects can float, but if pushed down by a more dense object, the object will submerge itself underwater. Draw a line to the objects that would hold the fat toad above the water!



Great job!

is an Education.com math superstar

