



SIMON CHEUNG

PAPER TOWEL RACK

BY GARY WALCHUK

MATERIALS

ROUGH CUT SIZE

1" x 8" x 3'

FINISHED CUT SIZE

(Number in brackets is number of pieces needed)

(1) 4 1/4" x 12 3/4" x 3/4" - A

(1) 5 1/2" x 7" x 3/4" - B

(1) 15" x 1 1/4" round - C

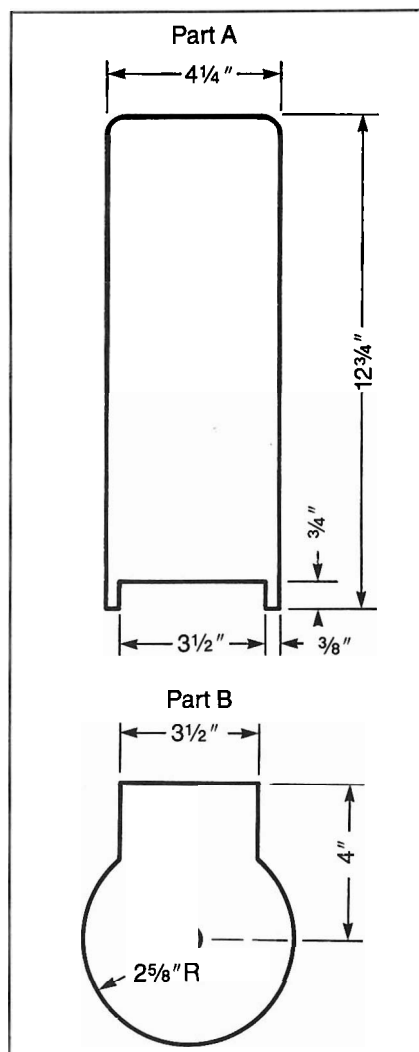
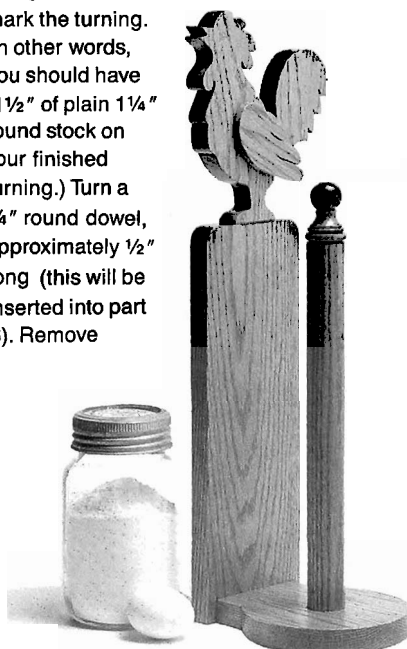
(1) 6" x 7" x 3/4" - D

(1) 2" x 4" x 1/2" - E

INSTRUCTIONS

Cutting

1. Laminate two pieces, 3/4" x 1 1/2" x approximately 16" long to make the turning C (laminating will make a 1 1/2" x 1 1/2" turning square, 16" long). Round the stock to a 1 1/4" diameter, then turn one end to the desired shape. Measure 11 1/2" back from where the design starts and mark the turning. (In other words, you should have 11 1/2" of plain 1 1/4" round stock on your finished turning.) Turn a 3/4" round dowel, approximately 1/2" long (this will be inserted into part B). Remove



finished turning from the lathe and cut the dowelled end so that 3/8" of dowel remains.

2. Cut A, B and D to shape from 3/4" stock. Cut or plane a 2" x 4" piece of stock to 1/2" thick for the rooster's wing E, then cut to shape.

3. Drill a 3/4" hole, 3/8" deep into part B. Finish sand all pieces.

Assembly

1. Fit back edge of B into the notch of part A (see photo). Glue and countersink (two) #8 x 1 1/2" screws from the underside of B into A.

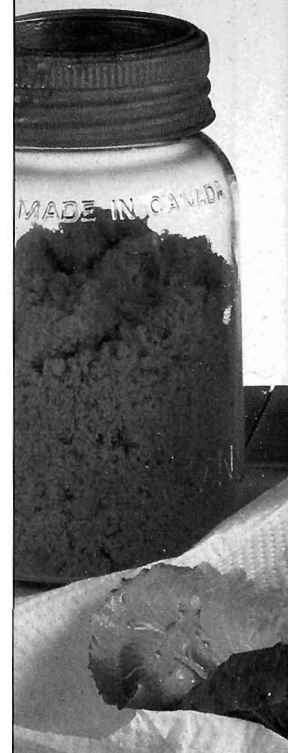
2. Dowel and glue cut-out D to the top edge of A.

3. Glue and clamp the wing E to part D.

4. Apply glue to the hole in part B, insert dowel end of turning C and once again, countersink a screw from underside of B into C.

5. Finish as you choose and it's ready to use! □

Continued



PAPER TOWEL RACK

