



Outdoor Table/Seat

After completing our new patio table (see Basic Patio Table), I planned to build four seats to go with it. However, now that we have them, we use them not only as seats but as outdoor cocktail tables and ottomans. We also place them side-by-side and use them as a bench. They are very easy to build, and the cost is next to nothing. These are made from treated pine, but you can also use redwood. Just be sure to use waterproof wood glue during the construction.



Materials List

Lumber:

- 11 linear feet 2 x 4 treated lumber
- 8 linear ft. 1 x 4 treated lumber

Hardware:

- Approx. 20 #6 1-1/2" galvanized flathead wood screws
- Approx. 25 #10 x 3-1/2" galvanized flathead wood screws

Cutting List

Code	Description	Qty.	Material	Dimensions
A	Leg	4	2 x 4 treated lumber	18" long
B	Leg support	4	2 x 4 treated lumber	10" long
C	Center support		2 x 4 treated lumber	13" long
D	Slat	5	1 x 4 treated lumber	17" long

Constructing the Sides

1. Cut four legs (A) from 2 x 4 treated lumber, each 18 inches long.
2. Cut four leg supports (B) from 2 x 4 treated lumber, each 10 inches long.

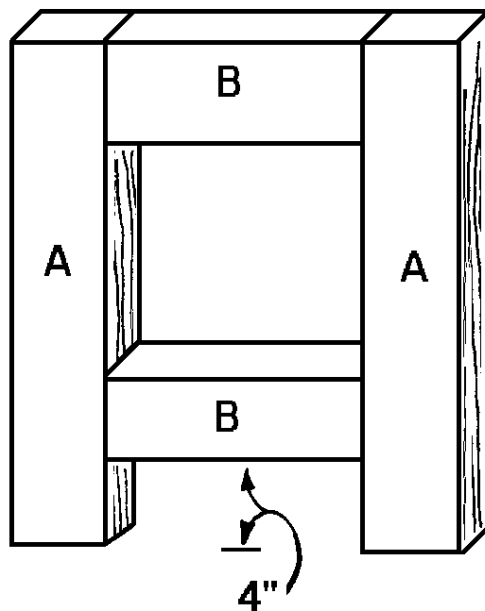


Figure 1

3. Assemble one side as shown in *Figure 1*, placing two leg supports (B) between two legs (A). One leg support (B) should be flush with the ends of the two legs (A), and the second leg support (B) should be placed 4 inches from the opposite ends of the legs (A). Glue and screw the assembly together, using 3-1/2"-long screws. Use two screws for each joint. Drive the screws at an angle (toenail) through the top and bottom edges of each leg support (B) into each leg (A). Repeat this process to assemble the second side.

4. Cut one 13"-long center support (C) from 2 x 4 treated lumber.
5. Perform this next assembly on a level work surface to make certain that the finished base is level. Place the center support (C) between the two sides, as shown in *Figure 2*, and screw it in place using 3-1/2" screws. Drive the screws through the face of each leg support (B) into the ends of the center support (C) into the ends of the center support.

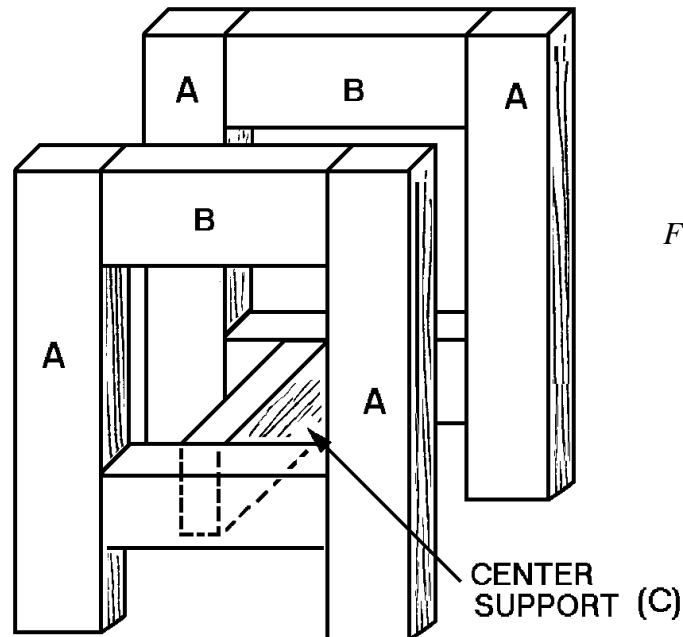


Figure 2

Adding the Slats

1. Cut five slats (D) from 1 x 4 treated lumber, each 17 inches long.
2. Place the five slats (D) side-by-side on top of the base assembly (*Figure 3*) with their cut ends facing the sides. They should overhang the base on all four sides by about 1/2 inch. Secure the four slats by screwing them to the base assembly using 1-1/2"-long screws. (TIP: it looks much nicer if you draw a line on the slats from the front of the base to the back, about 1 inch from the slat ends, and place all of your screws on that line.) Put two screws on each end of each slat, and space them uniformly on all slats.

Finishing

1. Sand the completed project carefully (people will be sitting on this!).
2. Using exterior-grade materials, stain or paint the finished table/seat the color of your choice.

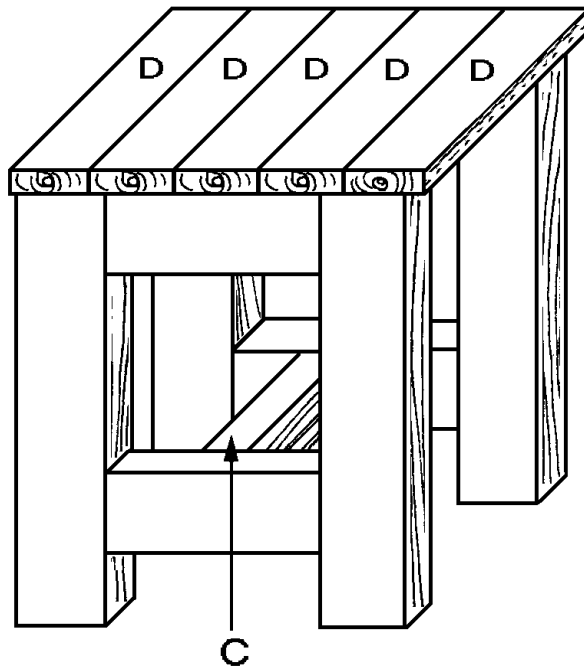


Figure 3

Try other exciting indoor and outdoor projects from
!

