

Reading Like a Writer, Writing Like a Reader

4th
Grade

Either the well was very deep, or she fell very slowly, for she had plenty of time as she went down to look about her and to wonder what was going to happen next. First, she tried to look down and make out what she was coming to, but it was too dark to see anything; then she looked at the sides of the well, and noticed that they were filled with cupboards and book-shelves; here and there she saw maps and pictures hung upon pegs. She took down a jar from one of the shelves as she passed; it was labeled 'ORANGE MARMALADE', but to her great disappointment it was empty: she did not like to drop the jar for fear of killing somebody, so managed to put it into one of the cupboards as she fell past it.

'Well!' thought _____ to herself, 'after such a fall as this, I shall think nothing of tumbling down stairs! How brave they'll all think me at home! Why, I wouldn't say anything about it, even if I fell off the top of the house!' (Which was very likely true.)

Down, down, down. Would the fall NEVER come to an end! 'I wonder how many miles I've fallen by this time?' she said aloud.

READ
this passage

WRITE
your own
dialogue

Examples:

A. "Where are you going?" Asked Jamie's mother.

"Oh, nowhere special" said Jamie.



B. "Did you clean your room like I asked?"

"Uh, well, sort of."

Table of Contents

Reading Like a Writer, Writing Like a Reader

Talking About Literature
Crossword Puzzle *
It's All About Conflict
Find the Clues: What Genre is This?
Find the Clues: Character Profile #1
Find the Clues: Character Profile #2
Comparing Characters: Alice & Mary
Find the Clues
Write Your Own Setting
How to Write Dialogue

Certificate of Completion
Answer Sheets

* *Has an Answer Sheet*

Want more workbooks? Join Education.com Plus to save time and money.
<http://www.education.com/education-plus/>

Talking About Literature

Learning these literary terms will come in handy as you complete the worksheets in this book.

ACTION

The events that take place in a literary work.

AUTOBIOGRAPHY

The story of a person's life told by him or herself. It is always written in the first person.

BIOGRAPHY

The true story of a person's life that is told by a different person. It is always written in the third person.

CHARACTER

A person or non-human, in the story.

CONFLICT

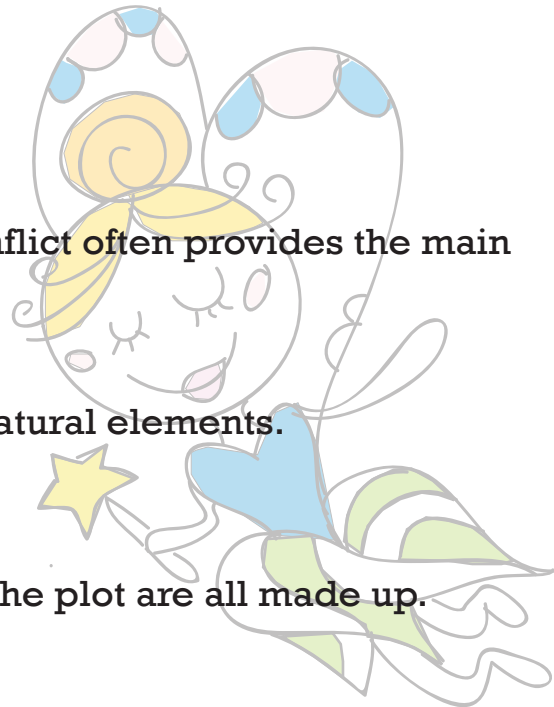
The struggle between two forces. The conflict often provides the main **ACTION** and spotlights the literary **PLOT**.

FANTASY

FICTION that uses magic or other supernatural elements.

FICTION

Literary works where the characters and the plot are all made up.



Talking About Literature

Learning these literary terms will come in handy as you complete the worksheets in this book.

GENRE

The type of writing a book uses, such as FICTION, NONFICTION, SCIENCE FICTION, FANTASY, BIOGRAPHY, etc.

IMAGERY

The use of images, descriptions or figures of speech like METAPHORS and SIMILES to help the reader visualize a mood, concept, or CHARACTER.

INTERPRETATION

The ideas or explanations a reader has about the literary work's meaning.

IRONY

A technique in which a character or plot device is not as it would seem.

METAPHOR

A figure of speech that says one thing is another, revealing similar qualities in the two things. Example: *His voice was a soft wind that lulled me to sleep.*

MOOD

The atmosphere in a literary work, meant to evoke certain feelings from a reader.

NARRATOR

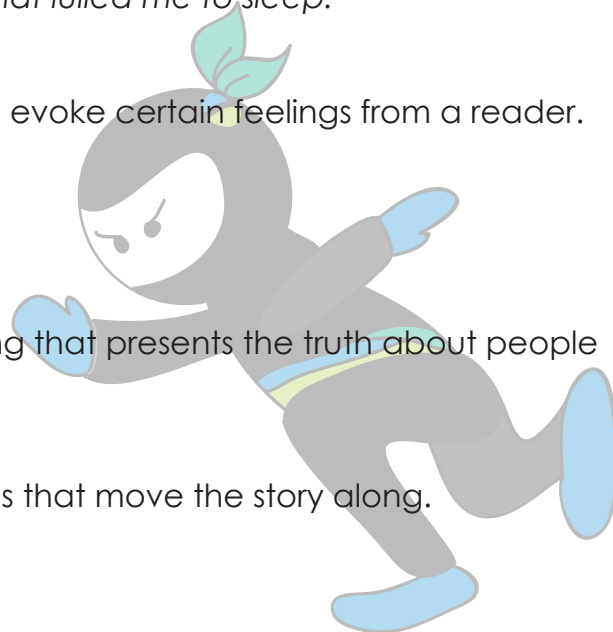
The speaker in a literary work.

NONFICTION

The opposite of FICTION. Any piece of writing that presents the truth about people and events.

PLOT

The literary work's ACTION, or circumstances that move the story along.



Talking About Literature

Learning these literary terms will come in handy as you complete the worksheets in this book.

POINT OF VIEW

The perspective of the story's **NARRATOR**. There are three different classifications:

1) First Person

Speaker uses the pronoun "I".

2) Second Person

Speaker uses the pronoun "You."

3) Third Person

Speaker uses the pronoun(s) "He", "She", "It", or "They."

PROTAGONIST & ANTAGONIST

The protagonist is the central character in a literary work. The antagonist is an important character who often is in conflict with the protagonist.

SCIENCE FICTION

FICTION that includes scientific discoveries or technologies that we don't have in the present.

SETTING

The time and place in which the literary work's **ACTION** takes place.

SIMILE

A kind of **METAPHOR** that is introduced using the words like "as", "as if", or "like".

Example: His voice sounded like a soft wind.

SYMBOL (SYMBOLISM)

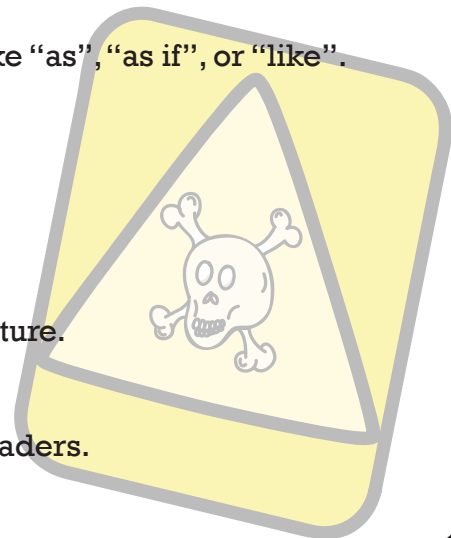
Something that represents or stands for another thing.

THEME

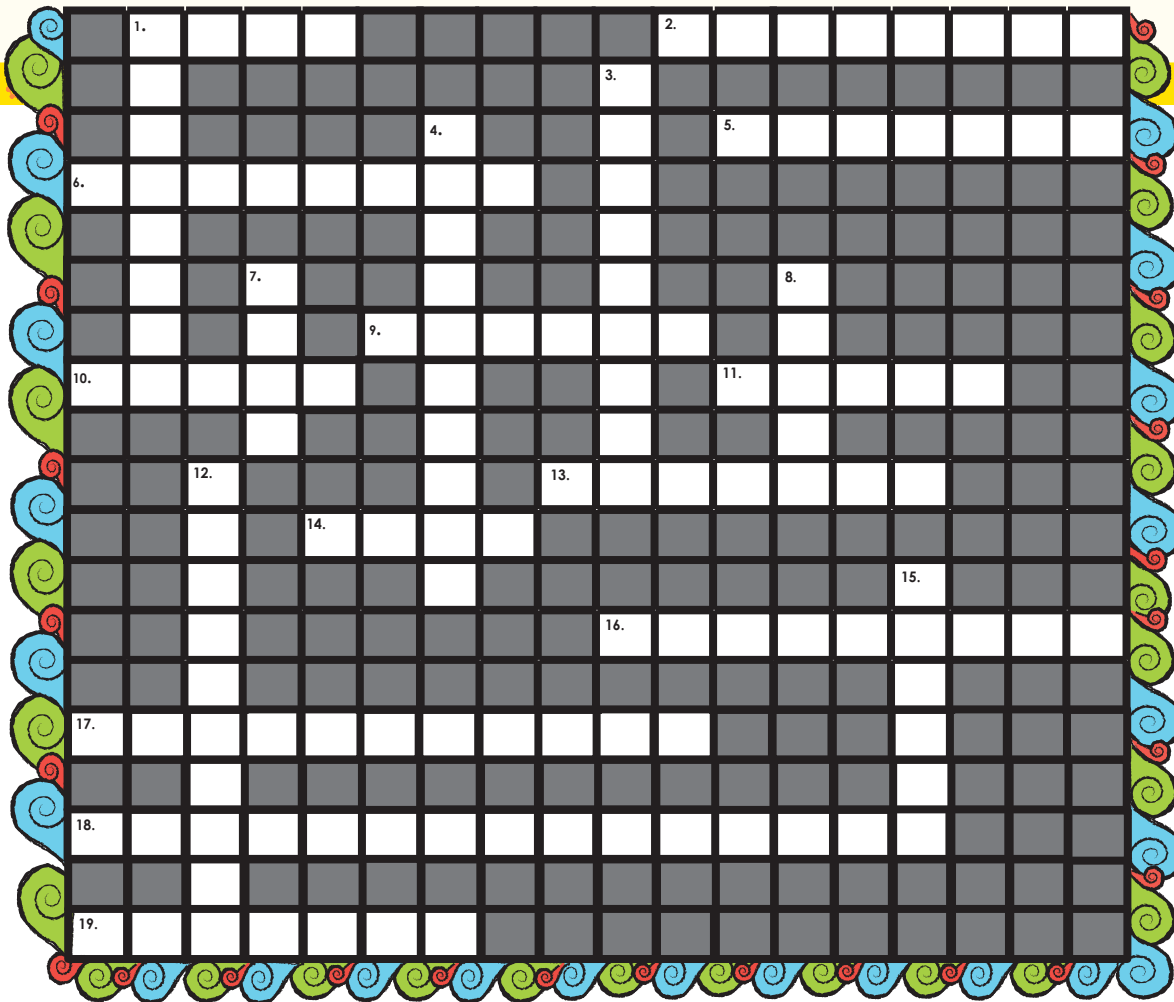
The meaning or general ideas expressed in a work of literature.

tone

The author's attitude towards the story and/or the story's readers.



Crossword Puzzle

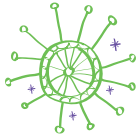


Across

Down

1. The atmosphere in a literary work, meant to evoke certain feelings from a reader.
2. When a protagonist struggles to get what he wants this is called _____.
5. Harry Potter is an example of a _____ book.
6. The speaker in a literary work.
9. "My love is like a red, red, rose" is an example of a _____.
10. A technique in which a character or plot device is not as it would actually seem.
11. The type of writing, such as fiction or nonfiction.
13. "The sweet smell of orange blossoms reminded her of home." is called _____.
14. The literary work's action, as well as all other circumstances that move the story along
16. A person, human or non-human in the story.
17. Greg Heffley is the _____ of The Diary of a Wimpy Kid.
18. Star Wars is an example of a _____.
19. "A long time ago in a galaxy far, far away" is a sentence that gives the _____ of the story.

1. "Your love is my sunshine" is an example of a _____.
3. Something that represents or stands for another thing.
4. The Diary of Anne Frank is an example of a _____ book.
7. The author's attitude towards the story and/or the story's readers.
8. The meaning or general ideas expressed in a work of literature.
12. The Big Bad Wolf is the _____ of Little Red Riding Hood.
15. The events that take place in a literary work.



It's All About **CONFLICT**

Most plots depend on conflict. How a character handles a particular problem will drive the action. Here are some different kinds of conflict:

Individual vs. Individual

This conflict is typically between an individual person and another person. It can also be between groups of people.

Individual vs. Society

This conflict occurs when characters go against a set of rules. It can also occur when characters break "normal" behavior by doing something that might shock or offend polite society.

Individual vs. Technology

This happens when a character is in conflict with a kind of technology that threatens them. Lots of science fiction stories have this kind of conflict.

Individual vs. Nature

This happens when characters are thrown into the wild and must fend for themselves. Will they find food? Shelter? Can they protect themselves against wild animals and other dangers?

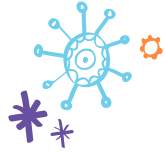
Individual vs. Self

This happens when a character is in conflict with something about their self. They may be facing a problem like self-esteem or trying to control their temper.

Identify the **CONFLICT**

Match the story summaries below with the conflict that you think fits best. (Some may have more than one answer)

1. A young Jewish girl hides from the Nazis in an attic in Denmark. _____
2. In the future, a family lives in a smart house that does everything for them. It even has a room where anything they imagine will appear. One day the children imagine an African veldt with wild animals that threatens their parents. _____
3. A man walking on a trail in the Yukon on a very cold day gets very wet. He can't stay warm and tries to build a fire. When the fire goes out he tries to run to keep warm, even running doesn't warm him. _____
4. A boy who is jealous of the new boy in town also desperately wants his approval. He does something risky in order to impress him. _____



Find the Clues

What Genre is This?

Authors don't always tell you what genre their books are in, but they do give you clues. Read the passage below and see if you can use clues to tell what the genre is.

Either the well was very deep, or she fell very slowly, for she had plenty of time as she went down to look about her and to wonder what was going to happen next. First, she tried to look down and make out what she was coming to, but it was too dark to see anything; then she looked at the sides of the well, and noticed that they were filled with cupboards and book-shelves; here and there she saw maps and pictures hung upon pegs. She took down a jar from one of the shelves as she passed; it was labeled 'ORANGE MARMALADE', but to her great disappointment it was empty: she did not like to drop the jar for fear of killing somebody, so managed to put it into one of the cupboards as she fell past it.

'Well!' thought _____ to herself, 'after such a fall as this, I shall think nothing of tumbling down stairs! How brave they'll all think me at home! Why, I wouldn't say anything about it, even if I fell off the top of the house!' (Which was very likely true.)

Down, down, down. Would the fall NEVER come to an end! 'I wonder how many miles I've fallen by this time?' she said aloud.

1. Do you think this passage is from a work of fiction or nonfiction? **A.** Fiction **B.** Nonfiction

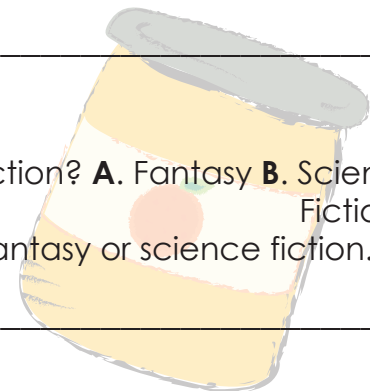
1a. Write a complete sentence that explains why the passage is fiction or nonfiction.

1b. Underline the clues in the text that helped you decide.

2. Do you think this passage is from a work of fantasy or science fiction? **A.** Fantasy **B.** Science Fiction

2a. Write a complete sentence that explains why the passage is fantasy or science fiction.

2b. Underline the clues in the text that helped you decide.



Find The Clues

Character Profile

Use the same instructions and character profile for this worksheet.

Alice was beginning to get very tired of sitting by her sister on the bank, and of having nothing to do: once or twice she had peeped into the book her sister was reading, but it had no pictures or conversations in it, 'and what is the use of a book,' thought Alice 'without pictures or conversation?' So she was considering in her own mind (as well as she could, for the hot day made her feel very sleepy and stupid), whether the pleasure of making a daisy-chain would be worth the trouble of getting up and picking the daisies, when suddenly a White Rabbit with pink eyes ran close by her. There was nothing so VERY remarkable in that; nor did Alice think it so VERY much out of the way to hear the Rabbit say to itself, 'Oh dear! Oh dear! I shall be late!' (when she thought it over afterwards, it occurred to her that she ought to have wondered at this, but at the time it all seemed quite natural); but when the Rabbit actually TOOK A WATCH OUT OF ITS WAISTCOAT-POCKET, and looked at it, and then hurried on, Alice started to her feet, for it flashed across her mind that she had never before seen a rabbit with either a waistcoat-pocket, or a watch to take out of it, and burning with curiosity, she ran across the field after it, and fortunately was just in time to see it pop down a large rabbit-hole under the hedge.

Character Profile

Name: _____

Gender (male/female): _____

Age: _____

Birthplace: _____

Physical features (what does the character look like): _____

Type of home/ neighborhood: _____

Time in history: _____

Brothers and sisters: _____

Mother and father and their occupations: _____

Friends: _____

Enemies: _____

Other important people: _____

Likes and interests: _____

What bores or annoys the character?: _____

Attitude toward work or school: _____

Strongest positive personality trait: _____

Strongest negative personality trait: _____

Situation or problem the character is facing: _____

Find The Clues

Character Profile

Getting to know characters, whether they're fictional or real, is one of the things that makes reading interesting. We can learn a lot about characters just from small details. Look for the clues in the following passages and see what information you can pick up. How many answers on the character profile can you provide?

When she opened her eyes in the morning it was because a young housemaid had come into her room to light the fire and was kneeling on the hearth-rug raking out the cinders noisily. Mary lay and watched her for a few moments and then began to look about the room. She had never seen a room at all like it and thought it curious and gloomy. The walls were covered with tapestry with a forest scene embroidered on it. There were fantastically dressed people under the trees and in the distance there was a glimpse of the turrets of a castle. There were hunters and horses and dogs and ladies. Mary felt as if she were in the forest with them. Out of a deep window she could see a great climbing stretch of land which seemed to have no trees on it, and to look rather like an endless, dull, purplish sea. "What's that?" she said, pointing out of the window.

Martha, the young housemaid, who had just risen to her feet, looked and pointed also.

"That there?" she said.

"Yes."

"That's th' moor," with a good-natured grin. "Does tha' like it?"

"No," answered Mary. "I hate it."

"That's because tha'rt not used to it," Martha said, going back to her hearth. "Tha' thinks it's too big an' bare now. But tha' will like it."

"Do you?" inquired Mary.

"Aye, that I do," answered Martha, cheerfully polishing away at the grate. "I just love it. It's none bare. It's covered wi' growin' things as smells sweet. It's fair lovely in spring an' summer when th' gorse an' broom an' heather's in flower. It smells o' honey an' there's such a lot o' fresh air -- an' th' sky looks so high an' th' bees an' skylarks makes such a nice noise hummin' an' singin'. Eh! I wouldn't live away from th' moor for anythin'."

Character Profile

Name: _____

Gender (male/female): _____

Age: _____

Birthplace: _____

Physical features (what does the character look like): _____

Type of home/ neighborhood: _____

Time in history: _____

Brothers and sisters: _____

Mother and father and their occupations: _____

Friends: _____

Enemies: _____

Other important people: _____

Likes and interests: _____

What bores or annoys the character?: _____

Attitude toward work or school: _____

Strongest positive personality trait: _____

Strongest negative personality trait: _____

Situation or problem the character is facing: _____

Comparing Characters

Alice & Mary

In the passages below, Mary Lennox from *The Secret Garden* and Alice from *Alice's Adventures in Wonderland*, are two young girls who both find themselves in strange new places. Read the passages below and compare how they respond to their new surroundings.

The Secret Garden

On and on they drove through the darkness, and though the rain stopped, the wind rushed by and whistled and made strange sounds. The road went up and down, and several times the carriage passed over a little bridge beneath which water rushed very fast with a great deal of noise. Mary felt as if the drive would never come to an end and that the wide, bleak moor was a wide expanse of black ocean through which she was passing on a strip of dry land.

"I don't like it," she said to herself. "I don't like it," and she pinched her thin lips more tightly together.

Alice's Adventures in Wonderland

Either the well was very deep, or she fell very slowly, for she had plenty of time as she went down to look about her and to wonder what was going to happen next. First, she tried to look down and make out what she was coming to, but it was too dark to see anything; then she looked at the sides of the well, and noticed that they were filled with cupboards and book-shelves; here and there she saw maps and pictures hung upon pegs. She took down a jar from one of the shelves as she passed; it was labeled 'ORANGE MARMALADE', but to her great disappointment it was empty: she did not like to drop the jar for fear of killing somebody, so managed to put it into one of the cupboards as she fell past it.

"Well!" thought _____ to herself, "after such a fall as this, I shall think nothing of tumbling down stairs! How brave they'll all think me at home! Why, I wouldn't say anything about it, even if I fell off the top of the house!" (Which was very likely true.)

Down, down, down. Would the fall NEVER come to an end! "I wonder how many miles I've fallen by this time?" she said aloud.

Comparing Characters

Alice & Mary

Use the chart below to record any similarities or differences in the way Mary and Alice respond to the places they are entering. You might not have an answer for each box on the table.

	Similarities	Differences
Places		
Character's thoughts and attitudes. Are they positive or negative?		
Characters' actions. Even very small actions are important.		

Look at the chart. How are Alice and Mary different from one another? Fill in the blanks to create a comparison.

Even though Mary and Alice both _____,
they are very different people. When Mary finds herself in a _____ place she
_____, whereas Alice in a _____
place _____.



Find The Clues

Authors don't always tell you exactly where the setting is. Instead, they might give you lots of clues. See if you can find the clues in this passage that tell you what the setting is.

On and on they drove through the darkness, and though the rain stopped, the wind rushed by and whistled and made strange sounds. The road went up and down, and several times the carriage passed over a little bridge beneath which water rushed very fast with a great deal of noise. Mary felt as if the drive would never come to an end and that the wide, bleak moor was a wide expanse of black ocean through which she was passing on a strip of dry land.

Quiz Questions

1. The main character, Mary, is sitting inside a _____ that is (stopped or moving) _____.

1a. Underline the clues in red.

2. What time of day is it? A. Middle of the day B. Early morning C. Nighttime

2a. Underline the clues in blue.

3. How would you describe the weather conditions? _____

3a. Underline the clues in yellow.

4. Do you think the author wants readers to think of this setting as a scary place or a safe place for Mary? _____

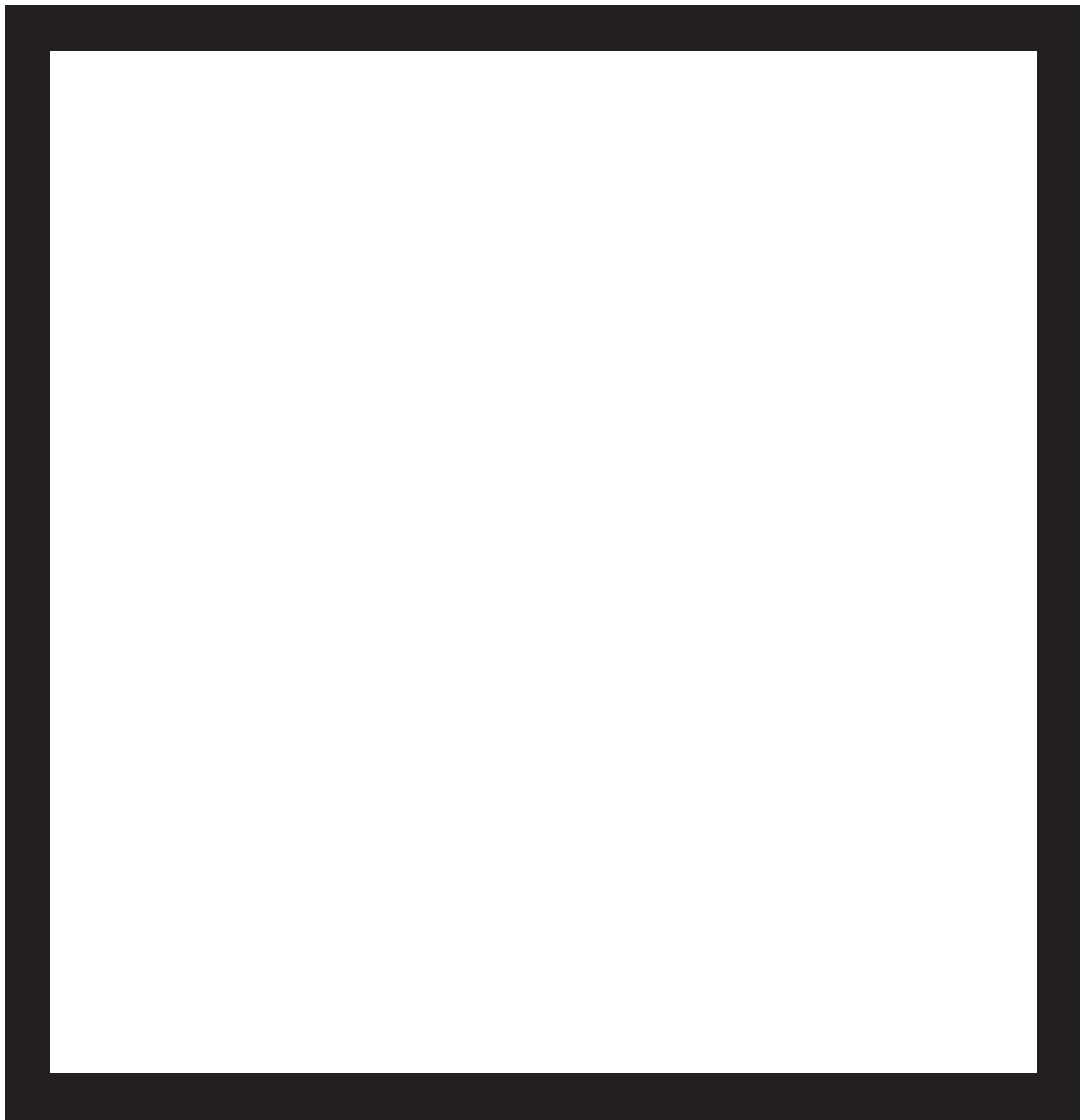
4a. Underline the words or phrases that support your answer in green.

5. Find the metaphor! In this passage the author compares the moor to something else. What is it?



Find the Clues

Draw a picture below to illustrate the setting.



Write Your Own Setting

Part One: Create A Setting

Now, you try: Create your own setting for a story without naming where it is. You will plant clues in the text later.

1. Choose a Place: Mountains, ocean, house, neighborhood, forest, jungle, another galaxy, etc. (These are just some suggestions.)

Write your choice here:

2. Choose a Time of Day: Dawn, afternoon, dinnertime, middle of the night, sunset...any others you can think of.

Write your choice here:

3. Choose a Feeling: mysterious, scary, peaceful, exciting, fun, sad, stressful, romantic, adventurous.

Write your choice here:

4. Choose a Simple Action: driving, walking, eating dinner, doing homework, reading, watching tv, running away from something, talking to someone....

Write your choice here:

Sight

Write down as many words you can think of that describe what someone would be seeing in your setting.

Sound

What sounds might someone hear? Write as many as you can think of.

Feeling or Touch

These aren't feelings inside of you, but are physical feelings such as cold, wet, soft, etc.

Taste

Move on to the next worksheet and write up your setting.

Write Your Own Setting

Setting Clues Using The Five Senses

Authors use sensory details to help them communicate information about setting and character. Brainstorm some sensory words about the setting you created.

Here is an example with sensory words in **bold**:

*My shoes were **squeaking loudly** as I walked. I kept my eyes on the **shiny wood** floor, watching each step my feet were making, until I got to the microphone. It was **cool to the touch** -- very different from the general atmosphere, which was **stuffy, airless, and uncomfortably warm**. **Sweat dripped down my back**. I looked up and saw my classmates in rows that seemed to be **stretching out forever**. Their **faces** were a **blur**.*

Can you guess where this character is and what he is doing and feeling?



Imagine yourself as a character in this setting, either as the speaker or a member of the audience. What you would be seeing, hearing, feeling, smelling, or even tasting? The words you come up with will be sensory words that you can use in your description on the next page.

Write Your Own Dialogue

Dialogue is when two or more characters in a story speak to each other.

Using one of the situations below, write dialogue between two speakers. Go back and forth so each speaker has at least 6 turns.

Situations

- Someone is telling his or her best friend that he or she will be moving away.
- A student is asking a teacher to let her (or him) turn in an assignment late.
- Two animals are talking about their owners.

Punctuation Reminders!

Remember to put everything that people say in quotation marks. Commas, question marks, and periods go inside the quotation marks.

Punctuation Reminders!

Indicate who is speaking. There are two ways to do this:

- a. Say their names OR
- b. When two people are speaking back and forth, start a new paragraph whenever the speaker changes.

Examples:

A. "Where are you going?" Asked Jamie's mother.

"Oh, nowhere special" said Jamie.

B. "Did you clean your room like I asked?"

"Uh, well, sort of."

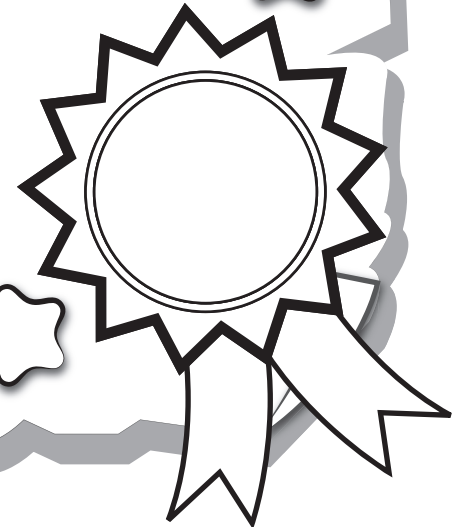
Write Your Own Dialogue

Now it's your turn to write your own dialogue. Use the previous page and reminders to help you.



Great job!

is an Education.com writing superstar



Answer Sheets

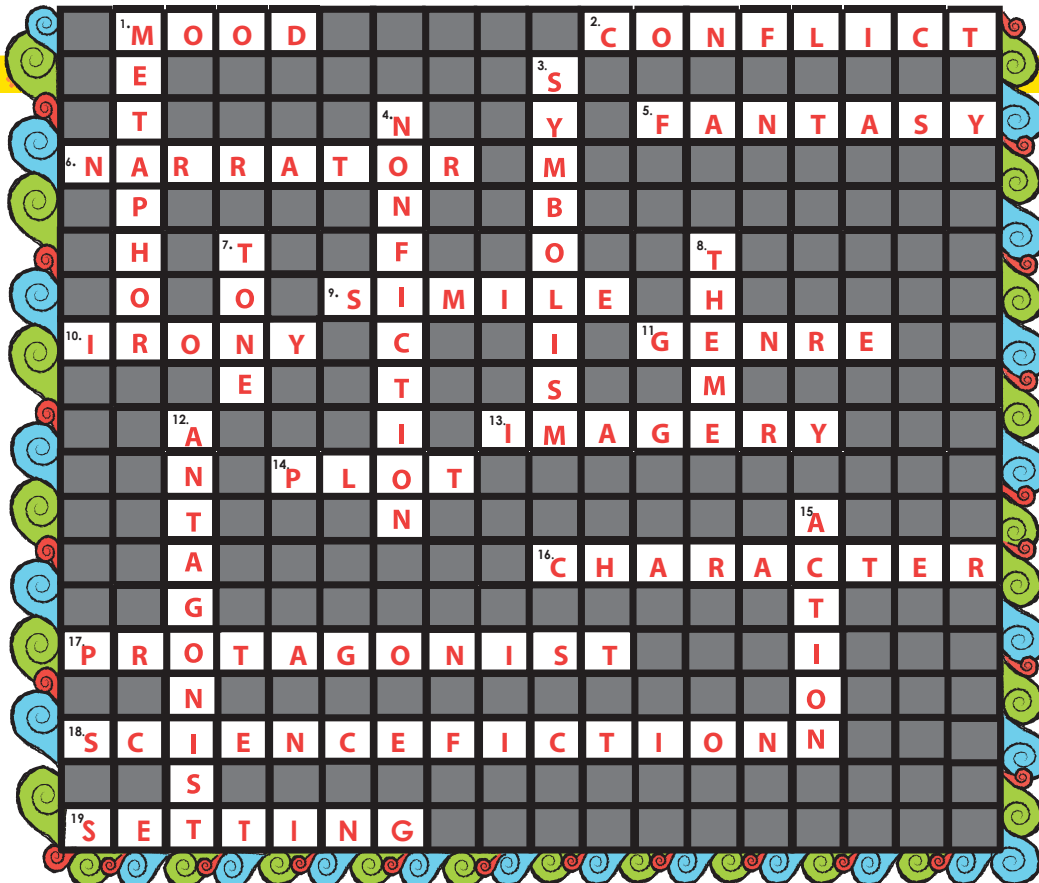
Reading Like a Writer, Writing Like a Reader

Crossword Puzzle

Want more workbooks? Join Education.com Plus to save time and money.
<http://www.education.com/education-plus/>

Answer Sheet

Crossword Puzzle



Across

- The atmosphere in a literary work, meant to evoke certain feelings from a reader.
- When a protagonist struggles to get what he wants this is called _____.
- Harry Potter is an example of a _____ book.
- The speaker in a literary work.
- "My love is like a red, red, rose" is an example of a _____.
- A technique in which a character or plot device is not as it would actually seem.
- The type of writing, such as fiction or nonfiction.
- "The sweet smell of orange blossoms reminded her of home." is called _____.
- The literary work's action, as well as all other circumstances that move the story along
- A person, human or non-human in the story.
- Greg Heffley is the _____ of The Diary of a Wimpy Kid.
- Star Wars is an example of a _____.
- "A long time ago in a galaxy far, far away" is a sentence that gives the _____ of the story.

Down

- "Your love is my sunshine" is an example of a _____.
- Something that represents or stands for another thing.
- The Diary of Anne Frank is an example of a _____ book.
- The author's attitude towards the story and/or the story's readers.
- The meaning or general ideas expressed in a work of literature.
- The Big Bad Wolf is the _____ of Little Red Riding Hood.
- The events that take place in a literary work.