

NOTICE

The purchaser agrees when purchasing this plan (the "Plan"): 1) the purchaser has acquired the right to build or construct the object or project set out in the Plan (the "Project") for his/her/its personal use only and not for any commercial use; 2) reproduction of the Plan in whole or in part by any means whatsoever is strictly prohibited; 3) Blueprints for the Handplan must be used for the construction of the Project or for any use of the Project or for any tools used to construct the Project or for any loss or damage resulting therefrom.

Note: Read all directions before beginning
 Carpenters Glue should be used to reinforce all joints
 Set all nails, countersink all screws.

Directions

1) Lay out your material on the workbench, as outlined in the suggested material layout (Fig. 1). Draw out all parts exactly as illustrated in the cutting diagram (Fig. 2), including the letter designations, in pencil. Cut out the parts with a sharp utility knife. Cut the pieces to the correct size. Before assembling, cut the pieces to the 1/8"

2) Lay out both pieces A and mark holes as shown (Fig. 3). Using the drill guide, (illustration 1) drill the twenty eight 1/4" holes to a depth of 1/2". Mark the positions of W, X, and P, remembering not to cover up the rabbet in A. Pre-drill with a 1/8" bit and glue and screw on these pieces with twenty four #8 Flathead screws, six for each W, and three each for X and P. Glue and nail J to front of C flush with top C with 1 1/2" finishing nails, nailing through J. Glue and nail B to H similarly, nailing through B. Stand the two A pieces on their front edge, glue and nail in the C assembly with 1 1/2" finishing nails, nailing through the pieces A. Ensure that the 1/4" inset on the rear of the pieces is free and that C is flush with the tops and fronts of the pieces B. Fit the B assembly on top of piece F, glue and nail to pieces B, with glue and nails. Fit the W pieces on the fronts of the pieces B, with glue and nails. Fit the X pieces on the fronts of the pieces B, with glue and nails. Fit the P pieces on the fronts of the pieces B, with glue and nails. Lay the head of glue in the insets of pieces A and place in piece T. Nail on piece T by nailing through T and into pieces A, C and B with 1" finishing nails.

NOTE: When cutting the piano hinge, it is necessary that one 38-1/2" piece and one 18-1/4" be cut from each 6' length in order that you have sufficient material.

OVER



Make a depth gauge for your drill - by drilling through a piece of wood the desired depth of drill and piece over drill bit.

DRILL DEPTH GAUGE ILLUSTRATION 1

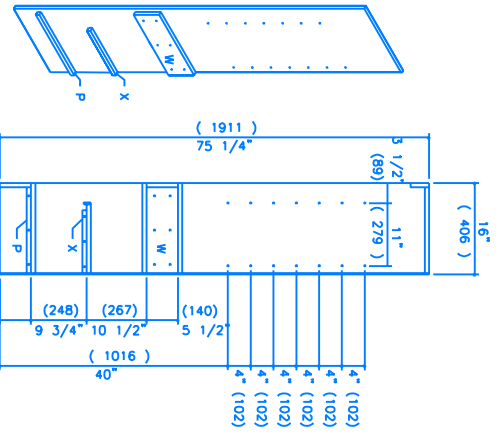
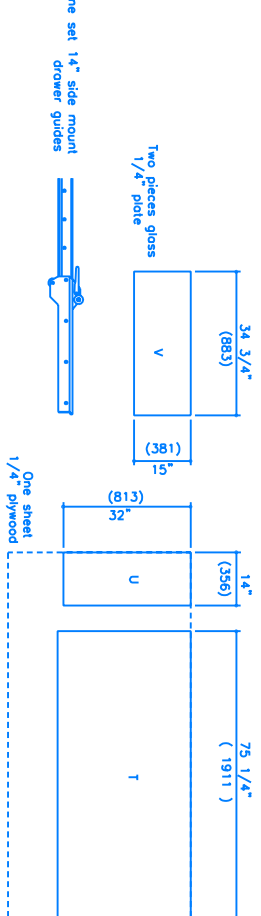
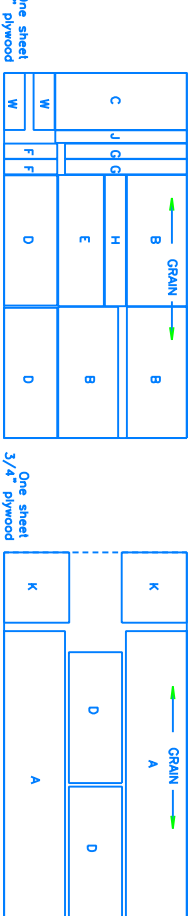
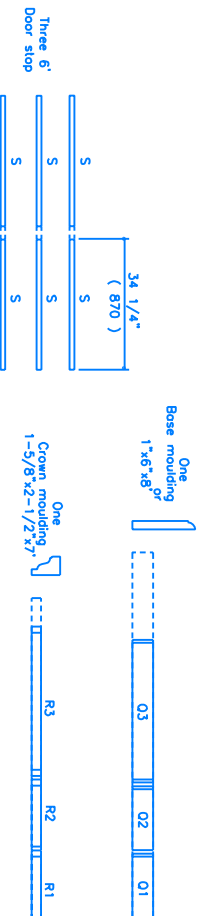
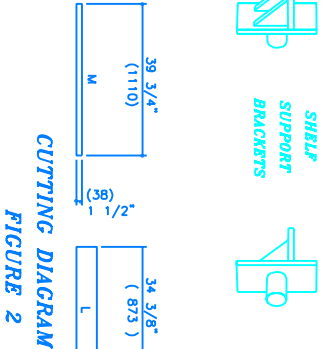
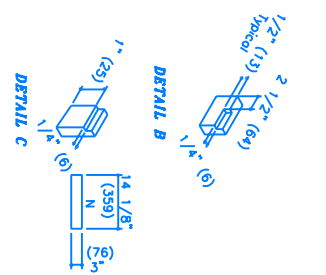


FIGURE 3



MATERIALS LAYOUT FIGURE 1



CUTTING DIAGRAM FIGURE 2

- MATERIALS LIST**
- Two 4'-8" sheets 3/4" Plywood, G2S (ACA)
 - One 4'-8" sheet 1/4" Plywood, G2S (ACA)
 - One 8' 1x6 3/4"x5 1/2"x8" base molding
 - One 6' 1x6 3/4"x5 1/2"x5" base molding
 - One 7' Crown Moulding (1-5/8"x2 1/2"x7")
 - Three 6' door stop (1-1/4"x3/8"x6")

- MATERIALS LIST**
- Sixteen 1/4" wood plug
 - Three pieces 1 1/2"x3 1/2"x15" pine glass
 - Sixteen screws door clips
 - One set of 14" side mount drawer guides & hardware
 - Two 6' lengths of 1-1/2" piano hinge C/W fasteners
 - Four Cupboard door pulls & one matching Drawer Pull
 - Four magnetic door latches with fasteners

- MATERIALS LIST**
- Sixteen shelf brackets (1/4" dia.)
 - 24" magnetic pull (1/4" dia.) (optional)
 - Forty feet 3/4" iron one envelope
 - Approx. 1/2 lb. 1-1/2" finishing nails
 - Approx. 1/2 lb. 1" finishing nails
 - Approx. fifty #8 1-1/4" flathead screws
 - Approx. twenty five #8 2-1/2" flathead screws

- MATERIALS LIST**
- Stain & varnish or oil
 - Sandpaper
 - Wood filler
 - Carpenters Glue