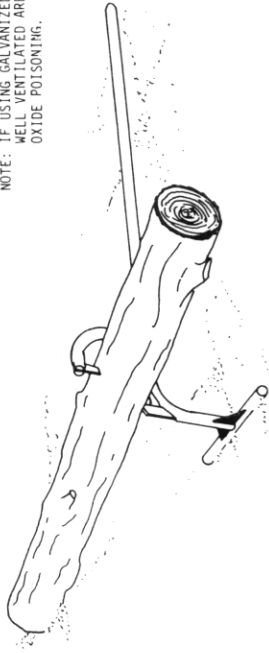
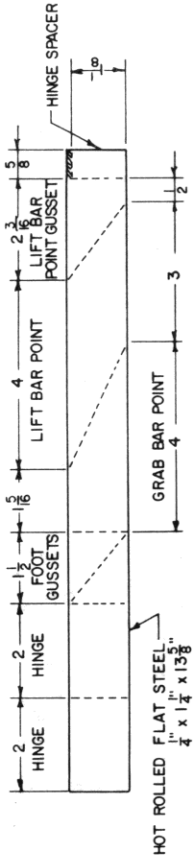


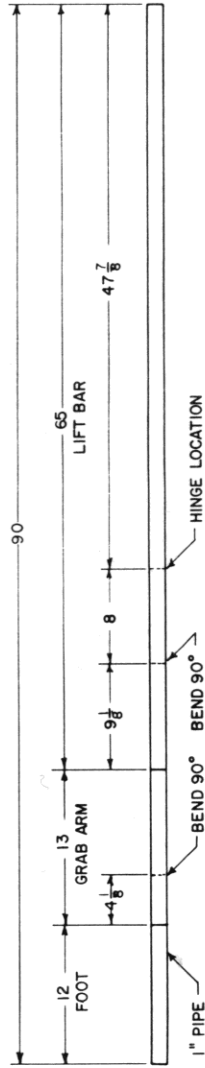
NOTE: IF USING GALVANIZED PIPE, WELD IN WELL VENTILATED AREA TO AVOID ZINC OXIDE POISONING.



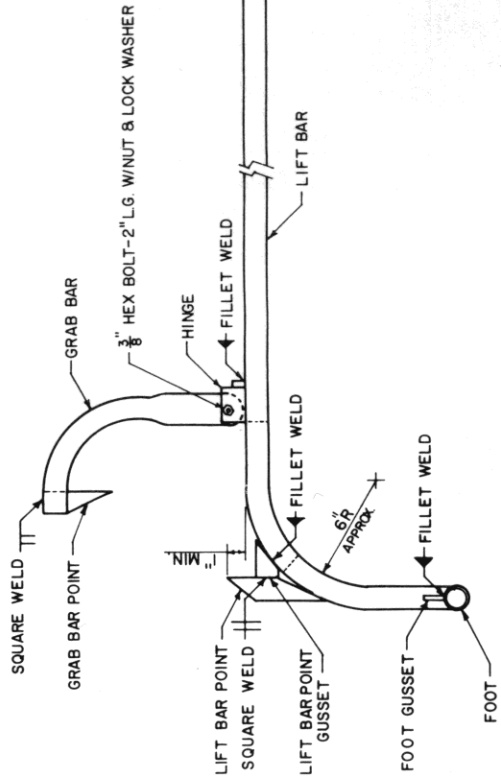
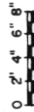
PERSPECTIVE NO SCALE



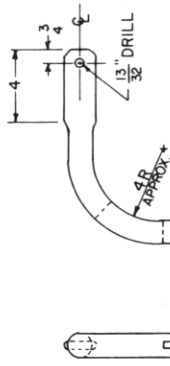
STRAP STEEL CUTTING DIAGRAM



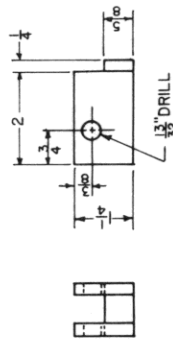
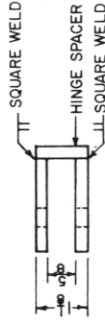
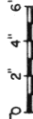
BLACK IRON PIPE CUTTING DIAGRAM



ASSEMBLY DRAWINGS



GRAB BAR DETAILS



HINGE DETAILS



COOPERATIVE EXTENSION SERVICE  
AGRICULTURE AND HOME ECONOMICS

AND  
UNITED STATES DEPARTMENT OF AGRICULTURE COOPERATING

12" LOG LIFTER

W VA '86 6379 SHEET 1 OF 1