

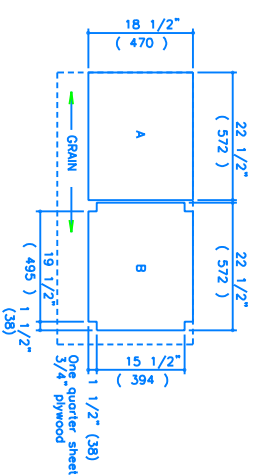
NOTICE

The purchaser agrees when purchasing this plan (the "Plan") that he or she will use the Plan only for the project set out in the Plan and will not use the Plan for any other project or for any commercial use, the Plan in whole or in part by any means whatsoever is strictly prohibited. Blueprints for the Homgymn should not be liable for any willful misuse or negligent use of this plan, the Project or any tools used to construct the Project, or any loss or damage resulting therefrom.

Directions

- 1) Lay out your material as outlined in the suggested materials layout (Fig 1). Draw out all parts exactly as illustrated, including the letter designations, in pencil. Ensure to leave a small space between cut lines to allow for the width of the saw. Before cutting, double check all measurements to ensure that they are correct. Always cut on the waste side of the line when cutting. Cross cut from top edge to bottom edge. Cut the 1 1/2" x 1 1/2" corners in piece B using a hand saw. Cut one end of each piece D to a 45 degree angle with the longest side of piece D being 30". Pieces F and G are cut with 45 degree corners each end, the measurement for each is given to the longest edge.
- 2) Lay out piece D as shown (Fig 2). Make a center line through D by measuring down 1 1/4" from top edge of D. Measure in 1 1/4" and 6" from end of D to give your center points. With a compass set at 1 1/4" draw a 2 1/2" circle around each center point. Measure from outside edges 1/2" and draw two lines. Cut out the shape with a jigsaw to resemble figure 2. Drill a 1" diameter hole on the 1 1/4" center mark for the dowel handle. Repeat for other D.
- 3) Layout pieces C (Fig 3). Draw your lines around all four sides with a square. Mark the top of pieces C so that they do not get put on upside down accidentally. Drill the center of the tops of pieces C 1" deep to accept the dowels, using dowel center markers. Mark and drill holes in the underside of A, 1 1/2" deep. Sand ends of each dowel to create a taper to facilitate easier insertion. Apply glue to dowels and assemble pieces C and A. Place B in position and turn assembly on its side. Pre-drill a hole through each leg into B (Fig 5) with a 1/16" bit. Nail through C into B with one 2" finish nail each corner. Using pipe clamps, lightly clamp A and Cs together. Make sure the assembly is square before you leave it to let the glue set for one hour.

OVER



MATERIAL LAYOUT
FIGURE 1

FIGURE 4

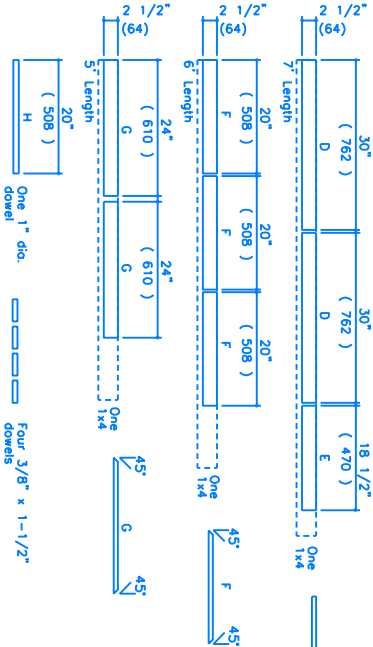
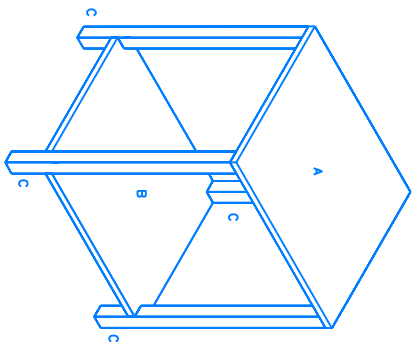
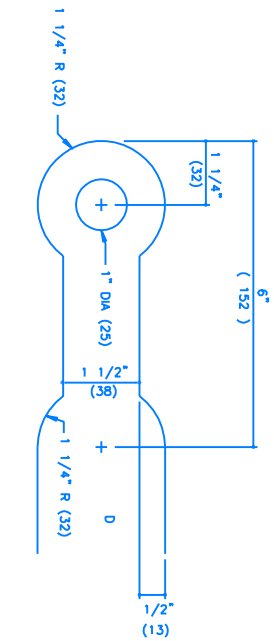
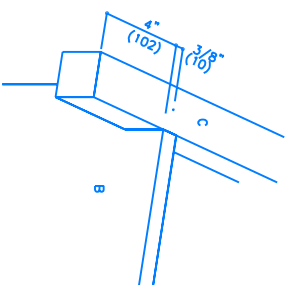
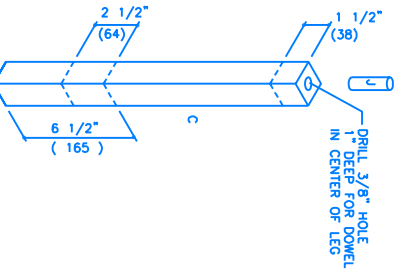


FIGURE 5



HANDLE DETAIL
FIGURE 2

FIGURE 3



CASTER



DRILL DEPTH GAUGE
ILLUSTRATION 1



Make a depth gauge for your drill — by drilling through a 3/4" x 3/4" piece of wood lengthwise. Cut wood to give desired depth of drill and place over drill bit.

MATERIALS LIST

- Carpenter's glue
- Sandpaper
- Wood filler
- Stain or paint
- Approx. Twenty 1 1/2" #8 flothead screws
- Approx. Eight # 8 flothead screws
- Two 5" x 2-1/2" (1 1/2" x 1 1/2")
- One 7" x 1-1/4" (3/4" x 3/4" x 1/2")
- One 6" x 1-1/4" (3/4" x 3/4" x 1/2")
- One 5" x 1-1/4" (3/4" x 3/4" x 1/2")
- 20" of 1" dowel
- 8" of 3/8" dowel
- Four 2 1/2" casters, complete
- One quarter sheet 3/4" plywood

TOOLS

- Pencil
- Compass
- Handsaw
- Table saw, or hand saw
- Drill
- 1/16" bit

TOOLS

- 1" bit
- Hammer
- Measuring tape
- Square
- Nail set
- Miter box
- Screw driver

TOOLS

- Dowel marker
- Pipe clamps
- Square
- Pully knife
- 1/4" bit
- 1/8" bit