

Tree-mendous

Trees

2nd
GRADE



MONKEY

BEAR

RACCOON

SQUIRREL

SLOTH

KOALA

FOX



Table of Contents

Tree-mendous Trees

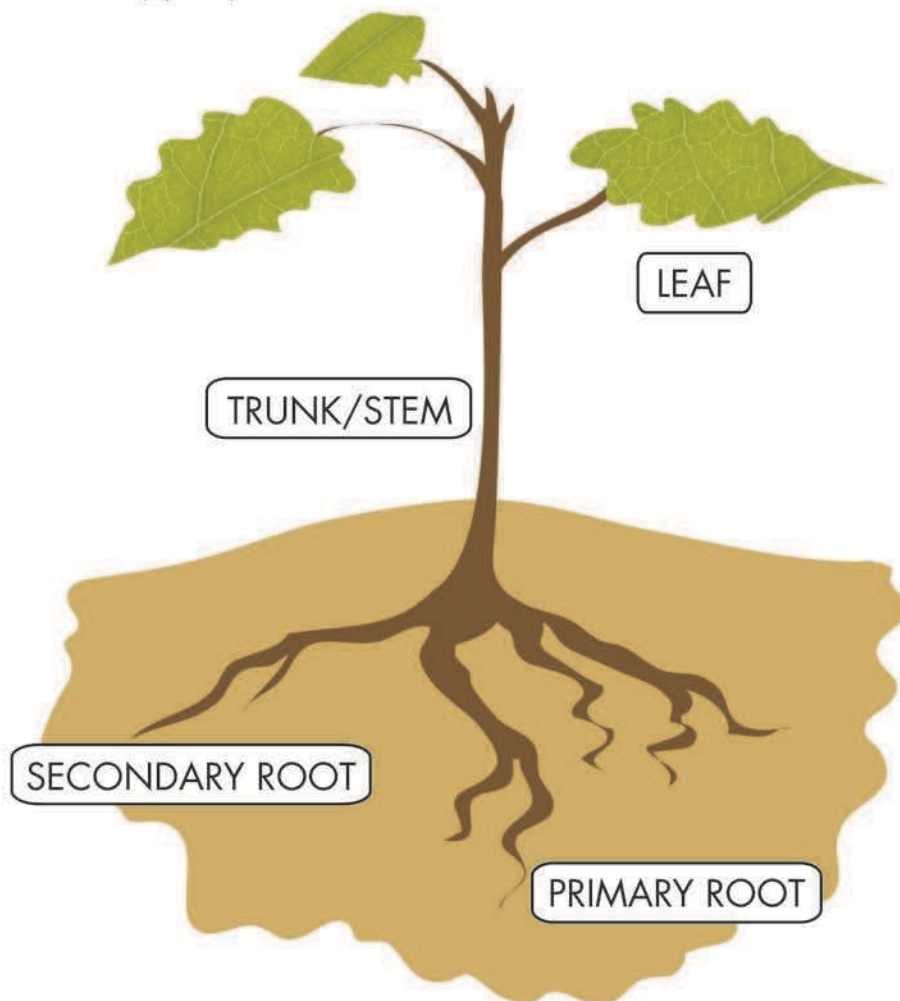
Parts of a Tree
How to Draw a Tree
Tree Scramble
Tree Measuring
How Does It Grow? Apple Tree
A Tree for All Seasons
The Giving Tree
Growing Trees
Tree Treats
Tree Rings
How Old is That Tree?
Tree Stump Word Search
Sorting and Ordering Trees
Activity: Leaf Walk
Tree Climbers
The Rainforest is a Home #1
The Rainforest is a Home #2
Tree is a Home

Certificate of Completion

Want more workbooks? Join [Education.com Plus](http://www.education.com/education-plus/) to save time and money.
<http://www.education.com/education-plus/>

Parts of a Tree

Trees have different parts that serve their own special functions. The **primary root** of the tree is the thickest. It holds the plant in the soil and takes in water and nutrients.. The **secondary root** branches from the primary root. It helps support the tree, and also takes in water and nutrients from the soil. A tree's **leaves** use light and energy from the sun to make sugar and carbon dioxide to feed the plant. Lastly, the stem or **trunk** keeps distance between the leaves and and the soil while carrying nutrients from the roots to the upper parts of the tree.



I take in lots of water from the soil and hold the tree firmly in place. I am the...

_____.

I keep distance between the leaves and the soil, while delivering food. I am the...

_____.

I use light and heat to make food for the rest of the tree. I am the...

_____.

I assist the larger root in supporting the tree, as well as taking in water. I am the...

_____.

HOW TO DRAW A TREE

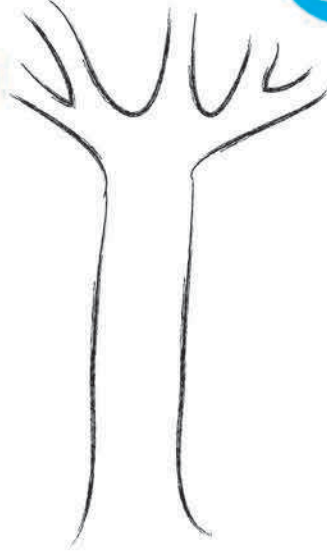
Follow these easy steps to turn a couple of lines into a lush apple tree.

1



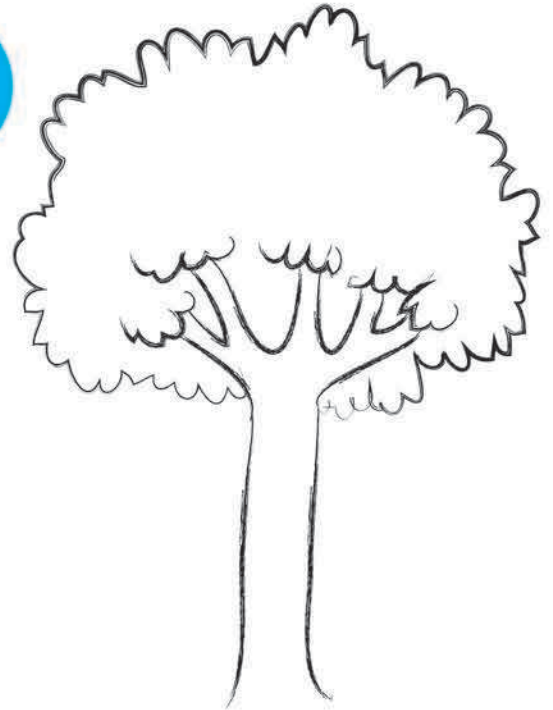
Start by drawing the trunk.

2



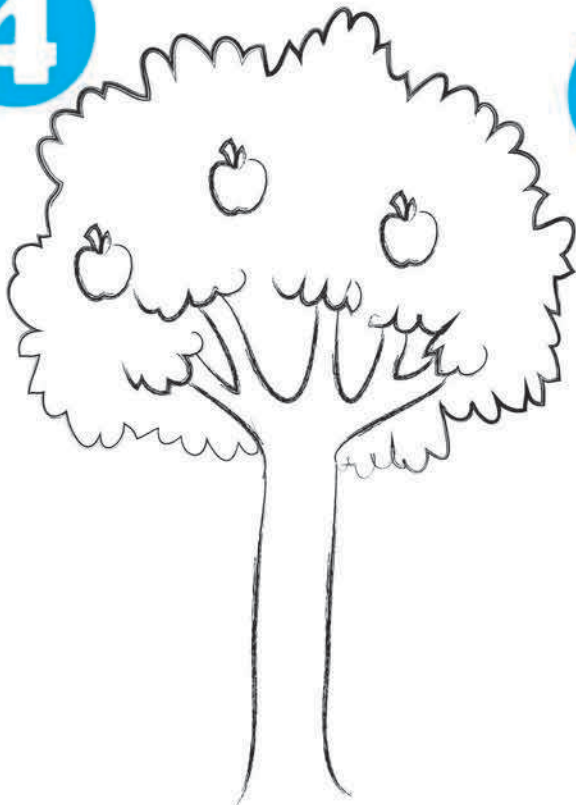
Next, add some branches.

3



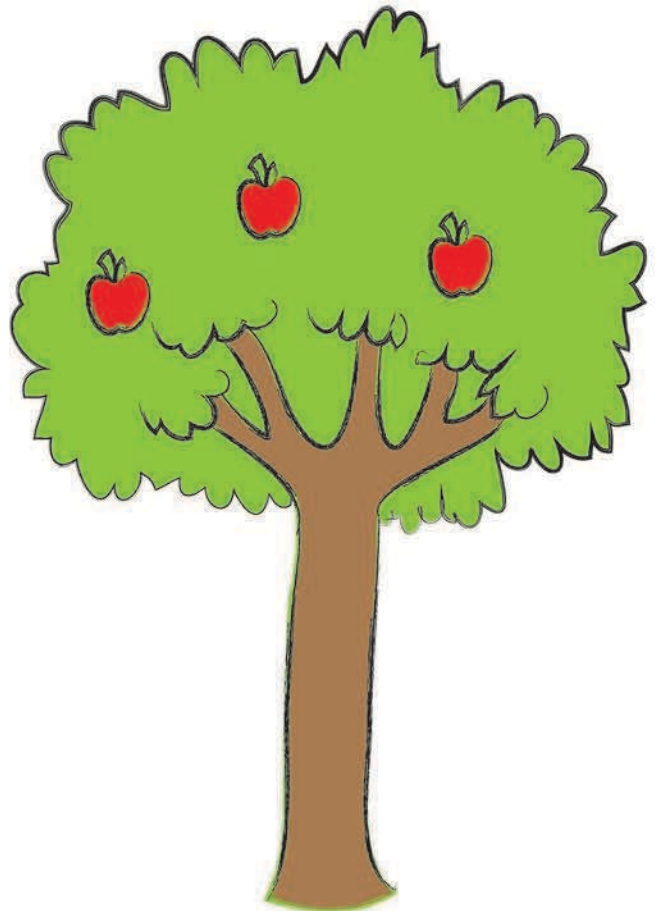
Then, add the leaves.

4



Finish off by adding some fruit.

5



Don't forget to add color to your final picture!

TREE SCRAMBLE

Unscramble the letters to reveal parts of a tree. You can experiment with different words from the box below.

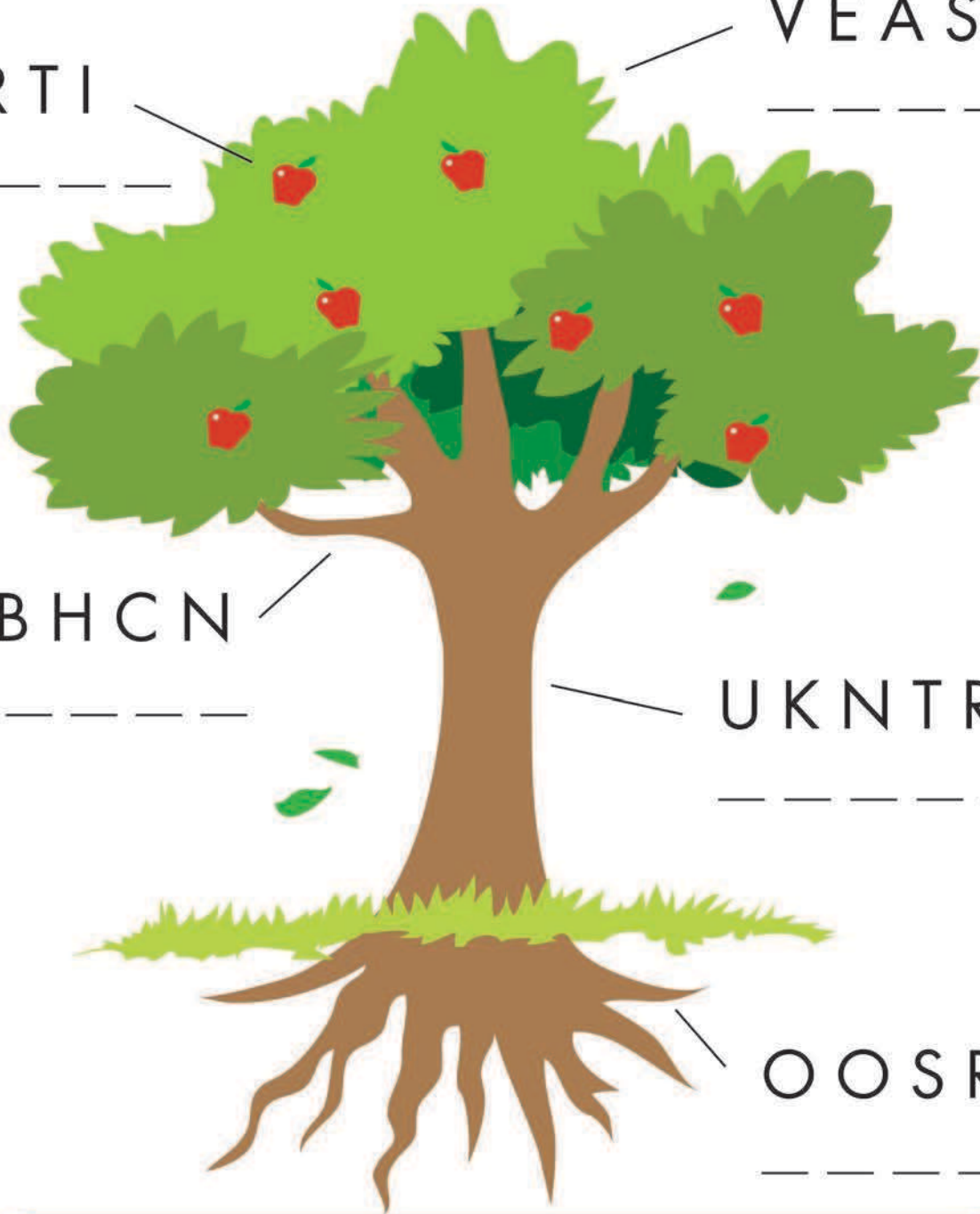
U F R T I

V E A S L E

R A B H C N

U K N T R

O O S R T



BRANCH

LEAVES

STUMP

GRASS

FRUIT

NEEDLES

TALL

NEST

THORN

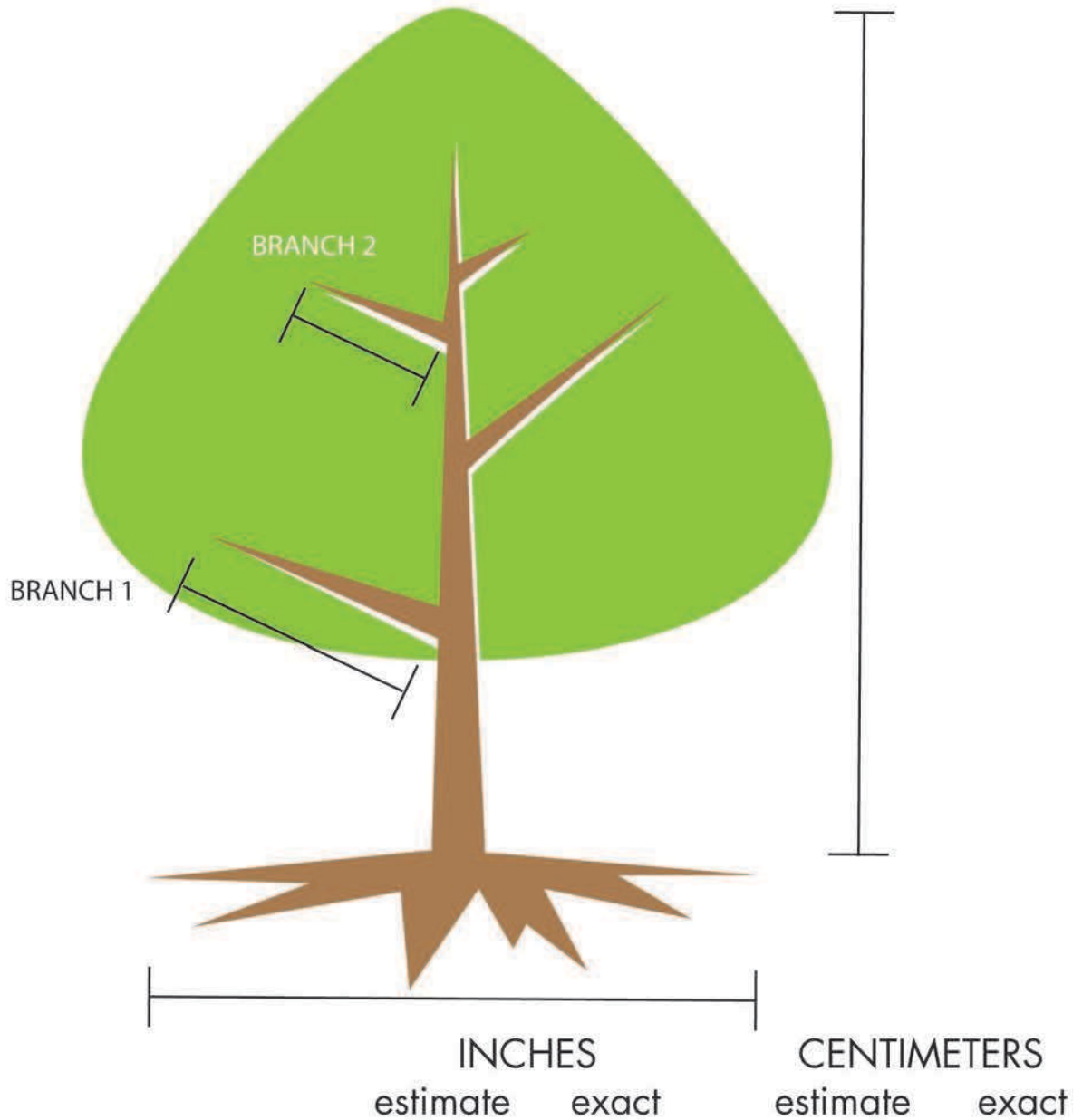
ROOTS

GREEN

TRUNK

TREE MEASURING

Use a ruler to measure this tree. First, write down your estimate of the length to the nearest inch and centimeter. Then, use a ruler to perform a more accurate measurement, again rounding to the nearest inch or centimeter.



How tall is the tree?

How long is branch 1?

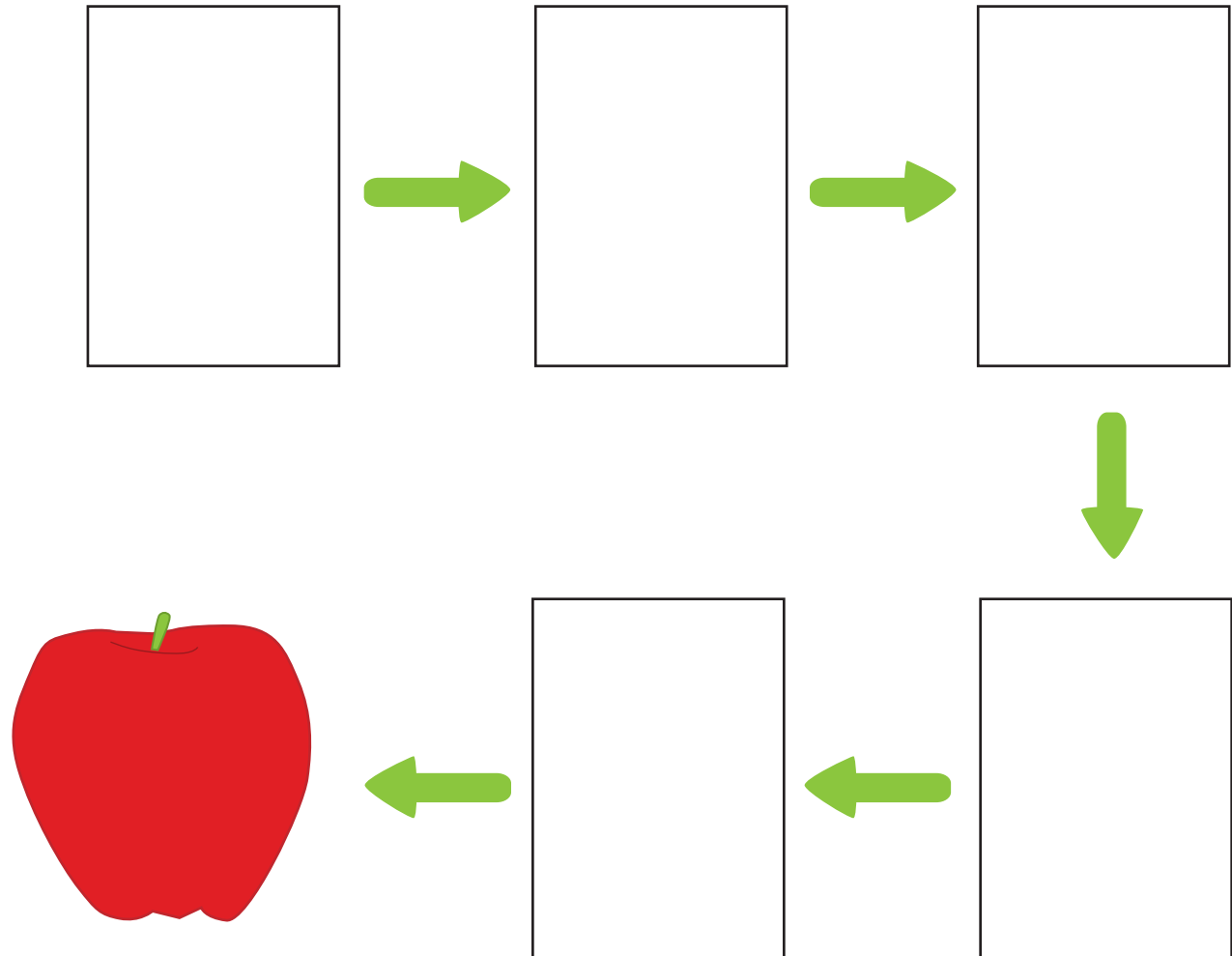
How long is branch 2?

How wide are the tree's roots?

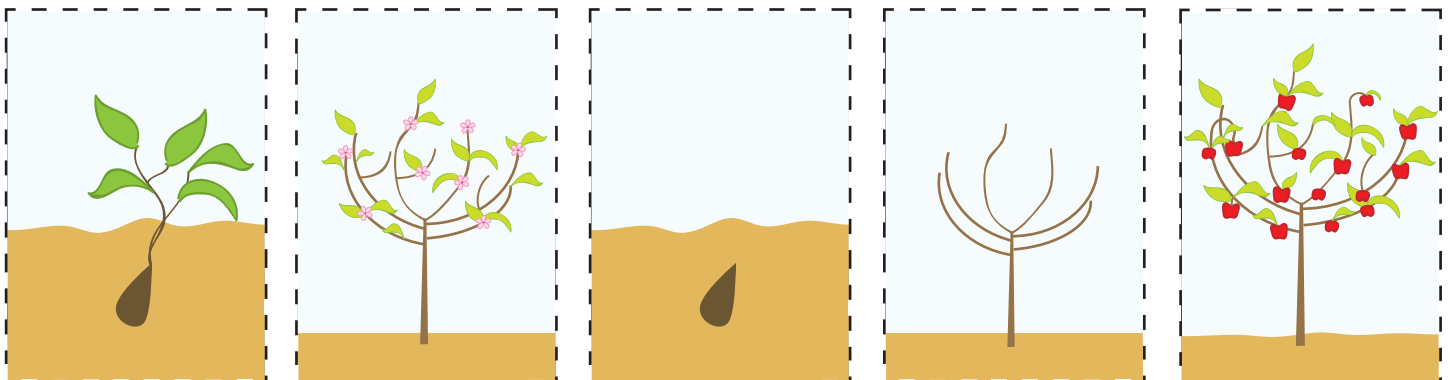


How Do Apples Grow?

Some apple trees will grow over 40 feet high and live over 100 years!



CUT OUT THE PIECES AND PASTE THEM IN ORDER OF GROWTH



A TREE FOR ALL SEASONS

Some trees keep green leaves or needles all year long. These types of trees are called evergreens. Other trees have leaves that change, depending on the amount of sunlight they receive and the temperature that surrounds them. Trees that lose their leaves will shed them during the cold and dark winter months. During the spring, new leaves grow, and they are green in the warmer climate. They continue to sway in the breeze during the warm and sunny summer months. When fall arrives and the sun is not shining quite as bright, the leaves will change color.

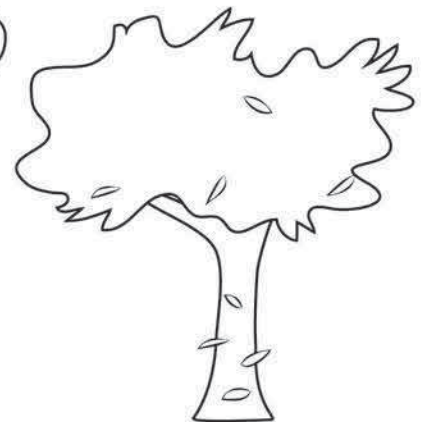
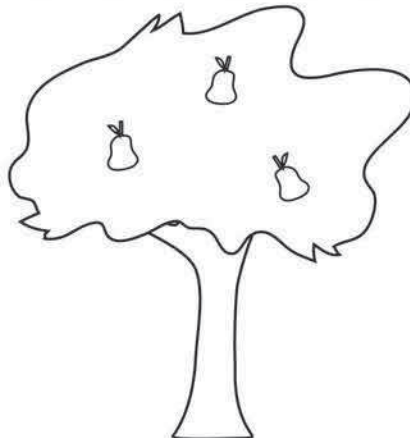
Directions: Color the pictures below. Cut out the pictures and paste them into the box with the correct season.

SPRING

SUMMER

FALL

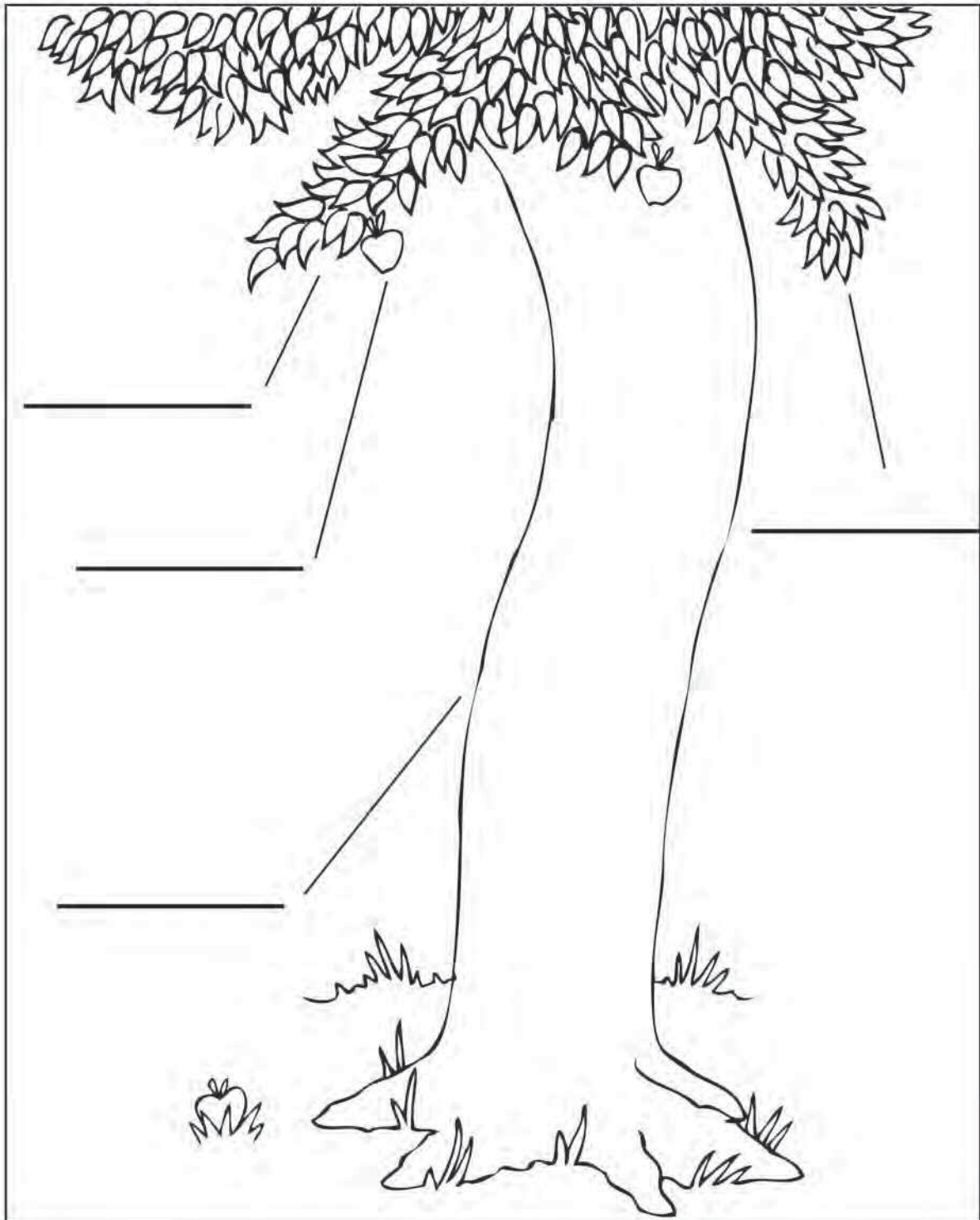
WINTER



THE GIVING TREE

Directions: After reading *The Giving Tree*, see if you can remember all of the parts of the tree that the boy enjoyed. Use the word bank to help you label the parts of a tree. Then, color the tree.

You can also listen to *The Giving Tree* being read by the author, Shel Silverstein here: <http://www.youtube.com/watch?v=1TZCP6OqRIE>



THE GIFTS OF THE GIVING TREE

In *The Giving Tree* by Shel Silverstein, how did the boy use these gifts from the tree?

Apples

Leaves

Trunk

Branches

Shade

Can you think of other gifts we get from trees?

Example:

From the fruit of the tree, we get jam.

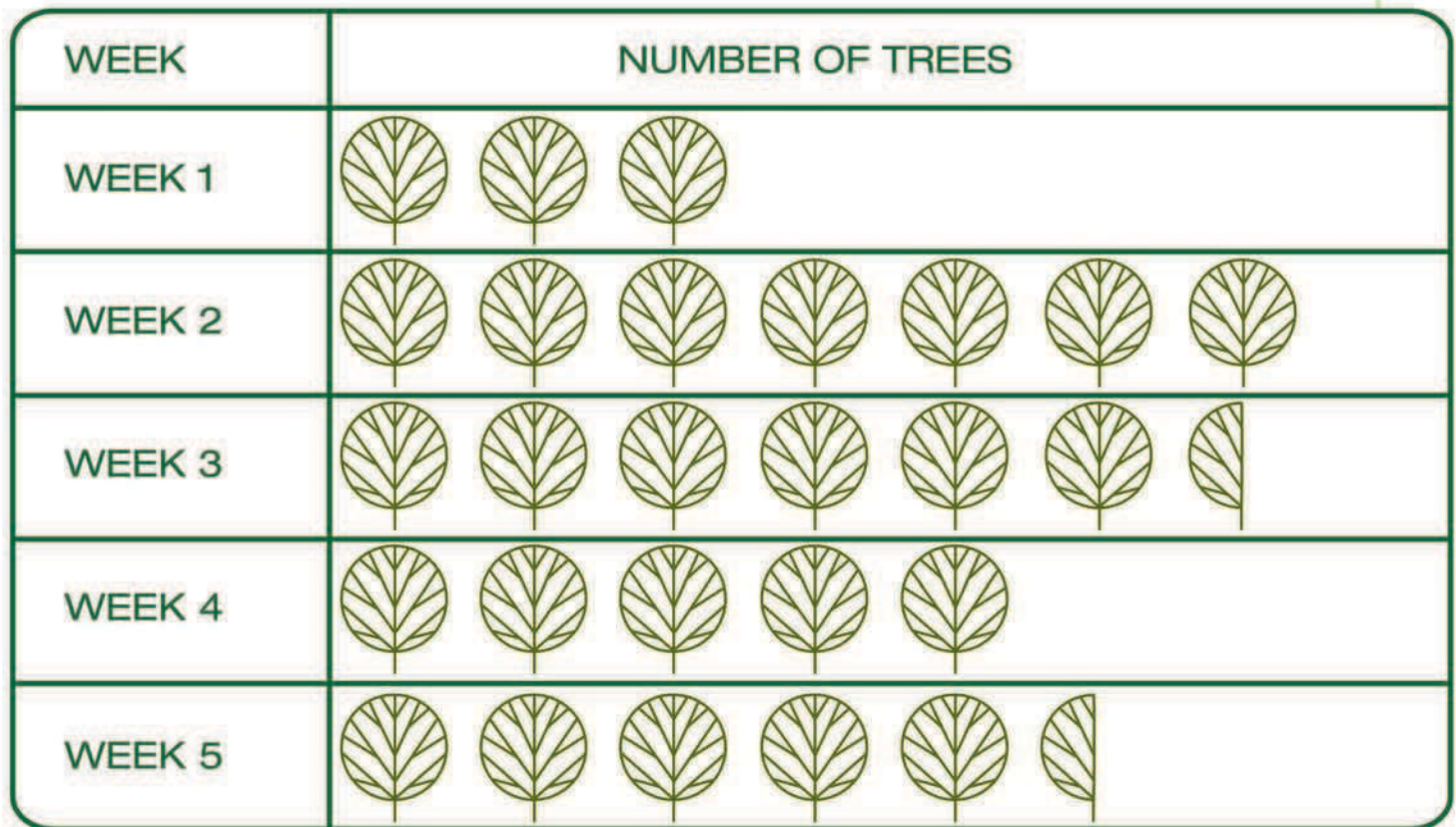
From the trunk of the tree, we get paper.



GROWING TREES

Trees are important natural resources. Find out how many trees Bobby planted in the past few weeks by reading the pictograph below. Then, answer the questions.

Note: each tree in the pictograph stands for 2 trees.



= 2 trees

1. What does this symbol represent?

2. How many trees did Bobby plant in week 3?

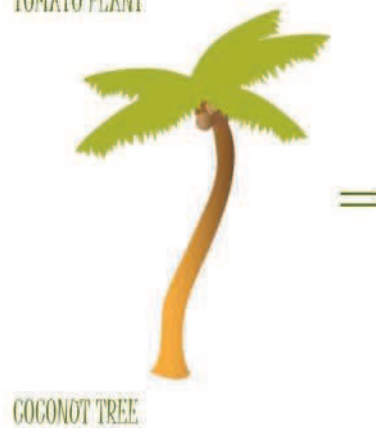
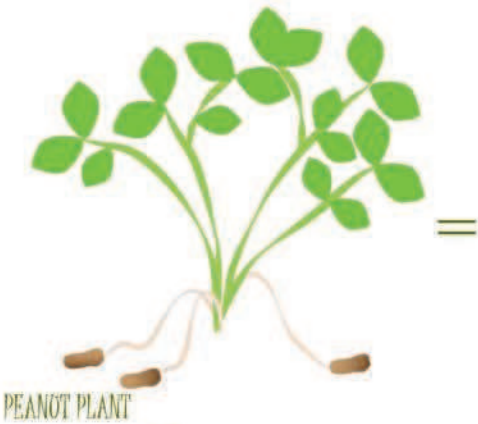
3. In which week did Bobby plant the fewest trees? How many did he plant that week?

4. In which week did Bobby plant the most trees? How many more did he plant in that week than in week 1?

5. Draw symbols to represent 5 trees.

TREE TREATS

Trees provide many things for us. Draw one snack or food item that is provided by each type of tree that you see below.

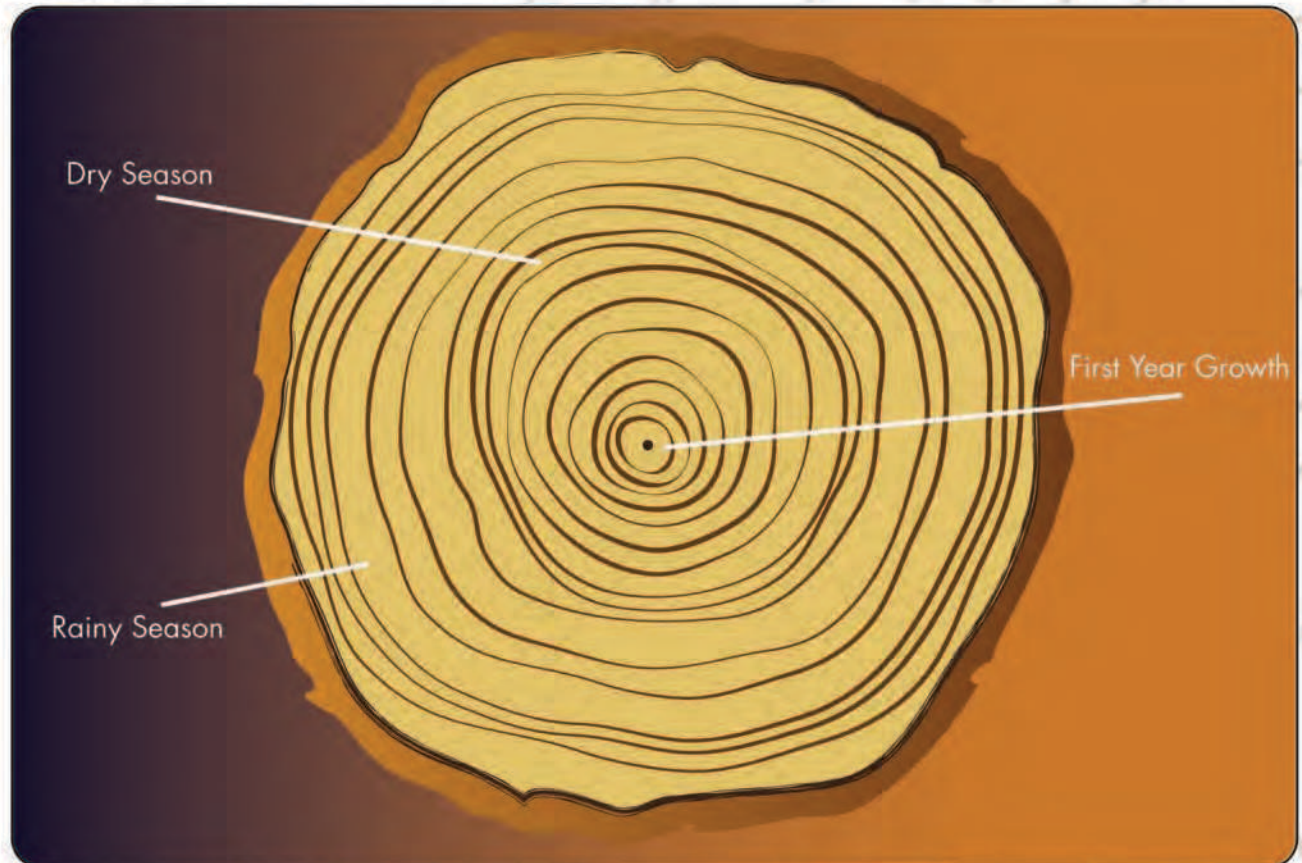


READING TREE RINGS

Every year a tree grows, new layers of bark are formed. For each year the tree has been alive, a ring can be seen in the cross-section of the trunk. New bark grows in the spring and summer months. In the spring, wood grows faster and is lighter because the bark is made of larger cells. In the summer, wood grows slower, darker, and is made up of small cells. This is seen in the cross-section of a trunk; there are light and dark rings!

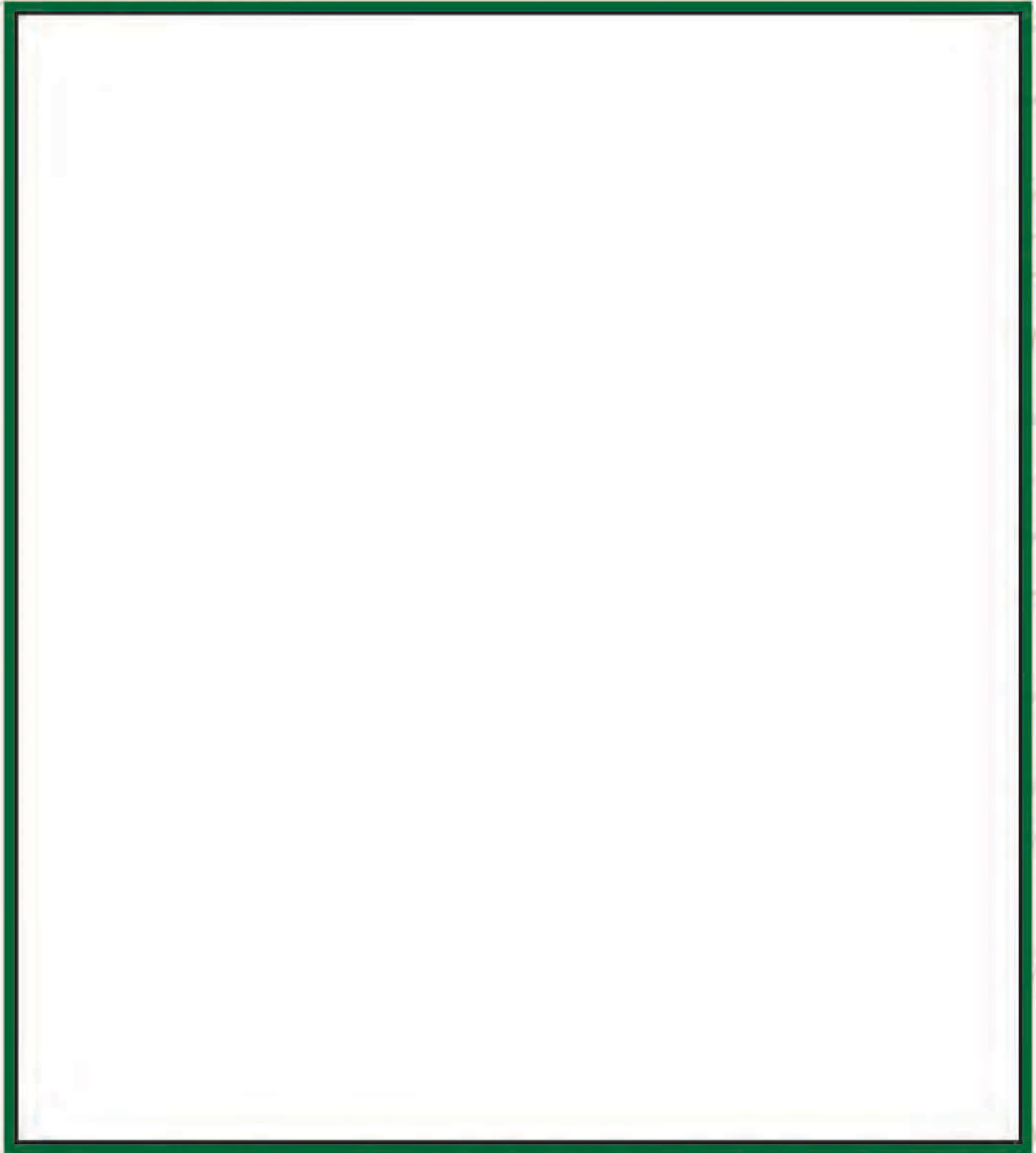
The rings may appear larger on one side of the tree; this is because there might have been something next to the tree, causing it to lean to one side. The tree had to grow extra bark on the side being leaned on to compensate for the extra weight. Lastly, you can see how good the rainfall and sunshine was for the tree in a given year by inspecting how the rings are spaced out. If the rings are far apart from each other, then the tree was well-nurtured that year.

Below is a diagram of a tree who has seen a few years. Can you tell how old it is?



READING TREE RINGS

Use what you've learned to create a set of tree rings with a history of your own. Consider what you've learned about telling how old a tree is, what kind of weather it received, and whether or not it leaned to one side or another.



HOW OLD IS THAT TREE?

What You Need:

Tree

Measuring tape

Marker

Pen

Paper

Helper

What You Do:

Help your child find a tree that is at least as tall as a grown up and have your child wrap the measuring tape around the widest part of the trunk. (A grown up might need to help with this part!) The distance around the trunk of a tree is called the circumference. Write this measurement down on a piece of paper.



The measurement of the circumference in inches is also the approximate age of the tree in years!

Did You Know?

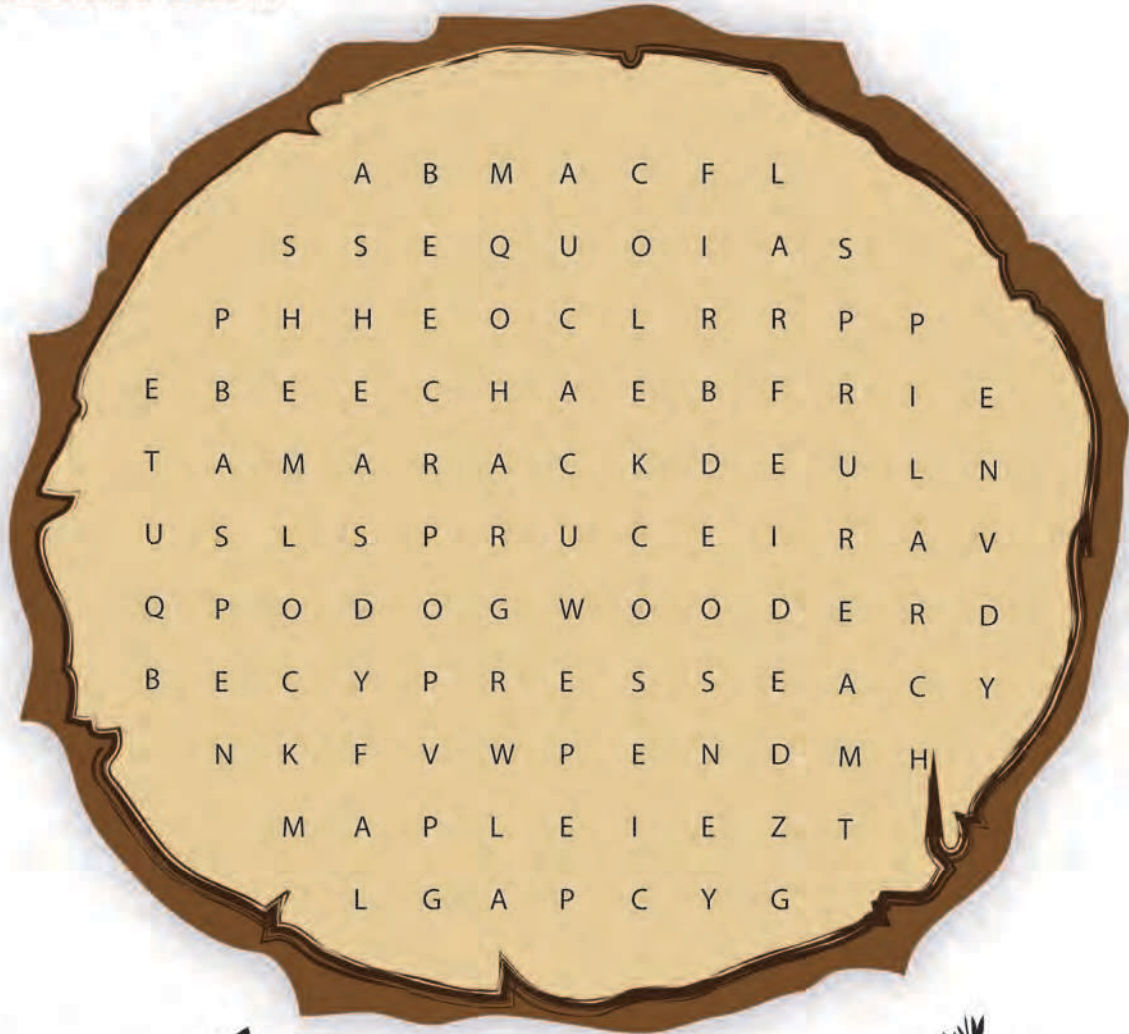
Every year a new layer of growth occurs just under the bark. Some trees like firs and redwoods may grow more than this in a year, while others like cedars may grow less. This method is a good rule of thumb to estimate the age of a tree.



TREE STUMP WORD SEARCH

Trees are separated into two categories: coniferous and deciduous. Conifer trees have long, thin needle leaves, and bear cones (pinecones!). Deciduous trees have broad leaves that change color with the seasons.

Try to find different types of coniferous and deciduous trees hidden in the word search below.



Deciduous



Coniferous



Ash

Dogwood

Cedar

Pine

Aspen

Maple

Fir

Sequoia

Beech

Mulberry

Hemlock

Spruce

Cypress

Oak

Larch

Tamarack

SORTING AND ORDERING TREES!

What You Need:

4-5 different-sized leaves

12" x 18" construction paper or two 8.5" x 11" papers taped together

Glue

What You Do:

Take a nature walk. Gather four or five of your child's favorite colored leaves from a park or your backyard. If you live in a four-season climate, take advantage of the brilliant crimson, gold, and brown leaves. If you live in an all-year sunny climate, just collect interesting leaves of various types and sizes.

When you get home, spread the leaves around your work table. Point out the different sizes of leaves to your child, small, medium, and large. Ask her to put the leaves in piles of small, medium, and large. For very young kids, you can sort into just small and large leaves.



Put your large piece of construction paper on the table. Tell your child she can line the leaves up from smallest to largest. Have her put the smallest leaf to the left and the biggest leaf on the right side of the paper. Continue asking her questions such as "Which leaf comes next? Which leaf is the next biggest?"

Once she has them lined up correctly, show her how to make small dots of glue on the backs of the leaves. She can then glue the leaves on the paper from smallest to largest. (Make sure she glues them back on in the right place.) Have her write her name on the paper and lay it aside to dry.

When it's finished, you now have a wonderful, autumn leaf collection to hang on your wall as a decoration. Refer back to this helpful visual whenever you ask your child questions about relative size. You can also use it to discuss with her the four seasons and how the trees change with each season.



LEAF CHART

ACTIVITY: LEAF WALK

Go for a walk with an adult and collect 10 leaves with different shapes. Once you're back home, use this chart to figure out what type of leaves you found.

LANCEOLATE



OBOVATE



LINEAR OR
RECTANGULAR



STAR-SHAPED



DELTOID



HEART-SHAPED
OR ORBICULAR



OVAL



ELLIPTICAL



OVATE



TREE CLIMBERS

The animals listed on the tree are all good climbers. Can you find them in the word search below?



MONKEY

BEAR

RACCOON

SQUIRREL

SLOTH

KOALA

FOX

LEOPARD

W	S	A	N	I	N	Y	V	I	N	G	K
N	O	O	R	O	Q	T	M	K	W	V	C
N	D	K	K	N	O	Y	E	K	N	O	M
L	T	T	I	Q	Q	C	A	F	J	K	A
B	F	H	M	V	K	L	C	W	E	L	Y
S	Q	U	I	R	R	E	L	A	A	D	F
D	R	A	P	O	E	L	B	O	R	O	E
K	X	Q	T	Q	P	Q	K	E	X	Y	V
A	N	W	S	V	D	F	E	B	A	U	M
X	P	J	H	B	R	W	B	M	N	R	Z
H	T	O	L	S	V	A	O	F	N	A	L
Y	G	G	V	Z	Y	X	X	E	J	X	O

THE RAINFOREST IS HOME

The tropical rainforest is a place where the weather is warm all year round and a great amount of rain falls. Because of the warm climate and large amounts of rain, a tropical rainforest has more kinds of trees than any other area in the world. Over half of all types of plants and animals live in rainforests, and tropical rainforests produce almost half of the Earth's oxygen. Unfortunately, the rainforests of the world are being destroyed and damaged.

Directions: Think of 5 ways you can help save these animals and their homes. Talk to an adult about your ideas.











THE RAINFOREST IS HOME

Directions: Find and circle each hidden rainforest animal in the picture below. A few may be hidden in the background.

Harpy Eagle
King Cobra
Bengal Tiger

Dawn Bat
Chimpanzee
Two-toed Sloth

African Forest Elephant
Golden Lion Tamarin
Yellow-browed Toucanet

Southern Cassowary



TREES ARE HOME TO MANY DIFFERENT ANIMALS

Trees are home to many different animals if you look hard enough. Can you find all the tenants taking up residence in this tree? After you find them, start coloring!



Great job!

is an Education.com science superstar

