

NOTICE

The purchaser agrees when purchasing this plan (the "Plan") that he or she understands the right to build or construct the object or project set out in the Plan (the "Project") for his/her/its personal use only and not for any other purpose. The Plan in whole or in part by any means whatsoever is strictly prohibited.
 3) Blueprints for the Handyman Project require the use of the Plan, the Project or for any loss or damage resulting therefrom."

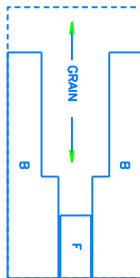
NOTE: Read all directions before beginning

Changes in color should be used to reinforce all joints
 Countersink all screws and set all nails
 Dimensions in brackets denote millimeters

Directions

1) Lay out your material on the workbench, or on sawhorses, as outlined in the cutting diagram (Fig 1) and layout diagram (Fig 2). Draw out all joints exactly as illustrated, including the letter designations. In period. Ensure to leave a small space between cut lines to allow for the width of the saw blade. Do not cut until you are ready to begin cutting. Always cut on the outside side of the line when cutting across the grain, tape the edges with masking tape or clamp on 1/8" material to avoid splintering. Sand all edges sanding in a motion from the inside of the wood to the cut. For rabbeting pieces B (Fig 3); if you are using a table saw set the saw depth to 1/2". Test the depth of your blade on a scrap piece of wood before making the actual cut. The cut on piece B is on the 80° edge. After the 1/4" rabbet cut on piece B, mark and drill the thirty four 1/4" dia. holes (assuming your shelf support brackets are 1/4" diameter) using a depth gauge (illustration 1) to a depth of 1/2".

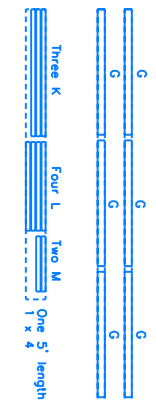
OTHER



One sheet 3/4" plywood

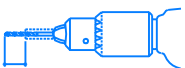


One sheet 3/4" plywood



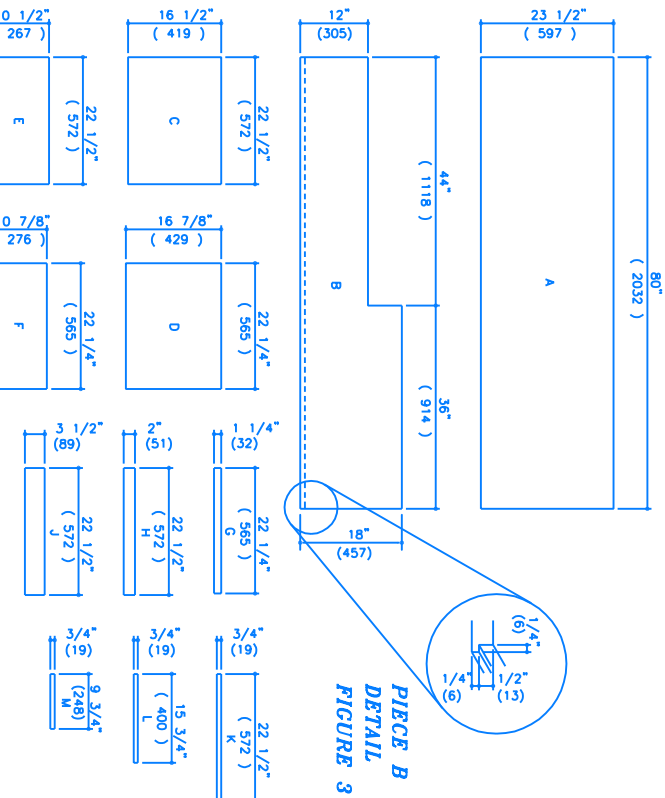
One 2'x8" 1/4" plywood

MATERIAL LAYOUT
FIGURE 1



Make a depth gauge for your drill - by drilling through a 3/4" x 3/4" piece of wood with a 3/8" diameter drill bit. Give desired depth of drill and place over drill bit

DRILL DEPTH GAUGE ILLUSTRATION 1



PIECE B DETAIL FIGURE 3

CUTTING DIAGRAM FIGURE 2



SHELF SUPPORT BRACKETS



MAIL GLIDE LEVELLER

DELUXE STEREO STAND - Project #303

MATERIALS LIST

One 2'x8" sheet 1/4" Plywood, good both sides
 Two 4'x8" sheets 3/4" Plywood, good both sides
 Two 6" doorstops (1 1/4" x 3/8")
 One 6" 1x4 (3/4" x 3 1/2")
 24" edgetape
 Twelve shelf support brackets
 Approx. 1 lb. 1 1/4" finishing nails

MATERIALS LIST

Approx. 1/2 lb. 3/4" finishing nails
 Approx. twenty five 1 1/4" #8 flathead screws
 Stain & varnish, or oil
 Sandpaper
 Four glides or levelers