

Excel 2003 Advanced

Stephen Moffat, The Mouse Training Company



Excel 2003 Advanced

Stephen Moffat, The Mouse Training Company

Excel 2003 Advanced

Excel 2003 Advanced

© 2015 Stephen Moffat, The Mouse Training Company & bookboon.com

ISBN 978-87-403-0050-5

Contents

	Introduction	6
1	Using advanced Worksheet functions	8
1.1	Names	8
1.2	Using Names	12
1.3	Conditional & Logical Functions	16
1.4	Value if True / False	18
1.5	Solver	36
2	Views, Scenarios & Reports	44
2.1	Views & Scenarios	44
3	Using Excel to Manage Lists	58
3.1	Excel Lists	58
3.2	Sorting Data	59
3.3	Adding subtotals to a list	63
3.4	Filtering a List	66
3.5	Advanced Filtering	75

3.6	Copying filtered data	81
3.7	List Statistics	83
3.8	Pivot Tables	86
4	Charts	94
4.1	Introduction to Charting	94
4.2	ChartWizard	96
4.3	Data Layout	98
4.4	Chart Toolbar	101
4.5	Chart Types	101
4.6	Font	107
4.7	Manipulating Chart Data	120
5	Templates	132
5.1	Introduction to templates	132
6	Auditing	136
6.1	Auditing features	136
6.2	Precedents and Dependants	136
6.3	Comments	138

Introduction

Excel '2003 is a powerful spreadsheet application that allows users to produce tables containing calculations and graphs. These can range from simple formulae through to complex functions and mathematical models.

How to use this guide

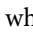
This manual should be used as a point of reference following attendance of the advanced level Excel '2003 training course. It covers all the topics taught and aims to act as a support aid for any tasks carried out by the user after the course.

The manual is divided into sections, each section covering an aspect of the introductory course. The table of contents lists the page numbers of each section and the table of figures indicates the pages containing tables and diagrams.

Objectives

Sections begin with a list of objectives each with its own check box so that you can mark off those topics that you are familiar with following the training.

Instructions

Those who have already used a spreadsheet before may not need to read explanations on what each command does, but would rather skip straight to the instructions to find out how to do it. Look out for the hand icon  which precedes a list of instructions.

Appendices

The Appendices list the toolbars mentioned within the manual with a breakdown of their functions and tables of shortcut keys.

Keyboard

Keys are referred to throughout the manual in the following way:

[ENTER] – denotes the return or enter key, [DELETE] – denotes the Delete key and so on.

Where a command requires two keys to be pressed, the manual displays this as follows:

[CTRL][P] – this means press the letter “p” while holding down the Control key.

Commands

When a command is referred to in the manual, the following distinctions have been made:

When menu commands are referred to, the manual will refer you to the menu bar – E.g. “Choose File from the menu bar and then Print”.

When dialog box options are referred to, the following style has been used for the text – “In the Page Range section of the Print dialog, click the Current Page option”

Dialog box buttons are shaded and boxed – “Click OK to close the Print dialog and launch the print.”

Notes

Within each section, any items that need further explanation or extra attention devoted to them are denoted by shading. For example:

“Excel will not let you close a document that you haven’t already saved changes to without prompting you to save.”

Tips

At the end of each section there is a page for you to make notes on and a “Useful Information” heading where you will find tips and tricks relating to the topics described within the section.

1 Using advanced Worksheet functions

Objectives

By the end of this section you will be able to:

- Create and use names in workbooks
- Understand and use conditional formulae
- Set up lookup tables and use LOOKUP functions
- Use the Goal Seek
- Use the Solver

1.1 Names

When entering formulae or referring to any area on the spreadsheet, it is usual to refer to a “range”. For example, B6 is a range reference; B6:B10 is also a range reference. A problem with this sort of reference is that it is not always easy to remember what cells to reference. It may be necessary to write down the range, or select it, which often means wasting time scrolling around the spreadsheet. Instead, Excel offers the chance to name ranges on the spreadsheet, and to use these names to select cells, refer to them in formulae or use them in Database, Chart or Macro commands.

Defining names

There are a number of ways to set up names on a spreadsheet. A common way is to use the Insert, Name, Define menu. In the example, there is a range of revenue figures that could be named “REVENUE”;

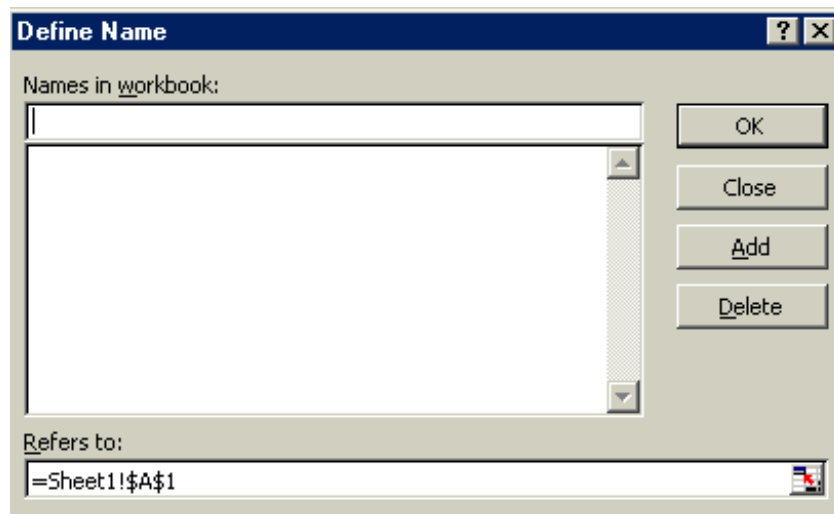
	A	B	C
1			
2			
3		3455	
4		6547	
5		2241	
6		5546	
7		43526	
8			

To name cells:

Mouse

1. Select the cells you wish to name.

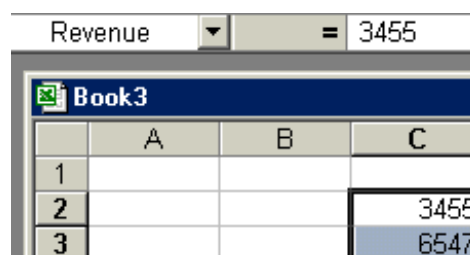
2. Choose Insert, Name, Define. The following dialog box appears;



3. The cursor flashes in the Names in workbook box, and below, in the Refers to box, the range reference appears (notice that the range is absolute).
4. To name the cells, simply type a name in the Names in workbook box and choose OK.



In the example, these cells would be called REVENUE. From now on, any reference to the range C3:C6 can be made with the name REVENUE. Notice that the name box, on the left-hand side of the formula bar now displays the name REVENUE. It will do so whenever cells C3:C6 are selected;



Defining Names Automatically

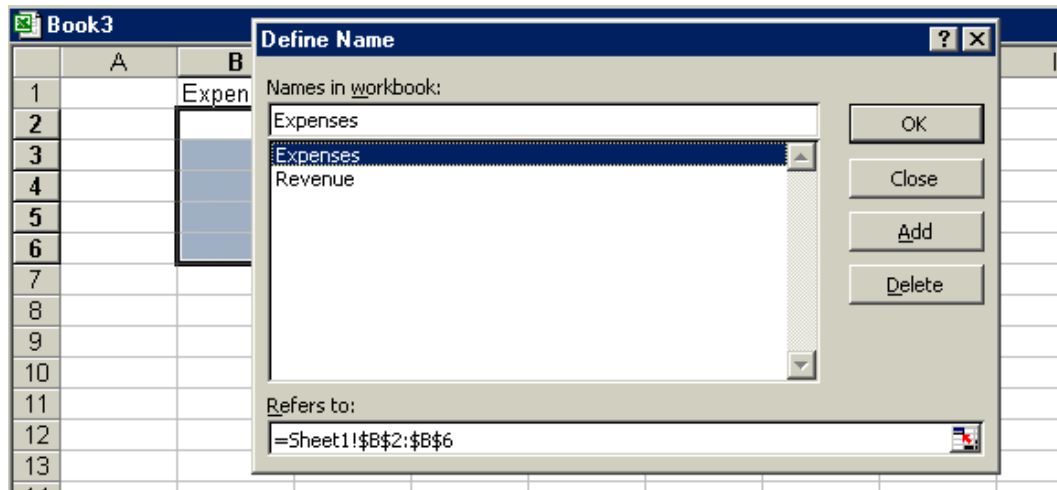
Alternatively, cells can be named using text already on the spreadsheet. For instance, in a spreadsheet, a column heading may have already been entered in cell C1 called EXPENSES. This text can be used to name the cells below.

To define a name automatically:

Mouse

1. Select cells C2:C6 and choose Insert, Name, Define.

The dialog box will automatically suggest the name EXPENSES because it is entered in the cell above the selected cells;

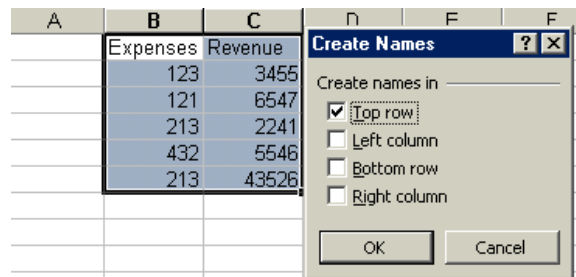


- Choose OK and, again, the name appears in the Name box on the formula bar.



Creating Names

If appropriate names are already on the spreadsheet, Insert, Name, Create can be used as an alternative to Define Name. This command is particularly useful for creating several names at once;



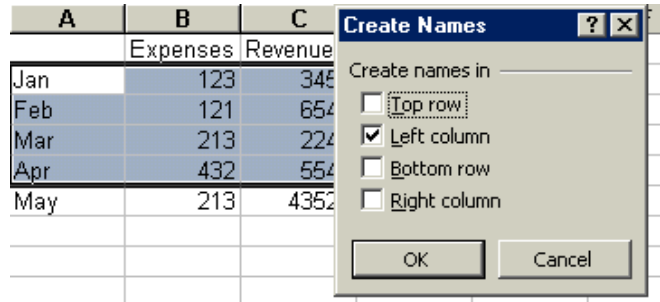
The above spreadsheet contains column headings to denote each month's figures. All these figures could be named by the appropriate month using Insert, Name, Create. This option requires not just the data to be selected, but the cells containing the names as well.

To create names:

Mouse

- Select cells B5:G8, and choose Insert, Name, Create. Excel will automatically generate names in the top row of the selection, in other words cells B6:B8 will be named JAN, C6:C8 FEB etc.
- To prove that these names have been created, choose Insert, Name, Define, and the new names should be displayed.

The Create Names command can often lead to names intersecting each other. For example, you may also want to name the rows of figures in the spreadsheet by their respective countries;



Now the cells containing figures may form part of either the month name or the country name. For instance, cell C6 is part of the range FEB, but also part of Britain. This cell can actually be referred to using both names (in any order, separated by a space). Excel knows that the name “FEB Britain” (or “Britain FEB”) refers to the intersection point of those two ranges, i.e. cell C6. These intersecting names can be used in formulae to refer to specific cells (see later).

1.2 Using Names

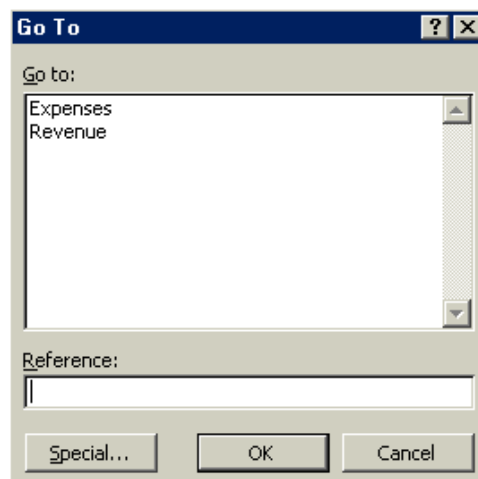
Goto

The GOTO feature can be used to go to a specific cell address on the spreadsheet. It can also be used in conjunction with names.

To goto a name:

Mouse

1. Choose Edit, Go To



Or

Keyboard

Press [F5]. The following dialog box appears;

2. Click on the name required, then choose OK.

Not only does the cell pointer move to the correct range, but it also selects it. This can be very useful for checking that ranges have been defined correctly, and also for listing all the names on the spreadsheet.

You can also go to a specific cell that has been used in two range names. The previous example mentioned cell C6, the intersection of the FEB and Britain ranges.

To move to a cell that belongs to two ranges:

Keyboard

1. Press [F5] and type the first range name in the Reference box, then type a space and the second range name.
2. Click OK. The pointer immediately jumps to the correct cell.

Names in Formulae

Names can be used in any simple formula, as well as any of Excel's built-in functions. Instead of typing cell references or selecting cells, simply type the name or paste the name into the formula.

=SUM(REVENUE)
=AVERAGE(INTEREST)

An intersecting name can be used, e.g.;

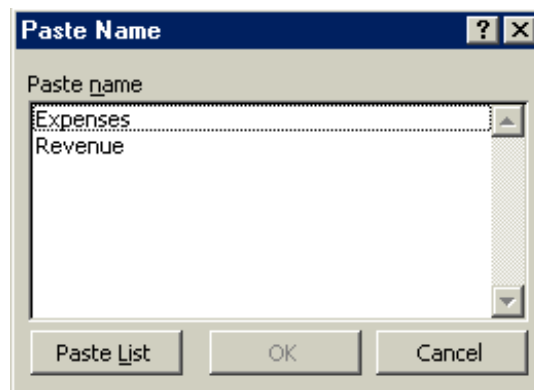
=France APR
=France APR + Germany MAY

To avoid typing a name, choose from a list and paste in the required name.

To paste a name into a formula:

Mouse

1. Choose Insert, Name, Paste.



Or

Keyboard

Press [F3]

2. Click on the required name and choose OK



Applying Names

When a cell has already been referred to in a formula, and is then named, the name will not automatically appear in the formula. Similarly, if a cell is referred to by its address rather than its name, the name will not automatically appear. To replace all references with names, the names must be applied.

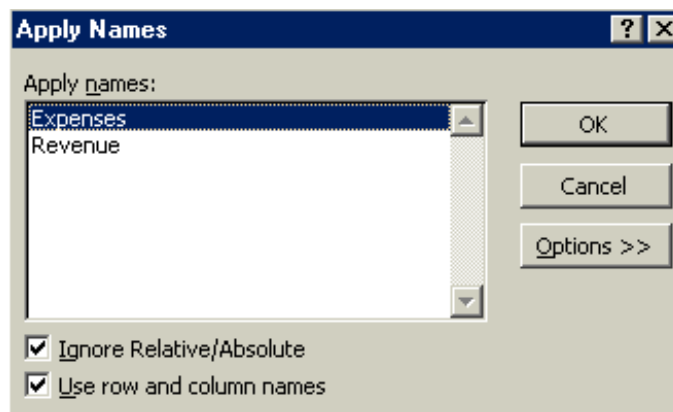
Suppose a formula is written to sum cells B6:G6;
=SUM(B22:G22)

The formula makes no reference to the range “Britain”, even though this range has been named.

To replace cell references with range names:

Mouse

1. Choose Insert, Name, Apply. The following dialog box appears;



2. Click on the name you want, and choose OK.



The Apply Names command works throughout the spreadsheet, so wherever the cell reference to the name you chose appeared, the name is now in its place.

1.3 Conditional & Logical Functions

Excel has a number of logical functions which allow you to set various “conditions” and have data respond to them. For example, you may only want a certain calculation performed or piece of text displayed if certain conditions are met. The functions used to produce this type of analysis are found in the Insert, Function menu, under the heading LOGICAL.

IF Statements

The IF function is used to analyse data, test whether or not it meets certain conditions and then act upon its decision. The formula can be entered either by typing it or by pasting it from the Formula, Paste Function box. Typically, the IF statement is accompanied by three arguments enclosed in one set of parentheses; the condition to be met (*logical_test*); the action to be performed if that condition is true (*value_if_true*); the action to be performed if false (*value_if_false*). Each of these is separated by a comma, as shown;

```
=IF( logical_test , value_if_true , value_if_false)
```

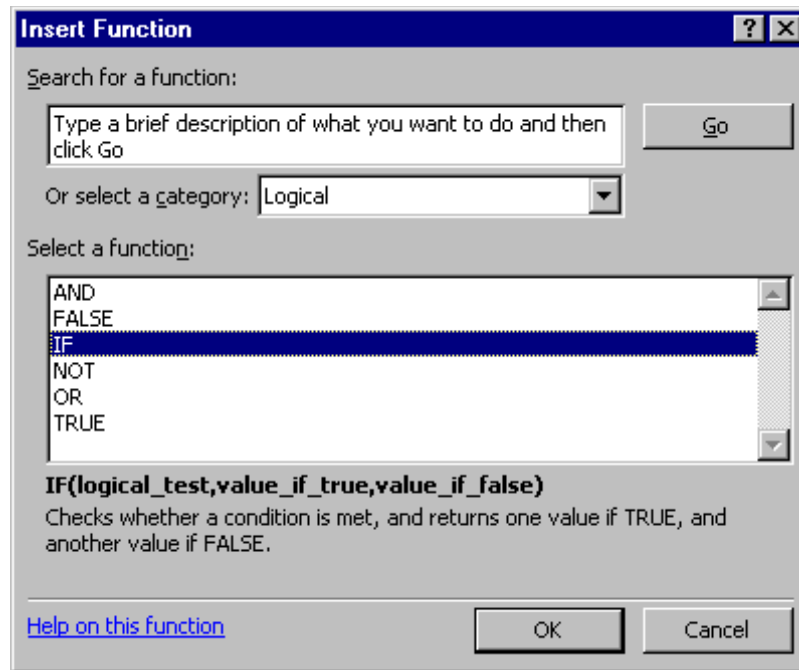
To view IF function syntax:

Mouse

1. Click the Insert, Function menu.
2. From the resulting dialog box, click on the LOGICAL category on the left and the IF function on the right.
3. The three arguments can be seen at the bottom of the screen;

Logical Test

This part of the IF statement is the “condition”, or test. You may want to test to see if a cell is a certain value, or to compare two cells. In these cases, symbols called LOGICAL OPERATORS are useful;



Therefore, a typical logical test might be $B1 > B2$, testing whether or not the value contained in cell B1 of the spreadsheet is greater than the value in cell B2. Names can also be included in the logical test, so if cells B1 and B2 were respectively named SALES and TARGET, the logical test would read $SALES > TARGET$. Another type of logical test could include text strings. If you want to check a cell to see if it contains text, that text string must be included in quotation marks. For example, cell C5 could be tested for the word YES as follows; $C5="YES"$.

It should be noted that Excel’s logic is, at times, brutally precise. In the above example, the logical test is that sales should be greater than target. If sales are equal to target, the IF statement will return the false value. To make the logical test more flexible, it would be advisable to use the operator > = to indicate “meeting or exceeding”.

1.4 Value if True / False

Provided that you remember that TRUE value always precedes FALSE value, these two values can be almost anything. If desired, a simple number could be returned, a calculation performed, or even a piece of text entered. Also, the type of data entered can vary depending on whether it is a true or false result. You may want a calculation if the logical test is true, but a message displayed if false. (Remember that text to be included in functions should be enclosed in quotes).

Taking the same logical test mentioned above, if the sales figure meets or exceeds the target, a BONUS is calculated (e.g. 2% of sales). If not, no bonus is calculated so a value of zero is returned. The IF statement in column D of the example reads as follows;

```
=IF(B2>=C2,B2*2%,0)
```

	D2		=IF(B2>=C2,B2*2%,0)		
	A	B	C	D	E
1	Name	Sales	Target	Bonus	
2	Bill	580	640	0	
3	Karen	1200	1000	24	
4	Ted	710	700	14.2	
5					

You may, alternatively, want to see a message saying “NO BONUS”. In this case, the true value will remain the same and the false value will be the text string “NO BONUS”;

```
=IF(B2>=C2,B2*2%,"NO BONUS")
```

A particularly common use of IF statements is to produce “ratings” or “comments” on figures in a spreadsheet. For this, both the true and false values are text strings. For example, if a sales figure exceeds a certain amount, a rating of “GOOD” is returned, otherwise the rating is “POOR”;

```
=IF(B2>1000,"GOOD","POOR")
```

	D2		=IF(B2>1000,"Good","Poor")		
	A	B	C	D	E
1	Name	Sales	Target	Rating	
2	Bill	580	640	Poor	
3	Karen	1200	1000	Good	
4	Ted	710	700	Poor	
5					
6					

Nested IF

When you need to have more than one condition and more than two possible outcomes, a NESTED IF is required. This is based on the same principle as a normal IF statement, but involves “nesting” a secondary formula inside the main one. The secondary IF forms the FALSE part of the main statement, as follows;

=IF(1st logic test , 1st true value , IF(2nd logic test , 2nd true value , false value))

Only if both logic tests are found to be false will the false value be returned. Notice that there are two sets of parentheses, as there are two separate IF statements. This process can be enlarged to include more conditions and more eventualities - up to seven IFs can be nested within the main statement. However, care must be taken to ensure that the correct number of parentheses are added.

In the example, sales staff could now receive one of three possible ratings ;

=IF(B2>1000,"GOOD",IF(B2<600,"POOR","AVERAGE"))

To make the above IF statement more flexible, the logical tests could be amended to measure sales against cell references instead of figures. In the example, column E has been used to hold the upper and lower sales thresholds.

=IF(B2>\$E\$2,"GOOD",IF(B2<\$E\$3,"POOR","AVERAGE"))

(If the IF statement is to be copied later, this cell reference should be absolute).

	D2		=IF(B2>\$E\$2,"Good",IF(B2<\$E\$3,"Poor","Average"))				
	A	B	C	D	E	F	G
1	Name	Sales	Target	Ratings	Thresholds		
2	Bill	580	640	Poor	1000		
3	Karen	1200	1000	Good	600		
4	Ted	710	700	Average			
5							
6							
7							

Statistical If Statements

A very useful technique is to display text or perform calculations only if a cell is the maximum or minimum of a range. In this case the logical test will contain a nested statistical function (such as MAX or MIN). If, for example, a person's sales cell is the maximum in the sales column, a message stating "Top Performer" could appear next to his or her name. If the logical test is false, a blank message could appear by simply including an empty set of quotation marks. When typing the logical test, it should be understood that there are two types of cell referencing going on. The first is a reference to one person's figure, and is therefore relative. The second reference represents the RANGE of everyone's figures, and should therefore be absolute.

=IF(relative cell = MAX(absolute range) , "Top Performer" , "")

	B2		=IF(C2=MAX(\$C\$2:\$C\$4),"Top Performer","")		
	A	B	C	D	E
1	Name	Message	Sales		
2	Bill		580		
3	Karen	Top Performer	1200		
4	Ted		710		
5					

In this example the IF statement for cell B2 will read;

=IF(C2=MAX(\$C\$2:\$C\$4),"Top Performer","")

When this is filled down through cells B3 and B4, the first reference to the individual's sales figure changes, but the reference to all three sales figures (\$C\$2:\$C\$4) should remain constant. By doing this, you ensure that the IF statement is always checking to see if the individual's figure is the biggest out of the three.

A further possibility is to nest another IF statement to display a message if a value is the minimum of a range. Beware of syntax here - the formula could become quite unwieldy!

AND, OR, NOT

Rather than create large and unwieldy formulae involving multiple IF statements, the AND, OR and NOT functions can be used to group logical tests or "conditions" together. These three functions can be used on their own, but in that case they will only return the values "TRUE" or "FALSE". As these two values are not particularly meaningful on a spreadsheet, it is much more useful to combine the AND, OR and NOT functions within an IF statement. This way, you can ask for calculations to be performed or other text messages to appear as a result.

And

This function is a logical test to see if all conditions are true. If this is the case, the value "TRUE" is returned. If any of the arguments in the AND statement are found to be false, the whole statement produces the value "FALSE". This function is particularly useful as a check to make sure that all conditions you set are met.

Arguments are entered in the AND statement in parentheses, separated by commas, and there is a maximum of 30 arguments to one AND statement. The following example checks that two cells, B1 and B2, are both greater than 100.

=AND(B1>100,B2>100)

If either one of these two cells contains a value less than a hundred, the result of the AND statement is "FALSE". This can now be wrapped inside an IF function to produce a more meaningful result. You may want to add the two figures together if they are over 100, or display a message indicating that they are not high enough.

=IF(AND(B1>100,B2>100),B1+B2,"Figures not high enough")

	B3		=IF(AND(B1>100,B2>100),B1+B2,"Figures not high enough")					
	A	B	C	D	E	F	G	H
1		50						
2		30						
3		Figures not high enough						
4								

Another application of ANDs is to check that a number is between certain limits. The following example checks that a number is between 50 and 100. If it is, the value is entered. If not, a message is displayed;

=IF(AND(B1>50,B1<100),B1,"Number is out of range")

Or

This function is a logical test to see if one or more conditions are true. If this is the case, the value "TRUE" is returned. If just one of the arguments in the OR statement is found to be true, the whole statement produces the value "TRUE". Only when all arguments are false will the value "FALSE" be returned. This function is particularly useful as a check to make sure that at least one of the conditions you set is met.

=IF(OR(B1>100,B2>100),B1+B2,"Figures not high enough")

In the above formula, only one of the numbers in cells B1 and B2 has to be over 100 in order for them to be added together. The message only appears if neither figure is high enough.

	A	B	C	D	E	F	G	H
1		50						
2		30						
3		Figures not high enough						
4								

Not

NOT checks to see if the argument is false. If so, the value “TRUE” is returned. It is best to use NOT as a “provided this is not the case” function. In other words, so long as the argument is false, the overall statement is true. In the example, the cell contents of B1 is returned unless the number 13 is encountered. If B1 is found to contain 13, the message “Unlucky!” is displayed;

```
=IF(NOT(B1=13),B1,"Unlucky!")
```

The NOT function can only contain one argument. If it is necessary to check that more than one argument is false, the OR function should be used and the true and false values of the IF statement reversed. Suppose, for example, a check is done against the numbers 13 and 666;

```
=IF(OR(B1=13,B1=666),"Unlucky!",B1)
```

	B3		=IF(OR(B1=13,B1=666),"Unlucky!",B1)			
	A	B	C	D	E	F
1		13				
2		99				
3		Unlucky!				
4						

Lookup Functions

As already mentioned, Excel can produce varying results in a cell, depending on conditions set by you. For example, if numbers are above or below certain limits, different calculations will be performed and text messages displayed. The usual method for constructing this sort of analysis is using the IF function. However, as already demonstrated, this can become large and unwieldy when you want multiple conditions and many possible outcomes. To begin with, Excel can only nest seven IF clauses in a main IF statement, whereas you may want more than eight logical tests or “scenarios”. To achieve this, Excel provides some LOOKUP functions. These functions allow you to create formulae which examine large amounts of data and find information which matches or approximates to certain conditions. They are simpler to construct than nested IFs and can produce many more varied results.

LOOKUP

Before you actually start to use the various LOOKUP functions, it is worth learning the terms that you will come across, what they mean and the syntax of the function arguments.

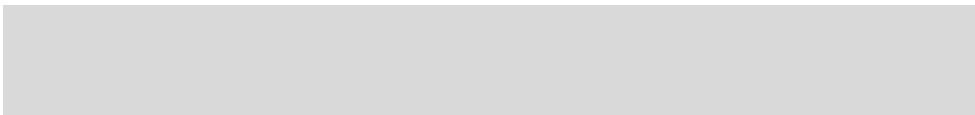
Vector Lookup

A vector is a series of data that only occupies one row or column. LOOKUP will look through this row or column to find a specific value. When the value is found, a corresponding “result” in the adjacent row or column is returned. For example, column D of a spreadsheet may contain figures, and the adjacent column E contain corresponding text. LOOKUP will search for the requested figure in column D and return the corresponding text from column E.

The syntax for LOOKUP is as follows;

=LOOKUP(lookup_value , lookup_vector , result_vector)

The lookup_value represents the number or text entry to look for; the lookup_vector is the area in which to search for the lookup_value; the result_vector is the adjacent row or column where the corresponding value or text is to be found.



	B14		=LOOKUP(B13,D3:D11,E3:E11)			
	A	B	C	D	E	F
1						
2	What Car ?				Car	
3				£10,000	Reliant	
4				£15,000	Metro	
5			Salary	£20,000	Golf	
6				£25,000	Sierra	
7				£30,000	Sapphire	
8				£33,000	Granada	
9				£35,000	Scorpio	
10				£40,000	Mercedes	
11				£50,000	Jaguar	
12						
13	Salary	40000				
14	Car	Mercedes				
15						

In the diagram, column D contains varying salaries, against which there is a company car in column E which corresponds to each salary. For example, a £20030 salary gets a Golf, a £35000 salary gets a Scorpio. A LOOKUP formula can be used to return whatever car is appropriate to a salary figure that is entered. In this case, the lookup_value is the cell where the salary is entered (B13), the lookup_vector is the salary column (D3:D11), and the result_vector is the car column (E3:E11). Hence the formula;

=LOOKUP(B13,D3:D11,E3:E11)

Typing 40000 in cell B13 will set the lookup_value. LOOKUP will search through the lookup_vector to find the matching salary, and return the appropriate car from the result_vector, which in this case is Mercedes.

Alternatively, the formula could be simplified and cell references avoided by using Formula, Define Name to give appropriate range names. Call B13 Salary, D3:D11 Salaries and E3:E11 Cars. The LOOKUP formula could then be simplified to;

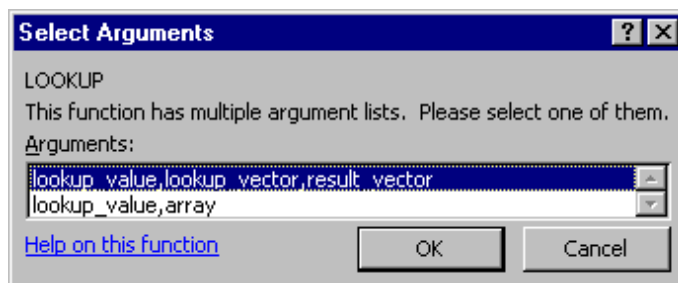
=LOOKUP(Salary,Salaries,Cars)

One of the advantages of the LOOKUP function is that if the exact lookup_value is not found, it will approximate to the nearest figure below the requested value. For instance, if a user enters a Salary of 23000, there is no figure in the Salaries range which matches this. However, the nearest salary below 23000 is 20030, so the corresponding car is returned, which is a Golf. This technique is very useful when the lookup_vector indicates grades or “bands”. In this case, anyone in the salary “band” between 20030 and 25000 gets a Golf. Only when their salary meets or exceeds 25000 do they get a Sierra.

	A	B	C	D	E	F
1						
2	What Car ?				<i>Car</i>	
3				£10,000	Reliant	
4				£15,000	Metro	
5			<i>Salary</i>	£20,000	Golf	
6				£25,000	Sierra	
7				£30,000	Sapphire	
8				£33,000	Granada	
9				£35,000	Scorpio	
10				£40,000	Mercedes	
11				£50,000	Jaguar	
12						
13	Salary	23000				
14	Car	Golf				
15						

There may be occasions where the lookup_value is below the lowest value in the vector. In this case the #N/A message is displayed.

To insert a lookup function:



Mouse

1. Use the Insert, Function menu and click on the LOOKUP & REFERENCE category, then on the LOOKUP function on the right.
When OK is chosen, another dialog box appears displaying the two versions of LOOKUP. There are two syntax forms; the first is the “array” and the second the “vector”.

HLOOKUP

The horizontal LOOKUP function (HLOOKUP) can be used not just on a “vector” (single column or row of data), but on an “array” (multiple rows and columns). HLOOKUP searches for a specified value horizontally along the top row of an array. When the value is found, HLOOKUP searches down to a specified row and enters the value of the cell. This is useful when data is arranged in a large tabular format, and it would be difficult for you to read across columns and then down to the appropriate cell. HLOOKUP will do this automatically.

The syntax for HLOOKUP is;

```
=HLOOKUP( lookup_value , table_array , row_index_number)
```

The `lookup_value` is, as before, a number, text string or cell reference which is the value to be found along the top row of the data; the `table_array` is the cell references (or range name) of the entire table of data; the `row_index_number` represents the row from which the result is required. This must be a number, e.g. 4 instructs HLOOKUP to extract a value from row 4 of the `table_array`.

It is important to remember that data in the array must be in ascending order. With a simple LOOKUP function, only one column or row of data, referred to as a vector, is required. HLOOKUP uses an array (i.e. more than one column or row of data). Therefore, as HLOOKUP searches horizontally (i.e. across the array), data in the first row must be in ascending order, i.e. numbers from lowest to highest, text from A to Z. As with LOOKUP, if this rule is ignored, HLOOKUP will return the wrong value.

As an example, a user may have a spreadsheet which displays various different rates of interest for a range of amounts over different time periods;

	B51		=HLOOKUP(A51,C43:H48,3)						
	A	B	C	D	E	F	G	H	I
40									
41									
42	Loan Rates		<i>Amount</i>						
43				£20,000	£25,000	£30,000	£40,000	£60,000	
44		<i>Period</i>	10	12.50%	14.10%	14.90%	15.50%	16.30%	
45			15	14.00%	14.30%	15.00%	16.00%	17.50%	
46			20	16.50%	17.00%	17.00%	17.60%	19.00%	
47			25	17.20%	17.50%	18.00%	18.50%	19.30%	
48			30	17.90%	18.00%	18.60%	19.00%	20.20%	
49									
50	Amount	Rate							
51	30000	15.00%							
52									

Whatever the amount a customer wants to borrow, he may pay up to five different rates of interest depending on whether the loan is over 10, 15 or more years. The HLOOKUP function will find a specific amount, then move down the array to find the appropriate interest rate for the required time period.

Designate cell A51 as the cell to hold the amount, i.e. the lookup_value; cells C43:H48 are the table_array; the row_index_number will be 2 if a customer wants the loan over 10 years, 3 if he wants the loan over 15 years, and so on. Cell B51 holds this formula;

```
=HLOOKUP(A51,C43:H48,3)
```

The above formula looks along the top row of the array for the value in cell A51 (30000). It then moves down to row 3 and returns the value 15.00%, which is the correct interest rate for a £30000 loan over 15 years. (Range names could be used here to simplify the formula).

As with the LOOKUP function, the advantage of HLOOKUP is that it does not necessarily have to find the exact lookup_value. If, for example, you wanted to find out what interest rate is applicable to a £28000 loan, the figure 28000 can be entered in the lookup_value cell (A51) and the rate 14.30% appears. As before, Excel has looked for the value in the array closest to, but lower than, the lookup_value.

VLOOKUP

The VLOOKUP function works on the same principle as HLOOKUP, but instead of searching horizontally, VLOOKUP searches vertically. VLOOKUP searches for a specified value vertically down the first column of an array. When the value is found, VLOOKUP searches across to a specified column and enters the value of the cell. The syntax for the VLOOKUP function follows the same pattern as HLOOKUP, except that instead of specifying a row index number, you would specify a column index number to instruct VLOOKUP to move across to a specific column in the array where the required value is to be found.

```
=VLOOKUP(lookup_value , table_array , col_index_number )
```

In the case of VLOOKUP, data in the first column of the array should be in ascending order, as VLOOKUP searches down this column for the lookup_value.

In the same spreadsheet as before, a VLOOKUP formula could be used to search for a specific time period, then return the appropriate rate for a fixed amount. In the following example, a time period is entered in cell A54 and in B54 the VLOOKUP formula is contained;

	B54		=VLOOKUP(A54,C43:H48,5)						
	A	B	C	D	E	F	G	H	
40									
41									
42	Loan Rates		<i>Amount</i>						
43				£20,000	£25,000	£30,000	£40,000	£60,000	
44		<i>Period</i>	10	12.50%	14.10%	14.90%	15.50%	16.30%	
45			15	14.00%	14.30%	15.00%	16.00%	17.50%	
46			20	16.50%	17.00%	17.00%	17.60%	19.00%	
47			25	17.20%	17.50%	18.00%	18.50%	19.30%	
48			30	17.90%	18.00%	18.60%	19.00%	20.20%	
49									
50	Amount	Rate							
51	30000	15.00%							
52									
53	Period	Rate							
54	17	16.00%							
55									

Cell B54 holds this formula;

=VLOOKUP(A54,C43:H48,5)

The cell A54 is the lookup_value (time period), the table_array is as before, and for this example rates are looked up for a loan of £40000, hence the column_index_number 5. By changing the value of cell A54, the appropriate rate for that time period is returned. Where the specific lookup_value is not found, VLOOKUP works in the same way as HLOOKUP. In other words, the nearest value in the array that is less than the lookup_value will be returned. So, a £40000 loan over 17 years would return an interest rate of 16.00%.

NESTED LOOKUPS

One of the limitations of the horizontal and vertical LOOKUP functions is that for every lookup_value changed, the column or row index number stays constant. Using our example, the HLOOKUP will search for any amount, but always for the same time period. Conversely, the VLOOKUP will search for any time period, but always for the same amount. In both cases, if you want to alter the time period and the amount the formula must be edited to alter the column or row index number.

There is, however, a technique whereby one LOOKUP function is “nested” within another. This looks up one value, which will then be used in a second LOOKUP formula as a column or row index number. Using this technique allows you to, say, enter a time period and an amount and see the correct interest rate.

Because nested LOOKUPS have more than one lookup_value, more than one array is needed. This second array should consist of the column or row numbers to be used in the LOOKUP formula. The example shows our main interest rates spreadsheet, with an additional two columns of data;

	J52		=HLOOKUP(J50,C43:H48,LOOKUP(K50,J43:J47,K43:K47))						
	C	D	E	F	G	H	I	J	K
40									
41									
42		<i>Amount</i>							
43		£20,000	£25,000	£30,000	£40,000	£60,000		10	2
44	10	12.50%	14.10%	14.90%	15.50%	16.30%		15	3
45	15	14.00%	14.30%	15.00%	16.00%	17.50%		20	4
46	20	16.50%	17.00%	17.00%	17.60%	19.00%		25	5
47	25	17.20%	17.50%	18.00%	18.50%	19.30%		30	6
48	30	17.90%	18.00%	18.60%	19.00%	20.20%			
49								Amount	Period
50								40000	25
51									
52								18.50%	
53									

Column J contains all the same time periods as column C, but alongside this are numbers 2 to 6, indicating the row_index_number to be returned for the appropriate time period. To look up this value, use a simple vector LOOKUP formula, where K50 is the required time period, J43:J47 is the lookup_vector and K43:K47 is the result_vector;

LOOKUP(K50,J43:J47,K43:K47)

Notice there is no equals sign, because this formula is not being entered in a cell of its own. The formula will return a value between 2 and 6 which will be used as a row_index_number in a HLOOKUP formula. This HLOOKUP will look in the main interest rate table for an amount typed in by you, and will respond to the row_index_number returned from

the nested LOOKUP formula. The cells J50 and K50 hold the amount and time period to be typed in by you, and the entire nested HLOOKUP, typed in J52, is as follows;

```
=HLOOKUP(J50,C43:H48,LOOKUP(K50,J43:J47,K43:K47))
```

In the example, the time period 25 is vertically looked up in column J and the corresponding value 5 is returned. Also, the amount 40000 is horizontally looked up in the main table, with a row_index_number of 5. The end result is an interest rate of 18.50%. Simply by changing cells J50 and K50, the correct interest rate is always returned for the amount and period typed in.

Goal Seeking and Solving

Excel has a number of ways of altering conditions on the spreadsheet and making formulae produce whatever result is requested. Excel can also forecast what conditions on the spreadsheet would be needed to optimise the result of a formula. For instance, there may be a profits figure that needs to be kept as high as possible, a costs figure that needs to be kept to a minimum, or a budget constraint that has to equal a certain figure exactly. Usually, these figures are formulae that depend on a great many other variables on the spreadsheet. Therefore, you would have to do an awful lot of trial-and-error analysis to obtain the desired result. Excel can, however, perform this analysis very quickly to obtain optimum results. The Goal Seek command can be used to make a formula achieve a certain value by altering just one variable. The Solver can be used for more painstaking analysis where many variables could be adjusted to reach a desired result. The Solver can be used to not only obtain a specific value, but to maximise or minimise the result of a formula (e.g. maximise profits or minimise costs).

GOAL SEEK

The Goal Seek command is used to bring one formula to a specific value. It does this by changing one of the cells that is referenced by the formula. Goal Seek asks for a cell reference that contains a formula (the Set cell). It also asks for a value, which is the figure you want the cell to equal. Finally, Goal Seek asks for a cell to alter in order to take the Set cell to the required value.

In the example spreadsheet, cell B8 contains a formula that sums advertising and payroll costs. Cell B10 contains a profits formula based on the revenue figure, minus the total costs.

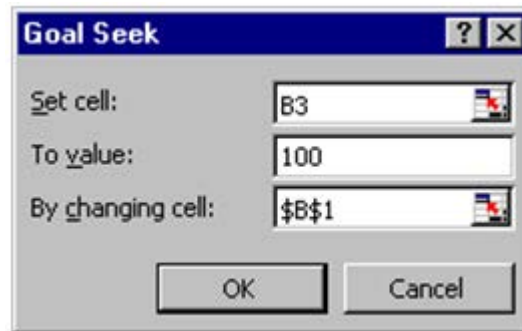
B10		=B3-B8		
	A	B	C	D
2				
3	Revenue	5000		
4				
5	Advert. costs	300		
6	Payroll	1150		
7				
8	Total costs	1450		
9				
10	Profits	3550		
11				

A user may want to see how a profit of 4000 can be achieved by altering payroll costs.

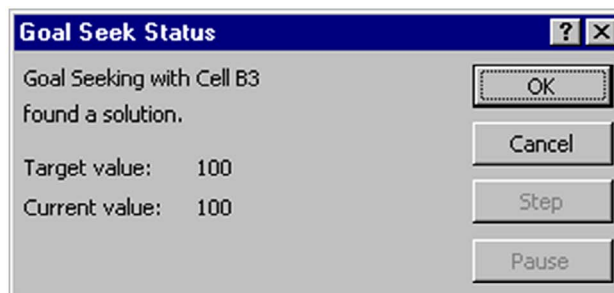
To launch the Goal seeker:

Mouse

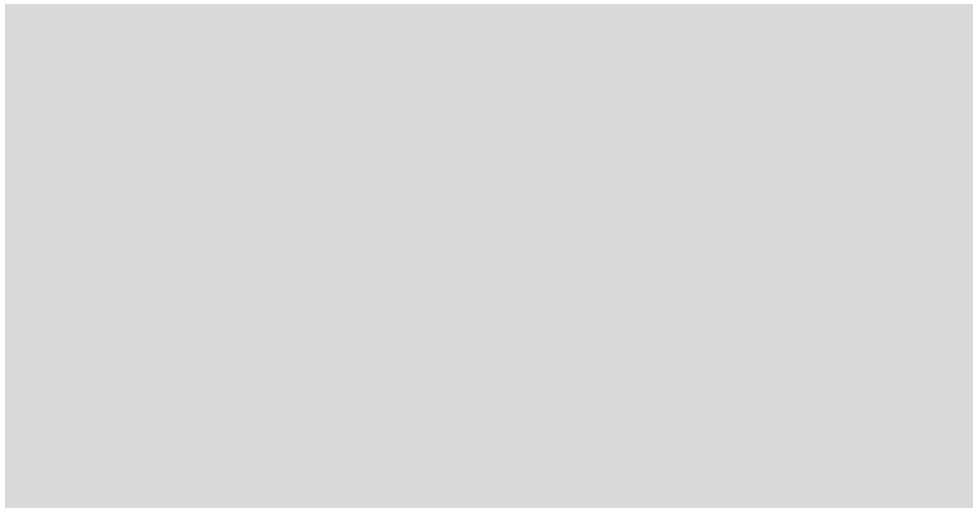
1. Click on the cell whose value you wish to set. (The Set cell must contain a formula).
2. Choose Tools, Goal Seek from the menu, and the following dialog box appears:



3. Now enter the desired value this formula should reach. Click inside the TO VALUE box and type in the value you want your selected formula to equal.
4. Finally, click inside the BY CHANGING CELL box and either type or click on the cell whose value can be changed to achieve the desired result.
5. Click the OK button and the spreadsheet will alter the cell to a value sufficient for the formula to reach your goal. Goal Seek also informs you that the goal was achieved;

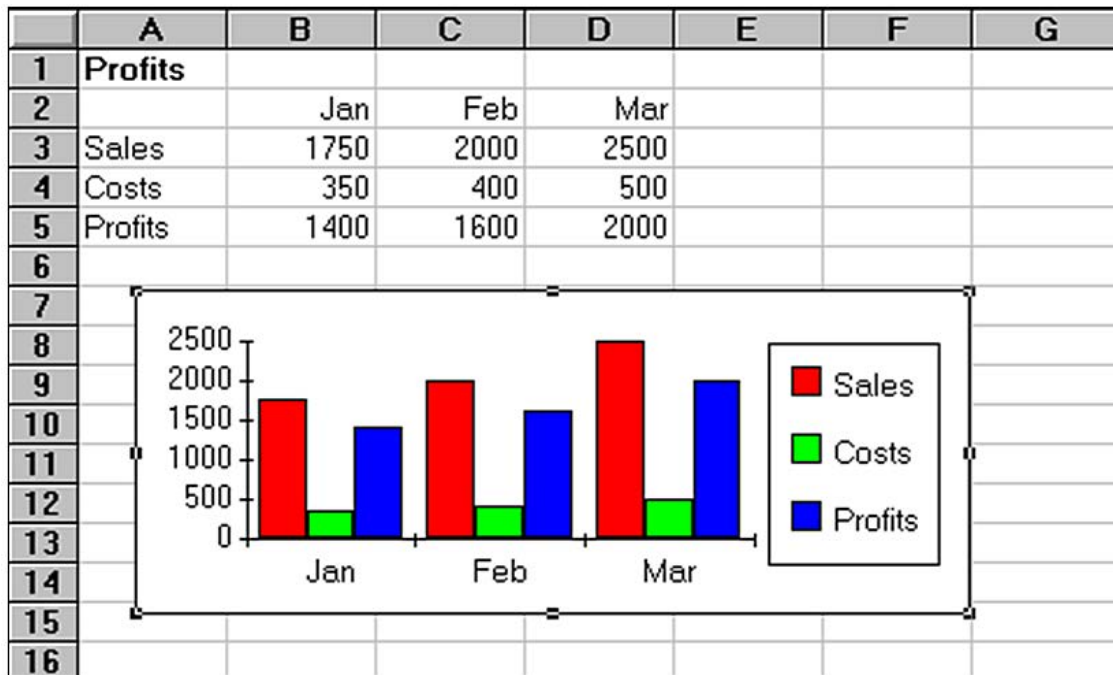


6. You now have the choice of accepting the revised spreadsheet, or returning to the previous values. Click OK to keep the changes, or Cancel to restore previous values.



Goal-Seeking with Charts

Goal Seek can be used in conjunction with Excel's charting facility. Usually, when [Ctrl] is used with the mouse to select chart data, handles appear which permit dragging of the data up or down to a particular value. This then updates the corresponding figure on the spreadsheet. However, if the data that is dragged is the result of a formula, Goal Seek asks which cell to change in order to make the formula equal the required value. The following example shows a spreadsheet and embedded chart:



To use goal seeker with charts:

Mouse

1. Double click to edit the chart, and then [Ctrl] click on the series item you want to change – this could be a column or a plot point depending on the type of graph you have.
2. Use the black handle markers to drag up or down altering the value of the plot point. If the plot point value you are changing is the result of a formula, when the mouse is released, you are returned to the spreadsheet and the Goal Seek dialog box appears.



3. Choose the appropriate cell, and click OK. You are returned to the chart window.

1.5 Solver

For more complex trial-and-error analysis the Excel Solver should be used. Unlike Goal Seek, the Solver can alter a formula not just to produce a set value, but to maximise or minimise the result. More than one changing cell can be specified, so as to increase the number of possibilities, and constraints can be built in to restrict the analysis to operate only under specific conditions.

The basis for using the Solver is usually to alter many figures to produce the optimum result for a single formula. This could mean, for example, altering price figures to maximise profits. It could mean adjusting expenditure to minimise costs, etc. Whatever the case, the variable figures to be adjusted must have an influence, either directly or indirectly, on the overall result, that is to say the changing cells must affect the formula to be optimised. Up to 200 changing cells can be included in the solving process, and up to 100 constraints can be built in to limit the Solver's results.

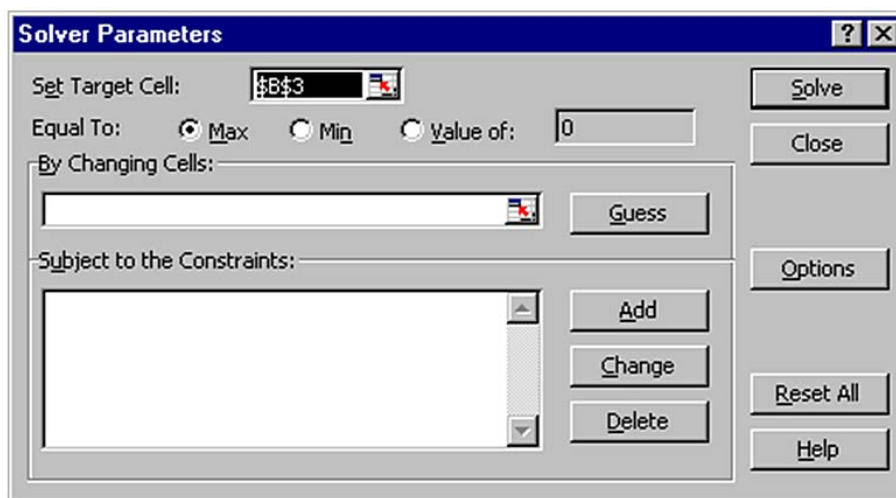
Solver Parameters

The Solver needs quite a lot of information in order for it to be able to come up with a realistic solution. These are the Solver parameters

To set up the Solver:

Mouse

1. Choose Tools, Solver from the menu. A dialog box appears as follows:



2. Decide which cells the Solver should alter in order to produce the Set Cell result. You can either type or click on the appropriate cells, and [Ctrl] click if non-adjacent cell references are required.

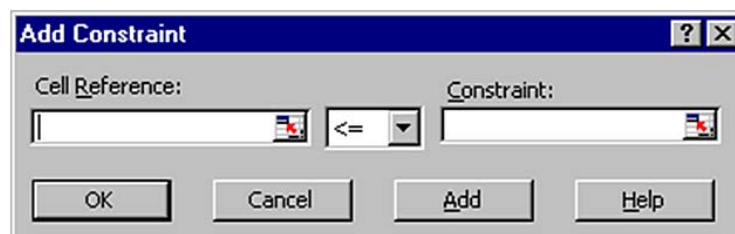


Constraints

Constraints prevent the Solver from coming up with unrealistic solutions.

To build constraints into your Solver parameters:

1. In the Solver dialog, choose Add



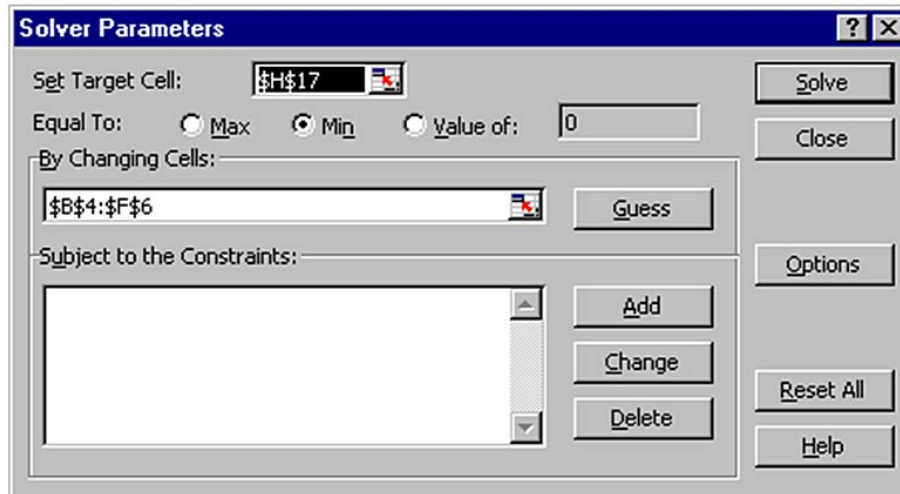
2. This dialog box asks you to choose a cell whose value will be kept within certain limits. It can be any cell or cells on the spreadsheet (simply type the reference or select the range).
3. This cell can be subjected to an upper or lower limit, made to equal a specific value or forced to be a whole number. Drop down the arrow in the centre of the Constraint box to see the list of choices:- To set an upper limit, click on the <= symbol; for a lower limit, >=; the = sign for a specific value and the int option for an integer (whole number).
4. Once the OK button is chosen, the Solver Parameter dialog box re displays and the constraint appears in the window at the bottom. This constraint can be amended using the Change button, or removed using the Delete button.

When maximising or minimising a formula value, it is important to include constraints which set upper or lower limits on the changing values. For instance, when maximising profits by changing sales figures, the Solver could conceivably increase sales to infinity. If the sales figures are not limited by an upper constraint, the Solver will return an error message stating that the cell values do not converge. Similarly, minimising total costs could be achieved by making one of the contributing costs infinitely less than zero. A constraint should be included, therefore, to set a minimum level on these values.

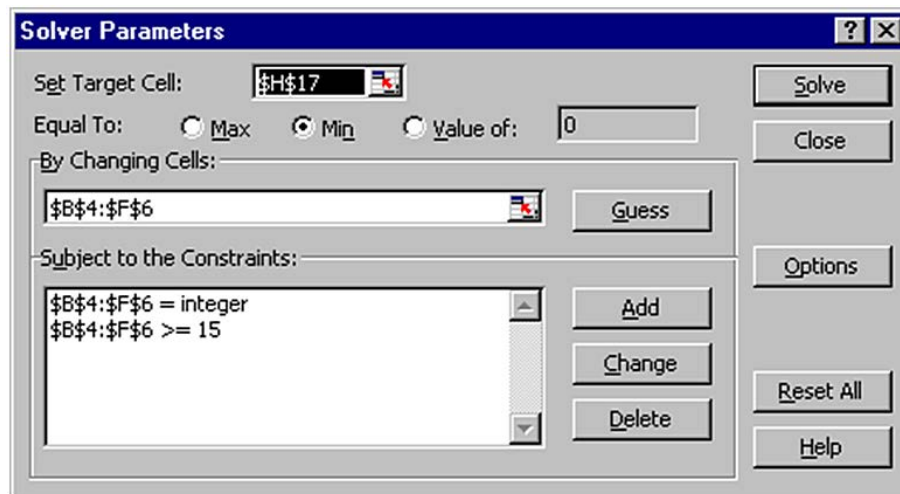
The example here shows the number of cases for five London hospitals, split into three types: Elective, Emergency and Day cases. Below this are the respective costs of each type of case for each hospital, and finally the total costs (number multiplied by price) for each type in each hospital. All these figures are totalled in column H, to arrive at a final total costs figure in cell H17.

	A	B	C	D	E	F	G	H	I
2									
3		BARTS	CHARX	HAMSMTH	MOORFLDS	ST GEORGES			
4	Elective	4	5	5	4	7		25	
5	Emerg	3	2	4	5	3		17	
6	Day	9	8	7	10	6		40	
7		16	15	16	19	16		82	Total Cases
8									
9	Elective	11	9	13	2.4	6		41.4	
10	Emerg	8	8.2	10	5	4		35.2	
11	Day	3	6	14	3	2		28	
12		22	23.2	37	10.4	12		104.6	Total Price
13									
14	Elective	44	45	65	9.6	42		205.6	
15	Emerg	24	16.4	40	25	12		117.4	
16	Day	27	48	98	30	12		215	
17		95	109.4	203	64.6	66		538	Total Cost
18									

Call up the Tools, Solver command from the menu. The Set Cell in this case will be H17, the total costs cell. It can be assumed that the costs of cases cannot be changed, only the number in each hospital, therefore the changing cells will be B4:F6:



The problem is that, if Solve is chosen now, the number of cases could reduce to infinitely below zero and produce an error message. Fortunately, constraints can be built in to force each hospital to have a minimum number of cases, and for there to be a total number of cases overall. Choose the Add option to add a constraint, highlight the cells B4:F6, drop down the arrow and click on \geq to set a minimum limit. Here, type whatever the minimum number of cases should be. To avoid the error message, simply type 1 and choose OK. Also, as hospital cases cannot be fractions, add another constraint to force these cells to be integers. Finally, a constraint could be added to set a total number of cases (cell H7). The Solver parameters should now appear as follows:



When Solve is chosen, the Solver carries out its analysis and finds a solution. This may be unsatisfactory, as it has calculated that the best way to minimise costs is to put the majority of cases in St George's as day patients. Further constraints could now be added to force the Solver to place minimum numbers of cases in the other hospitals, or set a maximum limit on St Georges' day cases.

Solver and Scenario Manager

The Solver uses sophisticated numeric analysis and iterative methods to perform trial-and-error calculations very quickly. The original values of the spreadsheet, therefore, have a profound effect on the result of a Solver solution. It may be the case that there is no concrete solution to a spreadsheet problem, and the Solver may produce a “best guess” within the specified constraints. Changing the original values and running the Solver again may produce a different result, and it may therefore be helpful to save the different “scenarios” that are produced. It may also be necessary to save scenarios where constraints have either been added, removed or amended. Using Excel’s Scenario Manager can facilitate this, by allowing you to save each new Solver solution and compare it to previous ones. For most complex spreadsheet problems, the Solver and Scenario Manager are used together.

Saving Solver Solutions

When the Solver finds a solution that seems feasible, you may want to save it.

Save a solution as a Scenario:

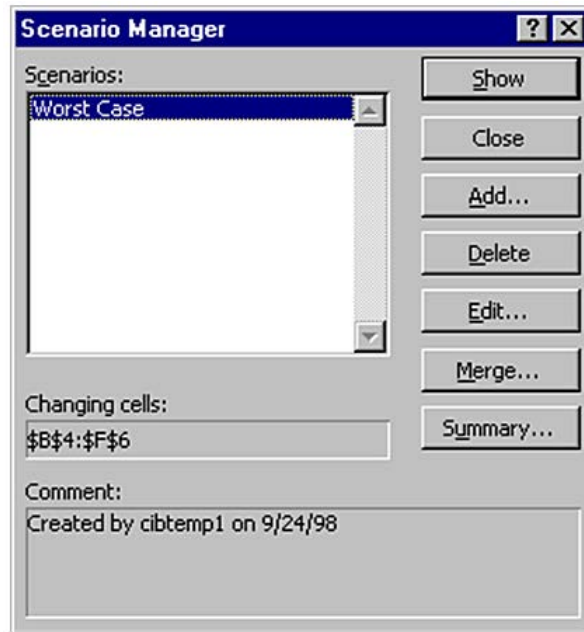
Mouse

1. Once Solver has found a solution, choose Save Scenario from the dialog box. The scenario can be named and either the new values kept or the original values restored.

To view a saved Scenario:

Mouse

1. To see those results again, choose Tools, Scenarios from the menu, and all named scenarios will be listed;



2. Click on the appropriate name and choose Show to display the results. Typically, a scenario only holds the results of the changing cells set in any Solver Parameters. Choosing Edit from the Scenario Manager allows these values to be changed, or the Scenario renamed.

Reports

Once a Solver solution is obtained, a report can be generated to summarise the changes that have been made and how accurately the constraints have been satisfied. When changing cells have integer constraints, the only meaningful type of report is an Answer Report, which gives details of the target cell's original value and new value, the changes to the adjustable cells as well as all constraints.

To create a solver report:

Mouse

1. Click Answer Report from the Solver Solution dialog box. Excel generates the report in a new window behind the current worksheet.
2. To see the report, choose Window, Answer Report 1 from the menu:

A1		Microsoft Excel 4.0 Answer Report	
Microsoft Excel 4.0 Answer Report			
Worksheet: HOSP.XLS			
Report Created: 2/9/93 9:45			
Target Cell (Min)			
Cell	Name	Original Value	Final Value
\$H\$17		538	234.6
Adjustable Cells			
Cell	Name	Original Value	Final Value
\$B\$4	Elective BARTS	4	1
\$C\$4	Elective CHARX	5	1
\$D\$4	Elective HAMSMTH	5	1
\$E\$4	Elective MOORFLDS	4	1
\$F\$4	Elective ST GEORGES	7	1
\$B\$5	Emerg BARTS	3	1
\$C\$5	Emerg CHARX	2	1
\$D\$5	Emerg HAMSMTH	4	1
\$E\$5	Emerg MOORFLDS	5	1

Useful Information

Typical Solver Models

It is usual to employ the Solver with relatively large spreadsheets, or where lots of variable data combine to produce a single formula result, such as a net profit figure or a total cost figure. In the EXCEL\EXAMPLES\SOLVER sub directory, there are a number of example worksheets which are suitable for use with the Solver.

.Notes

2 Views, Scenarios & Reports

By the end of this section you will be able to:

- Create Views
- Switch between Views
- Create Scenarios
- Switch between Scenarios
- Print Views and Scenarios in a report

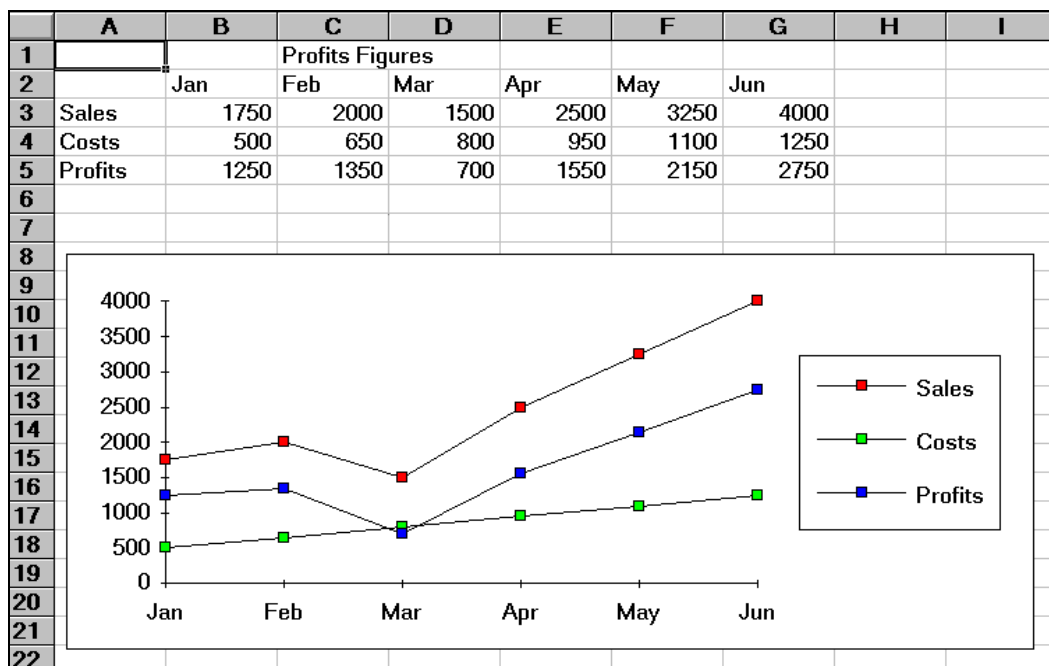
2.1 Views & Scenarios

Excel's Custom Views are used to save and recall different display settings and print options. The Scenario Manager allows you to store changes to spreadsheet data and perform "what if" analysis.

Custom Views

Custom views allow you to save different display and print settings, and impose them quickly and easily on the worksheet at any time. The settings which can be saved include print settings, row heights and column widths, display settings, selected cells, window size and positions, settings for panes and frozen titles. This can be advantageous when dealing with large worksheets where switching from one area to another might otherwise be awkward. It also allows a number of different print settings - including print area - to be saved as part of the same worksheet file.

Typical Custom View Model



In the example above, Sales, Costs and Profits data can be seen at the top of the screen, with an embedded line chart underneath. There is also an embedded pie chart, which, at the moment, can only be seen by scrolling down the spreadsheet. It would be useful to be able to “swap” between the line chart and the pie chart while still able to see the spreadsheet figures. It may also be helpful to define different page settings, depending on whether the line chart or pie chart are being printed. By defining different spreadsheet “views”, it is possible to toggle between the different charts and keep the data on the screen at all times. It is also possible to print a different header when a different type of chart is displayed.

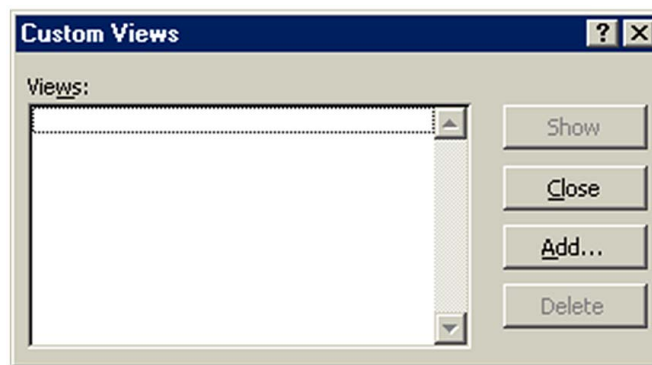
Defining a View

Before defining a view, you should ensure that the display options, zoom percentage, print settings etc. are as you wish to record them.

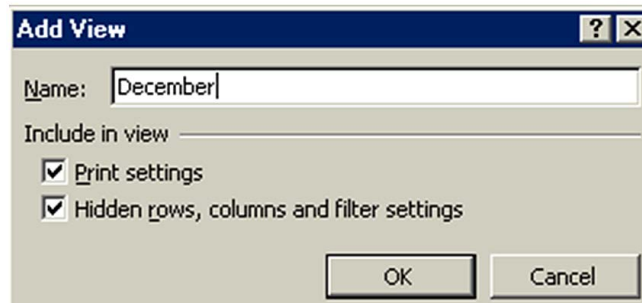
To create a view:

Mouse

1. Click View from the menu bar and choose Custom Views. The following dialog box will appear:



3. From the Custom Views dialog box, choose Add.
4. Choose whether or not to include print settings or hidden rows and columns as part of the View by checking the required options.



5. Enter the name under which this view is to be saved and click on OK.

Once a view has been defined, the display and print settings of the worksheet can be changed (for example in our typical model you may want a view to display the pie chart next to the data with an appropriate header when printing). You can then set up a View that would save those settings.

Showing a View

Having defined as many views as are needed for the current worksheet, you can switch between them.

To show a view:

Mouse

1. Choose Window, View, then highlight the name of the desired view.
2. Click on the Show button. If Print or Print Preview commands are executed, the correct settings (including the header) will be apply to each view.

To delete a view:

Mouse

1. Choose Window, View, then highlight the name of the desired view.
2. Click the Delete button.

Scenario Manager

The purpose of the Scenario Manager is to allow you to save a number of alternative inputs for specific cells which affect the results in a worksheet. For example, you may want to see the results of changes in costs figures, and their impact on profits. A variety of different costs figures could be saved as different “scenarios”, and each one loaded in turn to produce comparisons.

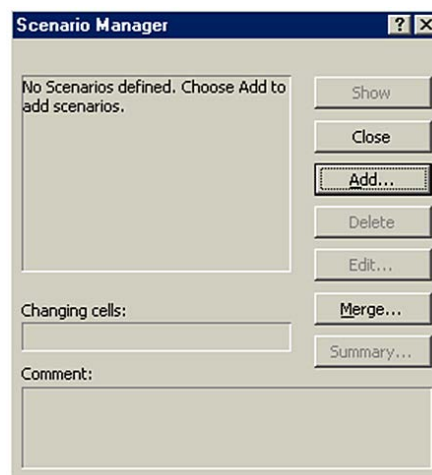
Load the Scenario Manager

Once you have constructed your worksheet with the appropriate data and formulae, you are ready to set up scenarios.

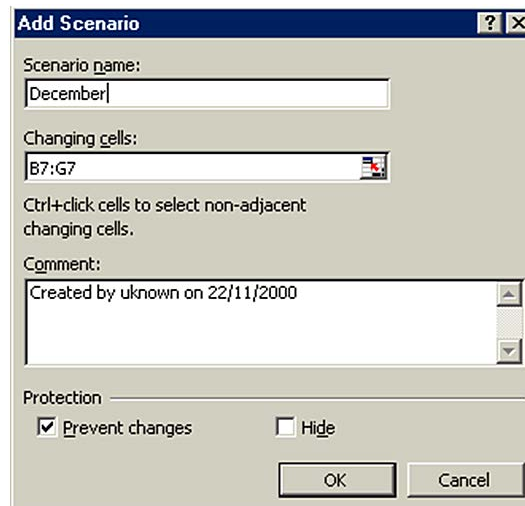
To set up scenarios:

Mouse

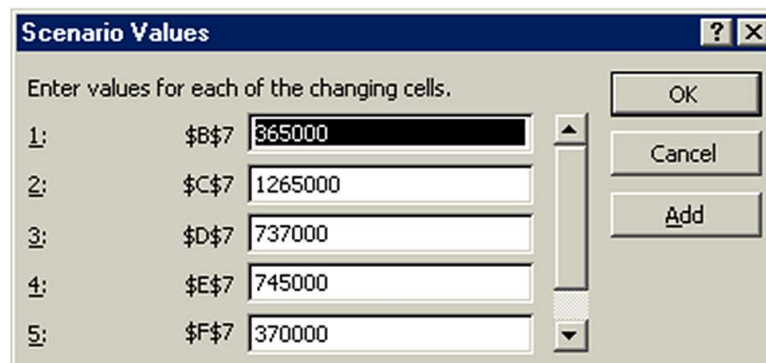
1. Choose Tools from the menu bar and click Scenarios. The Scenario Manager dialog box will appear:



2. Click the Add button to name your scenario and define the Changing cells (the cells containing the values you want to vary for each scenario). The following dialog will appear:



3. Type a name in the box marked Scenario name.
4. Click the button to the right of the Changing Cells box to collapse the dialog allowing you to view the worksheet and select the cells containing the variables. Non consecutive cells may be selected using [Ctrl] and click. Click the button to expand the Add Scenario dialog once more.
5. Click OK to add the Scenario. The following dialog box will appear:



6. Type the value for the first changing cell that you want to save under the current scenario name. Press [TAB] to move to the next changing cell and type a value for that changing cell. Repeat the process until all changing cell values have been set for the current scenario.
7. Click the OK button to return to the Scenario Manager dialog
8. Click OK again to exit the Scenario Manager.

Or

Click the Add button to define another scenario.

9. When all scenarios have been added, click OK to return to the Scenario Manager dialog and OK to exit the Scenario Manager.

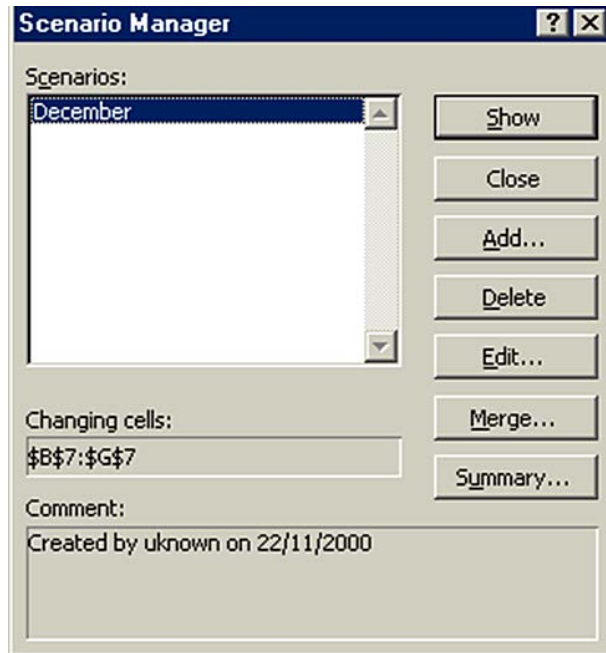
Showing a Scenario

When several scenarios have been created, each one in turn can be shown. The values associated with that scenario will appear in the designated Changing Cells, and all the dependant formulae on the worksheet will update. Any charts dependant on the changing values will also update. The Scenario Manager dialog box will remain on screen, allowing you to click on an alternative scenario name and show it instead.

To show scenarios:

Mouse

1. Choose Tools from the menu bar and click Scenarios. The Scenario Manager dialog box will appear listing saved scenarios:
2. Double-click the scenario name whose values you want on the worksheet. The values will appear in the changing cells.



3. The dialog box remains on-screen allowing you to double-click other scenario names and see how the changing values affect the data. Click OK to exit the Scenario Manager dialog.

Editing a Scenario

There are two main ways in which you might wish to change an existing scenario. You might want to amend the values of the changing cells, or add or delete changing cells. The approach is slightly different for each of these tasks.

To change values in a scenario

Mouse

1. Choose Tools, Scenarios to open the Scenario Manager dialog box.
2. Select the name of the scenario to be edited.
3. Click on the Edit button and click OK from the Edit Scenario dialog.
4. Change the values as required, and click on the OK button. This procedure can be repeated if necessary to edit other scenarios.

To add changing cells:

Mouse

1. Choose Tools, Scenarios to open the Scenario Manager dialog box.
2. Select the name of the scenario to be edited.
3. Click on the Edit button and click the button to the right of the Changing cells box to collapse the Edit Scenario dialog.

4. Hold down the [CTRL] key as you click and drag across the cells that you want to add. Click the button to expand the dialog.
5. Click OK to confirm the addition.
6. Enter the value for the newly added changing cell in the Changing cells dialog and click OK to confirm.
7. Click Close to exit the Scenario Manager.

To remove changing cells:

Mouse

1. Choose Tools, Scenarios to open the Scenario Manager dialog box.
2. Select the name of the scenario to be edited.
3. Click on the Edit button.
4. Drag across the cell references of the cells you want to remove from the Changing cells box and press [DELETE].
5. Click OK to confirm the deletion and OK again to close the Changing cells dialog.
6. Click Close to exit the Scenario Manager.

Deleting a Scenario

To delete a scenario:

Mouse

1. Choose Tools, Scenarios to open the Scenario Manager dialog box.
2. Select the name of the scenario to be deleted.
3. Click Delete button.

You can't undo the deletion of a scenario.

Print Reports

When you have Views and/or Scenarios defined in one worksheet, there are occasions where you want to print all the views, perhaps with each of the scenarios. Rather than accessing each view and scenario in turn and manually sending them to print, Excel allows you to send them all together by creating a report.

The Report Manager

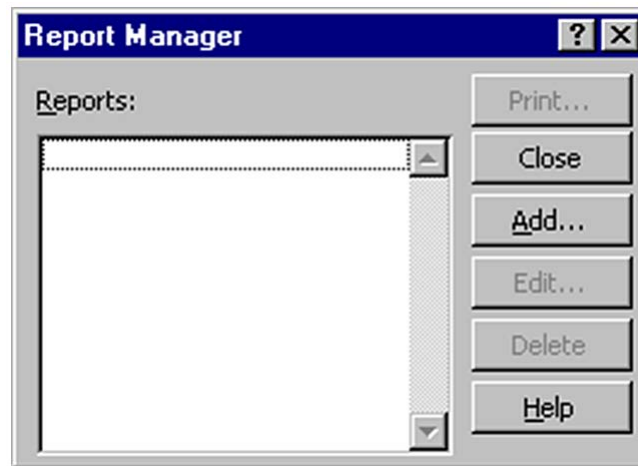
The tool you use to build reports is the Report Manager. This allows you to specify the sections you want in your report. Sections can be a defined View which you can also combine with a Scenario if necessary. Each section will print on a separate page.

To access the Report Manager:

Mouse

1. Choose View from the menu bar and click Report Manager. The following dialog box will appear:-

Create a Report



Once the Report Manager dialog is displayed, you can create new reports using the defined Views and Scenarios, edit existing reports or delete them.

To add a report:

Mouse

1. From the Report Manager dialog, click the Add button. The following dialog box will be displayed:-

Add Report ? X

Report Name:

To create a section, select a sheet. You may also choose a View and/or Scenario. Then, choose the Add button.

Section to Add

Sheet: ▼

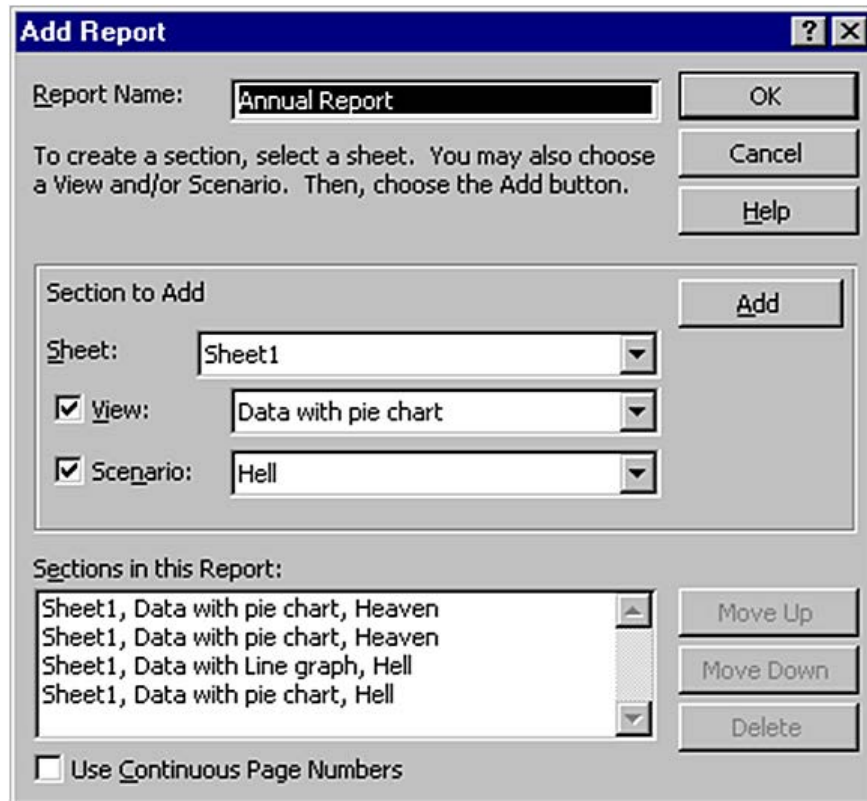
View: ▼

Scenario: ▼

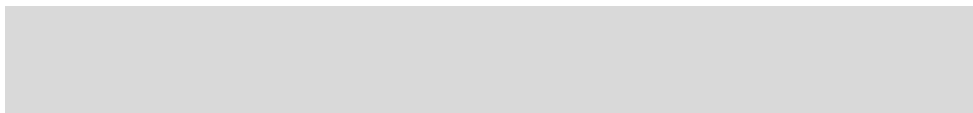
Sections in this Report:

Use Continuous Page Numbers

1. Type a name for your report in the Report Name text box.
2. Select the sheet containing the Views and Scenarios you have defined by clicking the drop-down list arrow to the right of the box labelled Sheet.
3. Build the sections by choosing a View from the drop-down list labelled View, and a Scenario from the drop-down list labelled Scenario. Click the Add button to add the section to the report.
4. Repeat steps 3 and 4 until you have built all the sections you want to print. They will appear listed in the Sections in this Report box at the bottom of the dialog.
5. If you want to reorganise the sections, click the section you want to move and use the Move Up and Move down buttons to position it in the correct place. You can also delete a selected section with the Delete button.



6. If you want consecutive page numbering throughout your report, check the Use Continuous Page Numbers box.
7. Click the OK button to save the Report and return to the previous dialog.



Print a Report

Once your report has been set up, you can send it to print. There is no facility to preview what the hard copy of your report will look like, however, when you issue the print command, Excel will actually run through each view and scenario on-screen, before sending it to the printer.

To print a report:

Mouse

1. Choose View from the menu bar and then Report Manager.



2. Click the report that you want to print and then click the Print button.
3. Type the number of copies of the report you want to print and click OK.

Edit a Report

You may need to change a report subsequent to setting it up.

To edit a report:

Mouse

1. Choose View from the menu bar and then Report Manager.
2. Click the report that you want to print and then click the Edit button.
3. Make changes to the report by adding new sections, deleting sections or reorganising them (see the section entitled Create a report earlier in this section for details).
4. Click OK to save the changes.

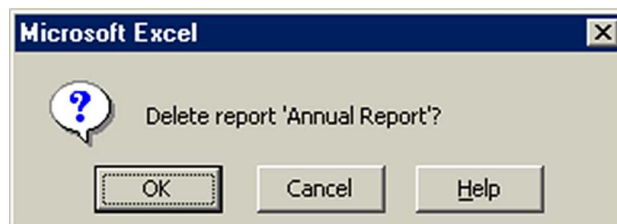
Delete a Report

Reports you have set up in any one work session are saved when you save the file. If you want to delete them, you can do so using the Report Manager dialog.

To delete a report:

Mouse

1. Choose View from the menu bar and click Report Manager.
2. Select the report that you want to delete and click the Delete button.



3. Excel will ask you to confirm the deletion. Click OK to delete the report or cancel to abandon the deletion.

If you click OK when Excel asks you if you want to delete a report, you can't undo the deletion.

Useful Information

Rather than recording macros to set print areas throughout a workbook and print them out, define them as Views first. Your macro only then needs to record you switching to each View in turn and printing it.

.Notes

3 Using Excel to Manage Lists

Objectives

By the end of this section you will be able to:

- Set up an Excel list
- Sort the list
- Create list subtotals
- Add, edit and delete list items using the data form
- Use AutoFilter to find specific list data
- Use the Advanced filtering tools
- Analyse list data with data and pivot tables

3.1 Excel Lists

Although Excel's primary function is as a Spreadsheet, it can also be used for a number of list operations. It is possible to store, and manipulate information (customer records, staff records, or stock inventories for example) on an Excel worksheet, organise it in different ways, and "query" the list to extract information which meets specific, user-defined criteria. The list is effectively treated as a database.

In order to use Excel's database capacity, information must be laid out in rows and columns subject to certain constraints. There are some database terms with which the user should become familiar:

List Terminology

Row and column content

The information being stored must be divided up into categories. For example, information on staff might include Firstname, Lastname, and Department. In an Excel List, each category must be entered in a separate column. Do not mix text and numbers in a column – the data must belong to the same category of information and therefore should be the same data type. Do not use spaces in front of column entries, use alignment buttons instead if you need to move data away from the column edges.

Column labels

This is the title at the top of each column, describing the category of information which it contains. Each label name must be unique and must be made up of text rather than numbers or calculations. The column names must appear directly above the list information - they may not be separated from the rest of the list by a blank row. Format your column labels to distinguish them from the list data.

List size and location

The List is the whole collection of information, all Fields, Fieldnames and Records and should be laid out as a regular block of data.

A list can be up to 256 columns wide by 65536 rows (an entire worksheet).

Do not place more than one list on a worksheet. If you want more than one list in a workbook, place each list on a separate sheet.

Leave at least one blank row and one blank column between the list and other data on the worksheet.

Place additional data diagonally below and to the right of your list. This ensures that data will not be affected when you filter the list.

Miscellaneous

Excel does not distinguish between upper and lower case characters in a list, unless you use the Case-sensitive sort option.

When you use formulae in lists, Excel uses the results of the formulae.

3.2 Sorting Data

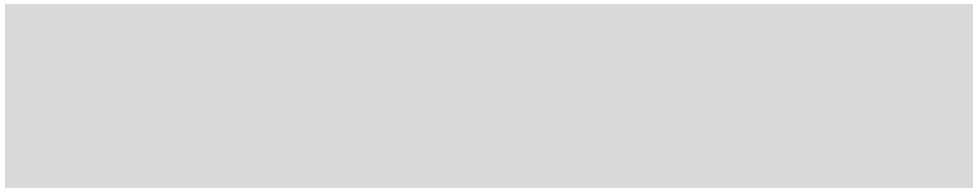
Although not confined to database information, the sorting facility in Excel is particularly appropriate for changing the order in which records are listed. Remember to save the file containing the database information prior to sorting.

If you will need to restore the original record order, it is a good idea to include a column of record numbers before sorting the database. This can be achieved simply by adding a column with a suitable heading, and using the fill handle or the data series command to enter consecutive numbers adjacent to each record.

To perform a single-level sort:

Mouse

1. Select a cell in the list within the column by which you want to sort.
2. Click the Sort Ascending or Sort Descending button from the toolbar.



To perform a multi-level sort:

Mouse

1. Select the data to be sorted. This will include all fields and all records, including the field names.



2. Choose Data, from the menu bar, then Sort... The following dialog box will appear in which from which you may specify the Sort fields and the Sort order.



3. From the Sort By drop-down list, select the field you want to use as the main sort order. Select the Ascending or Descending radio buttons depending on which order you wish the data sorted in.
4. Specify any sub-sorts using the Then By drop-down lists to pick the subsequent fields to sort by when duplicates occur in the main sort field.
5. Click OK.

Although there appears to be a maximum of three sort keys available, the user can in fact manipulate the database with a series of sorts to achieve the same results as if there were several sort keys. Excel will observe any sort keys specified, but where there are duplicates and no subsequent sort key to differentiate between them, Excel will maintain the order from previous sorts. In this way, if the user wishes to sort using more than three sort keys, sort on the least important keys first, then on the more important ones in a second operation.

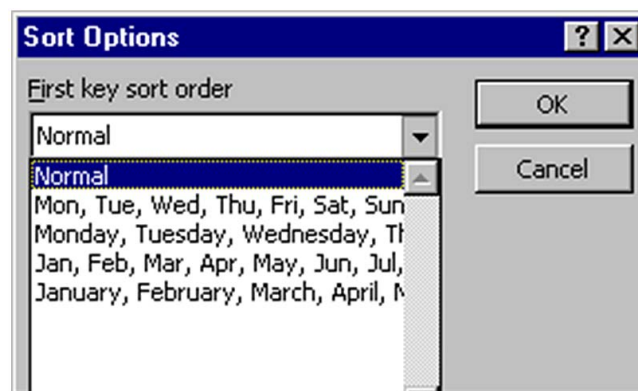
Custom Sorting Options

The ascending and descending sort orders rearrange your list by alphabetical, numerical, reverse alphabetical or reverse numerical order. For some types of data, such as months, this may not be the order that you need to use. You can use one of the custom sort orders provided with the Excel program to rearrange your data in chronological order by day of the week or by month.

To sort by a custom sort order:

Mouse

1. Place the active cell within the list.
2. Choose Data from the menu bar, then Sort.



3. From the Sort By drop-down list, select the column by which you want to sort.
4. Click on Options.
5. From the First Key Sort Order drop-down list, select a custom sort order.
6. Click on OK to return to the Sort dialog and OK again to perform the sort.

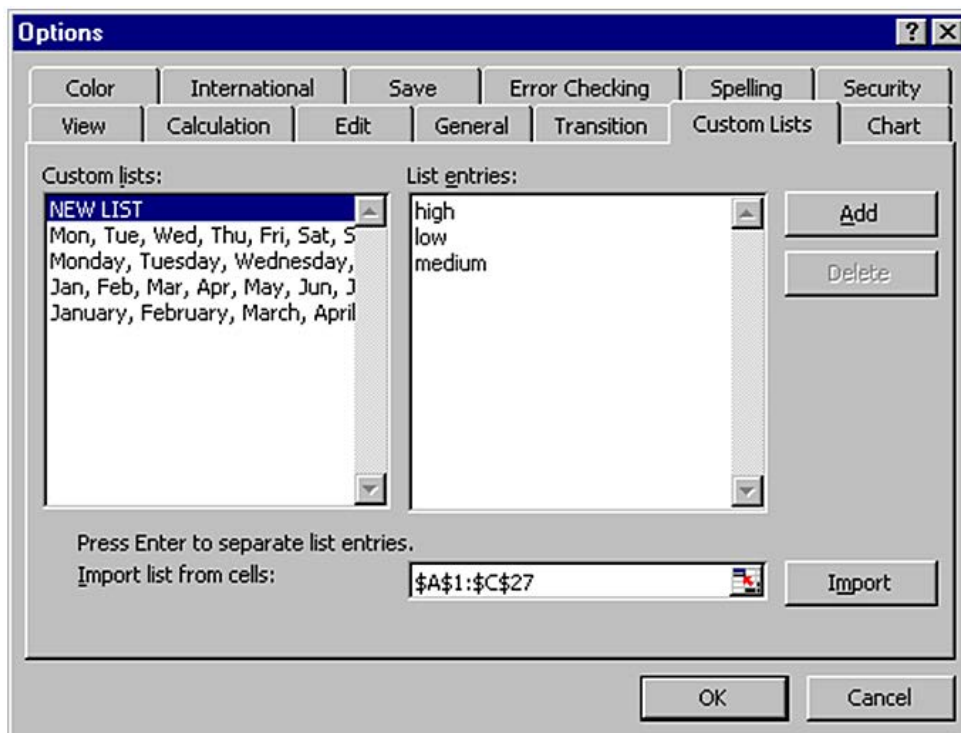
Creating a custom sort order

When sorting by ascending, descending or chronological order is not suitable for the data in a list, you can create a custom sort order. Custom sort orders enable you to give Excel the exact order to rearrange data. Custom sort orders are helpful for data such as Low, Medium, High, where neither alphabetical nor an existing custom sort order will provide the desired results.

To create a custom sort order:

Mouse

1. Choose Tools from the menu bar, then Options.
2. Activate the Custom Lists tab.
3. In the Custom Lists box, verify that New List is selected.
4. In the List Entries box, type each unique entry in the order you want to sort the entries. Separate the entries by pressing [ENTER].
5. Click Add.
6. Click OK.



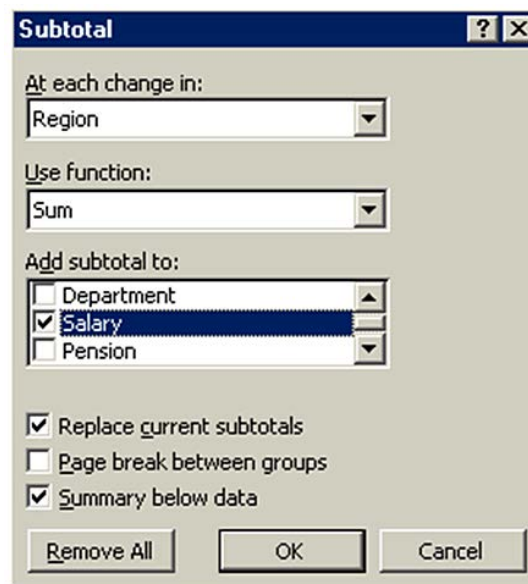
3.3 Adding subtotals to a list

Automatic subtotals are useful in summarising the data contained in a list. Subtotals are created by using an Excel summary function such as SUM(), COUNT() or AVERAGE(). To use the subtotals, your data must be organised in a properly designed list and sorted according to the column by which you want to summarise the data.

To add subtotals to a list:

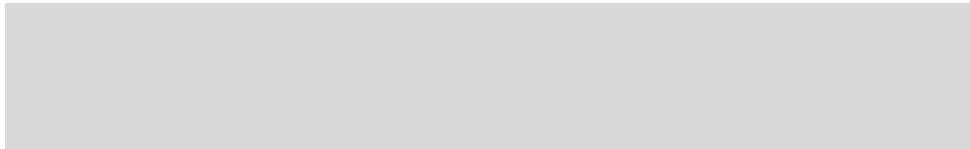
Mouse

1. Sort the list according to the column by which you want to summarise the data.



2. Choose Data from the menu bar, then Subtotals.
3. From the At Each Change In drop-down list, select the field by which you want to summarise the data.
4. From the Use Function drop-down list, select the summary function you want to use to generate the subtotals.

5. In the Add Subtotal To box, check the column to which you want the function to be applied.
6. If desired, check the options for replacing the current subtotals (if any), inserting a page break for each summary group, and inserting the summary below each group.
7. Click OK.



To remove subtotals from a list:

Mouse

1. Select a single cell somewhere within the subtalled list.
2. Choose Data from the menu bar, then Subtotals.
3. Click Remove All and then OK.

Examining subtotals

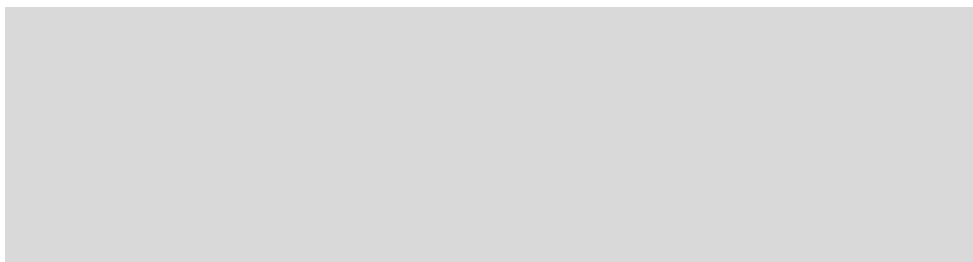
When you insert automatic subtotals, Excel creates an outline of your data. The outline enables you to show or hide certain sections of data by clicking on the outline buttons below the Name box on the formula bar. Grand total values are derived from the list data, not the subtotal rows.

	A	B	C	D	E	F	G
1	Date	Price	Product	Quantity	Customer	Salesperson	Total
2	02/01/96	1.75	Gimlet	25	Jones Brothers	Tom	43.75
3	08/01/96	1.75	Gimlet	25	Bloggs & Co.	David	43.75
4	12/01/96	1.75	Gimlet	70	Viking Supplies	Eleanor	122.5
5	14/01/96	1.75	Gimlet	50	Jones Brothers	Tom	87.5
6	22/01/96	1.75	Gimlet	250	Jones Brothers	Tom	437.5
7	28/01/96	1.75	Gimlet	25	Smith & Sons	Caroline	43.75
8	27/02/96	1.75	Gimlet	75	Endlebury Stores	Sharon	131.25
9	06/03/96	1.75	Gimlet	20	Viking Supplies	Eleanor	35
10	08/03/96	1.75	Gimlet	75	Smith & Sons	Carol	131.25
11	12/03/96	1.75	Gimlet	50	Jones Brothers	Caroline	87.5
12	18/03/96	1.75	Gimlet	35	Jones Brothers	Elaine	61.25
13	28/03/96	1.75	Gimlet	15	Smith & Sons	David	26.25
14	21/04/96	1.75	Gimlet	15	Viking Supplies	Eleanor	26.25
15	29/04/96	1.75	Gimlet	25	Bloggs & Co.	Elliott	43.75
16	Gimlet Total						1321.25
17	18/01/96	5.00	Ratchet	20	Bloggs & Co.	Carol	100

3.4 Filtering a List

When you filter a list, you display only the sets of data that meet a certain set of search conditions called *criteria*. The AutoFilter feature enables you to specify those search conditions from the list.

When you use the Data, Filter, AutoFilter command, drop-down list arrows are displayed next to each of the column labels in the list. When you open a drop-down list, a list of all the unique entries for that column is displayed. By selecting one of the entries from the drop-down list, called a *filter criterion* you instruct Excel what to search for. Then Excel filters the list so that only the sets of data that contain the entry you selected will be displayed. When Filter mode is active, arrows for the columns with filter criterion selected appear in blue on the worksheet, row numbers appear in blue, and the status bar displays either the number of rows that meet the criteria, or the text “Filter mode”. The sets of data that do not meet the criteria remain in the list but they are hidden.



To filter a list using AutoFilter:

Mouse

1. Place the active cell anywhere within your list.
2. Choose Data from the menu bar, Filter, AutoFilter. Your list column labels will appear with drop-down list arrows to the right.
3. Click the drop-down arrow for the column that you want to filter by to display the unique values from that column. Select the value you are filtering for.

	A	B	C	D	E	F	G
1	Date	Price	Product	Quantity	Customer	Salesperson	Total
2	02/01/96	1.75	Gimlet	25	Jones Brothers	Tom	43.75
3	08/01/96	1.75	Gimlet	25	Bloggs & Co.	David	43.75
4	12/01/96	1.75	Gimlet	70	Viking Sunnies	Fleanor	122.5

4. Repeat step 3 until you have set filter criteria for all columns that you wish to filter by.
5. The list will show only those rows that match your criteria.



Removing a single column filter:

Mouse

1. You can see which columns have filter criteria active because the drop-down list arrows are blue. Click the drop-down list arrow for the column whose criteria you wish to remove.
2. Select All at the top of the list.

Removing all column filters:

Mouse

1. Choose Data from the menu bar, then Filter, Show All.

Custom criteria

When you specify a filter criterion for a column from unique entries listed in the AutoFilter drop-down list, you can only select one filter criterion at a time. The Custom filter criterion enables you to filter a list to display sets of data that contain either of two unique entries in a column. This creates an OR condition. To meet the filter criteria, a set of data must meet either the first filter criterion or the second filter criterion.

You can also use the Custom criterion choice to find values that fall within a range. When you specify custom criteria, select a comparison operator from the drop-down list and then either type in a value or select it from the criteria drop-down list.

When you use custom criteria, you need to understand the comparison operators that Excel offers you. The table below outlines these:

Operator	Meaning
=	Equal to
>	Greater than
<	Less than
>=	Greater than or equal to
<=	Less than or equal to
<>	Not equal to

To specify “either/or” custom criteria:

Mouse

1. Click on the AutoFilter drop-down for the desired column.
2. Select Custom.
3. In the Custom AutoFilter dialog box from the first criteria drop-down list select one of the filter criteria. (The default operator is =).
4. Click on Or.
5. From the second operator drop-down list, select a comparison operator.
6. From the second criteria drop-down list select the other filter criterion.
7. Click OK. The filtered list shows the sets of data that meet either the first or the second specified criterion for the column.

Using custom criteria to find a range of values:

Mouse

1. Click the drop-down arrow for the column label whose range of values you want to filter by.

This will typically be numbers or dates

2. Click Custom. From the resulting dialog box, select the comparison operator to control the lower limiting value, for example > or >=.
3. From the first criteria drop-down list, select a value or type the value in.
4. Click OK

Or

Choose an upper limiting value by selecting a comparison operator from the second operator drop-down list and selecting a second criterion from the second criteria drop-down list or typing one in. Click OK.

Wildcards

You can use wildcards to search for text in common within the unique entries, even though the entire entry might not match. For example, searching for all of the sets of data that have entries in the last-name column that begin with “M” might display two Moores (where the entire entry matches) but might also display Madding and Martinez (where the entire entry does not match).

Wildcard	Finds	Example
* asterisk	Any set of characters that are in the same position as the asterisk	*.xls finds Filter.xls and sortdata.xls
? question mark	Any single character that is in the same position as the ?	B?t finds Bat, Bit, But and Bet
~ tilde	A question mark or an asterisk	Who~? Finds the text “Who?”

To filter a list using wildcards:

Mouse

1. With AutoFilter active, select the drop-down list arrow to the right of the column you want to use to filter the data.

Wildcards only work when filtering columns containing text

2. Choose Custom.
3. Ensure that the operator is set to =.
4. Type the pattern of letters you are filtering by with the asterisks and/or question marks inserted in the appropriate positions.
5. Click OK.

Turning off AutoFilter

When you no longer need to filter your data, you can switch the AutoFilter off in the following way:

To switch off AutoFilter:

Mouse

1. Choose Data from the menu bar, then Filter.
2. The AutoFilter option on the submenu will appear ticked showing that AutoFilter is currently active. Click AutoFilter to remove the tick and deactivate the AutoFilter.

Data Form

Once the List area has been defined, you may choose to view and operate on the records via the Excel Data Form. This is a dialog box that enables you to enter, edit or find sets of data. Working with a data form can be a time-saving tool when maintaining data in lists.

To activate the Data form:

1. Click on a cell within the list.
2. Choose Data from the menu bar, then Form..

The Data Form Screen

A dialog box will appear on screen, displaying the name of the worksheet containing the list across the title bar. Each column name will be listed down the left hand side of the dialog box, and the details for one record will be displayed.

Moving

There is a vertical scrollbar which can be used to move up and down through the available records. The current record number will appear at the top right of the Data Form, and will adjust as you move through the records.

The screenshot shows a window titled "Orders" with a blue title bar. On the left side, there are several input fields with labels: "Date:" (containing "02/01/1996"), "Price:" (containing "1.75"), "Product:" (containing "Gimlet"), "Quantity:" (containing "25"), "Customer:" (containing "Jones Brothers"), "Salesperson:" (containing "Tom"), and "Total:" (containing "43.75"). On the right side, there is a vertical list of buttons: "New", "Delete", "Restore", "Find Prev", "Find Next", "Criteria", and "Close". Above the "New" button, it says "1 of 63". A vertical scrollbar is located between the input fields and the buttons.

A series of buttons appears down the right hand side of the Data Form. These can be used to perform a number of different operations on the data.

To add records using the data form:

Mouse

1. Click on the New button to add a new record to the database.

The screenshot shows the same "Orders" window, but now it is in "New Record" mode. The input fields are empty. The "Total:" field is also empty. The "New" button is now highlighted, and the text "New Record" is displayed above it. The other buttons ("Delete", "Restore", "Find Prev", "Find Next", "Criteria", "Close") are still present. The vertical scrollbar is also visible.

2. The record number display will change to New Record, and the fields beside each fieldname will be cleared, waiting for you to input information.
3. Use Tab or [Shift] Tab to move from field to field.

To delete records using the data form:

Mouse

1. Move to the record you want to delete.
2. Click on the Delete button in order to delete the record currently on display.

This operation cannot be reversed.

Edit or Restore Records

You may click in any of the text boxes and edit the information it contains. If you click on the Restore button before moving away from the record displayed, the changes will be undone and the original information on that record will be restored.

Search for Specific Records

It is possible to specify particular field contents and require Excel to identify those records matching your specifications. This can be done using the Criteria button.

Entering Search Criteria

At the most basic level, either text or numeric data can be entered so that Excel will find those records where the relevant field exactly matches what you have entered. Excel is not case sensitive when matching criteria, so text can be entered in upper or lower case.

Excel will find those records which match the data entered in the criteria range, but will also match any records where the initial letters match the specified data. For example, searching for the first name Rob will find all exact matches, but will also match any records where the first name happens to be Robert or Robin.

When using the Data Form, if you wish to confine the search results to only those records where the first name is Rob, it would be necessary to enter the formula =Rob in the appropriate field in the Criteria form.

Criteria Entered	Results Matched
Rob	Rob; Robert; Robin
=Rob	Rob

Finding Ranges of Records

Relative or Comparison operators such as < or > can be entered with data. For example, <25 entered in a field entitled Age would limit the view to only those persons whose age was less than 25.

Relative Operators	Definition
=	Equal to
<	Less than
<=	Less than or Equal to
>	Greater than
>=	Greater than or Equal to
<>	Not Equal to

Comparison operators may also be used on fields containing text information. Entering <C in a field entitled Surname would limit the view to only those persons whose name began with either A or B.

Entering the = symbol on its own in a field would allow Excel to find those records where that field was blank. The <> symbol on its own in a field would identify records where that field was not blank.

Date searches may also be carried out using either exact matches or in combination with comparison operators. To find records dated earlier than 20th January 1993, you could enter <20/1/93.

Multiple Criteria Using the Data Form

A combination of different specifications may be entered in different fields and Excel will find only those records which meet all specifications. For example, if you enter Widget as the Product and Jones Brothers as the Customer, Excel will find only those orders which fulfil both criteria.



To find records by setting criteria:

Mouse

1. Click Criteria
2. A blank form will display. Use the [TAB] key to move to the text box for the field where you want to set the criteria and type it in.
3. Click Find Next to jump down to the first matching record in the list. Clicking Find Next will subsequently allow you to move through the matching records one by one until Excel beeps, signalling there are no more matches. Click Find Previous to jump to matching records in an upwards direction.

Clear Criteria

When you click the Criteria button Excel offers you a dialog where you can set criteria. Your last criteria will have been stored and remembered and will still be visible in the relevant text boxes.

To clear criteria:

Mouse

1. Click the Clear button.

To return to the data form:

Mouse

1. Click on the Form button to return you to the Data Form

3.5 Advanced Filtering

Sometimes, the filter criteria that you specify with AutoFilter will not yield the necessary results. For example, you cannot use AutoFilter to filter a list to display the more complex criteria of two separate AND conditions combined with an OR condition. To do this, you must use the Advanced Filter option. This relies on you setting up and defining a Criteria range on the worksheet where the data to be matched can be entered.

Set Criteria

The Criteria range usually consists of a copied set of the list column names, and a blank row immediately beneath into which you can type the data to be matched. It is a good idea to copy the column names from the top of the database into the area to be used as a criteria range, as this reduces the chance of there being any discrepancy between the two sets of names.

In fact, not all the column labels need to be included in the criteria range. It could be restricted to only those labels on which you wished to search, and those labels included could be displayed in a different order. Usually, however, the names are copied complete from the top of the list.

To define the Criteria range:

Mouse

1. Select the copied set of column labels and the blank row immediately beneath them and choose Insert from the menu bar, then Name, Define.
2. Type the word *Criteria* into the name box and press [ENTER].

Criteria		= Date								
	F	G	H	I	J	K	L	M	N	O
1	Salesperson	Total		Date	Price	Product	Quantity	Customer	Salesperson	Total
2	Tom	43.75								
3	David	43.75								

*You do not have to name the cells with the range name **Criteria**, but it will ensure that Excel automatically picks the correct group of cells as the criteria carrying cells whenever you use the Advanced Filter.*

To run an advanced filter:

Mouse

1. Enter criteria in the blank row of the criteria range under the appropriate column label(s).

Date	Price	Product	Quantity	Customer	Salesperson	Total
			>250		david	

1. Ensure that either a cell in the list is selected
2. Choose Data from the menu bar, then Filter, Advanced Filter. Excel will hide the records which do not match the search settings.

To remove a filter:

Mouse

1. When finished viewing the results of the Filter operation, choose Data, Filter, Show All.

Entering Search Criteria

At a basic level criteria entered in the Criteria range is subject to the same limitations as were outlined in the Data Form section, but making use of a user defined Criteria range rather than the Criteria section of the Data Form allows more complex searches to be performed.

It is important to remember to delete old criteria before applying a new filter. Otherwise the true results of a filter will not be shown. For example, if the first filter is applied with Johnson entered under Surname, and a subsequent filter is carried out for those who work in Finance, it is essential that the Name specification is cleared unless you deliberately wish to confine the filter to those people called Johnson who happen to work in the Finance department.

As with the Data Form, Excel will find records matching text information entered in the Criteria range, and records where the initial letters match the specified data. When working with a user defined criteria range, if you wish to confine filter results to only those records where, for example, the first name is Rob, it would be necessary to enter the formula `=Rob` in the Criteria range under the appropriate column label.

Criteria Entered	Results Matched
Rob	Rob; Robert; Robin
<code>=Rob</code>	Rob

Wildcards with Text Criteria

One variation on searches for text criteria consists of using text Wildcard symbols. In fact Wildcards may be used for searches using the Data Form screen also. The two Wildcard symbols may be familiar to users of other PC systems.

The Asterisk

The Asterisk (*) may be substituted for any group of characters. Searching for *Banking would find both Development Banking and Merchant Banking. If no Wildcard symbols are included in the search criteria, Excel usually assumes that there is an asterisk at the end of the specification, so it will match the data specified and any records where the initial data is the same.

The Question Mark

The Question Mark (?) may be substituted for any single character. The question mark identifies the position of the wildcard character within the string of text. T?m would find Tim or Tom. ?a would find all records where the second letter in the appropriate field was an A. Once again, Excel will assume that there is an asterisk on the end of the search specification unless otherwise informed. Entering T?m in a Firstname field would find Tim, Tom and Tommy. Use the syntax `=T?m` to confine the searches to three characters in length.

Multiple Criteria

Hitherto, the Criteria range has been described as a copied set of field names followed by a blank row, into which you may enter search specifications under the appropriate column names. As with the Data Form criteria screen, you may choose to enter criteria in the blank row under more than one field name. Entering Finance as the department and 7 as the grade for example, would find only those persons who met both criteria.

Multiple criteria on the same row dictates that the first specification AND all other specifications must be met in order for Excel to find the record. (See also use of the AND() function under Calculated Criteria).

Using Multiple Rows in the Criteria Range

There may be situations where you wish to find members of either Finance or Inven. In such an instance the Criteria range can be extended to include a second row into which you may enter specifications:

Extending the criteria range for OR criteria:

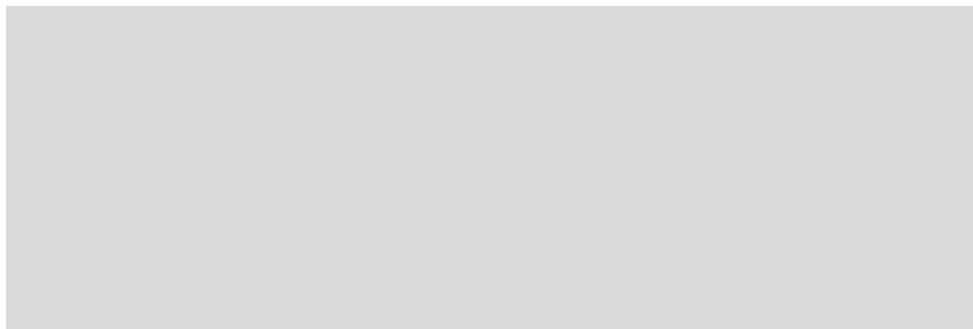
Mouse

1. First delete the current *Criteria* range name. Choose Insert from the menu bar, then Name, Define.
2. Select *Criteria* from the names list inside the dialog and click Delete.
3. Highlight the entire region to be redefined as the Criteria range - i.e. the copied set of Column names and the two rows (or more) immediately below, and choose Insert from the menu bar, then Name, Define.

criteria		= Date						
	H	I	J	K	L	M	N	O
1		Date	Price	Product	Quantity	Customer	Salesperson	Total
2					>250		david	
3								
4								

4. Type the word *Criteria* into the name box. and press [ENTER].

Now, entering search specifications in all rows within the range will allow Excel to identify all those records which meet the specifications in either the first OR the second row etc. (See also use of the OR() function under Calculated Criteria).



Checking the Criteria range

If you are getting surprising results when you filter your data, it may be because your criteria range contains unlabelled cells or extra rows that you thought you had removed from the range.

It is easy to double check the currently defined Criteria range at any time by making use of the range name which Excel applies to it. Using the [F5] function key will result in a dialog box showing all the currently named ranges on the worksheet.

Click on the name *Criteria* and choose OK. The area covered by that name will be highlighted. You may choose to alter the selection and redefine the *Criteria* range again to adjust it.

Calculated Criteria

You may also choose to find data subject to calculated criteria rather than exactly matching data or using comparison operators or wildcard characters. This would let you find data that matches the result of a formula, rather than a value that you have entered directly

To use calculated criteria:

Mouse

1. Include in the *Criteria* range one column name which is not used in the list - *Calc* for example.
2. Choose Insert from the menu bar, then Name, Define. Select *Criteria* from the names list and click Delete.
3. Select the column labels (including *Calc* or whatever you have named it) plus at least one row below them depending on whether you need use multiple OR conditions to filter your data.
4. Choose Insert from the menu bar, then Name, Define. Type *Criteria* into the Name box and press [ENTER]



In the example below, in order to find only those records where the value of an order would increase to over 500 if a 10% increase was applied, the formula shown could be entered in the *Calc* column.

I	J	K	L	M	N	O	P	Q
Date	Price	Product	Quantity	Customer	Salesperson	Total	Calc	
							=Total*1.1>500	

When entered, the calculated formula displays on the worksheet as TRUE or FALSE depending on the figures contained in the first record of the database to which the formula specifically refers. The underlying formula displays in the formula bar as usual.

I	J	K	L	M	N	O	P	Q
Date	Price	Product	Quantity	Customer	Salesperson	Total	Calc	
							FALSE	

You may use calculated fields to refer to and manipulate cells within the first record of the database, and to refer to cells outside of the database area. For example, the threshold figure of 500 might be held in an input cell outside the database. If this was the case, that cell reference could be included in the calculated search criteria, but the reference to it would need to be absolute or fixed.

Calculated Criteria using Functions

Some of Excel's Logical Functions are particularly suited to setting Criteria for a list search. Rather than having to extend the criteria range, you can specify criteria as arguments within the AND(), OR() or NOT() functions.

=AND()

If there are several specifications, every one of which must be met by all records found, use the AND() function and refer once again to the cells contained in the first record of the database. Text entries must be enclosed in double quotes. The AND() function may contain up to 30 comma separated arguments

Referring to the database in the diagram below, for example, if the Quantity must be greater than or equal to 500, the Product a Widget and the Salesperson David, the calculated function might be set as appears on the Formula bar:

P2		=AND(Product="widget",Quantity>=500,Salesperson="david")							
	H	I	J	K	L	M	N	O	P
1		Date	Price	Product	Quantity	Customer	Salesperson	Total	Calc
2									FALSE

=OR()

P2		=OR(Customer="jones brothers",Customer="viking supplies")							
	H	I	J	K	L	M	N	O	P
1		Date	Price	Product	Quantity	Customer	Salesperson	Total	Calc
2									FALSE

Searching for two different entries in the same field would necessitate the use of the OR() function. You may wish to locate all the records where the Customer is either Jones Brothers or Viking Supplies. Obviously the AND() function will be inappropriate, because the customer cannot be both companies simultaneously. Instead, the calculation might be:

Excel will find any records where any one of the arguments contained in the OR() function is met. The OR() function may contain up to 30 comma separated logical arguments.

=NOT()

The NOT() function can be used to exclude records meeting certain criteria from the find operation. Entering a calculation such as:

=NOT(product="Gimlet")

will allow Excel to find all those records where the Product is anything other than a Gimlet. The NOT() function contains only one argument. It can be combined with other functions, for example:

=AND(NOT(product="Gimlet"),quantity<20)

will find all those orders for items other than Gimlets where the Quantity ordered was less than 20.

3.6 Copying filtered data

You can use the Data, Filter, Advanced Filter command to copy the sets of data that meet the criteria in the Criteria range to another location on the worksheet.

- To copy filtered data to another location:
- Mouse

1. Set the Criteria range.
2. Place the active cell within the list.
3. Choose Data from the menu bar, then Filter, Advanced Filter.
4. In the resulting dialog box, choose Copy to Another Location.
5. In the Copy To text box, enter a worksheet cell that represents the top left-hand corner of where you would like the results.
6. Click OK.

Database Functions

Function	Purpose
DCOUNT(Database,Field,Criteria)	To count the number of records in a list which meet specified criteria. This function will only count value cells.
DCOUNTA(Database,Field,Criteria)	To count the number of records in a list which meet specified criteria. This function includes text and value cells.
DSUM(Database,Field,Criteria)	To add the contents of the chosen field in a list, subject to any specified criteria.
DMIN(Database,Field,Criteria)	To find the minimum value in the chosen field in a list, subject to any specified criteria.
DMAX(Database,Field,Criteria)	To find the maximum value in the chosen field in a list, subject to any specified criteria.
DAVERAGE(Database,Field,Criteria)	To find the average value of the chosen field in a list, subject to any specified criteria.
DGET(Database,Field,Criteria)	To return the contents of the chosen field subject to any specified criteria. This function is only valid where a single record meets the criteria set.
DPRODUCT(Database,Field,Criteria)	To multiply the contents of the chosen field in a list, subject to any specified criteria.

In all cases, if the Criteria range is blank, these functions will apply to the entire list area. Once data is entered in the Criteria range, the results of the Database functions will adjust to reflect only those records meeting the criteria.

The arguments for all of these functions are identical, and the easiest way to incorporate them into a worksheet is by using the Paste Function dialog.

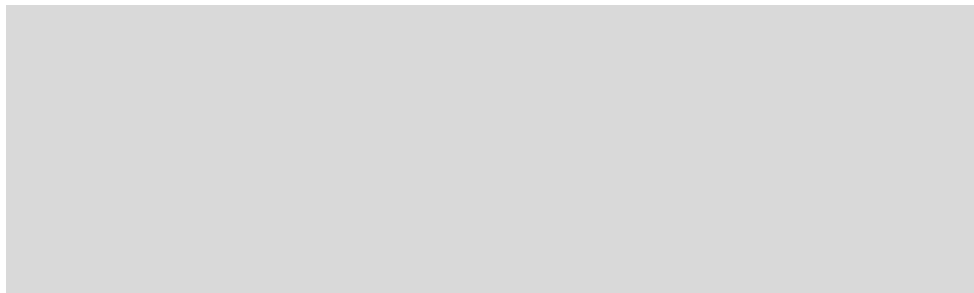
To enter a database function on the worksheet:

Mouse

1. Click the Function Wizard button from the standard toolbar.
2. In the function category list, select Database.
3. From the function name list choose the database function you require: e.g.=DMAX()
4. Enter the three arguments, list range, field name and criteria range.
5. Press [ENTER]

N5 = =DSUM(Database,"total",criteria)

I	J	K	L	M	N	O	P
Date	Price	Product	Quantity	Customer	Salesperson	Total	Calc
					david		
				David's revenue	1318.75		



=DMAX(database,"Price",criteria)

In the above example, the formula shown on the formula bar above has been entered into the cell to the right of the label “David’s revenue”. This formula sums the total column but only where the order was placed through the salesperson David. All the database functions look at what has been entered in the criteria range in order to give their results.

3.8 Pivot Tables

A pivot table can summarise large amounts of data using specified calculations and formats. It is called a pivot table because the headings can be rotated around the data to view or summarise it in different ways.

The source data can be:

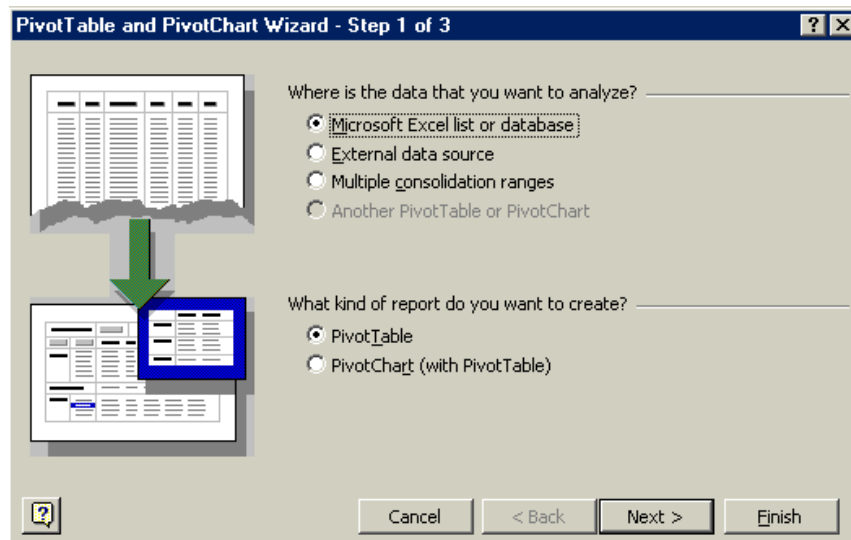
- An Excel worksheet database/list or any range that has labelled columns.
- A collection of ranges to be consolidated. The ranges must contain both labelled rows and columns.
- A database file created in an external application such as Access or Dbase.

The data in a pivot table cannot be changed as it is the summary of other data. The data itself can be changed and the pivot table recalculated. The pivot table can be reformatted.

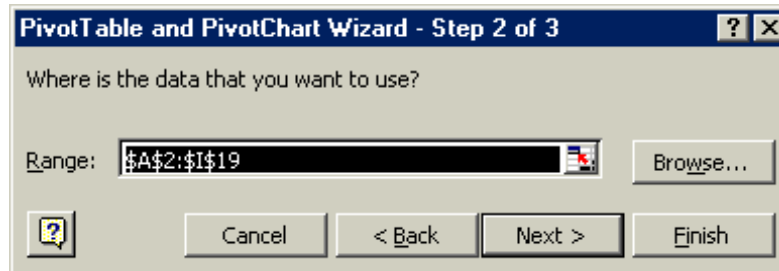
To create a pivot table:

Mouse

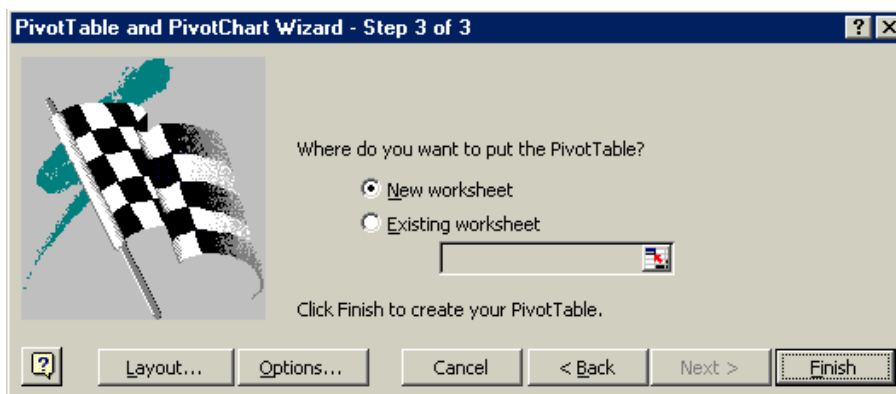
1. Select a cell within your list.
2. Choose Data from the menu bar, then PivotTable and Pivot Chart report.
3. Choose Microsoft Excel List or Database.



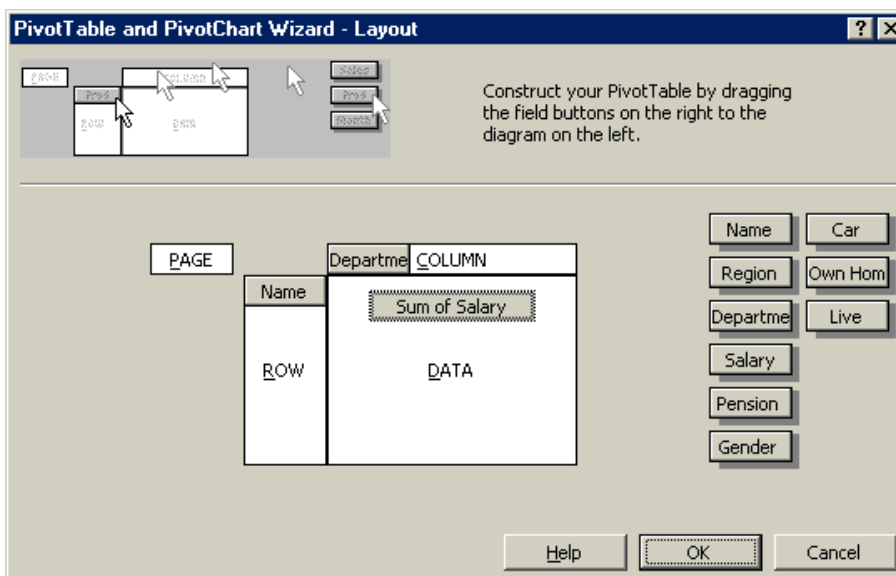
4. Choose Pivot Table
5. Choose the Next button to go to step 2 of the wizard.



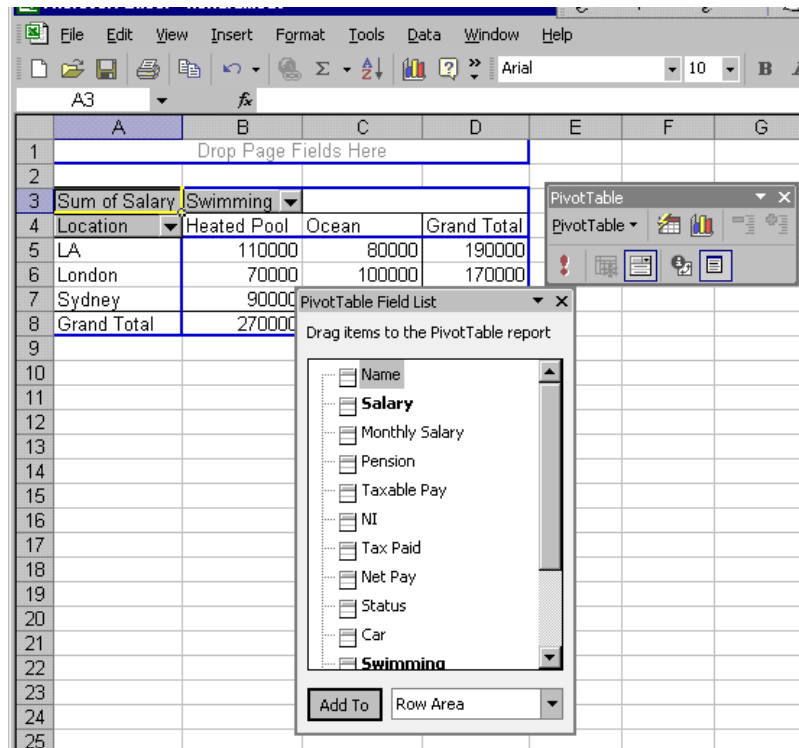
- This step verifies where your list data is. Provided the active cell was within your list when you launched the pivot table wizard, the worksheet range will be your list. Click Next.



- Step 3 is where you will select the destination for your Pivot Table and decide on the layout of the your Table. Click on Layout.



8. This screen will enable you to define your Pivot Table. A list of column labels will appear to the right of the screen. Drag and drop the field buttons for the ROWS, COLUMNS and PAGE labels. Each row, column or page can have more than one label.
9. Drag column labels to the DATA area for the fields to summarise. Excel assumes SUM as the calculation method for numeric fields and COUNT for non-numeric fields. You can change the calculation method by double-clicking the field in the DATA area.
10. Format your summary field in the DATA area by double-clicking it and choosing Number. Click OK, and then Click OK on the Layout screen.
11. Select a destination for your pivot table and click Finish



Managing pivot tables

When data is changed in the pivot table source list, the pivot table does not automatically recalculate.

To refresh a pivot table:

Mouse

1. Select any cell in the pivot table to be refreshed.
2. Choose Data from the menu bar, Refresh

Or



Click the refresh button on the Pivot table toolbar

Modifying a pivot table

Adding or deleting fields can modify a pivot table.

To modify a pivot table:

Mouse

1. Select any cell in the pivot table to be modified.

2. Choose Data from the menu bar, then PivotTable or click the Pivot Table Wizard button on the Pivot table toolbar, then click on layout.

To swap pivot table row and column headings:

Mouse

1. Using the Pivot Table Toolbar, drag and drop the column or row headings on and off the Pivot Table

Changing the data that appears in the pivot table:



1. Click on the down arrow next to the column or row headings within the pivot table
2. From the drop down box uncheck the data that you do not want shown, click on OK

Grouping pivot table items

Data can be summarised into higher level categories by grouping items within pivot table fields. Depending on the data in the field there are three ways to group items:

- Group selected items into specified categories.
- Automatically group numeric items
- Automatically group dates and times

To group selected items:

Mouse

1. Select the items to group. Select adjacent items by clicking and dragging or non-adjacent items by selecting each item whilst holding [CTRL].
2. Choose Data from the menu bar, then Group and Outline, Group

To group numeric items into ranges:

Mouse

1. Select a single item.

2. Choose Data from the menu bar, then Group and Outline, Group
3. Excel displays a dialog box in which to enter starting, ending and interval values. Enter appropriate values
4. Click OK.

To group a date or time in a range:

Mouse

1. Select a single item.
2. Choose Data from the menu bar, then Group and Outline, Group.
3. Excel displays a dialog box in which to enter starting, ending and interval values.
4. Enter appropriate values and click OK.

Creating a Pivot Table Chart

Mouse

1. Select a cell within your list.
2. Choose Data from the menu bar, then PivotTable and Pivot Chart report.
3. Choose Microsoft Excel List or Database.
4. Choose PivotChart (with Pivot Table), click on Next
5. Follow though the steps as before click on Finish
6. A chart sheet will appear displaying your Chart
7. All of the modifying features work in the same way as a standard pivot table.

8. To change the format of the chart see Section Four

Useful Information

If you are experiencing problems analysing list data check the following:-

- Your list is correctly set up with the first row containing the column labels identifying data in each of the columns and no blank rows between the headings and the first row of data.
- Your column headings are not ambiguous - ie they cannot be confused with function names or range names.
- Your column headings are formatted to make them stand out from the data.
- Your column headings ideally should not contain spaces - you can remove the spaces completely or replace them with an underscore (_) character.
- Your criteria range should only contain a row of headings and blank rows below. The headings must exactly match the headings at the top of your list.
- Problems sometimes occur if the criteria range looks blank but perhaps has a space in it.

.Notes

4 Charts

Objectives

By the end of this section you will be able to:

- Create embedded charts
- Create separate page charts
- Change chart types and formats
- Add and remove chart data
- Add trend lines to charts
- Create picture charts

4.1 Introduction to Charting

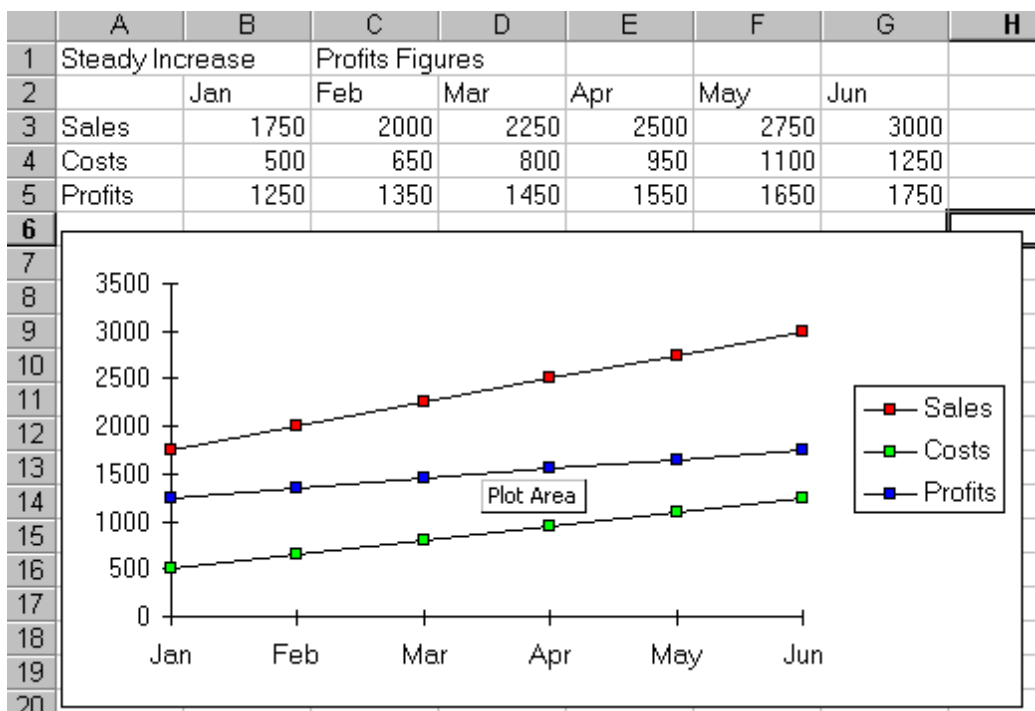
One of the most impressive aspects of Excel is its charting ability. There are endless variations available, allowing you to produce a chart, edit and format it, include notes, arrows, titles and various other extras as desired. This manual will look at many of the issues involved in producing and formatting Excel charts.

Charts are based on data contained in Excel Worksheets. It is necessary to understand how Excel picks up the data to be used in a chart because the way in which the data is laid out will influence how the chart is presented.

Terminology

As a starting point, there are some terms used in charting which should be understood by you. The terms defined below relate to the example car sales worksheet and column chart which appear beneath the table:

Data Point	An individual figure on the spreadsheet which is reflected in the chart e.g. Fred's Orion sales figure
Data Series	A collection of related data points, e.g. all of Fred's figures, which will appear on a chart as markers (bars, for example) of the same colour
Legend	The "key" to the chart, identifying which patterns/colours relate to which data series
Marker	A bar, column, or slice of pie for example, representing a data point
Category	The category axis appears across the bottom of a graph (pie charts excepted) and the categories are listed here. Points within the different data series are grouped by category



Excel Charts

Excel offers a wide range of types and formats from which you can choose when producing charts. However, the charts themselves can exist in different forms and it is important to understand the difference between them. The first form is an embedded chart, the second is a separate chart page.

Embedded Charts

An embedded chart appears on the worksheet where it was created. It is an embedded object, which does not normally appear in its own window, and has no separate existence apart from the worksheet. The chart is saved only when the worksheet file itself is saved, and will be printed with the worksheet in which it is embedded. The Chart Wizard will ask you whether you want an embedded or separate chart when you first create one.

Separate Chart Pages

A chart sheet, although linked to the worksheet whose figures it represents, exists as a separate page in a workbook.

4.2 ChartWizard

Excel has a 4-step process for creating a chart, called the ChartWizard. Each step explains what you are supposed to do at each stage. The steps are as follows:

- Choose the type of chart
- Check that you have selected the correct data
- Choose the Chart Options required, i.e. labels, title or legend
- Choose whether you want the chart on a new sheet or as an object in a sheet

To create a chart using the wizard:

Mouse

1. Before proceeding with the above steps you should select the data you want to chart. When selecting this data, you must include at least one series of numbers. You may also wish to include text headings above and/or alongside your figures as it may be helpful to see these on the chart. The following illustration depicts a typical selection for charting.
2. Click on the ChartWizard button on the Standard toolbar – the ChartWizard dialog will open and guide you through the four steps of the ChartWizard.
3. Step 1 – choose the type of chart required. Use the Press and hold to view sample button to see what the chart will look like. Click Next to move to Step 2.
4. Step 2 – specify the data to be plotted on the chart – these will be the cells you selected before launching the Chart Wizard. If you have changed your mind and no need to include extra cells, you can select them now by clicking in the Data Range text box. Click Next to move to the next step.
5. Step 3 – change the way the data in the chart looks. This is where you can turn on and off some of the standard options for the chart type you selected.

Chart Element	Description
Titles	This is the area where you can specify the titles to have on the chart (i.e. X-axis “1998”, Z-axis “GBP”)
Axes	Here you specify whether you want a Y/Z axis and whether you are using timescales to plot your data

Gridlines	The gridline tab allows you to switch on and off horizontal and vertical gridlines
Legend	Use this tab to switch the legend on and off or reposition it
Data Labels	The Data Labels tab allows you to display the amount each point represents or display the label (i.e. in the example above, each cylinder would have Qtr1, Qtr2 displayed as appropriate at the top of each data marker)
Data Table	The Data Table tab will display a grid underneath the chart that will show the information that is being plotted.

Make your choices and click Next.

- The final step allows you to add the chart either as a new chart sheet or as an embedded object that will print alongside the data it represents. Make your choice and click Finish.

Moving and resizing embedded charts

Once the chart object has been created and stored as an embedded object, you can move and resize it.

To move an embedded chart:

Mouse

1. Click just inside the chart frame border and hold the mouse button down as you drag. Release the mouse when the chart is in the desired location.

To resize an embedded chart:

Mouse

1. Click just inside the Chart frame border.
2. Position the mouse over one of the handles provided at the object's corners.
3. Drag up, down, left or right.

Hold down the [ALT] key if you wish the chart to resize by snapping to the cell gridlines

Creating Separate Chart Pages

The wizard will offer you the option of creating an embedded or a separate page chart, however, there is a very quick way of producing a separate page chart using Excel's default chart settings.

To create a separate chart file:

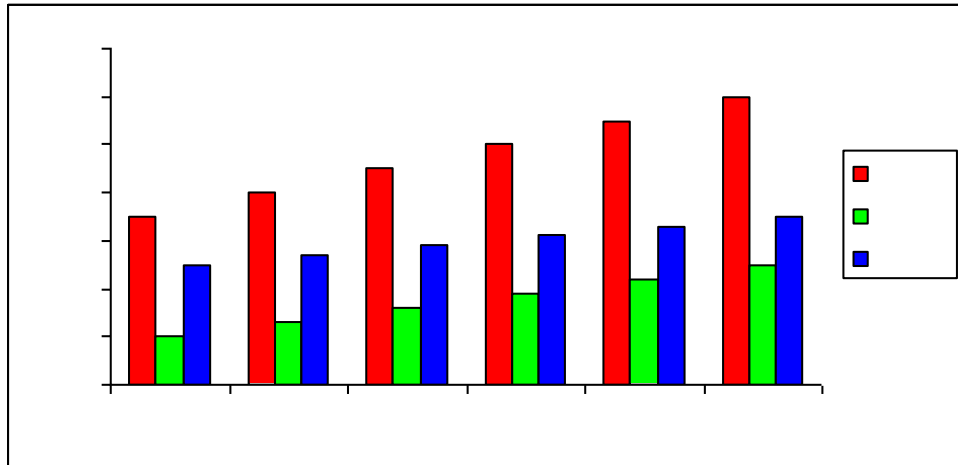
Keyboard

1. Select the data to be charted, including row and column headings
2. Tap the [F11] function key.

This technique will result in a chart window appearing on screen, reflecting the worksheet data which was selected. The default graph settings are for a 2-dimensional column chart.

4.3 Data Layout

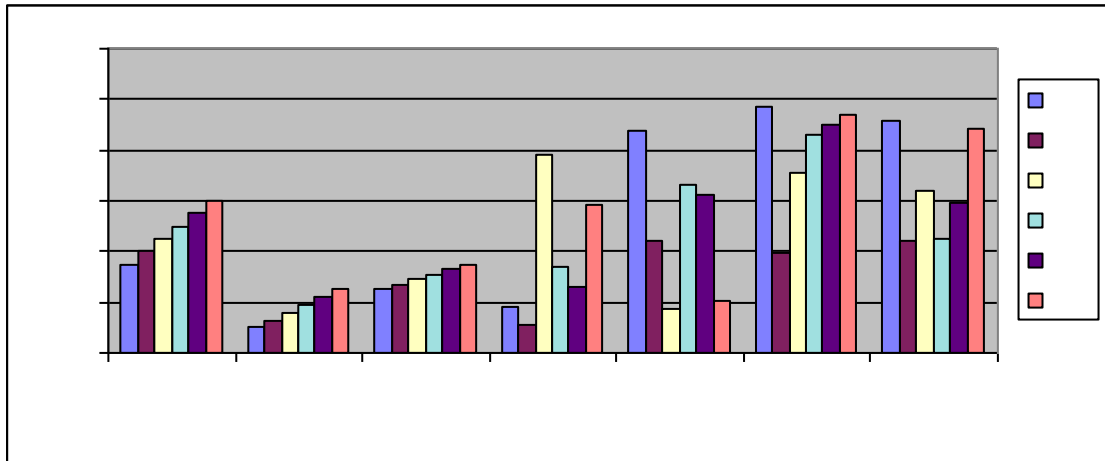
Steady Increase	Profits Figures					
	Jan	Feb	Mar	Apr	May	Jun
Sales	1750	2000	2250	2500	2750	3000
Costs	500	650	800	950	1100	1250
Profits	1250	1350	1450	1550	1650	1750



Depending on the “shape” of the selected data, Excel will assign categories and data series to either the rows or columns of information. Usually it will be assumed that there are more categories than data series, therefore, if there are more rows than columns of selected information, the data series will be based on columns, with the legend labels being picked up from the row across the top of the selected area and the category labels being picked up from the leftmost column:

If there are more columns than rows in the selected area, the data series will be based on rows, with the legend labels being picked up from the leftmost column and the category labels taken from the top row of the selected area:

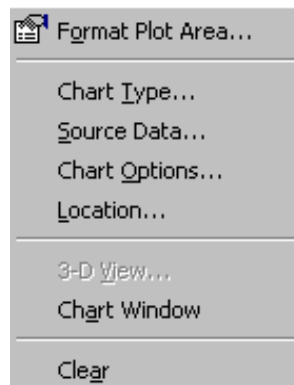
Steady Increase	Profits Figures					
	Jan	Feb	Mar	Apr	May	Jun
Sales	1750	2000	2250	2500	2750	3000
variable costs	500	650	800	950	1100	1250
Profits	1250	1350	1450	1550	1650	1750
Fixed overheads	2136	3028	4837	2180	2210	65
Rental	2347	3636	4163	2444	4773	1628
Salaries	3580	4923	4114	3378	2901	4288
Plant and machinery	4647	759	4677	786	1891	2683



If the number of rows and columns is the same, Excel will opt for data series in rows. It is possible to override the choice made by Excel in how the data series and categories are decided. Details of this procedure will be found under the section on manipulating data.

Shortcut Menus

You may be familiar with the Shortcut menus associated with the selected cell(s) on the Excel worksheet. When working on a chart - either embedded on a worksheet or in its own window, clicking on the chart with the secondary mouse button will call up a Charting Shortcut menu.



The Shortcut menu will contain a selection of choices from some of the Standard Menu bar options mostly relating to the chart as an embedded object - almost like a graphic on the worksheet.

4.4 Chart Toolbar

There is a Chart toolbar in Excel which includes tools for many of the most commonly accessed charting options. The toolbar will usually appear on screen automatically when a chart (either embedded or separate) is active. When dealing with an embedded chart, you may find that the Chart toolbar vanishes if an area on the worksheet is selected, then reappears when the chart is selected.



If you deliberately hide the Chart toolbar while the chart is selected, it will no longer appear automatically on selecting the chart.

4.5 Chart Types

There are several different types of chart available within Excel. The type to choose will vary depending on the data involved and what information the chart is intended to convey or highlight. Practice will improve your instinct on which type of chart to use in each instance. Initially it may be useful to try different types until the result is reasonably close to your requirements, and then add custom formats and elements as desired. Some chart types are very specialised and may only be of use to particular business sectors.

Available types



Click on the Chart button from the chart toolbar to see the chart types available.

Selecting any of the types listed will apply a given chart type to the active chart. The most useful types available and some of their applications have been summarised below:

Area

Area charts can be 2 or 3-dimensional. They are used to compare the change in volume of a data series over time, emphasising the amount of change rather than the rate of change. Area charts show clearly how individual data series contribute to make up the whole volume of information represented in the graph.

Bar

Bar charts can be 2 or 3-Dimensional. They are used to show individual figures at a specific time or to compare different items. Categories are listed vertically, so that bars appear on the horizontal, thus there is less emphasis on time flow. Bars extending to the right represent positive values while those extending left represent negative values.

Column

Column charts can be 2 or 3-Dimensional. They are frequently used to show variation of different items over a period of time. Categories (often days or months for example, representing a progression of time) are listed horizontally and columns are displayed side by side, making for easy comparisons.

Two variations on the theme of Column charts are represented by further tools on the Chart toolbar. The Stacked Column chart can be used to show variations over a period of time, but also shows how each data series contributes to the whole. A further variation on the 3-D column chart produces 3-D columns in a 3-D plot area, receding away from the viewer.

Line

Line charts can be 2 or 3-Dimensional. Line charts are used to compare trends over time. There are similarities with Area charts, but line charts tend to emphasise the rate of change rather than volume of change over time. 3-D lines appear as “ribbons” which can be easier to see on the chart.

Pie

Pie charts can be 2 or 3-Dimensional. They are used to compare the size of the parts with the whole. Only one data series can be plotted, making up 100%. Pie charts within their own window can be made to “explode” by dragging one or more pieces of pie away from the centre.

Radar

Each category in a radar chart has its own axis radiating from the centre point. Data points are plotted along each spoke, and data points belonging to the same series are connected by lines.

XY Scatter Charts

XY charts are used to compare two different numeric data series, and can be useful in determining whether one set of figures might be dependent on the other. They are also useful if the data on the X axis represents uneven intervals of time or increments of measurement.

Combination

A combination chart allows you to overlay one 2-Dimensional chart type on top of another. This can be useful for comparing different types of data, or for charting data requiring two different axis scales. Once the combination chart has been set up, the actual type of the main or overlay chart can be changed by you.

3-D Surface

3-D Surface charts present information in an almost topographical layout. They can be used to pinpoint the high and low points resulting from two changing variables. It can be helpful to think of a 3-D surface chart as a 3-D Column chart which has had a rubber sheet stretched over the tops of the columns.

To change the chart type:

Mouse

1. Select the created chart.
2. Click the chart type button from the Chart toolbar.
3. Click on the chart that you want to use to plot your data. The selected type will be applied to your chart.

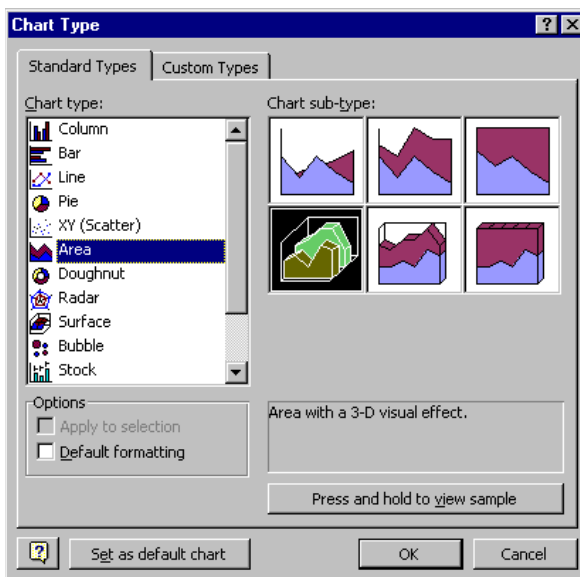
Default Chart type

The default graph setting in Excel is set to a simple 2-dimensional column chart, however you can change the default to any of the types offered within the chart type dialog.

To set the default chart type:

Mouse

1. Choose Chart from the menu bar, then Chart type.



2. Select the chart type from the list and click on the specific format that you want the chart to have from the gallery of pictures on the right.
3. Click the Set as default chart button.

New charts created from now on will use the default format as defined by you.

Formatting Charts

There are several different ways of formatting the various elements in a chart. Some formats, such as adding a legend can be applied to a chart using the Chart toolbar.

Calling up the Shortcut menu on a Chart will also allow you to access the dialog boxes which can be used to change formatting on the entire chart.

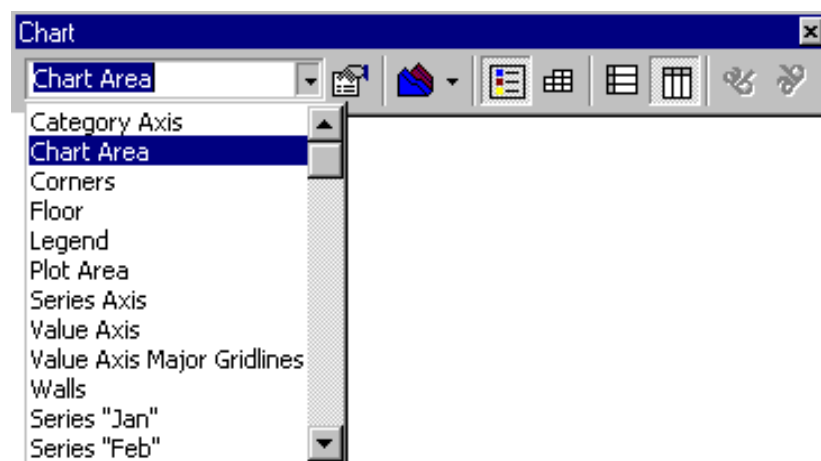
Format chart elements

Your chart is made up of many different elements each of which can be formatted. You must select the particular element that you want to format prior to changing it.

To select a chart element:

Mouse

1. Select your chart by clicking on it.




2. Click the drop-down list arrow to the right of the chart element list box on the charting toolbar. A list of all the chart elements will appear.
3. Click on the element you wish to select.

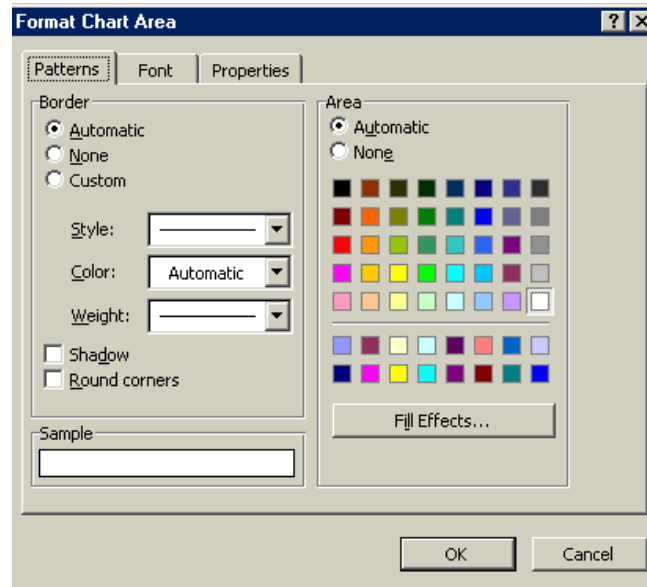
Format Chart Area

You may choose to add a Border to the chart, or add patterns and shading to its background.

To format the chart area:

Mouse

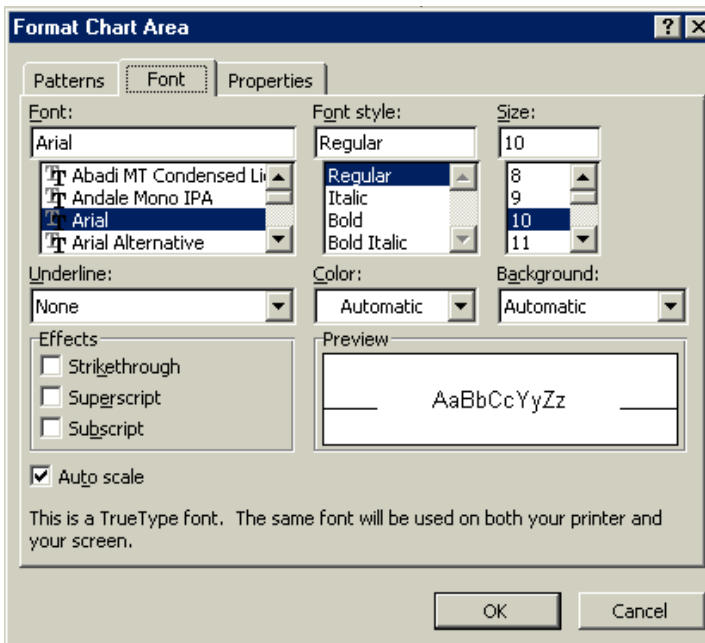
1. Select the chart area.
2.  Click the Format selected item button from the Chart toolbar. The following dialog box will appear:



3. Set the Border option to add a border around the outside of the chart area.
4. Use the Area option to specify background colours.
5. Click the Font tab to set font formatting options for the whole chart.
6. Click the Options tab for settings determining how the chart will move and print.
7. Click on OK when the desired settings have been selected.

4.6 Font

From here, you can choose the desired Font for the legend (or other selected text), the Font Style and the Size.



Special effects such as Strikeout or Underline may be applied to the selected text by clicking the appropriate Check boxes [•]


The Colour to be applied to the selected text may be chosen from a drop down list, and the Sample area will change to reflect the chosen settings. A further refinement allows you to dictate how the Background behind the text will appear.

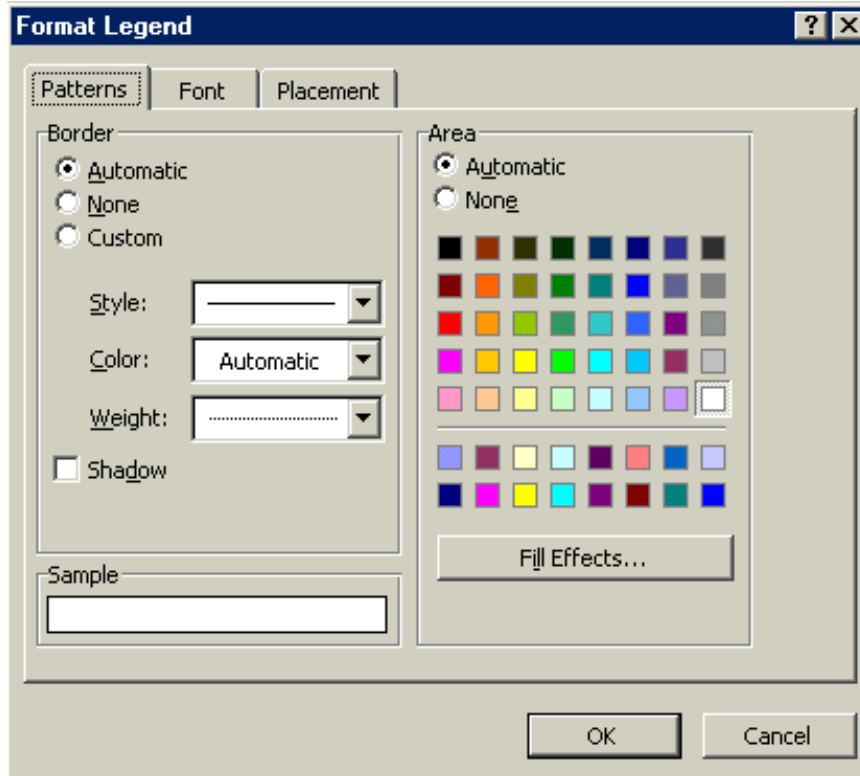
Formatting the Legend

The Legend can be selected and formatting like the other chart elements The legend can be positioned manually simply by pointing and dragging it to a new position on the chart, but there are some preset positions which can be selected from this dialog box.

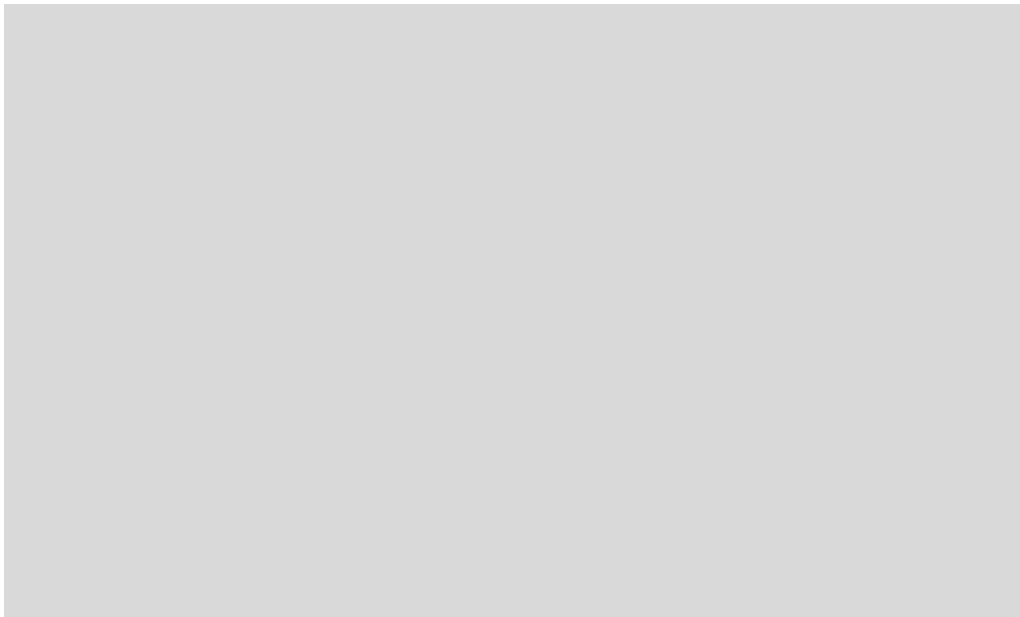
To format the legend:

Mouse

1.  Select the Legend.
2. Click the Format selected item button from the Chart toolbar.



3. When all the options have been dealt with satisfactorily, click on OK.



Unattached Text

Floating text may be typed directly onto the Chart, then dragged to the desired position.

To add floating text to a chart:

Mouse

1. With your chart selected, type the text you want to see displayed on it and press [ENTER].
2. Move the text to the desired location by clicking and dragging it.

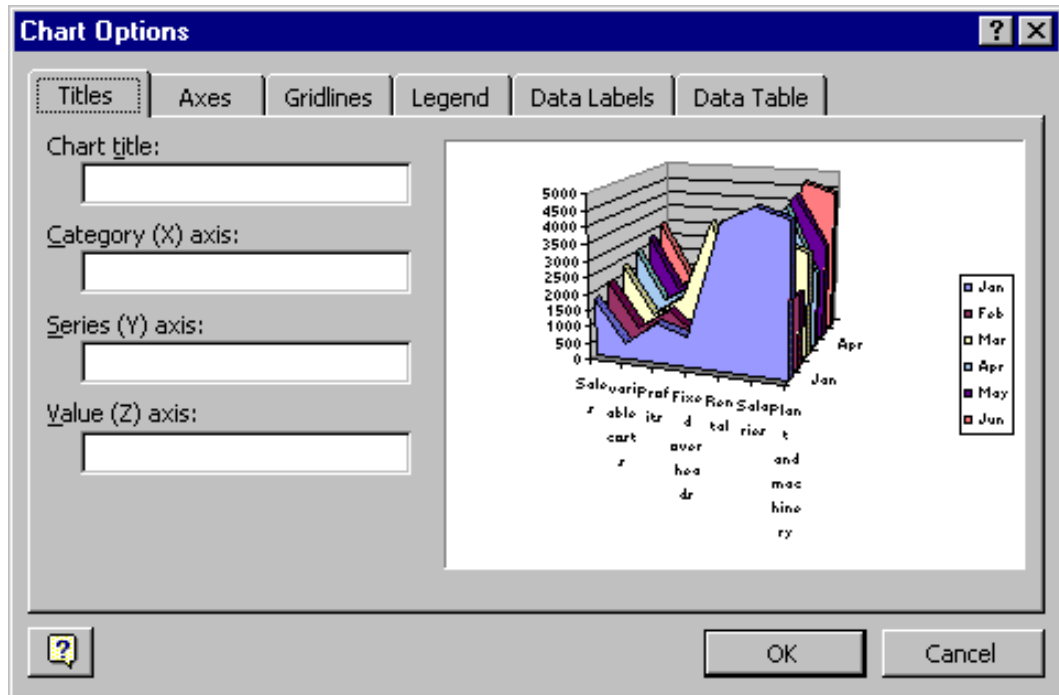
Basic Chart Formats

In addition to double clicking in order to edit specific chart elements, you may use the Chart Options item from the Chart Menu bar to access a variety of formatting options.

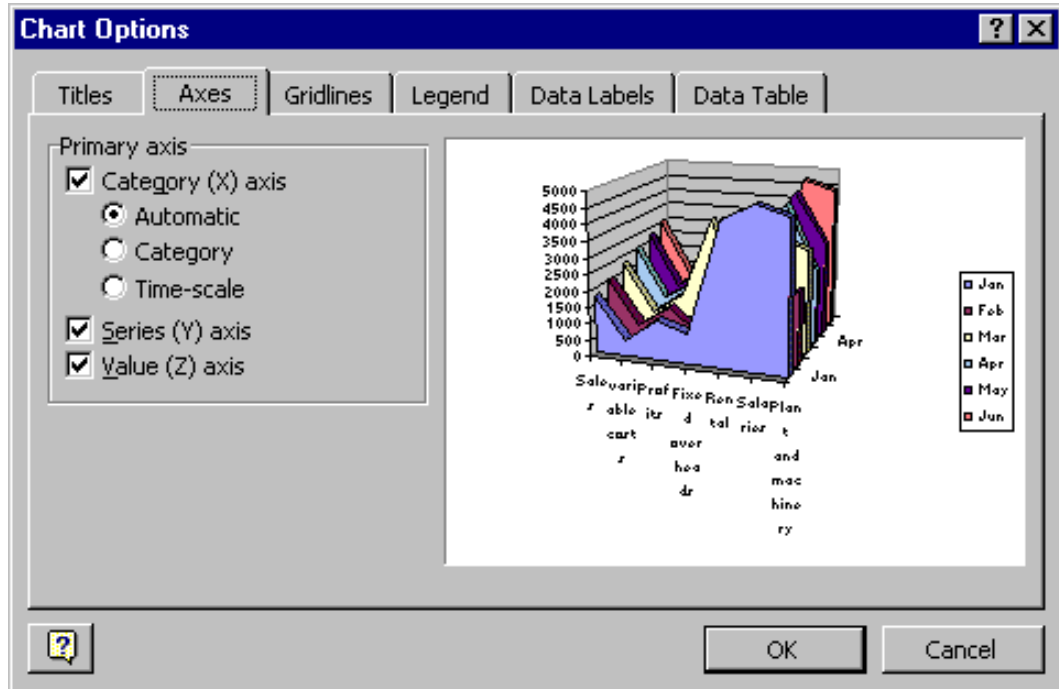
To add chart elements:

Mouse

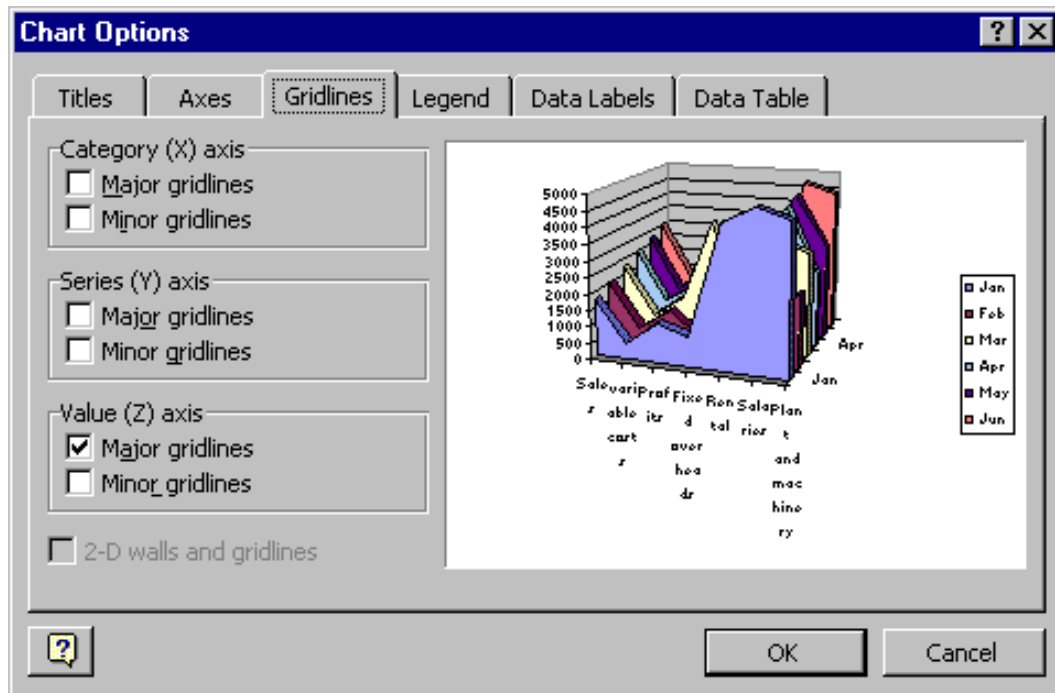
1. With the chart selected, choose Chart from the menu bar, then Chart Options.



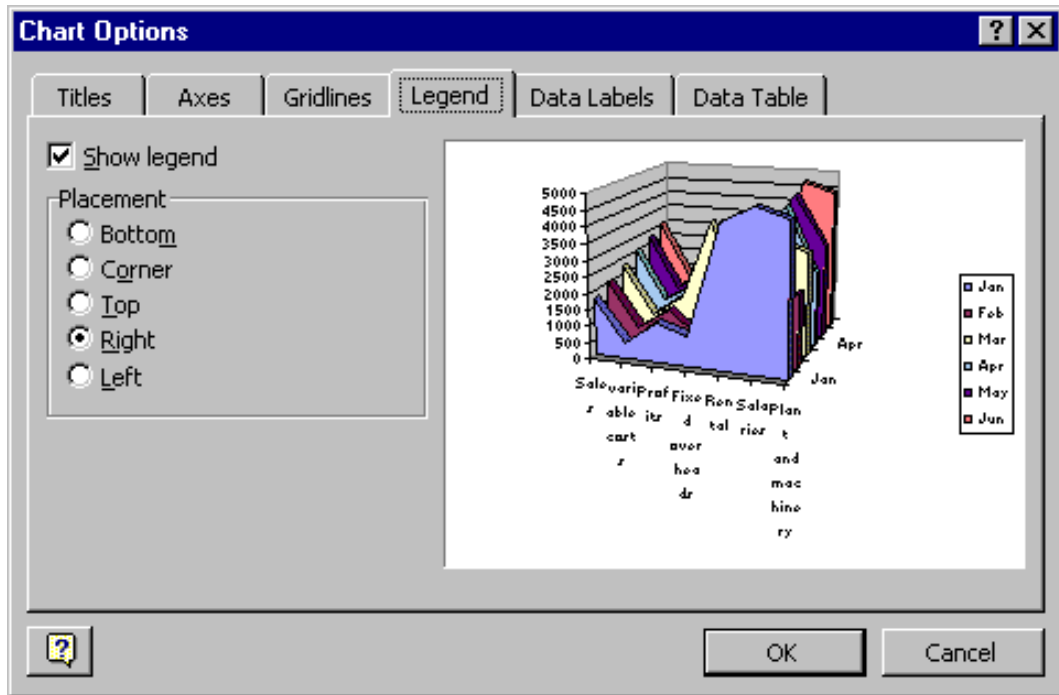
2. Use the Titles tab to specify which titles you want attached to the chart itself and the various axes.



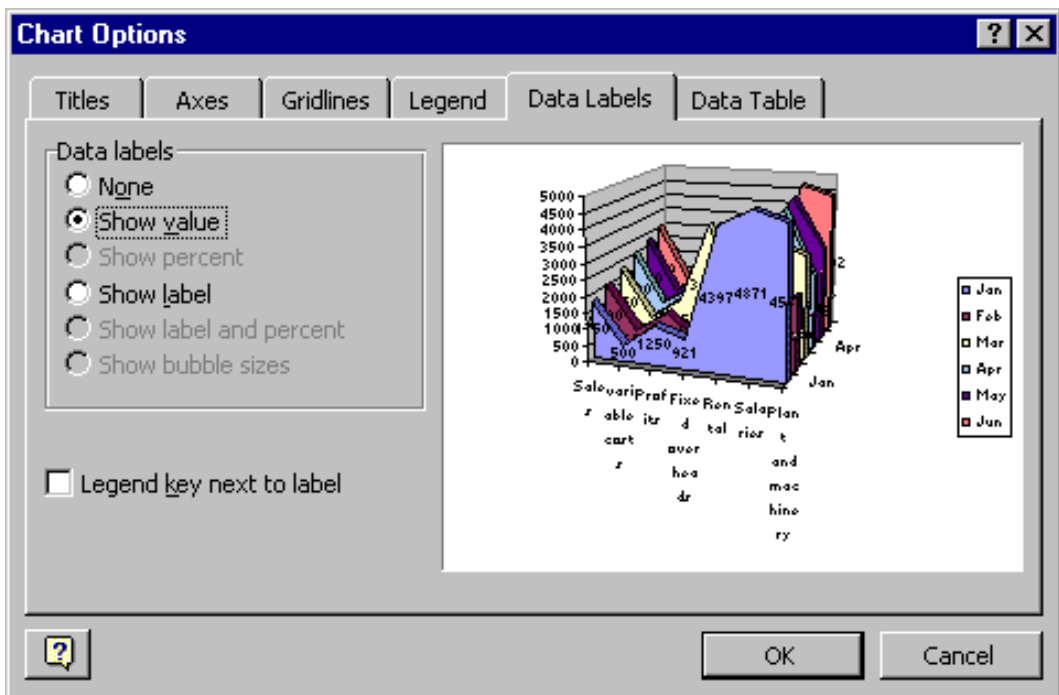
3. Use the Axes tab to add or remove axes, or to change the format of the category axis if you want a timescale.



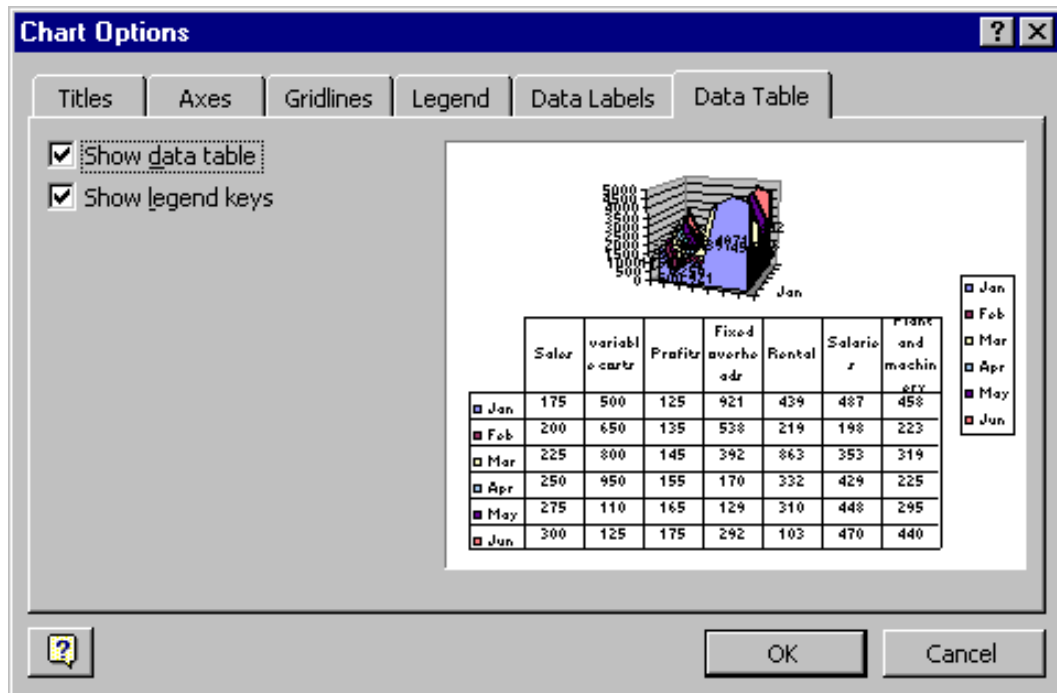
- Use the Gridlines tab to add the horizontal and/or vertical lines to your chart. These can be useful in helping you to distinguish the exact values of the data markers or separate the categories.



5. Use the Legend tab to switch the Legend on and off and change its position.



6. Use the Data Labels tab to write the values or the labels on the data markers.




7. Use the Data Table tab to add the plot data so that it is visible on the chart itself.
8. When all options have been set, click OK.

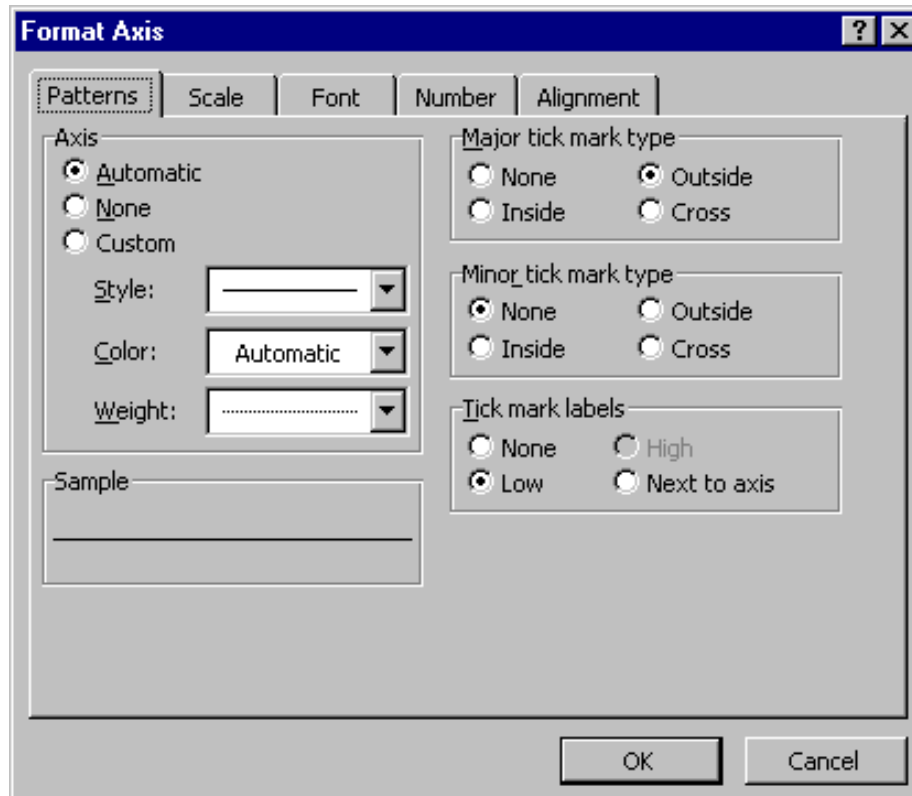
Formatting Axes

The axes can be formatted to appear in different ways, or the scales of the axes can be changed.

To format the Category (X) Axis:

Mouse

1.  Use the drop-down list of elements on the Chart Toolbar to select "category axis".
2. Click the Format selected chart element button from the Chart toolbar. The following dialog box appears:

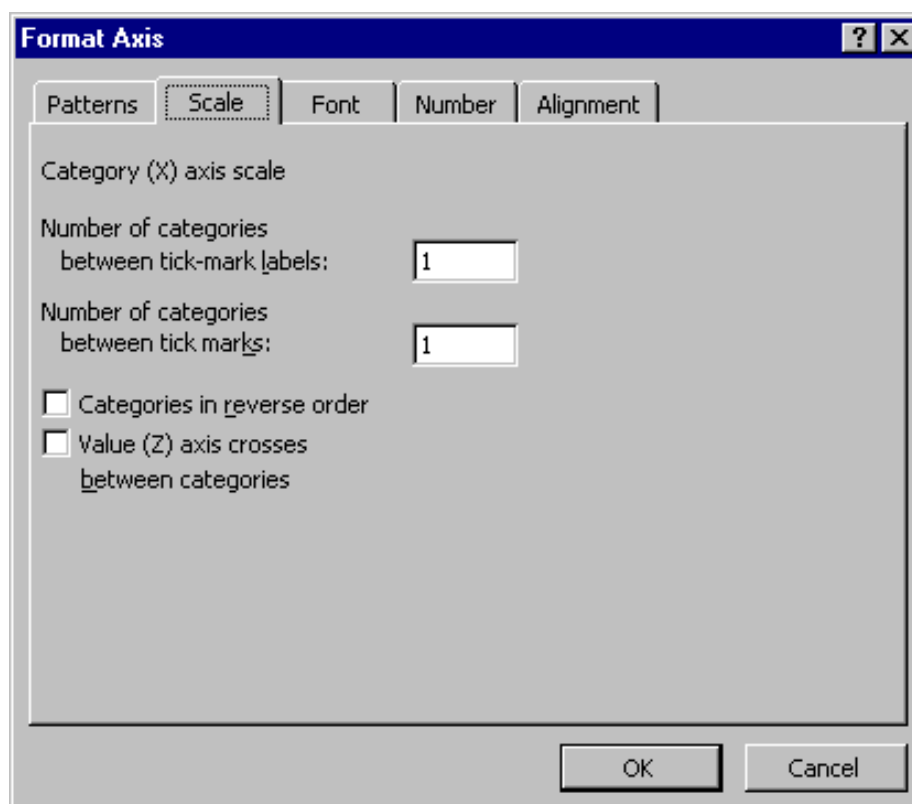


- From the Patterns tab, you can affect the line displayed on the selected axis. Automatic will apply the default thin black line. Custom will allow you to define the Style, Colour and Weight of the line. The option for None will suppress the axis from showing.

Under Tick Mark Type, you may click on the appropriate option button to specify that tick marks on the axis will appear on the inside or outside of the axis line, cross the axis line, or not appear at all. Minor tick marks can also be included (click on the Scale... button to set the intervals for major and minor tick marks).

The Tick Labels section allows you to dictate where the Labels associated with the selected axis will display. This can be at the High Values end of the axis, the low values end of the axis, next to the axis, or completely suppressed.

- Use the Scale tab to specify at where the value axis will appear, which categories are labelled, and how many categories will appear between each pair of tick marks.



A series of check boxes [•] allows you to dictate whether or not the Value Axis crosses between categories. The default setting is to have this box checked, which produces a Value Axis at the edge of a given category. Unchecking this box will result in a Value Axis which cuts down the middle of a category. This will also affect the location of tick marks on the axis. Categories may be displayed in reverse order if desired, and the Value Axis may be required to cross at the last plotted category on the chart.

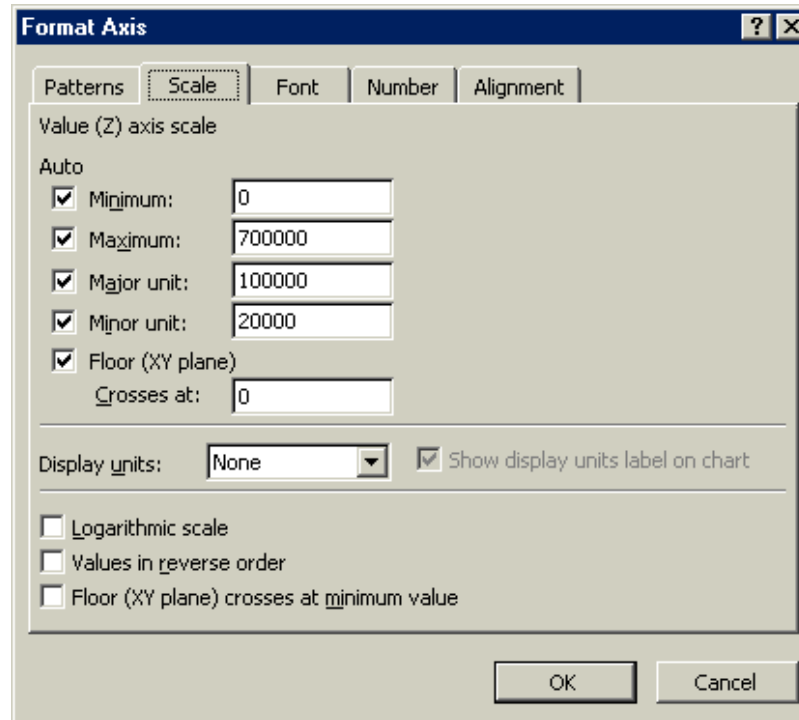
- Use the Font tab to specify font formatting for the axis labels.
- Use the Number tab to specify number formatting for the axis labels.

7. Use the Alignment tab to specify the orientation of the category labels.
8. When all options have been set, click OK to apply them to your chart.

To format the Value (Y) axis:

Mouse

1. Follow steps described above for the category axis.
2. The Scale tab will have different options relating to the values on the axis.

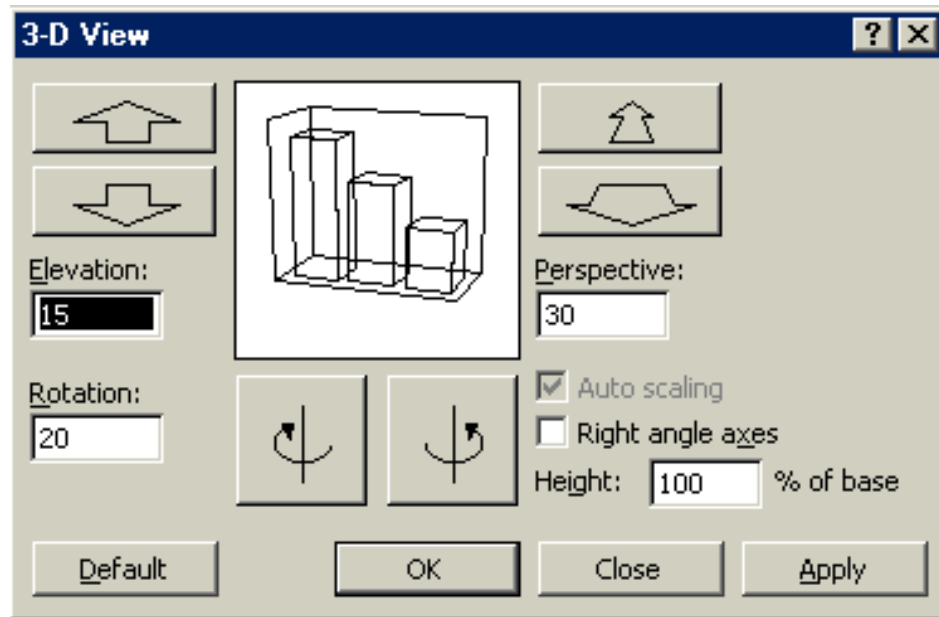


From the Scale tab, you may specify the Minimum and Maximum values to appear on the axis. The intervals to be used as Major and Minor units on the axis may also be set. You may dictate the point at which the value and category axes cross, whether or not the axes are plotted on a Logarithmic Scale, or whether to have the values plotted in Reverse order.

3-D Chart Formatting Options

There are several formatting options which are particular to 3-dimensional charts. While working on a 3-D chart, many settings can be adjusted by accessing the Format, 3-D View option from the menu bar.

Depending on the data being displayed, some data markers on a 3-D chart may be obscured. It is possible to adjust the view so that your data may be seen to its best advantage. You may influence the degree of elevation, perspective, or rotation of your chart. A sample chart within the 3-D view dialog box reflects the new views as you change these factors.



Elevation, Rotation and Perspective (if it is available) can be adjusted either by typing values into the appropriate sections within the dialog box, or by clicking on the arrow buttons displayed around the sample chart. The latter technique is obviously easier.

Elevation

Elevation dictates the height from which you view the data. Ranging from 90°(above the plot area) to -90°(below the plot area), where 0° represents a view level with the centre of the plot area. With 3-D Pie Charts, the range varies from 10°, almost level with the edge of the pie, to 80°, looking down on the surface of the pie.

Rotation

Rotation allows you to turn the graph on its vertical axis. The range goes from 0° to 360°, where zero views the chart from the front, 90° would view it from the side, and 180° would allow you to see it from the back - effectively reversing the order of the data series for the chart display.

Perspective

Perspective can be changed to make the data at the back of a 3-D chart appear more distant. A perspective of zero means that the farthest edge of the chart will appear as equal in width to the nearest edge. Increasing perspective (up to a maximum of 100) will make the farthest edge appear proportionally smaller.

You may also affect the height of the graph in relation to its width and whether or not you want the axes to remain at right angles. This latter setting would preclude the use of perspective in 3-D charts. Auto-scaling allows Excel to scale a 3-D chart so that, where possible, it is similar in size to its 2-D equivalent.

To format the 3-D view:

Mouse

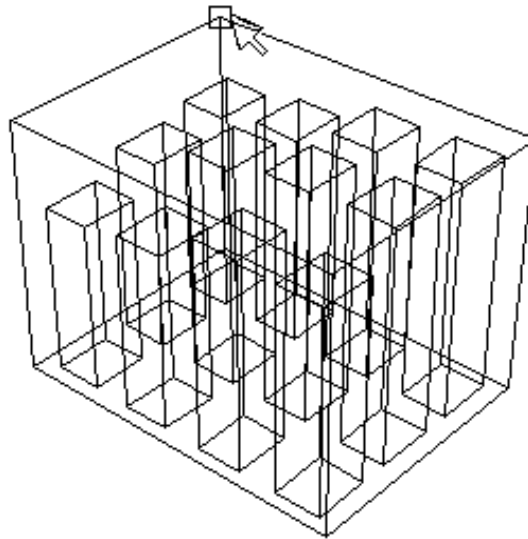
1. Choose Chart from the menu bar, then 3-D view.
2. Select the appropriate options.
3. Choose Apply to apply your changes to your chart but keep the dialog box visible for more changes.

Or

Click OK to close the dialog and apply your changes.

The rotation and elevation of a 3-D chart can also be adjusted manually.

To adjust rotation and elevation manually:



Mouse

1. Select any corner of the chart (the reference area should display the word “Corners”). Black selection handles should now appear.
2. Drag one of the selection handles to a new position. Excel will display a 3-D framework indicating the new chart aspect. Release when the desired display has been achieved.

4.7 Manipulating Chart Data

Delete a Series Manually

It is possible to delete a series from a chart simply by selecting it, then pressing the delete key.

To delete a data series:

Keyboard

1. Select the series you wish to delete.
2. Press [DELETE].

Add a Series Manually

A series may be added to a chart

To add a new data series to a chart:

Mouse

1. Select the worksheet cells containing the relevant data (including the label to be used if labels were included in the original data).

2. Copy this data to the clipboard in the usual way.
3. Activate the chart by clicking on it and choose Edit, Paste. The data series will appear in the chart.



The Series Function

If a data series on a chart is selected, the reference area will display the underlying formula. It can be useful to know what elements go to make up the Series function, as you may edit it manually if desired. The Series function includes four arguments:

```
=SERIES(Series_Name,Categories_Ref,Values_Ref,Plot_Order)
```

The Series Name can be a reference (Worksheet!Cell) to the cell where the name of this particular data series is being held, or it may consist of text typed in by you and enclosed in quotation marks. The Series Name will be picked up in the legend to describe the data series.

The Categories Reference refers to the worksheet name and range of cells where the Category (or x-axis) labels are to be found. If the data series are in rows, the category references will refer to the labels at the top of each column and vice versa.

The Values Reference refers to the worksheet name and the range of cells containing the actual values for this data series which are to be plotted on the y-axis (or z-axis on a 3-D chart).

The Plot Order number dictates the order in which the selected data series is plotted on the chart and listed on the legend.

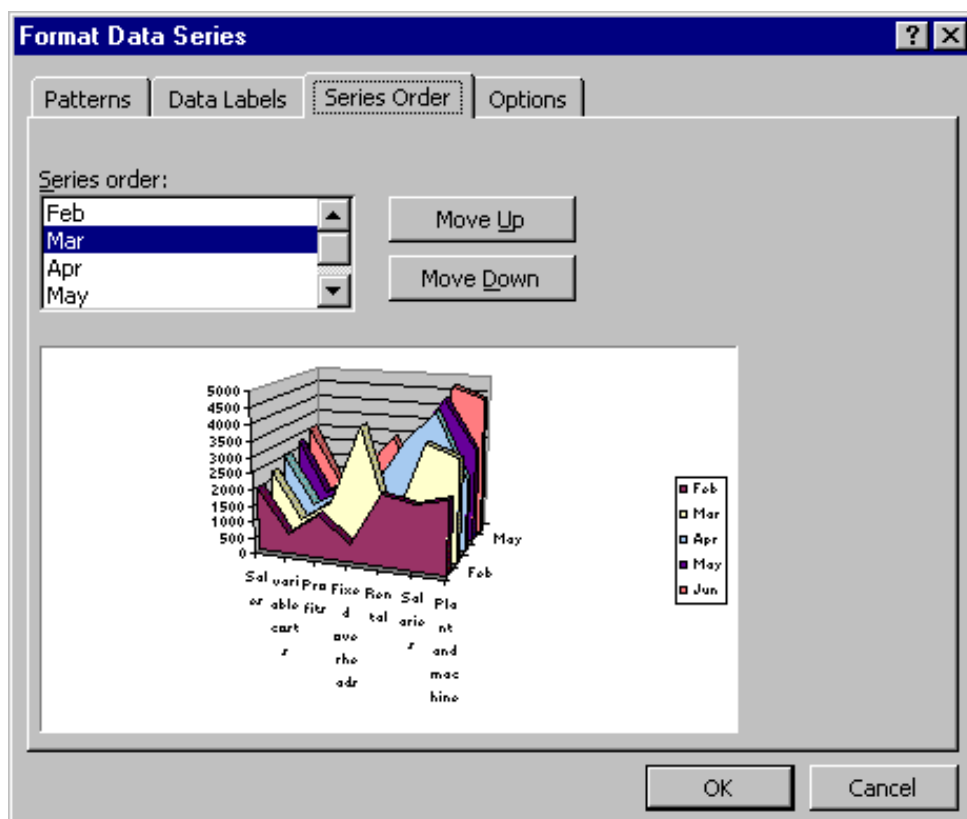
Often, instead of amending the Series function manually, you may find it easier to edit a data series using the menu option covered in the next section.

Chart, Edit Series

To change a series plot order:

Mouse

1. Select any series on the chart
2. Click the Format selected chart item button on the Chart toolbar. The following dialog box will appear:



3. Click the Series Order tab.

4. Click on the series name whose order you want to change.
5. Click the Move Up or Move Down buttons to change the order of the selected series.
6. Click OK to close the dialog and apply the new order.

Changing the series properties

Name

On an existing series, the default setting will be a reference to the worksheet name and cell reference where the name of the current data series is to be found. This name will also be reflected in the legend. This relates to the Series Name section of the SERIES function. You can override the settings for the series manually.

If the worksheet containing the source data is open, clicking on the button on the right of the text box will activate the underlying worksheet where the referenced area will be surrounded by a marquee. You may choose to drag over a different area in the worksheet, (the dialog box will remain on top of other windows) or may choose to type in text describing the data series instead. If this is done, the SERIES function underlying the selected data series will adjust to reflect the change.

Category X axis Labels

This section corresponds with the Category Reference section of the SERIES function. It will reference the worksheet name and range of cells where the category or x-axis labels are to be found. If the worksheet containing the source data is open, clicking on the button to the right of this text box will activate the underlying worksheet where the referenced area will be surrounded by a marquee. If you wish to amend the references, it is possible to drag over a new area on the worksheet (the dialog box will remain on top of other windows), or to type in the desired references manually.

Values

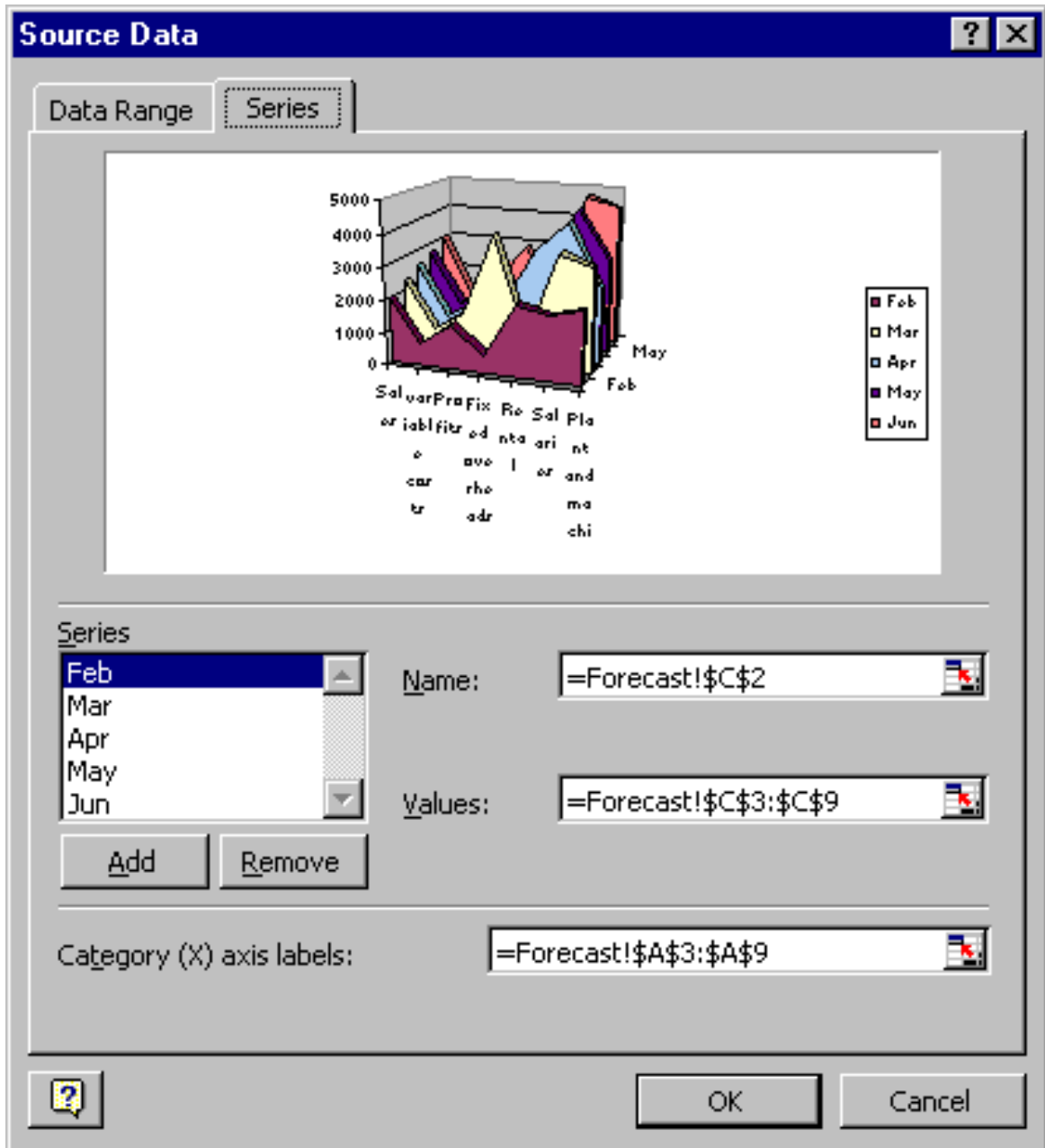
(Note: If you are working on a 3-D Chart, the y-axis will be assigned the series name, and values will be plotted on the z-axis.)

This text box corresponds with the Value Reference section of the SERIES function. It will reference the worksheet name and range of cells where the actual values to be plotted on the y-axis may be found. If the worksheet containing the source data is open, clicking on the button to the right of this text box will activate the underlying worksheet where the referenced area will be surrounded by a marquee. If you wish to amend the references, it is possible to drag over a new area on the worksheet, or to type in the desired references manually.

To change series properties:

Mouse

1. Choose Chart from the menu bar, then Source Data. The following dialog box will appear:



2. Ensure the Series tab is selected. Select the series whose properties you want to change.
3. Use the Name text box either to select a cell containing or type a new name for the series.
4. Use the Values text box to select the cells on the worksheet that contain the values to be plotted on the chart for the selected series.
5. Use the Category X-Axis labels text box to select the cells on the worksheet containing the items you want as labels on the category axis.
6. When all options have been set, click OK.

Charting with Blocks of Data

As it is possible to select separate ranges in Excel, it is possible to produce charts based on non-contiguous data. This is vital if some of the information on the worksheet is to be omitted. There are some guidelines to be aware of however. The layout of data is important as was demonstrated at the beginning of this document. The selected ranges must amount to a regular block with consistent height and width measurements so that Excel can interpret it correctly, with categories and data series matching up.

Once the data has been successfully selected, choose File, New and click on Chart before clicking on OK, or tap [F11].

An extension of this idea leads to the fact that ranges from separate worksheet files can be included in a single chart. Simply select the worksheet data to be included (subject to the layout provisos above), copy to the clipboard then paste them into the chart.

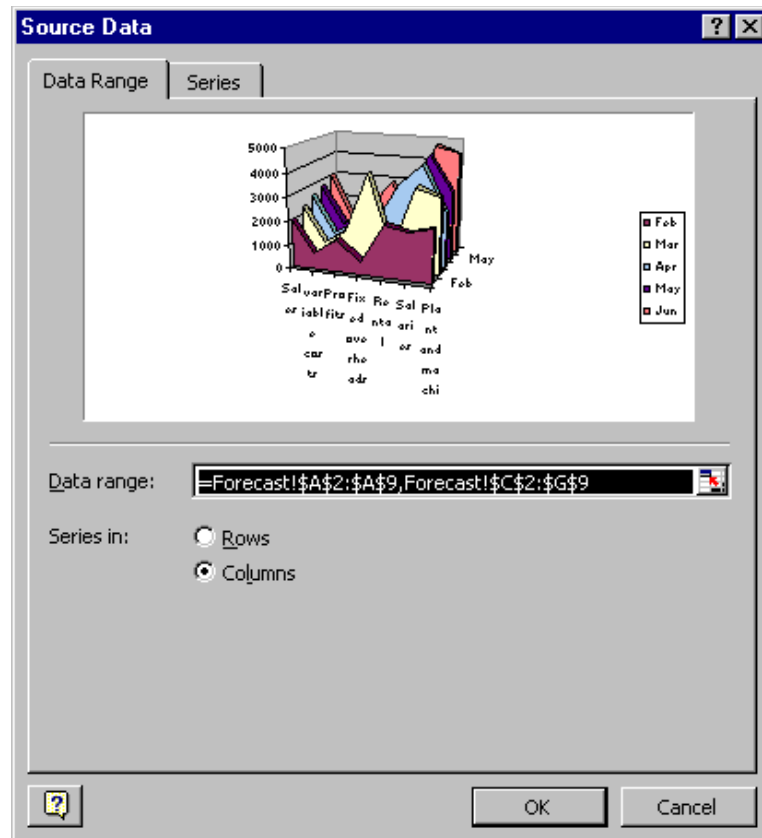
Swapping the x and y axes

It has been seen that Excel will assign either rows or columns of data to be categories (as opposed to data series) on the assumption that there will be more categories than data series in the chart. Frequently this will produce satisfactory results, but there may be times when you wishes to override Excel's decision.

To swap the x and y axes:

Mouse

1. Select the chart.



7. Choose Chart from the menu bar, then Source data.
8. Ensure the Data Series tab is selected.
9. Click the Rows or Columns option button (depending on what the current orientation is) to change the order in which the items are plotted.
10. Click OK to confirm your changes.

Using Charts to change Data

Another interesting aspect to Excel Charts hinges on the fact that a chart is linked to its source data. You will probably have observed that changing a figure in a supporting spreadsheet will affect a dependent chart. The marker representing that figure will adjust to reflect the new value.

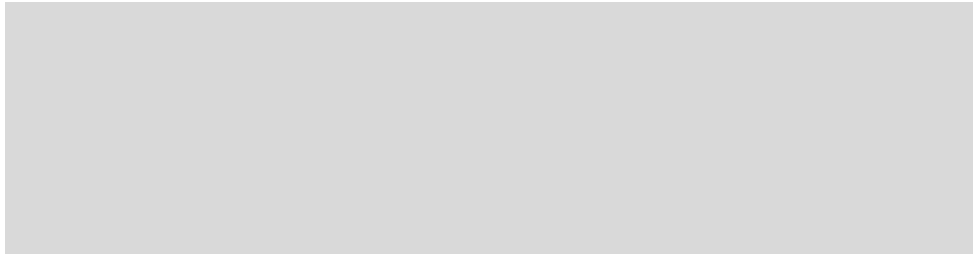
On a 2-dimensional chart this can be turned around to allow you to adjust a marker and have the worksheet figure update automatically.

To change the value of a data marker:

Mouse

1. Hold down [CTRL] and click on the data marker (bar, column etc.) to be adjusted.

2. A black selection handle will appear on the marker. Drag this to a new position, and while doing so, a moving tick mark on the y-axis indicates the current value. This will also be reflected in the reference area.
3. Release the marker at the new position and the relevant figure in the worksheet will update.



Picture Charts

It is possible to substitute pictures or symbols representing data for the usual Excel chart markers. You may use ready-made bitmap files, or may choose to draw his or her own pictures for use in the chart. Any picture which can be copied to the clipboard may be used for Picture Charts.

Create a Picture Chart

In order to create a Picture Chart, you should start by preparing a 2-D column, bar or line chart in the usual way.

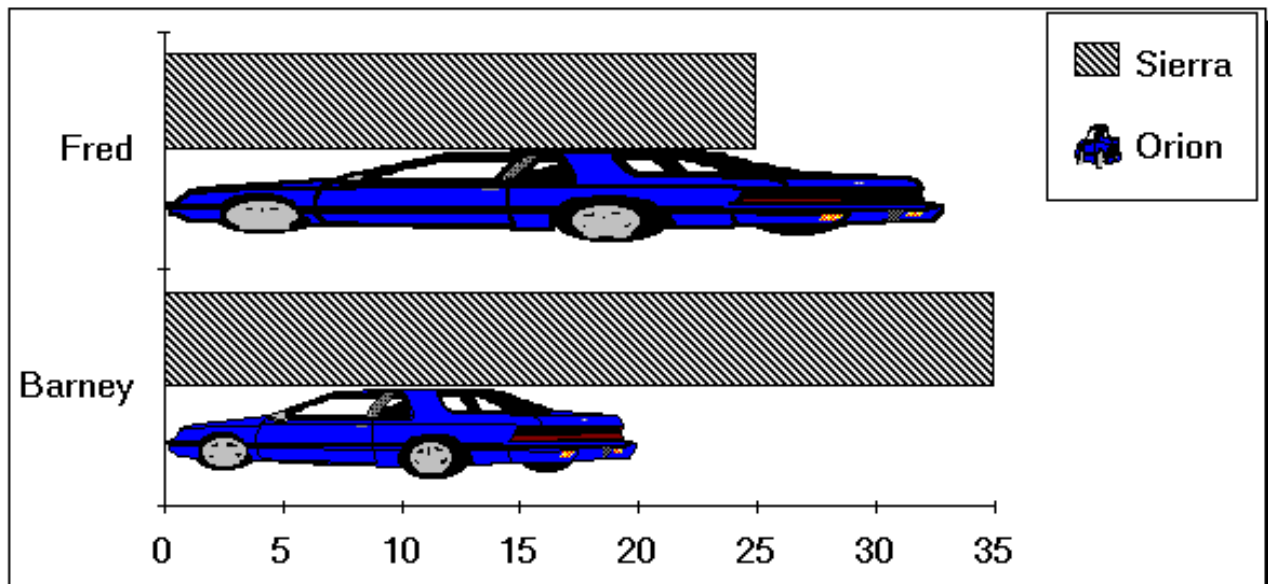
To replace data markers with pictures:

Mouse

1. Select the data series whose markers you want to replace with pictures.
2. Choose Insert from the menu bar, then Picture, From File.
3. Excel will offer you a file open dialog. Point Excel to the ClipArt folder.



4. Select the picture you want to use and click OK. The picture will appear in place of the previous data marker.

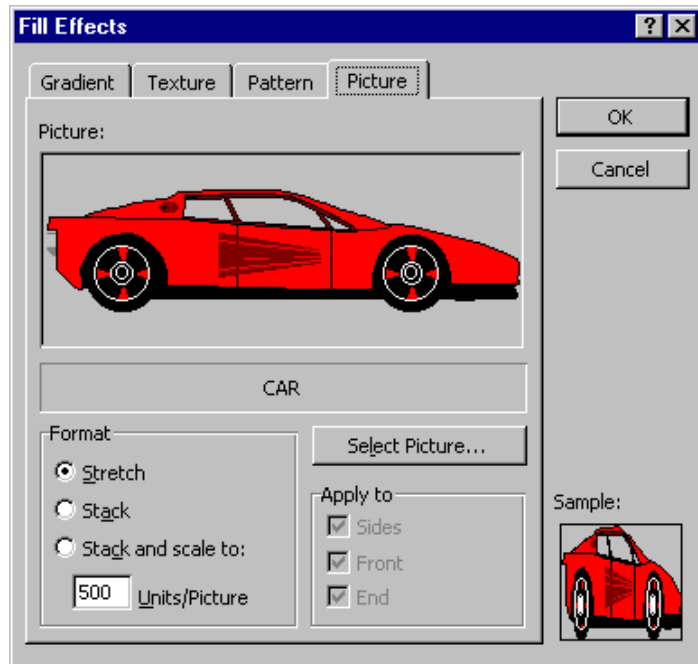


If the picture is being pasted into a column or bar chart, it tends to stretch out to the same size as the column or bar which it is replacing. This frequently results in distortion. You may adjust this as necessary and the process for doing so is described over the page. **Formatting the Picture Chart**

To format the picture settings:

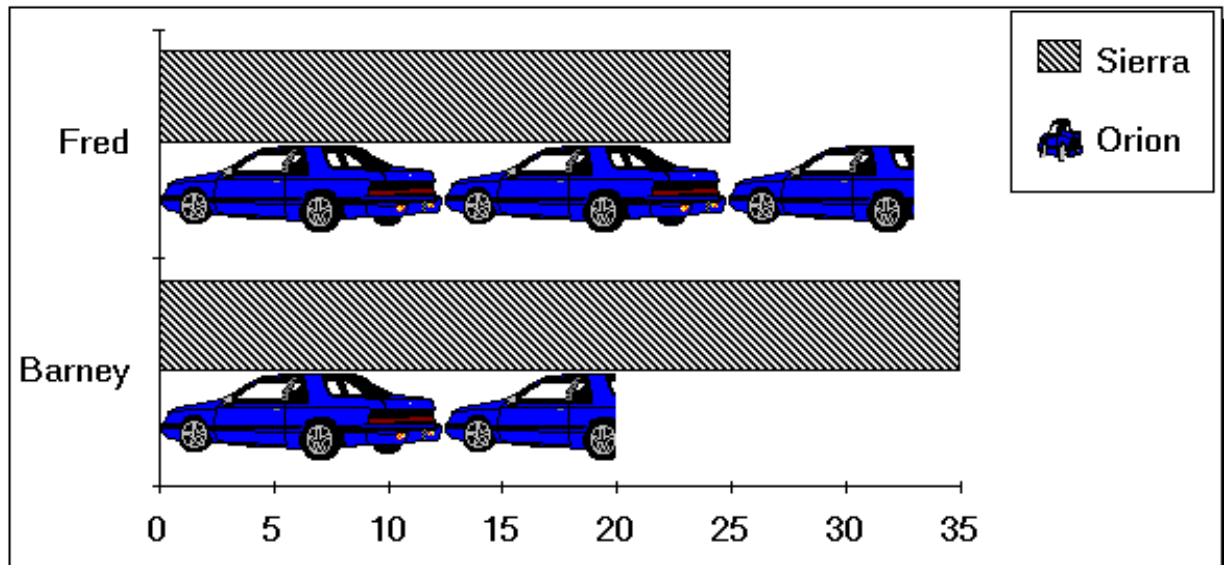
Mouse

1. Select one of the pictures by clicking on it.
2. Choose Format from the menu bar, then Selected data series.
3. From the resulting dialog box, ensure that the Patterns tab is selected and click Fill Effects.



4. Ensure the Picture tab is selected.
5. Use the Format options to adjust whether the picture stretches to the value of the plot point, (Stretch) or whether you want to stack miniaturised pictures 1 to 10 units (Stack and Scale).
6. When the desired effect has been achieved, click OK.

If the Stretch option button is selected, this indicates that the picture is sizing itself to reflect the appropriate data. You may choose the Stack option to have the picture appear in its original size and stack copies to represent the value for each data point. Stack and Scale will allow you to define precisely how much data is represented by each stacked picture.



Remove Pictures from Chart

In order to revert to the normal chart markers, simply select the data series with pictures and format the patterns back to a colour.

Useful Information

You can copy and paste any chart created in Excel into a Word document or a PowerPoint slide.

.Notes

5 Templates

Objectives

By the end of this section you will be able to:

- Use the standard Excel templates
- Create Custom templates
- Open and edit templates
- Set template properties

5.1 Introduction to templates

A template is a file used as a form to create other workbooks, sheets and charts. New workbooks created from the template contain the same layout, data, formulae, formats and styles as those of the template. New sheets and charts inserted into a workbook are a copy of the sheet or chart template.

Standard templates

Excel comes supplied with a selection of templates designed to help in the production of common business and home financial tasks. These templates can be modified for personal use.

To use a standard template:

Mouse

1. Choose File from the menu bar, then New. Then select from the general templates hyper-link on the task bar.
2. Click the Spreadsheet Solutions tab to see a list of Excel templates.
3. Double-click on the icon for the template you wish to base the new workbook on.

Custom templates

You can create your own workbook and sheet templates.

To create a workbook template:

Mouse

1. Open or create the workbook to be used as the basis for the template.
2. Choose File from the menu bar, then Save As.
3. Type the template name in the File name text box.
4. Select Template from the Save as Type list. An .XLT extension will be added to the template name.
5. The folder where the file will be stored will automatically change to Templates. By storing all .XLT files in the same folder Excel recognises and keeps track of templates.
6. Click OK to save the template.

To create a worksheet template:

Mouse

1. In a new or existing workbook delete all the sheets except the one to be used as the template.
2. Choose File from the menu bar, then Save As.
3. Type the template name in the File Name box.
4. Select Template from the Save as Type list. An .XLT extension will be added to the template name.
5. The folder where the file will be stored will automatically change to Templates. By storing all .XLT files in the same folder Excel recognises and keeps track of templates.
6. Click OK to save the template.

To base a new workbook on a template:

Mouse

1. Choose File from the menu bar, then New
2. The dialog box containing Excel's own templates should now list any custom templates that you have created.
3. Click the icon for the template that you want to base the new workbook on.

To add a worksheet based on a sheet template:

Mouse

1. Click the right mouse button over a sheet tab and choose Insert.

2. Double-click the icon for the worksheet template you want to base the new sheet on.

Autotemplates

An autotemplate is a workbook saved as a template in the XLSTART folder or alternate startup folder using the specific filename Book.xlt, sheet.xlt, dialog.xlt or macro.xlt. Autotemplates if they exist will act as the basis for all new items you create in the Excel environment.

The Book.xlt template becomes the default workbook. The Sheet.xlt template becomes the default worksheet.

Opening and editing templates

Templates are files just like workbooks. If you need to change a template in any way, simply open, edit and save in the normal way.

To open a template:

Mouse

1. Choose File from the menu bar, then Open.
2. Change the Look In location to the Templates folder.
3. Double-click the name of the template you want to open.

To edit a template:

Mouse

1. Make changes in the open template.
2. Choose File from the menu bar, then Save.

Template properties

Files have various properties that are saved with them. Some properties, such as date created and last saved date are included and updated automatically by Excel. Others, such as title and subject must be entered manually by the user. Properties are helpful when trying to locate files as you can use the properties to search.

To set template properties:

Mouse

1. With the template open click File, Properties.
2. Set the properties that apply to the template.
3. Click OK.

Useful Information

Templates can contain custom number formats and predefined styles.

.Notes

6 Auditing

Objectives

By the end of this section you will be able to:

- Use and understand tracers
- Insert and use cell comments
- Use validation circles
- Use go to special

6.1 Auditing features

Tracers

The precedent, dependent and error tracers display arrows on the worksheet to represent the flow of computations:

Tracer Type	Arrow type
Formula	Solid blue
Error	Solid red
External reference or reference to other worksheet	Dashed black with an icon

Comments

Comments are text or audio messages attached to cells usually giving a more detailed explanation of a cells contents.

Validation circles

Validation circles are used to identify all cells that contain values that are outside the limits set by using the Data, Validation menu option.

Go to Special

A method of selecting cells with particular contents or properties.

6.2 Precedents and Dependants

Precedents are cells referred to by other formulae. Dependants are cells containing formulae that refer to other cells.

A direct precedent is a cell referred to by the formula in the active cell. An indirect precedent is a cell referred to by a formula in a direct precedent cell or another indirect precedent cell.

A direct dependant is a cell containing a formula that refers to the active cell. An indirect dependent is a cell that contains a formula that refers to a direct dependant cell or another indirect dependant cell.

You use the Auditing toolbar to set auditing options.

To view the Formula Auditing toolbar:

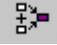
Mouse

1. Choose Tools from the menu bar, then Auditing, Show Auditing toolbar.



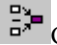
To audit for direct and indirect precedents:

Mouse

1.  Click on the cell you want to audit.
2. Click the trace precedents button on the Auditing toolbar.

To audit for direct and indirect dependants:

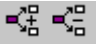
Mouse

1.  Click on the cell you want to audit.
2. Click the trace dependants button on the Auditing toolbar.




To remove the tracer arrows:

Mouse

1.  Click the remove precedent arrows to remove precedent tracers or remove dependant arrows to remove dependant tracers.

Or

1.  Click the remove all arrows button to remove both precedent and dependant tracers.

6.3 Comments

When a cell has a comment attached, Celltips automatically display the comments added when the mouse pointer rests over the cell. You can tell which cells have comments attached as they have a comment indicator (a small red corner triangle).

To add a comment:

Mouse

1. Click in the cell where you want to insert a comment.
2. Choose Comment from the Insert menu.
3. In the text box, type your comment.
4. Click outside the text box to confirm the entry.

To view comments:

Mouse

1. Position your mouse over the top of the cell that contains the comment.
2. Your comment will be displayed as a celltip.

To format comments:

Mouse

1. Click the right-mouse button over the cell containing the comment to format.
2. Choose Show comment from the shortcut menu
3. Choose Format from the menu bar, then comment to change the font or the colour of the comment.

To edit comments:

Mouse

1. Click on the cell that contains the comment you want to edit.
2. Choose Edit Comment from the Insert menu.
3. Click outside the comment box when you have finished.

Hiding and redisplaying comments:

Mouse

1. You can hide an individual comment by clicking the right mouse button over the cell that contains the comment and choosing Hide comment from the shortcut menu.
2. When you want to redisplay all individually hidden comments. Choose View from the menu bar, then Comments and repeat.

To print comments:

Mouse

1. On the File menu, choose Page Setup and click the Sheet tab.
 2. In the Comments box, choose At end of sheet
- Or


Choose As displayed on sheet


1. Click OK.

Reviewing comments:

Mouse

1. Choose Comments on the View menu

2.  To view each comment in sequence click the Next Comment button on the Reviewing toolbar.

3.  To view the comments in reverse order, click the Previous Comment button on the Reviewing toolbar.

Useful Information

Auditing options can also be set using the Tools menu.

.Notes