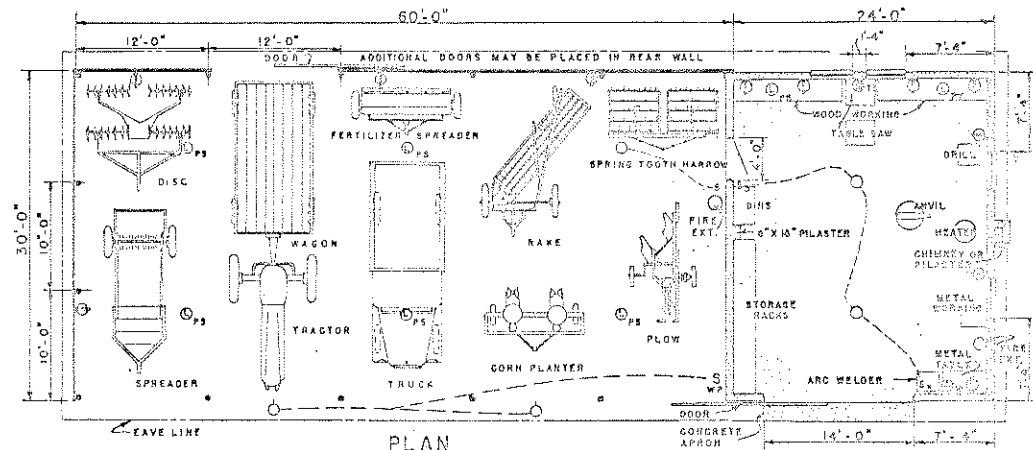


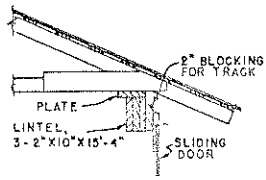
PERSPECTIVE VIEW



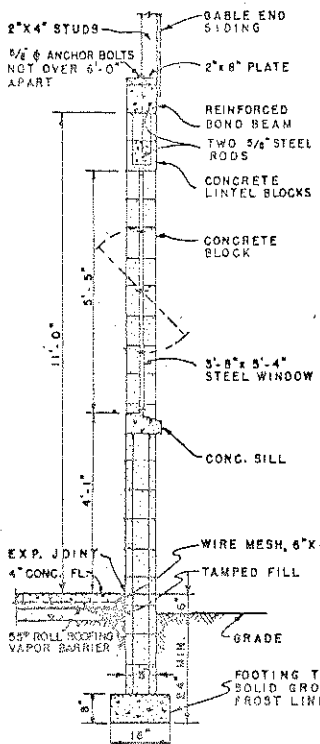
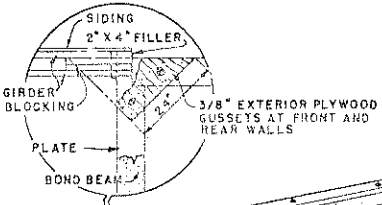
PLAN

WIRING LEGEND

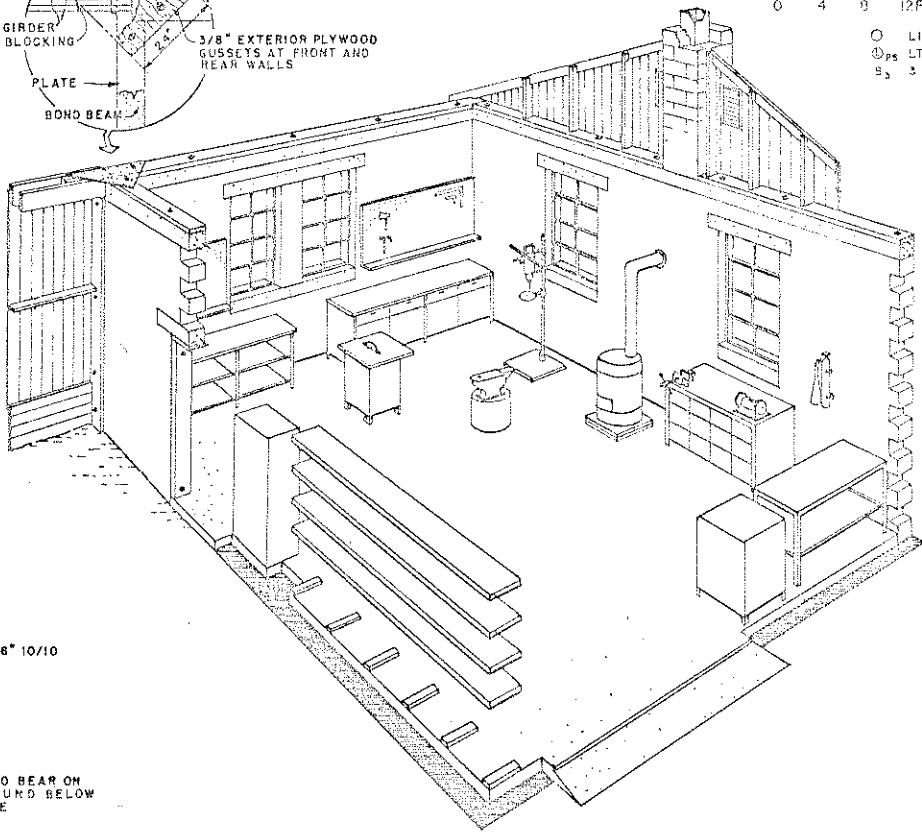
- LIGHT OUTLET
- ⊕ LT. WITH PULL SW.
- ⊕₃ 3 WAY SWITCH
- ⊕₂ DUPLEX OUTLET
- ⊕_W WELDER OUTLET
- ⊕_{TS} TABLE SAW OUTLET
- ⊕ SINGLE POLE SWITCH
- ⊕_{WP} WEATHERPROOF SW.



DETAIL AT LINTEL OVER SHOP DOOR



TYPICAL SECTION (END WALL OF SHOP)



A TYPICAL SHOP ARRANGEMENT

LIST OF MATERIALS

THIS LIST OF MATERIALS IS PREPARED FOR ESTIMATING PURPOSES. IF USED FOR THE PURCHASE OF MATERIALS, THE QUANTITIES SHOULD BE VERIFIED BY THE BUILDER.

ITEM	UNIT	QUAN.
CONCRETE:		
FOOTING 1:3:5 MIX	CU. YD.	3.8
FLOOR, APRON, BOND BEAM ETC. 1:2:4 MIX	CU. YD.	11.1
BLOCK 8"X8"X16"	EACH	14.6
8"X8"X8"	EACH	8.3
BLOCK LINTEL 8"X8"X16"	EACH	2.1
FLUE LINING 8"X8"X24"	EACH	6
MORTAR 1:3 MIX	CU. YD.	1.2
EXPANSION JOINT 1/2"X4"	LIN. FT.	10.6
VAPOR BARRIER-ROLL ROOFING 55LB.	ROLLS	7
REINFORCING STEEL-WIRE MESH 6"X6" 10/10	SQ. FT.	670
STEEL RODS 3/8" X 16'-0"	EACH	11
5/8" X 14'-0"	EACH	5
ANCHOR BOLTS 3/8" X 24"	EACH	27
STEEL BASH 3'-5" X 5'-5" (APPROX.)	EACH	4
METAL LOUVERS	EACH	2

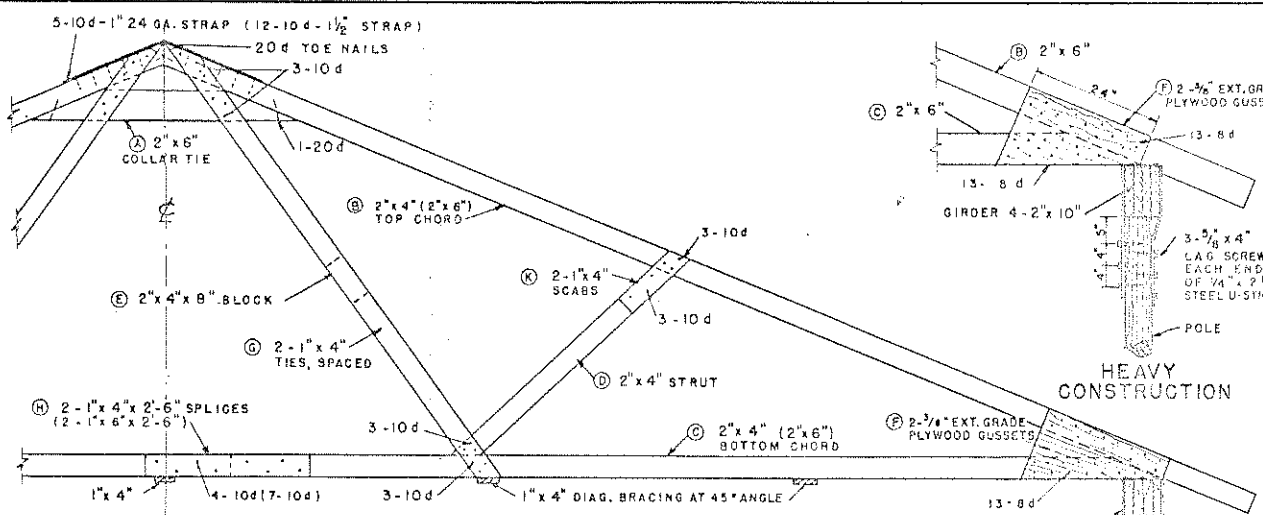
(CONTINUED ON SHEET 2)

THIS BUILDING IS INTENDED PRIMARILY FOR USE IN AREAS NOT SUBJECT TO HIGH WINDS OR SNOW LOADS IN EXCESS OF 10 LBS. PER SQUARE FOOT. IN LOCALITIES WHERE WINDS OF HURRICANE FORCE (OVER 75 m.p.h.) OR SNOW LOADS UP TO 20 LBS. PER SQUARE FOOT MAY BE EXPECTED, USE THE MEMBER SIZES AND FASTENINGS SHOWN IN PARENTHESES (---) AS WELL AS THE OTHER DETAILS FOR HEAVY CONSTRUCTION.

COOPERATIVE EXTENSION WORK IN
AGRICULTURE AND HOME ECONOMICS
 DEPARTMENT OF AGRICULTURAL ENGINEERING
UNIVERSITY OF MARYLAND
 AND
 UNITED STATES DEPARTMENT OF AGRICULTURE COOPERATING

MACHINERY STORAGE & SHOP

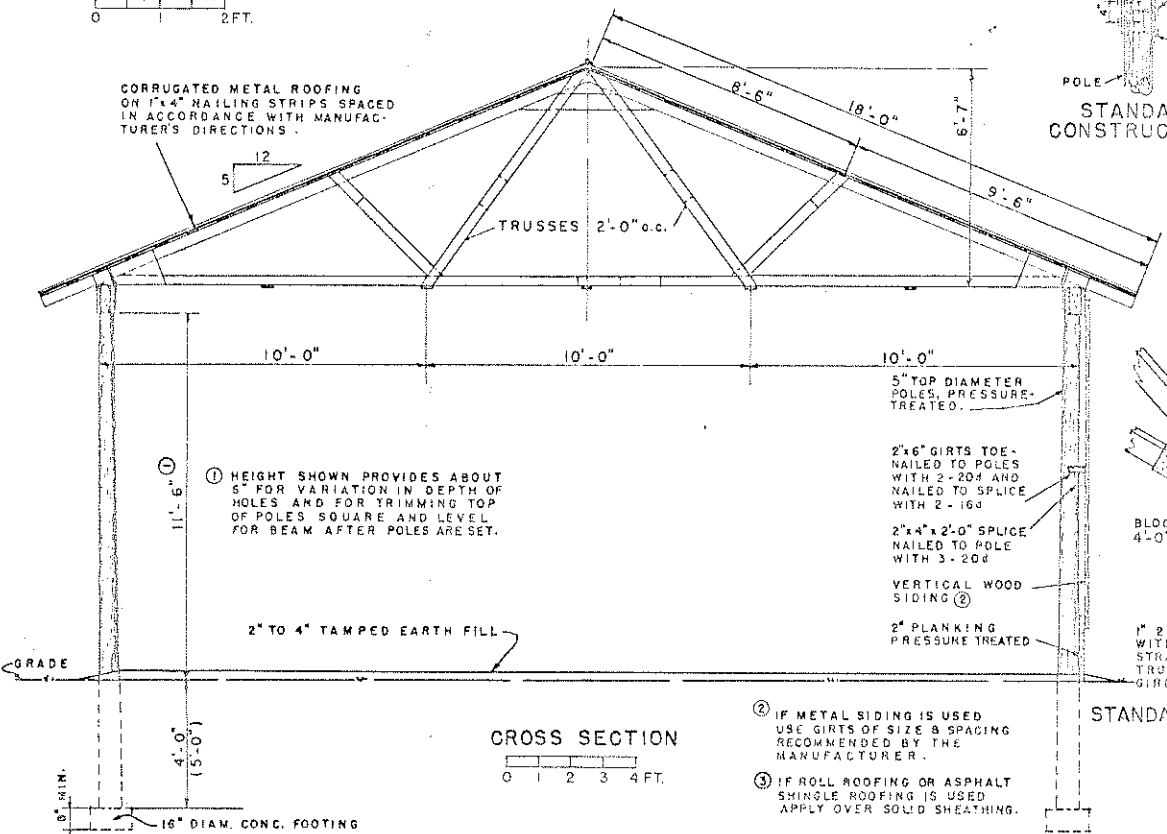
USDA '57 EX. 5849 SHEET 1 OF 1



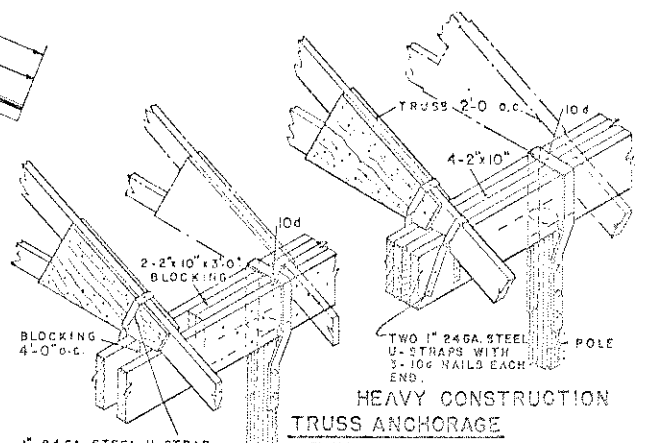
TRUSS DETAIL
0 2 FT.

LIST OF MATERIALS
(CONTINUED FROM SHEET NO. 1)

ITEM	STANDARD		HEAVY	
	SIZE	PCS.	SIZE	PCS.
TRUSSES (TOTAL 42)				
(A) COLLAR TIE	2" x 6" x 14'-0"	11	2" x 6" x 12'-0"	11
(B) TOP CHORD	2" x 4" x 18'-0"	84	2" x 6" x 18'-0"	84
(C) BOTTOM CHORD	2" x 4" x 14'-0"	42	2" x 5" x 14'-0"	42
(D) STRUT & (E) BLOCK	2" x 4" x 10'-0"	42	2" x 4" x 10'-0"	42
(F) GUSSET	4'-0" x 8'-0" x 3/4"	11	4'-0" x 8'-0" x 3/4"	11
(G) TIE & (K) SCAB	1" x 4" x 10'-0"	168	1" x 4" x 10'-0"	168
(H) SPLICES	1" x 4" x 10'-0"	21	1" x 6" x 10'-0"	21
DIAGONAL BRACING	1" x 4" 740 LIN. FT.		1" x 4" 740 LIN. FT.	
POLES (PRESSURE TREATED)	16'-0" LONG	18	17'-0" LONG	12
NAILING GIRTS	2" x 4" x 18'-0"	4	2" x 4" x 18'-0"	4
	2" x 6" x 18'-0"	4	2" x 6" x 18'-0"	4
	2" x 8" x 18'-0"	3	2" x 8" x 18'-0"	3
	2" x 10" x 18'-0"	3	2" x 10" x 18'-0"	3
SPLASH BOARDS (PRESSURE TREATED)	2" x 6" x 12'-0"	18	2" x 6" x 12'-0"	18
PLATE	2" x 6" x 18'-0"	2	2" x 6" x 18'-0"	2
GIRDERS	2" x 10" x 18'-0"	20	2" x 10" x 18'-0"	40
BLOCKING & FILLERS	2" x 10" x 18'-0"	3	2" x 10" x 18'-0"	2
	2" x 4" x 18'-0"	2	2" x 4" x 18'-0"	2
	2" x 6" x 18'-0"	6	2" x 6" x 18'-0"	6
	2" x 8" x 18'-0"	2	2" x 8" x 18'-0"	2
	2" x 10" x 18'-0"	2	2" x 10" x 18'-0"	2
SPLICE	2" x 4" x 18'-0"	2	2" x 4" x 18'-0"	2
CABLE END STUDS	2" x 4" x 18'-0"	2	2" x 4" x 18'-0"	2
END RAFTERS	2" x 4" x 18'-0"	2	2" x 4" x 18'-0"	2
DOOR FRAMING	2" x 4" x 18'-0"	2	2" x 4" x 18'-0"	2
SIDING & DOORS: 1042 BM. 1" BOARDS OR 14 50S. OF MET. SIDING				
ROOF SHEATHING:	3344' OF 1" x 4" WOOD STRIPS, 12 @ 14 FT. LENGTHS			
ROOFING:	23 SQUARES - 86' RIDGE CAP			
HARDWARE: 8 DOOR HANGERS, SLIDING DOOR TRACK 52', 1 1/2 PR. 6" STRAP HINGES, GUTTERS, DOWNSPOUTS, NAILS, STRAPS, PAINT AND LAG SCREWS.				



CROSS SECTION
0 1 2 3 4 FT.



HEAVY CONSTRUCTION TRUSS ANCHORAGE

- ② IF METAL SIDING IS USED USE GIRTS OF SIZE & SPACING RECOMMENDED BY THE MANUFACTURER.
- ③ IF ROLL ROOFING OR ASPHALT SHINGLE ROOFING IS USED APPLY OVER SOLID SHEATHING.

COOPERATIVE EXTENSION WORK IN AGRICULTURE AND HOME ECONOMICS
DEPARTMENT OF AGRICULTURAL ENGINEERING
UNIVERSITY OF MARYLAND
UNITED STATES DEPARTMENT OF AGRICULTURE COOPERATING
MACHINERY STORAGE & SHOP
USDA '57 EX. 5849 SHEET 2 OF 2