

All About Animals

1st
GRADE



Table of Contents

All About Animals

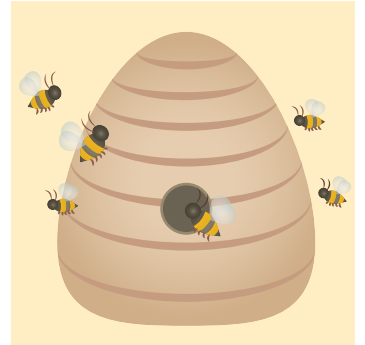
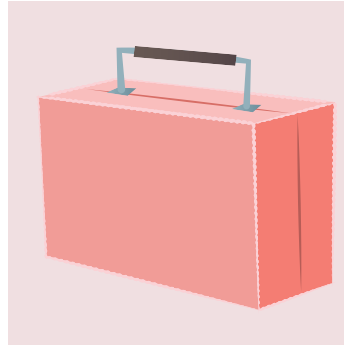
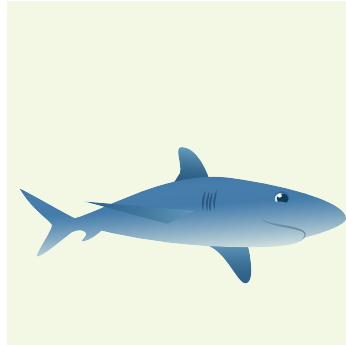
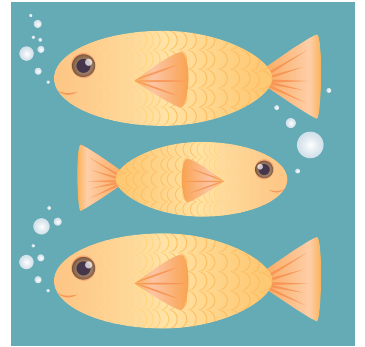
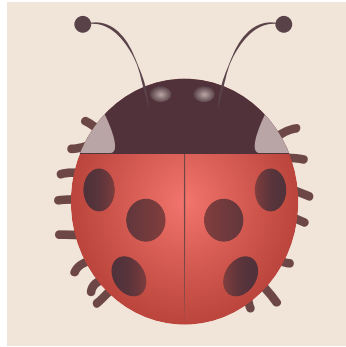
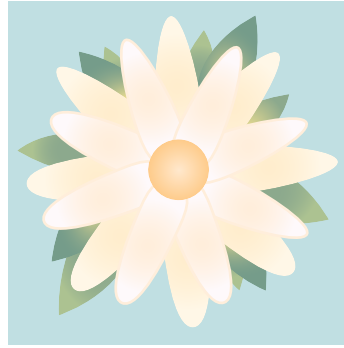
Living or Non-Living?
Living/Non-Living Mix-Up
Where Do Animals Make Their Homes?
Hunting for Animal Homes
Animals Building Homes
Can You Build These Animal Homes?
Hunting for Home
What's For Dinner?
What, Oh What Should I Wear?
Animal Coverings: Memory Match-Up Game
Animal Coverings
Animal Camouflage
Hide and Seek
My Home

Certificate of Completion

Want more workbooks? Join Education.com Plus to save time and money.
<http://www.education.com/education-plus/>

Living OR Non-Living?

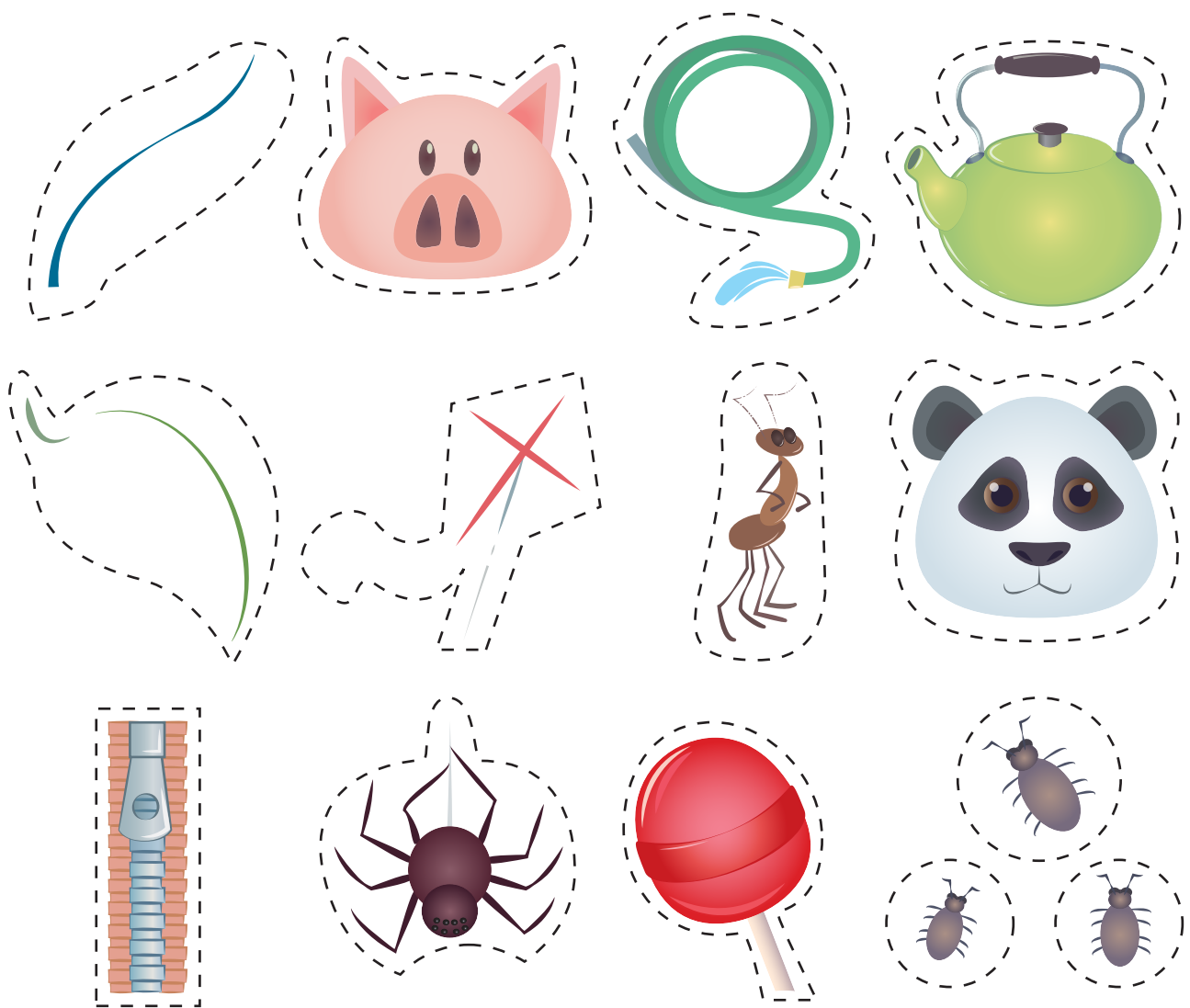
Look at the pictures below. Which ones are examples of **living things** and which ones are not? Place a green circle around all of the pictures of living things. Draw a red X over all of the non-living things.



Living / Non-Living Mix-Up

Look at these pictures. Some are examples of **living things**, and others are examples of **non-living things**.

Cut out each picture below and sort them by living or non-living. Then glue your pictures onto the correct side of the T-chart on the next page.



NAME:

Living Things

Non-Living Things

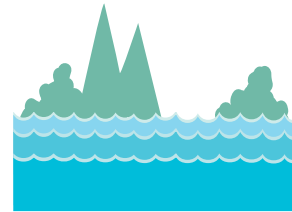
Where Do Animals Make Their Homes?

All living things need a place to live. Look at each animal below and decide where it might live. Draw a line to match the animal to its correct shelter or home.

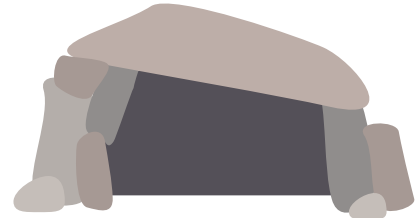
bear



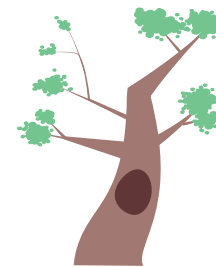
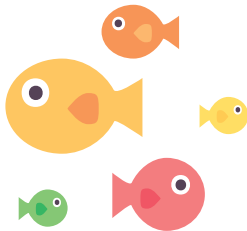
child



squirrel



fish



Now fill in the blank spaces below to make the sentences complete. Use the words above for clues.

1. A bear lives in a _____.
2. A _____ lives in a house.
3. A squirrel lives in a _____.
4. A fish lives in a _____.

Hunting For Animal Homes

Animals need shelter in order to survive, and there are many different types of animal homes! Can you find these different shelters in the word puzzle below?

HINT: Make sure you look backwards and diagonally.

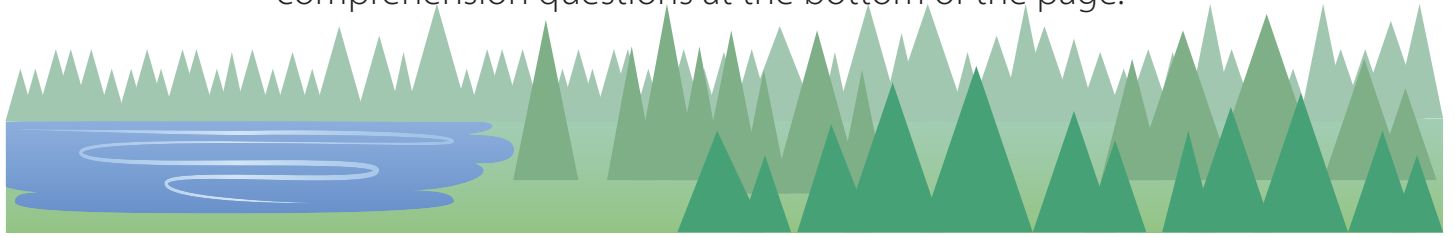
Word Bank:

house	underground	tunnel	tree	pond	ocean	forest
cave	nest	hive	den	burrow	web	barn
kennel	stable	coop	sty			

H L E N P X W P O N D B K E Z
F P S A L Z J N U N X Z S E W
Y Q I E B Q Y Q U N B N S T Y
H U R C C B B O H F Q E G N H
H Y Y O E X R C C Q M D O U E
H Z X W Q G T P A O P M P B U
B T F R R N G N Q V I W S N D
S I T E H G B W E T E J L E K
I L D I E L B A T S W H K S H
A N V I F A U H T D U E R T B
U E I X Z O R R L H N O G B W
T U N N E L R E X N P E H Z I
J E A W Z V O E E X E O E Q J
N R A B A S W L S R N N O L F
Y S V N X C T P T T H Q M C R

ANIMALS BUILDING HOMES

Read the paragraph about animals building their homes. Then answer the reading comprehension questions at the bottom of the page.



Star-nosed moles use their long, sharp claws to dig shallow networks of tunnels near water. **Spiders** have special silk glands found in their stomachs that they use to build their webs. **Prairie dogs** are expert diggers. They use their sharp claws to dig elaborate tunnels underground. **Beavers** have powerful teeth that they use to gnaw bark and wood. They cut down smaller parts of trees and plants and use these materials to build their lodges and dams. **Woodpeckers** use their sharp beaks to chisel nests into the trunks of living trees. **Bees, wasps, and yellow jackets** make wax inside their bodies. Then they use the wax mixed with saliva to build honeycombs. Hundreds of combs are usually joined together to make one home for thousands of insects. This is called a hive. A hive makes a good home for a whole colony.

1. Which two animals use sharp claws to build tunnels underground?

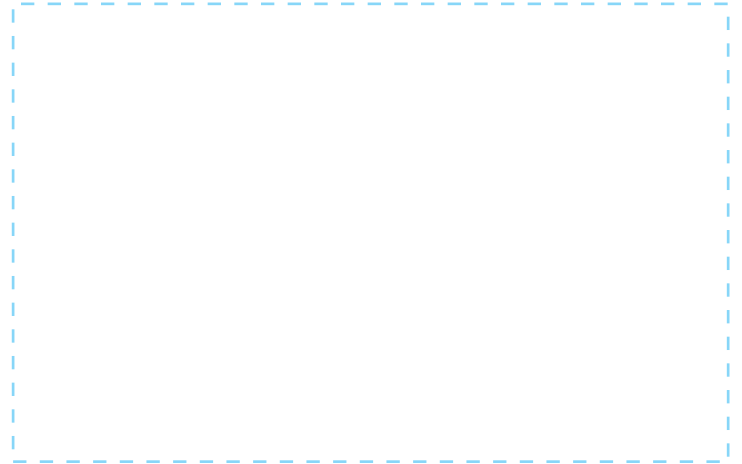
2. Which animals use tools inside their bodies to build their homes?

3. Which two animals use trees to build their homes? Explain how.

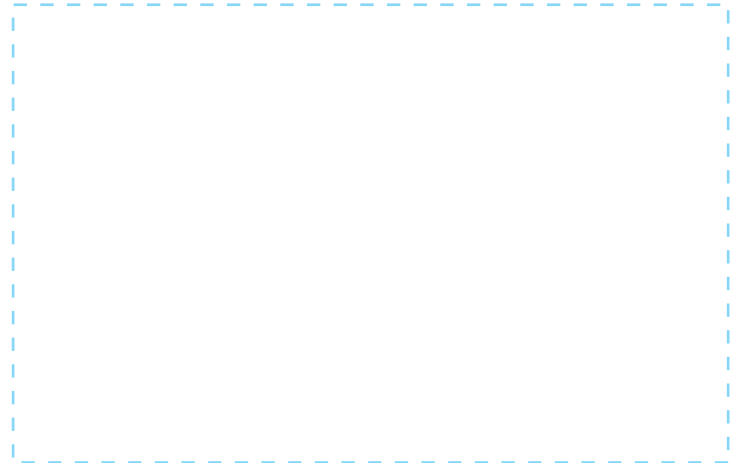
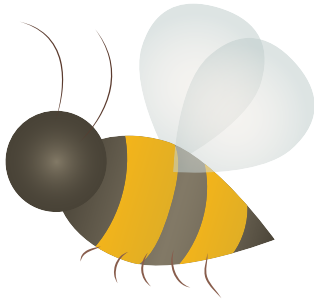
CAN YOU BUILD THESE ANIMAL HOMES?

Now that you have learned about HOW some animals build their homes, can you help to show WHAT each shelter would look like? Look at each animal picture below. In the box next to each animal, draw a picture to show what its home or shelter would look like!

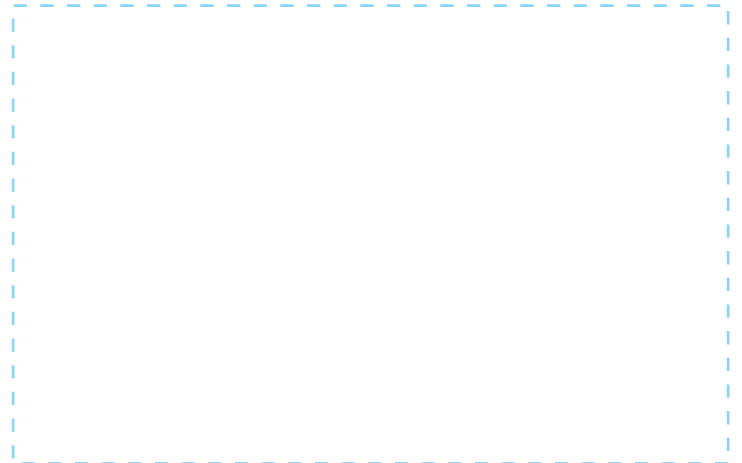
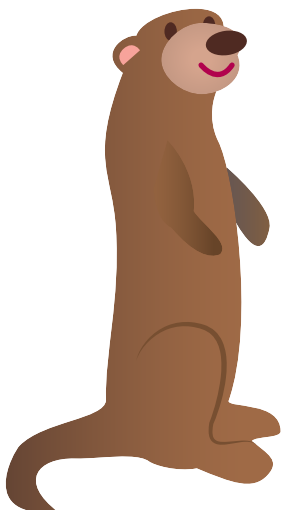
woodpecker



honey bee

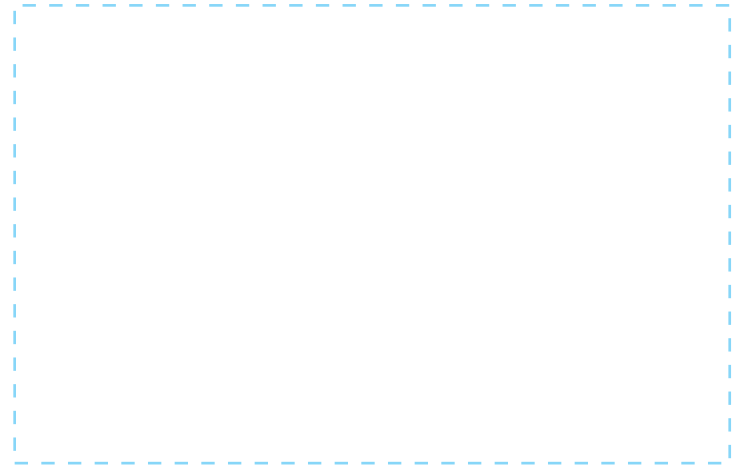
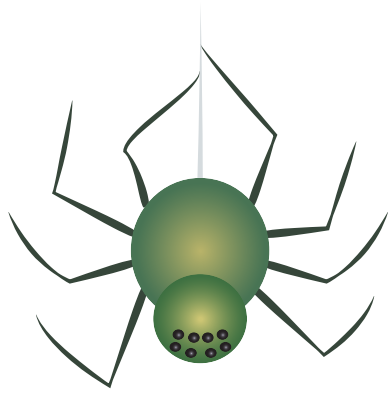


prairie dog

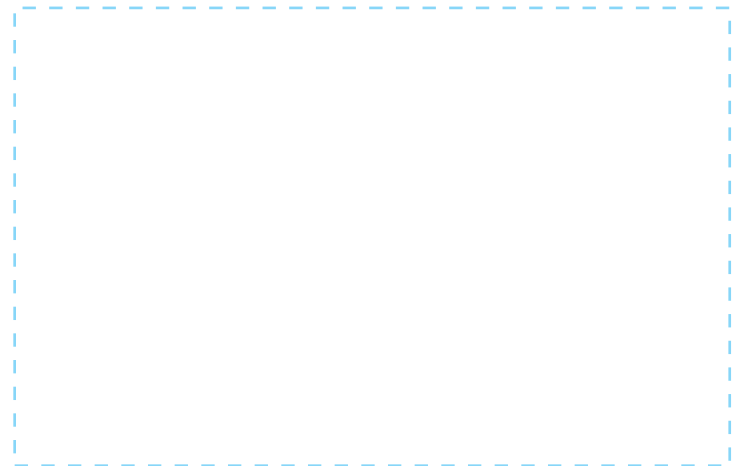


CAN YOU BUILD THESE ANIMAL HOMES?

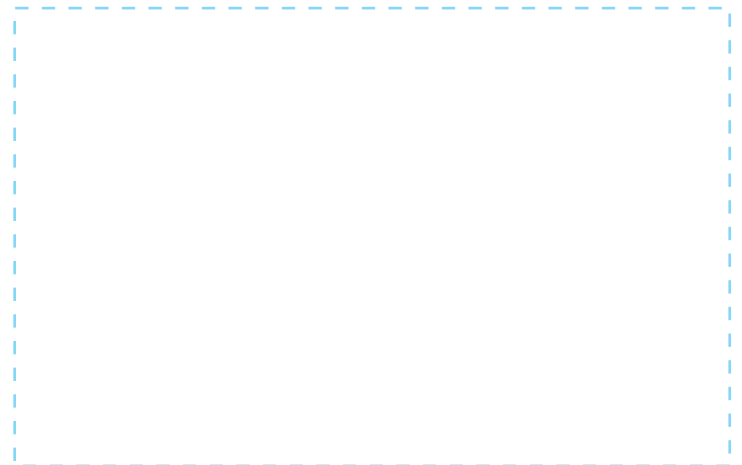
spider



beaver

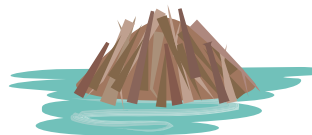
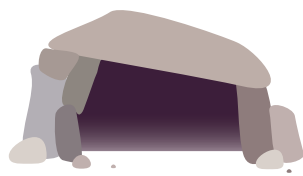
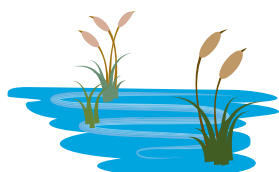
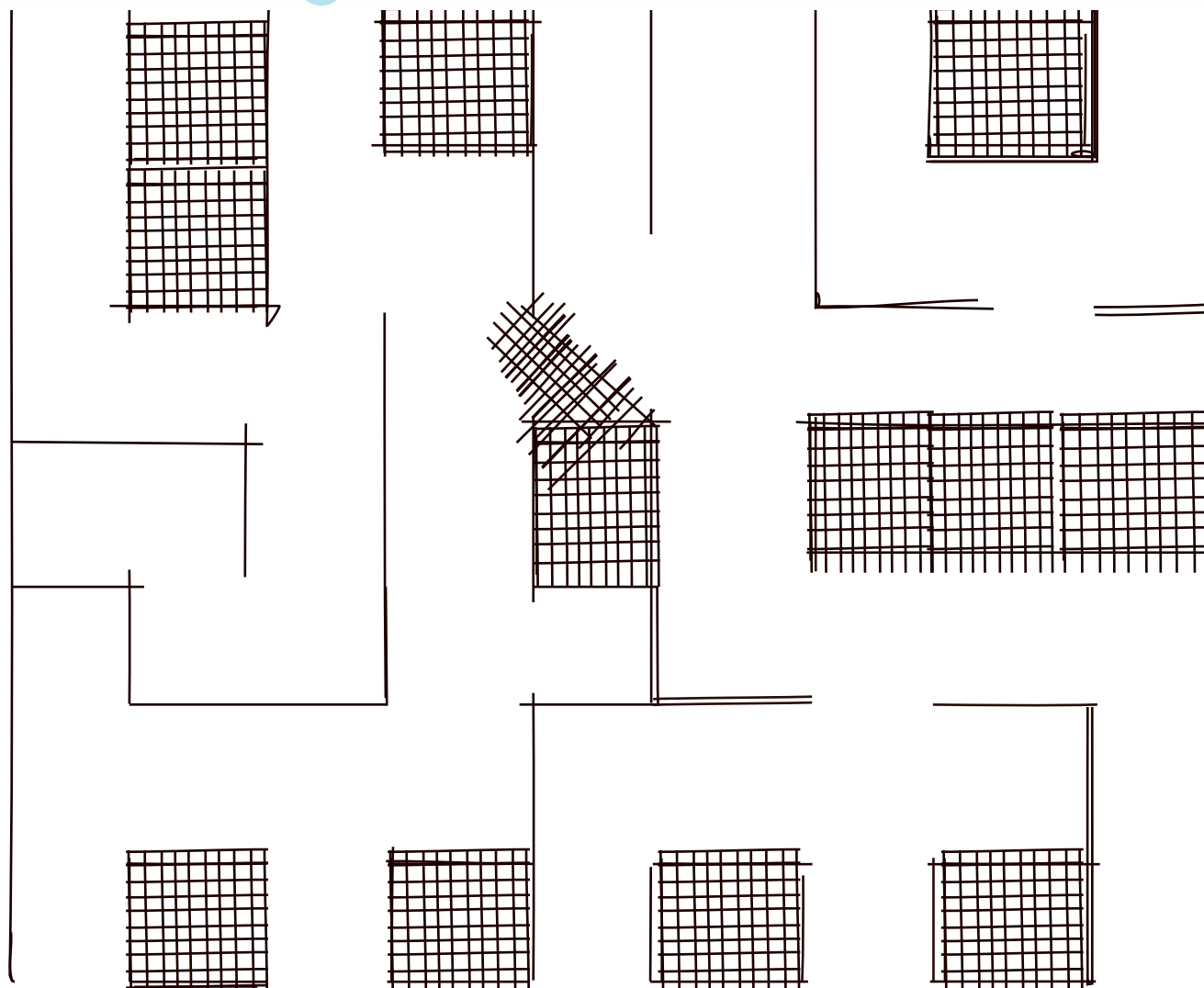


star-nosed mole



Hunting For Home

Can you help these animals safely find their way home? Each animal takes a different path in the maze below. Use a different color to trace each animal's path back home to its habitat.



What's for dinner?

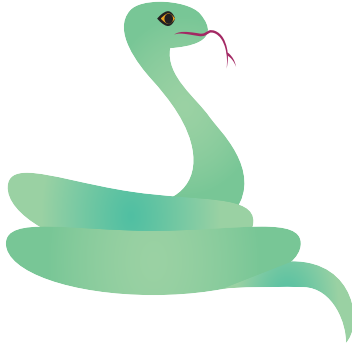
All living things need food and water in order to survive!

Look at each animal below. What might these animals eat in order to survive and thrive? Draw your ideas inside the boxes.

squirrel



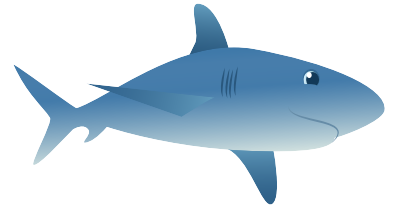
snake



horse

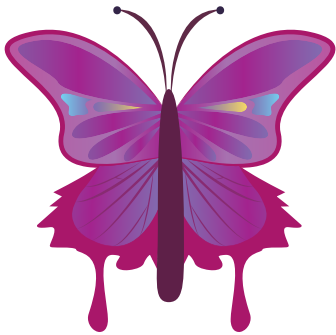


shark

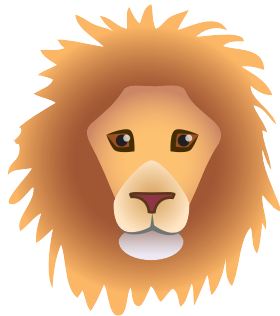


--	--	--	--

butterfly



lion



puppy



frog

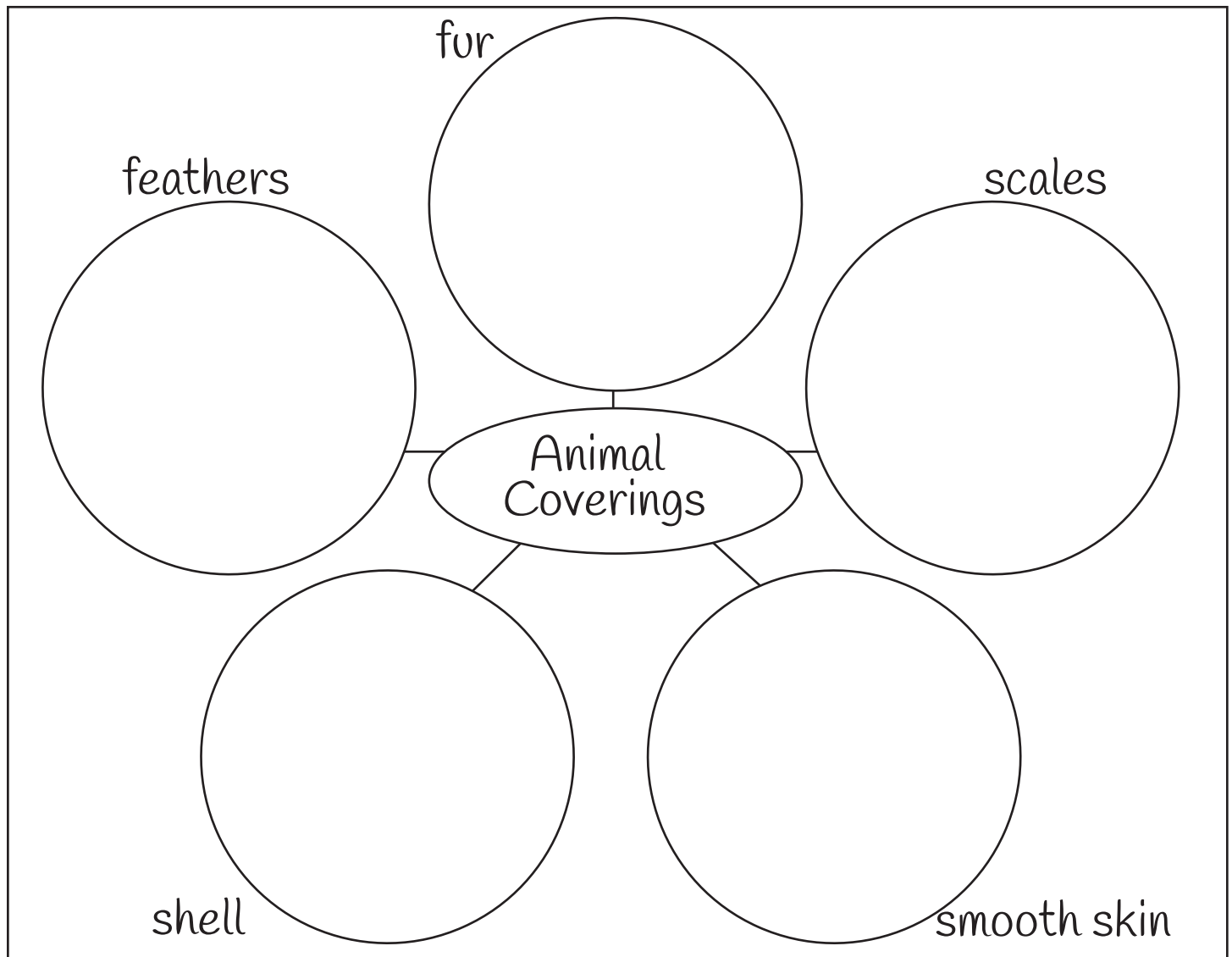


--	--	--	--

What, Oh What Should I Wear?

Different animals wear different types of body coverings. Can you place each animal below in the correct category? Give it a try!

Directions: Cut apart the animal pictures at the bottom of the page. Then paste them into the correct category on the animal coverings diagram.



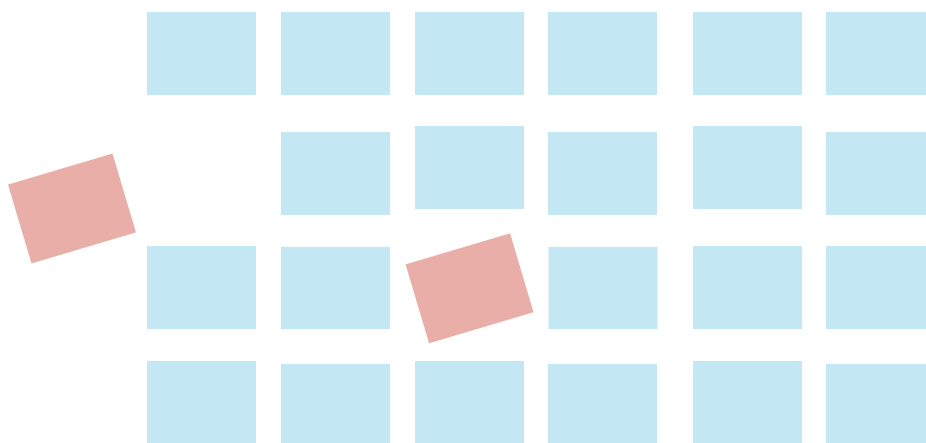
Animal Coverings: Memory Match-Up Game !

Animals have different features that help them to survive in different places. These features (also called body coverings) include fur or hair, shells, scales, skin, and feathers.

Can you match the animals with their correct body coverings? Here's a game to test your skills!

Game Rules and Set-Up

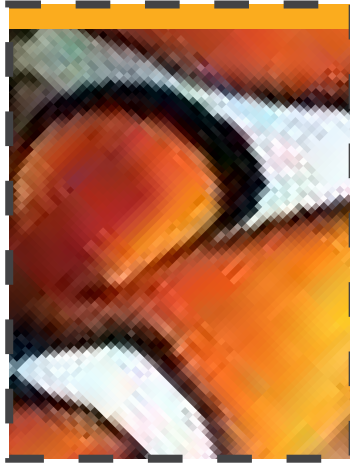
1. Cut apart the animal cards using the dotted lines as a guide.
2. Then cut apart the body covering cards in the same way.
3. Mix all of your cards together and place in one large pile.
4. Now build a memory board lining your cards up to make a big square. (4 cards across and 6 cards down)
5. Each player turns over two different cards at the same time. If they match (tiger/fur or snake/scales) then you get to keep the cards! If they don't match, then you must flip them back over in their place on the board and it is the next player's turn.
6. The game continues until all matches have been found and there are no more cards left on your memory board! The player who has the most matches in the end is the winner!



Animal Coverings: Memory Match-Up Game!



Animal Coverings: Memory Match-Up Game!



Animal Coverings

Animals have different features that help them to survive in different places. These features (also called body coverings) include fur or hair, shells, scales, skin, and feathers.

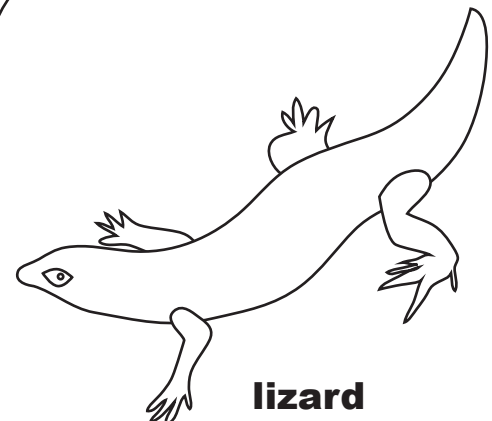
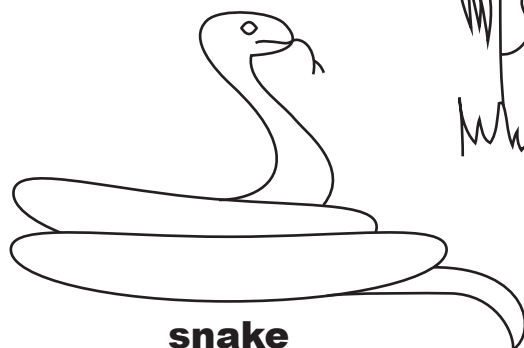
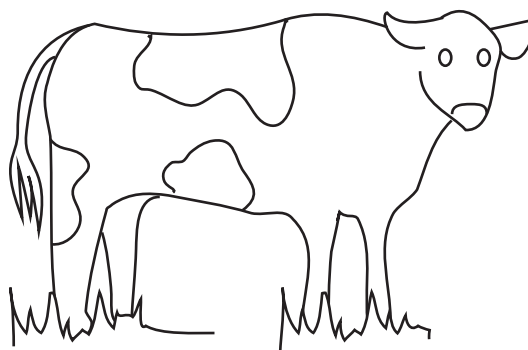
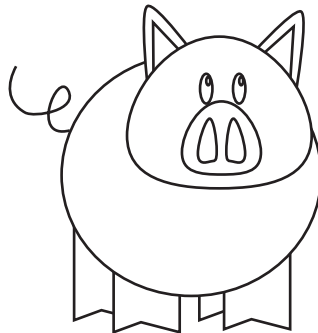
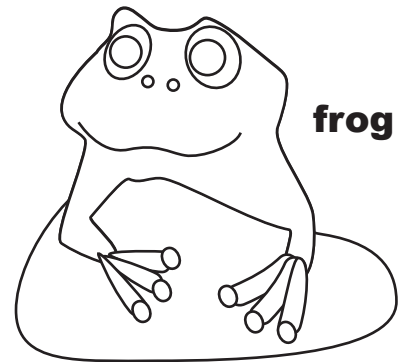
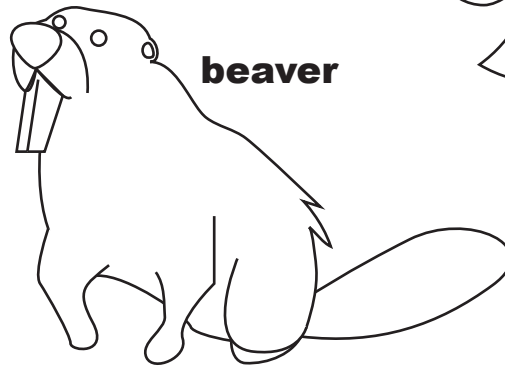
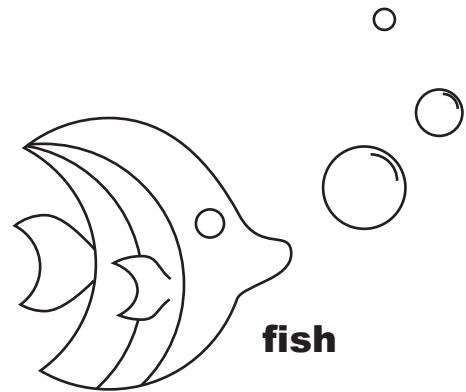
Can you find the correct body covering for each animal below?

If the animal is covered with **fur**, color it **orange**.

If the animal is covered by **scales**, color it **green**.

If the animal has **feathers**, color it **blue**.

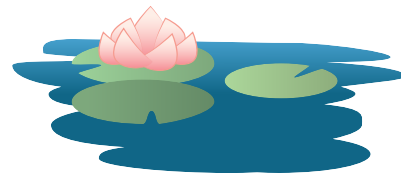
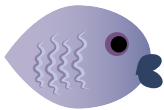
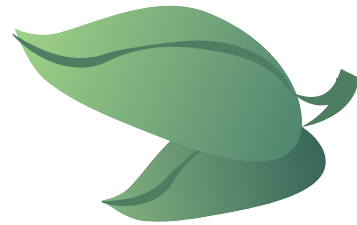
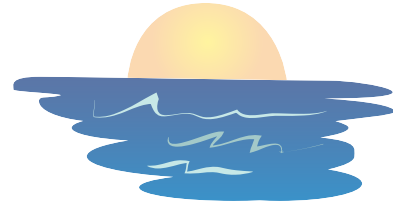
If the animal has **skin**, color it **pink**.



Animal Camouflage

Some animals have body coverings that help them to blend in with their habitat. This is called **camouflage**.

Draw a line to connect each animal with the camouflage habitat that it belongs to.

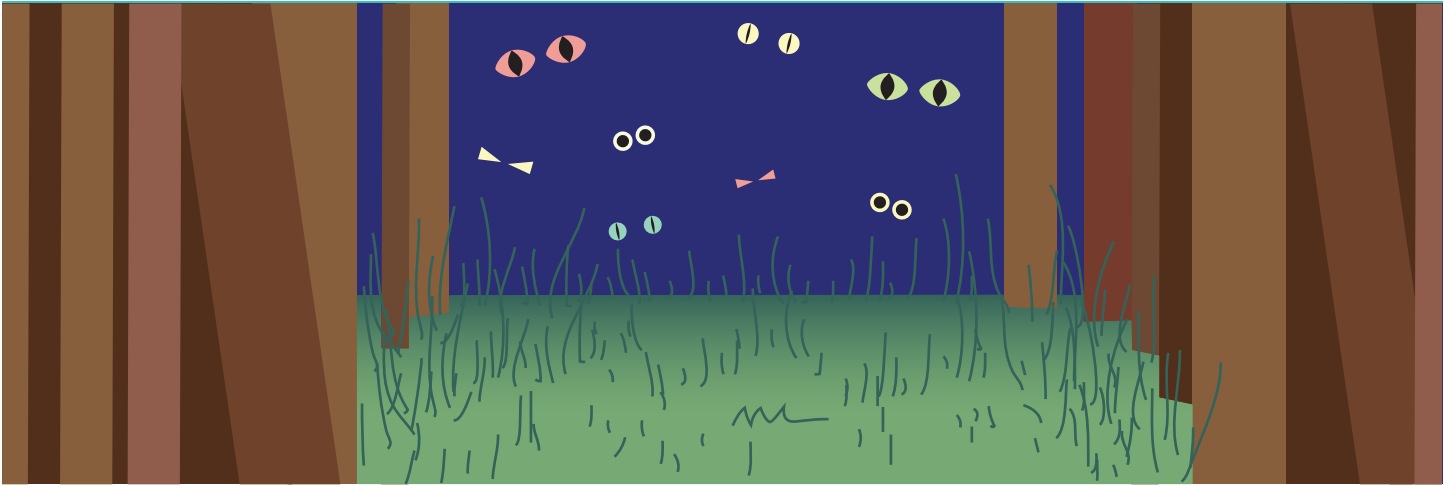


In the spaces below, write down the key color that each animal relies on to camouflage itself in its habitat.



Hide and Seek

Many animals must blend into their surroundings in order to hide from their enemies. The colors or patterns that an animal has can help it hide from dangerous predators and stay safe in its own habitat.



Directions: Color the animal pages to make sure each creature stays safe in its habitat.

Remember that each animal's coloring and body patterns will need to blend into its surroundings in order to be protected!

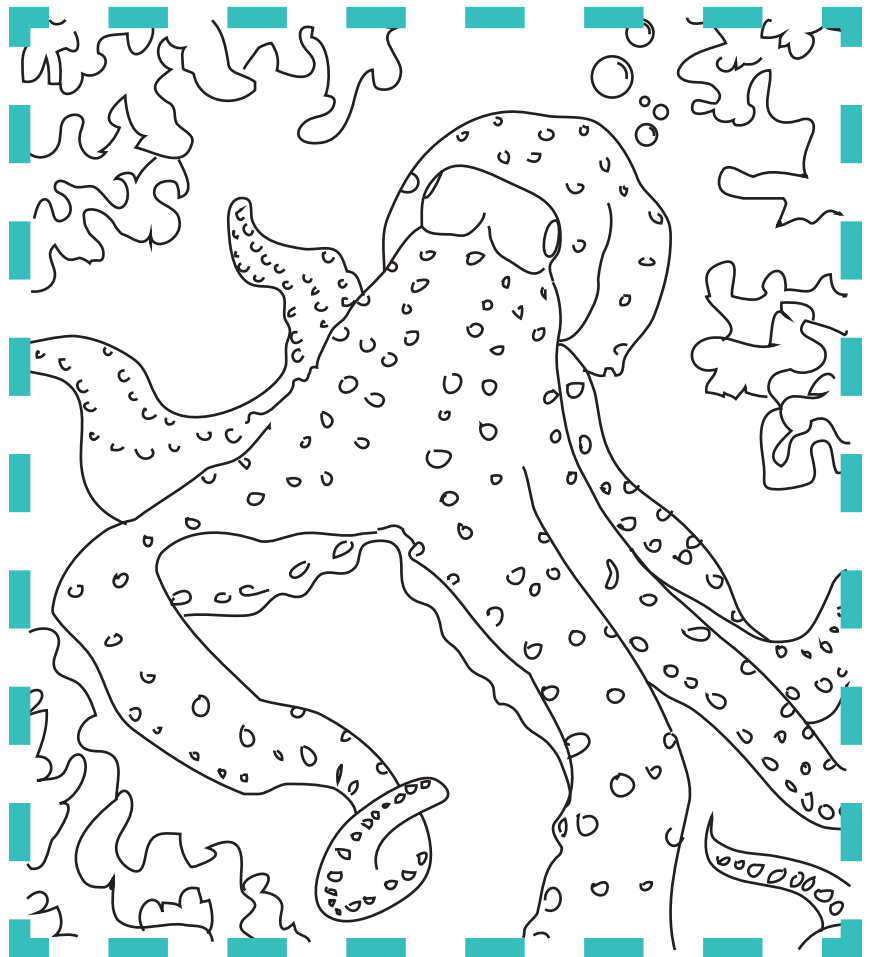
Use lots of **COLOR** and detail to make each animal look like it would in its natural habitat.

HINT: Think about the scenery you will need to add in order to keep each animal safe!

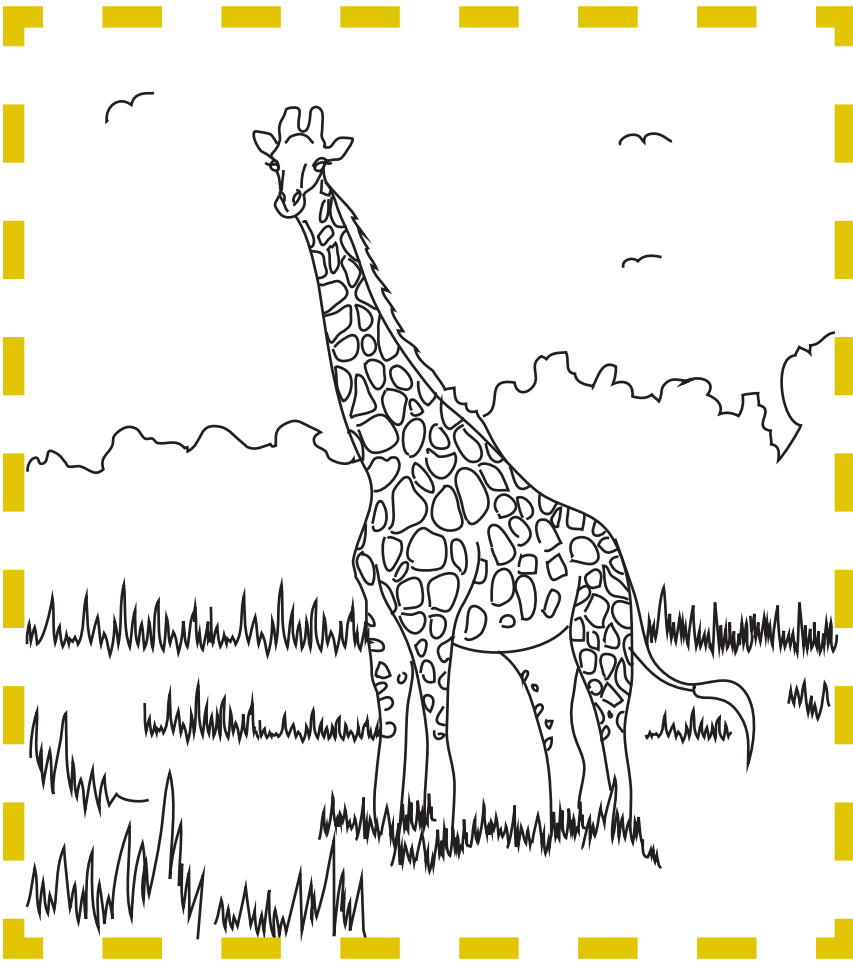


OWL

Hide and Seek

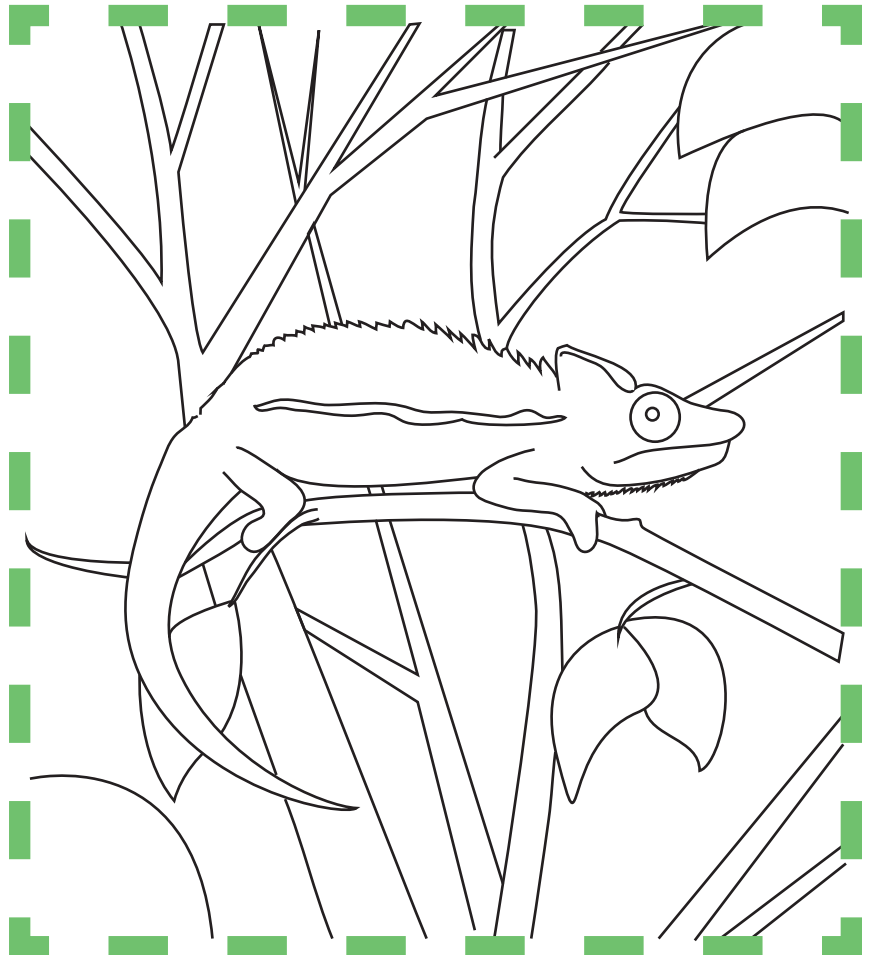


OCTOPUS

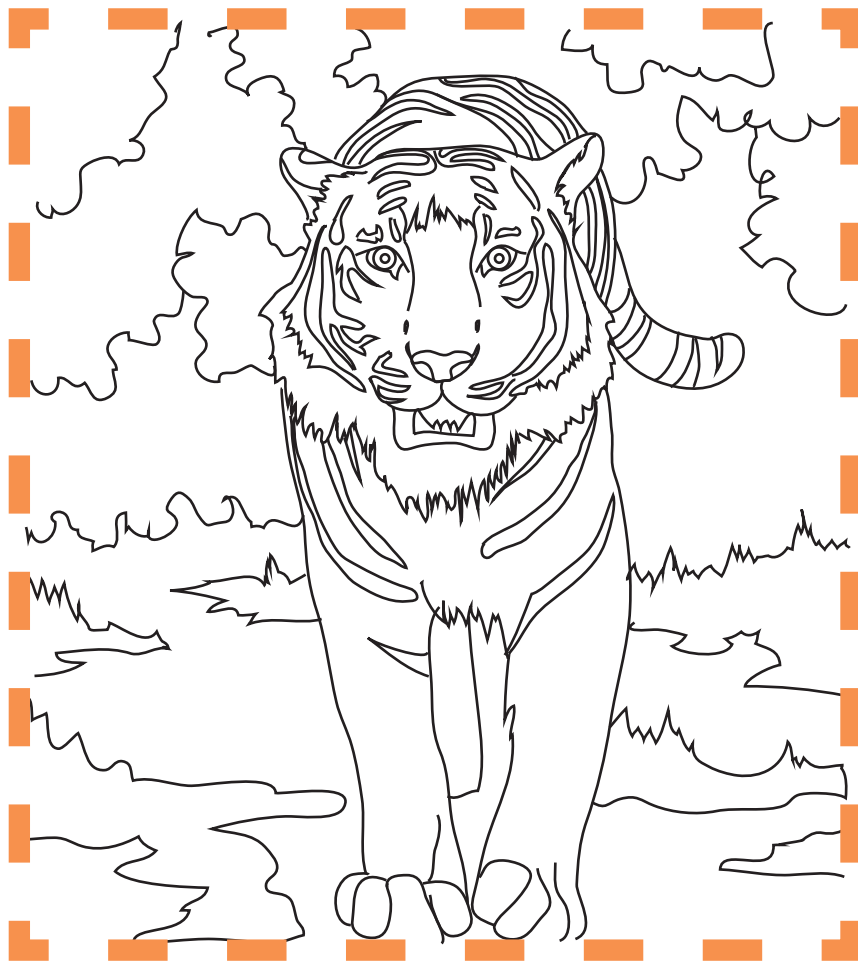


GIRAFFE

Hide and Seek

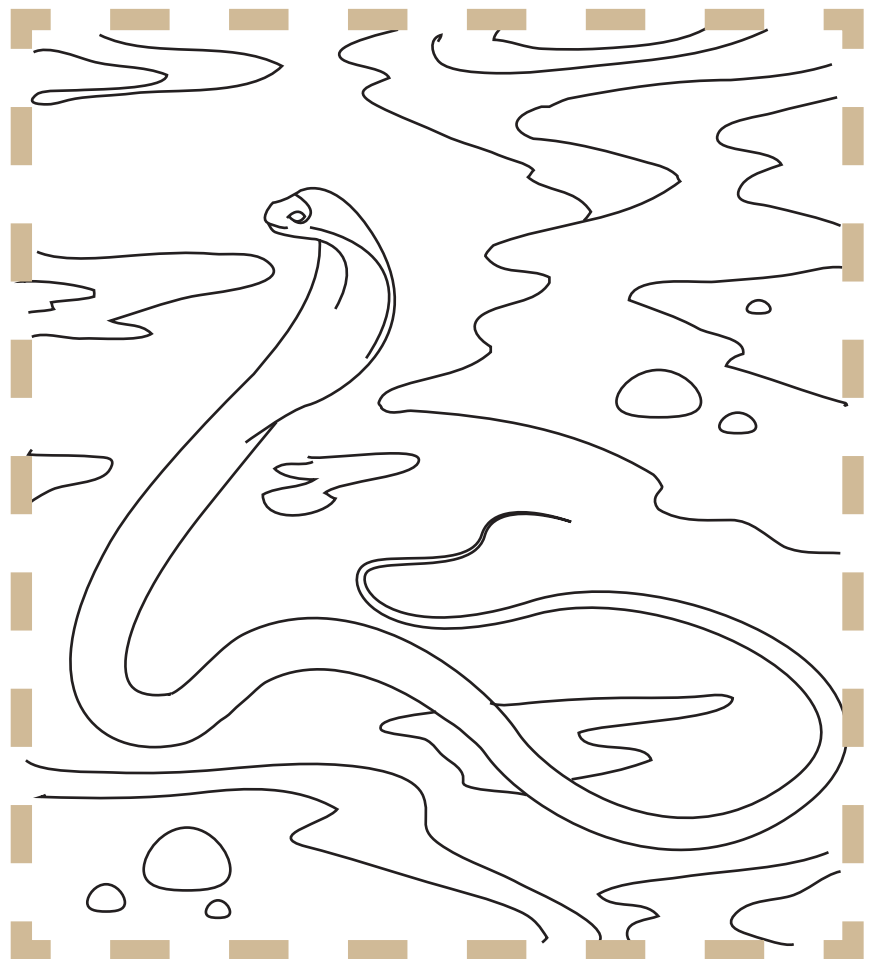


CHAMELEON



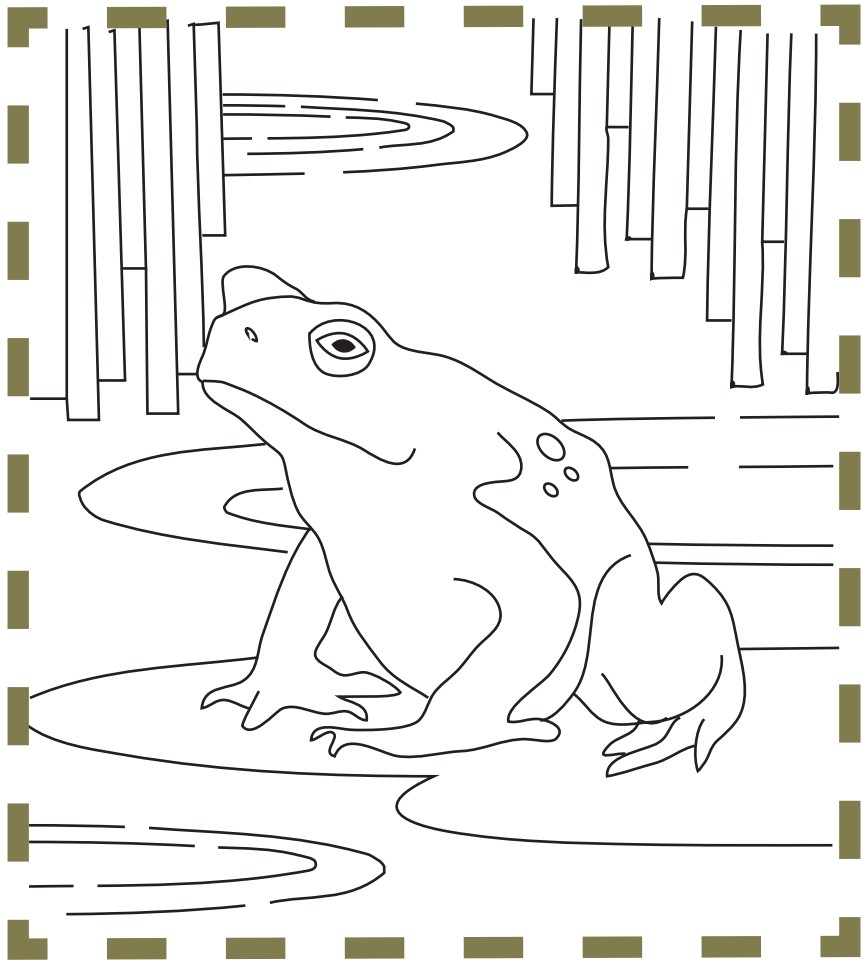
TIGER

Hide and Seek



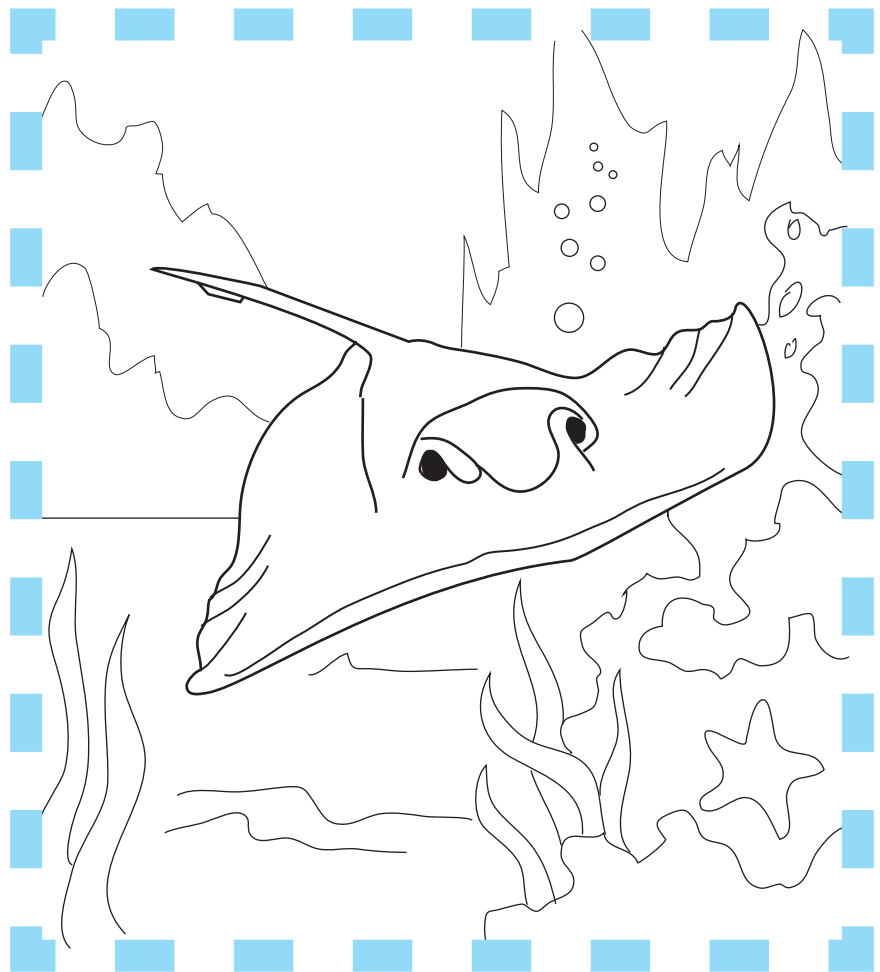
RATTLESNAKE

Hide and Seek

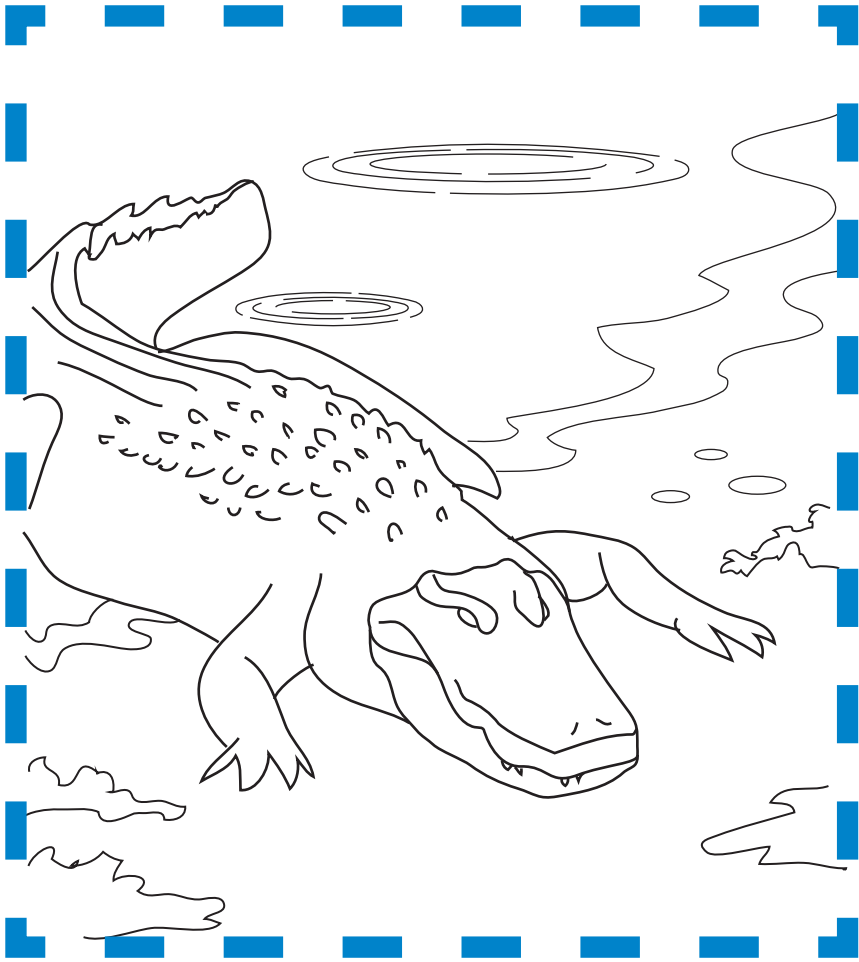


TOAD

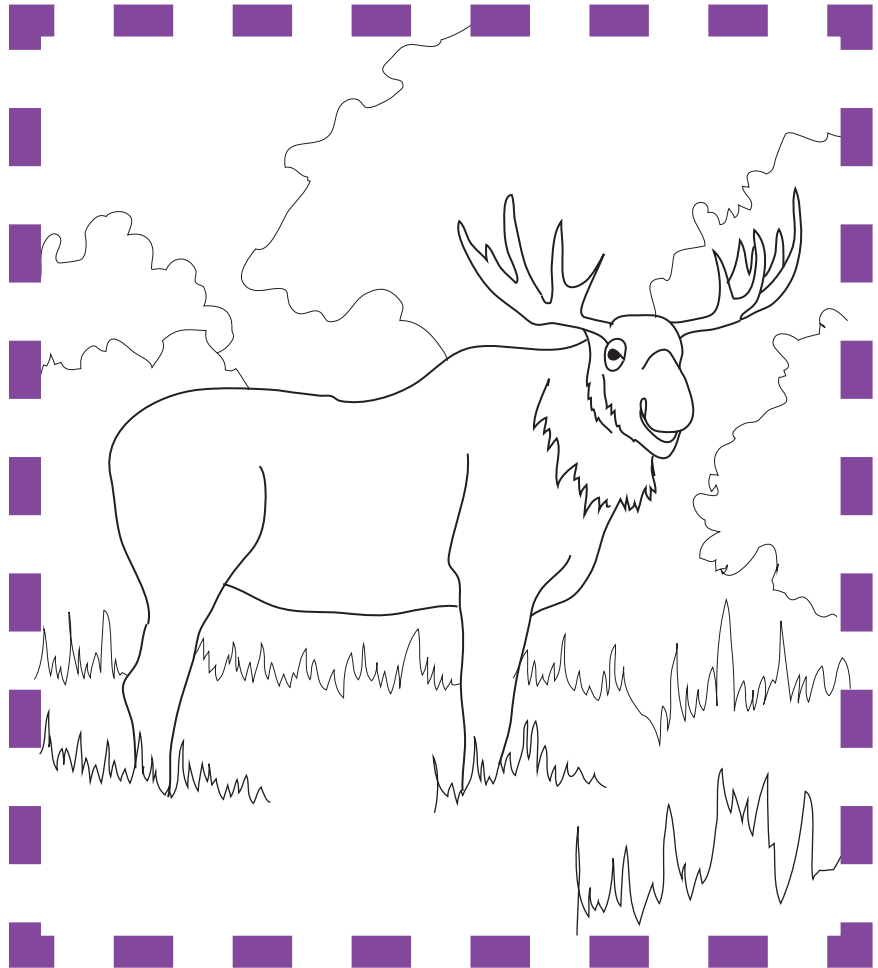
STINGRAY



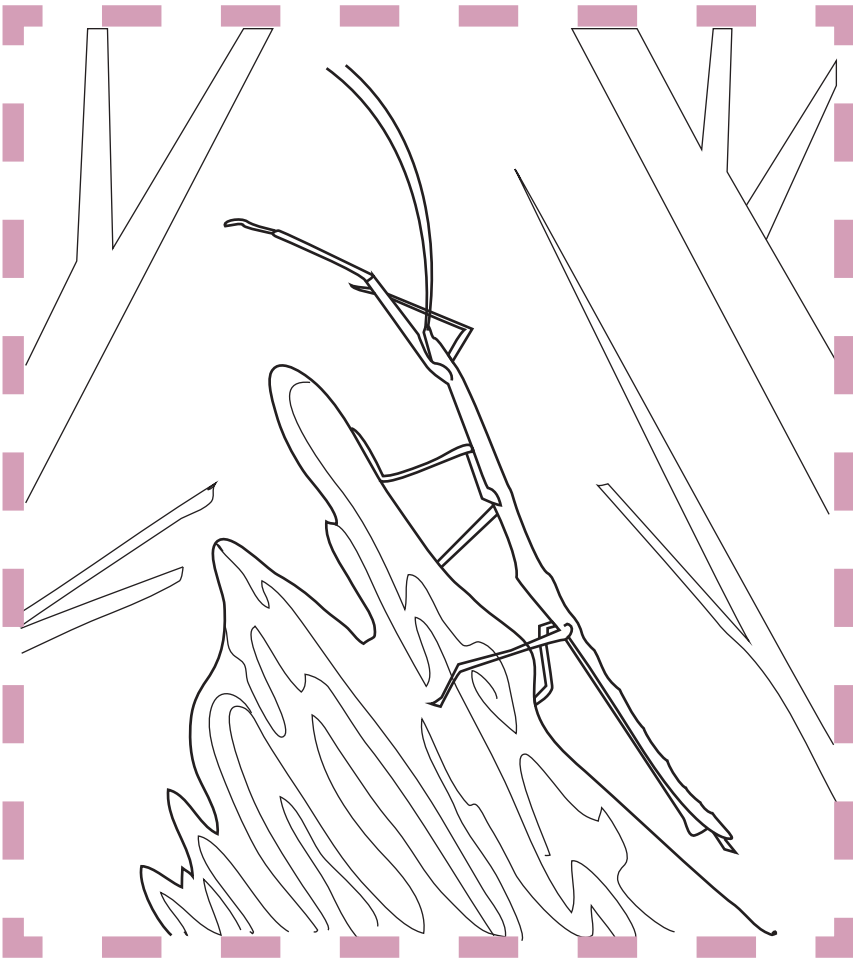
Hide and Seek



CROCODILE



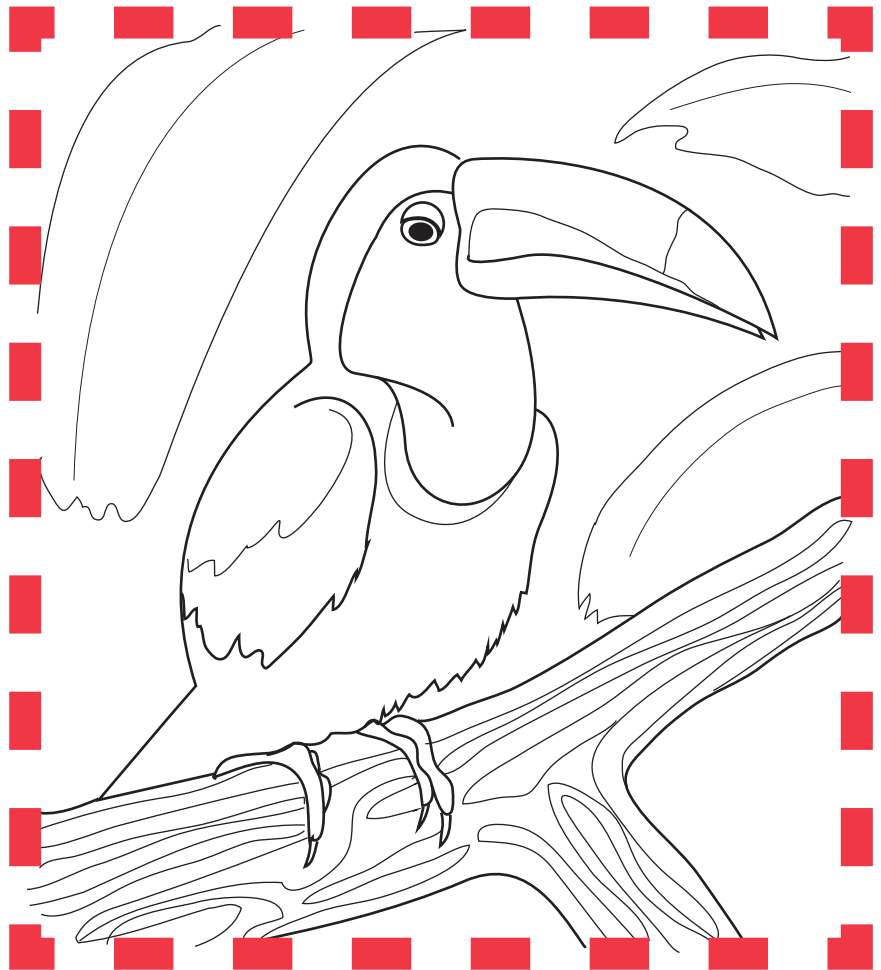
MOOSE



WALKING
STICK

Hide and Seek

TOUCAN

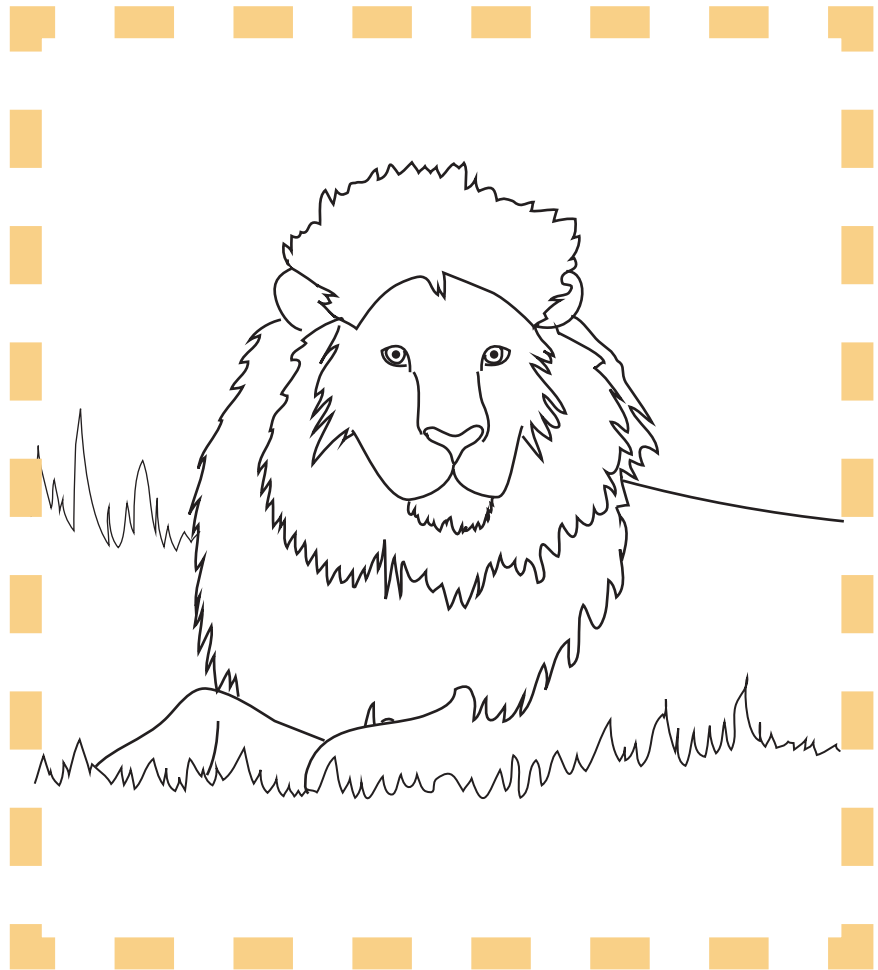


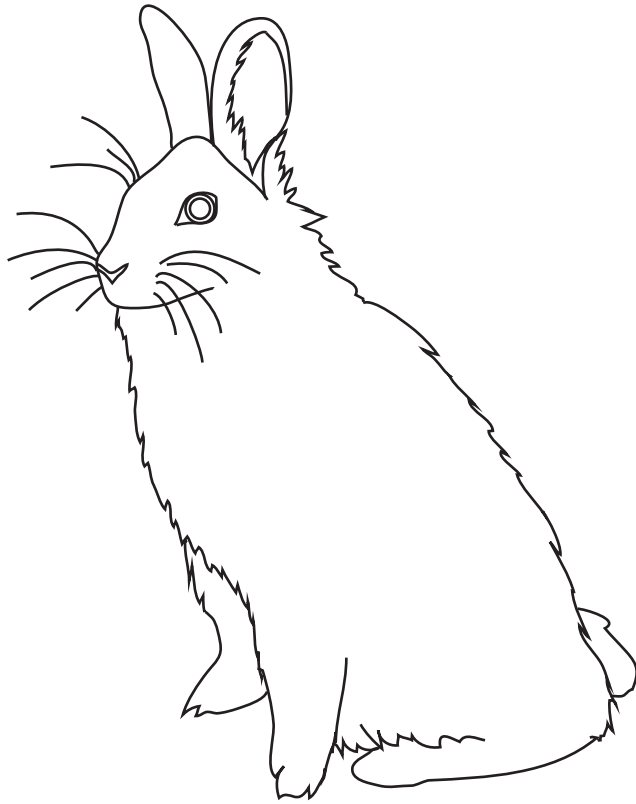


RED-EYED
TREE FROG

Hide and Seek

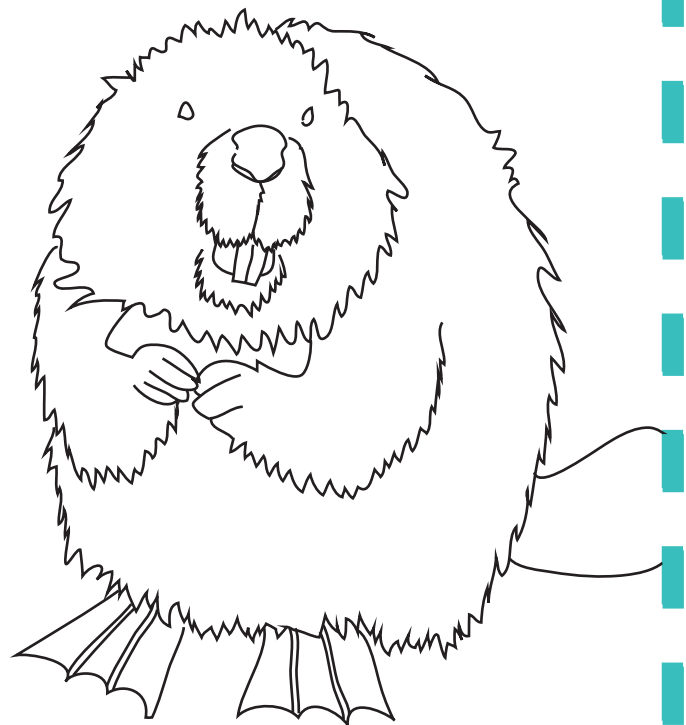
LION





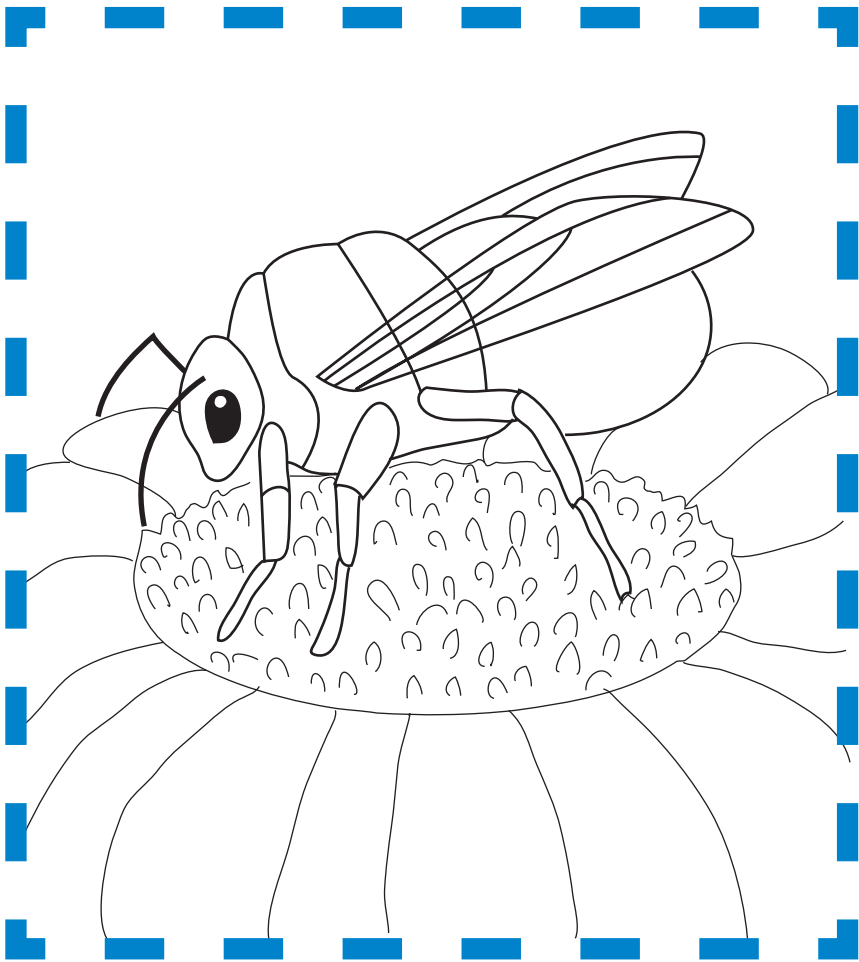
RABBIT

Hide and Seek



BEAVER

Hide and Seek



BUMBLEBEE



BEAR



Draw a picture of your home!

A large rectangular area defined by a dotted blue line, intended for drawing a picture of a home.

What are a few words that describe your home?

Write a sentence about your favorite part of your house:

Great job!

is an Education.com science superstar

