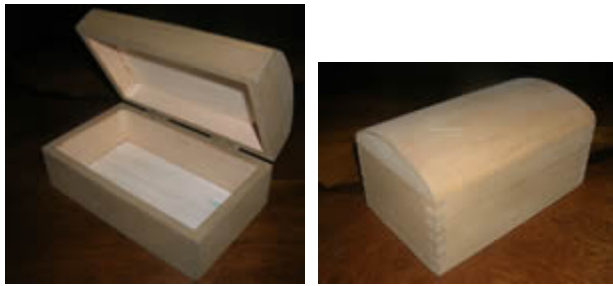
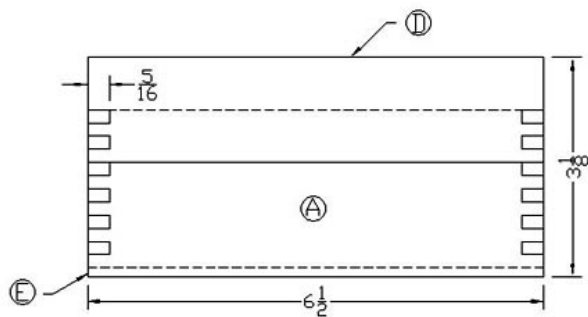


How to Make a Jewelry Trinket Box

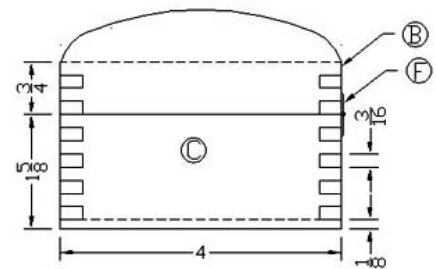
Trinket boxes are fun little places for you to keep special items. These boxes are perfect for keeping your keys in a place where you will not lose them. Or they make perfect gifts for children who want a place to keep their special trinkets!



TRINKET-JEWELRY BOX



FRONT VIEW



SIDE VIEW

Technical Information for Making a Jewelry Trinket Box

A. Materials List:

QUANTITY	LETTER	NAME	SIZE	MATERIAL
1	A	Front	5/16" x 2 1/4" x 6 1/2"	Cherry
1	B	Back	5/16" x 2 1/4" x 6 1/2"	Cherry
2	C	Sides	5/16" x 2 1/4" x 4"	Cherry
1	D	Top	3/4" x 4" x 6 1/2"	Cherry
1	E	Bottom	1/8" x 4" x 6 1/2"	Cherry
2	F	Decorative Butt Hinges	1"	Brass

WOOD SPECIES



Black
Cherry

B. Patterns:

1. Scale the side view of top (D). This can be accomplished by measuring the print out and dividing that size into the dimension size. This will give a multi-factor that can be used to figure the enlargement size for the pattern. This can be easily done at home if you have a copier capable of making enlargements. If not, most companies that do duplicating can make the enlargements required for the pattern.
2. Trace the pattern enlargement onto poster board or Mylar and use a pair of scissors to cut out the pattern.

C. Cutting Procedures:

1. This project can be made from one 3/4" x 5" x 36" board.
2. Joint one edge of the board.
3. Use a table saw to rip the board 4" wide for the top (D) and bottom (E).
4. Use a power miter saw to cut the Top and Bottom each 6 1/2" long.
5. Plane the bottom (E) 1/8" thick. This can be accomplished by placing the bottom piece on a thicker board for support.
6. Rip the remaining board 2 1/4 wide.
7. Plane the board 5/16" thick.
8. Use a power miter to cut the front (A) and the back (B) 6 1/2" long. Also cut the sides (C) 4" long.
9. Trace the pattern onto both ends of the top (D).
10. Shape the top portion of the top (D) according to the pattern.
11. Cut six 3/16" x 5/16" finger joints on both ends of front (A), back (B), and ends (C). To make the jig for the finger joints, follow the procedures A through J:

A. Use a table saw with a 3/16" wide dado blade. Adjust the blade height to 5/16".

- B. Screw a 3/4" x 3" x 18" board onto the fence of a miter gauge. Use a square to adjust the miter gauge 90 degrees to the dado blade.
- C. Clamp a second board 3/4" x 3" x 18" onto the first board with C-Clamps.
- D. Make a cut in the boards with the dado blade. Remove the second board.
- E. Cut a small piece of wood to serve as a tongue. The tongue should be the exact dimension as the dado cut.
- F. Glue the tongue into the slot of the second board. The tongue should project out from the board approximately 1/2".
- G. Position the second board in front of the first board. Adjust the tongue exactly 3/16" from the dado blade and secure the boards together with C-Clamps. This adjustment will determine the fit for the finger joints.
- H. Use scrap wood to make trial cuts and slight lateral adjustments with the jig until the joints fit perfectly.
- I. Each time a cut is made the previously cut portion should be placed on the tongue before the next cut is made.
- J. After the joints fit perfectly in the trial scrap wood, begin cutting the finger joints in the ends of the front (A), back (B), and sides (C) using the same settings.

D. Jewelry Trinket Box Sanding Procedures:

1. Hand sand all parts 80 grit sandpaper.
2. Intermediate hand sand all parts with 120 grit sandpaper.
3. Finish hand sanding the project with 220 grit sandpaper after the assembly procedure.

E: Assembly Procedures:

1. Place wood glue in the finger joints.
2. Position the sides (C) onto the ends of the front (A) and back (B). Remove excess glue and clamp securely.
3. Use a tri-square to make sure that all corners are perfectly square. Allow glue to dry over night.
4. Glue the top (D) and the bottom (E) onto the box assembly and clamp in place.

F: Finish Procedures:

1. Use plastic wood dough to fill all cracks and imperfections.
2. Hand sand the entire project with 220 grit sandpaper.
3. If stain is desired, apply with a brush and allow to penetrate for 5-10 minutes, and then remove with a clean rag.
4. Allow stain to dry 6 hours and then repeat with a second coat.
5. Apply a clear finish coat such as Varathane, Polyurethane, lacquer, etc. using a pure-bristle brush. Allow to dry 12 hours.
6. Lightly hand sand the finish with 220 grit sandpaper.
7. Apply second coat of clear finish.
8. If additional finish coats are desired, repeat steps #5 & 6.
9. Allow final finish coat to dry 24 hours.
10. Attach the decorative butt hinges (F).

Notes: 1. Be sure to match the color of the wood dough to the stain color.
2. Use a tack rag after each sanding procedure to remove the dust.

***Congratulations, your jewelry trinket box is finished and ready to use!**