

**NOTICE**

The purchaser agrees when purchasing this plan (the "Plan"), the purchaser has acquired the right to build or construct the project or projects shown on the Plan (the "Project") for his/her/its personal use only and not for any commercial use. 2) in part by any means whatsoever is or in part by any means whatsoever is 3) Blueprints For the Handymouse shall not be liable for any willful misuse or negligent use of this plan, the Project or any tools used to construct the Project or for any loss or damage resulting therefrom. \*

**NOTE: Read all directions before beginning**

Carpenter's glue should be used to reinforce all joints. Set all nails and countersink screws using wood filler as necessary to spot nails and screws before finishing wood. Do not use glue on the inside of the project. Wipe off excess glue with a wet cloth before it has time to set. Dry fit all parts to ensure proper fit prior to joining.

**Directions:**

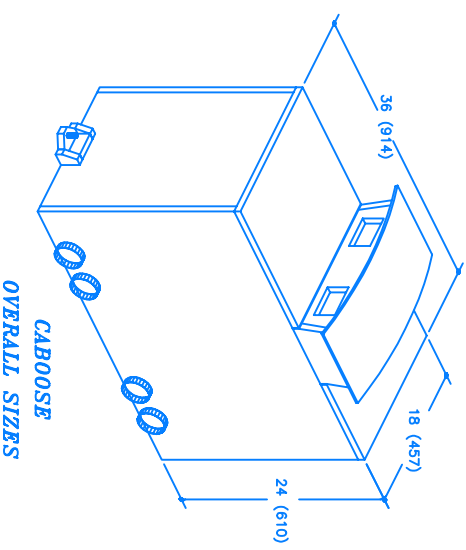
**Procedure 1) - See Figure 1**

Begin your project by laying out all materials as illustrated in Figure 1 (Material Layout). Using a pencil, measuring tape and straightedge, (along with a protractor or miter gauge if required) draw out all the parts exactly as shown using the dimensions and shapes illustrated in Figure 2 (Cutting Diagram). Be sure to include the proper bevels and angles. Pieces as well in the case where wood joints are to be used. Be sure to leave enough space between them to allow for the width of the saw cut, which will vary with different saw blades.

**Procedure 2) - See Figure 2**

Start by cutting out all the pieces as illustrated in Figure 2. The wheels H may be cut with a jigsaw, bandsaw, or coping saw. As they do not turn, the roundness is not critical, if you don't have a compass, try to find a round object in the house such as a bowl to trace around. The cutouts in pieces M are made by first drilling 3/8" holes in one corner and then cutting with a jigsaw to the edge of the wheel. These wheels are designed to be passed to being cut out but the project looks better with the windows cut out as per the photo.

**OVER**

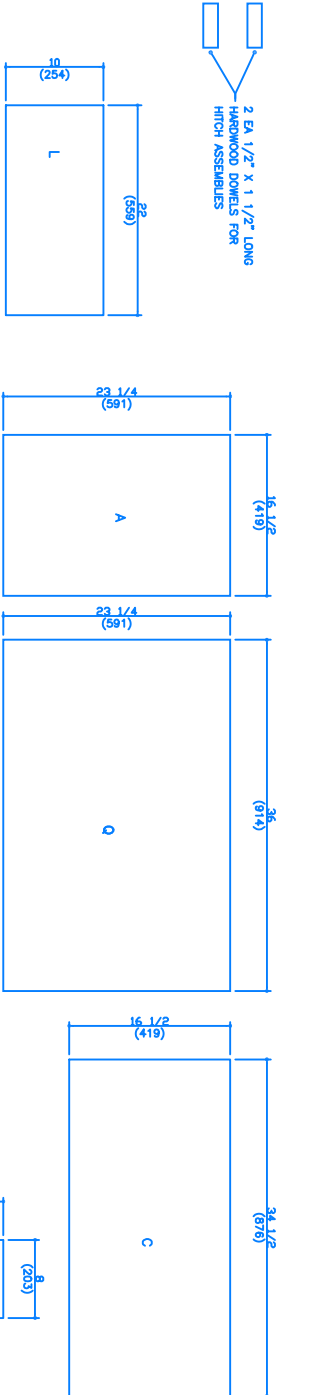
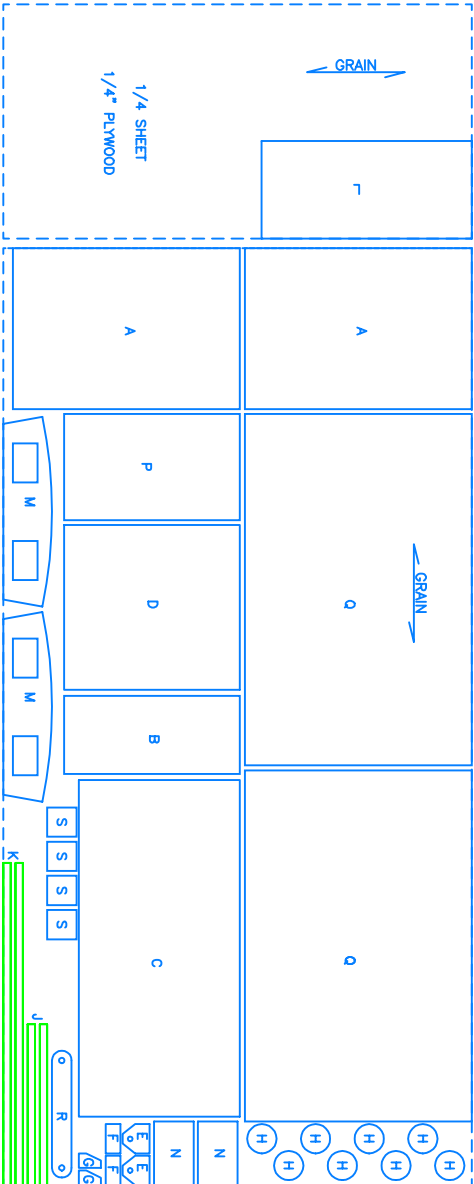


**CABOOSE OVERALL SIZES**

**CABOOSE TOYBOX - Project #514**

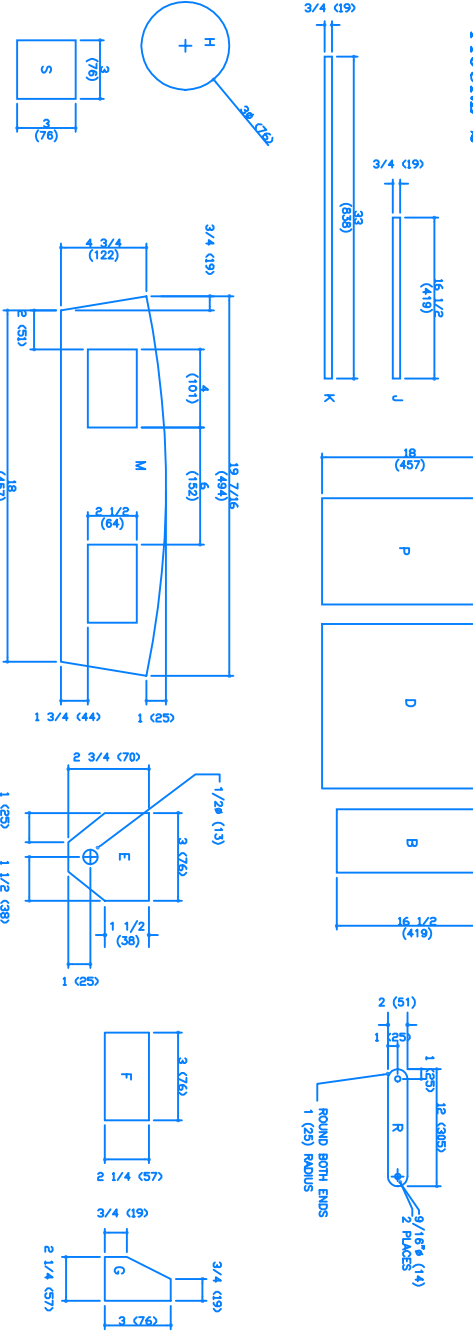
**MATERIAL LAYOUT**

**FIGURE 1**



**MATERIALS**

**CUTTING DIAGRAM FIGURE 2**



**MATERIALS LIST**

- One 4' x 8' sheet 3/4" G2S plywood
- Approx. 1/4 lb. 1/2" finishing nails
- One Box 1-1/2" #8 finished screws
- Two 36" x 1-1/4" piano hinges and mounting screws
- One 2x4 sheet of 1/4" plywood
- Two Spring Tension Lid Supports

**MATERIALS LIST**

- Four 3" Casters & 3/4" Mounting Screws
- Two pieces 1/2" x 1 1/2" long Hardwood dowel
- Wood filler & Sandpaper
- Paint & Brushes
- Carpenter's Glue

**TOOLS**

- Pencil, Tape & Square
- Table saw and jigsaw
- Drill & Compass
- 1/16, 5/64, 1/2, 9/16 drill bits
- Hammer & Screwdrivers
- Nail set
- Four 36" Bar Clamps