

Project 17309EZ: Television Stand

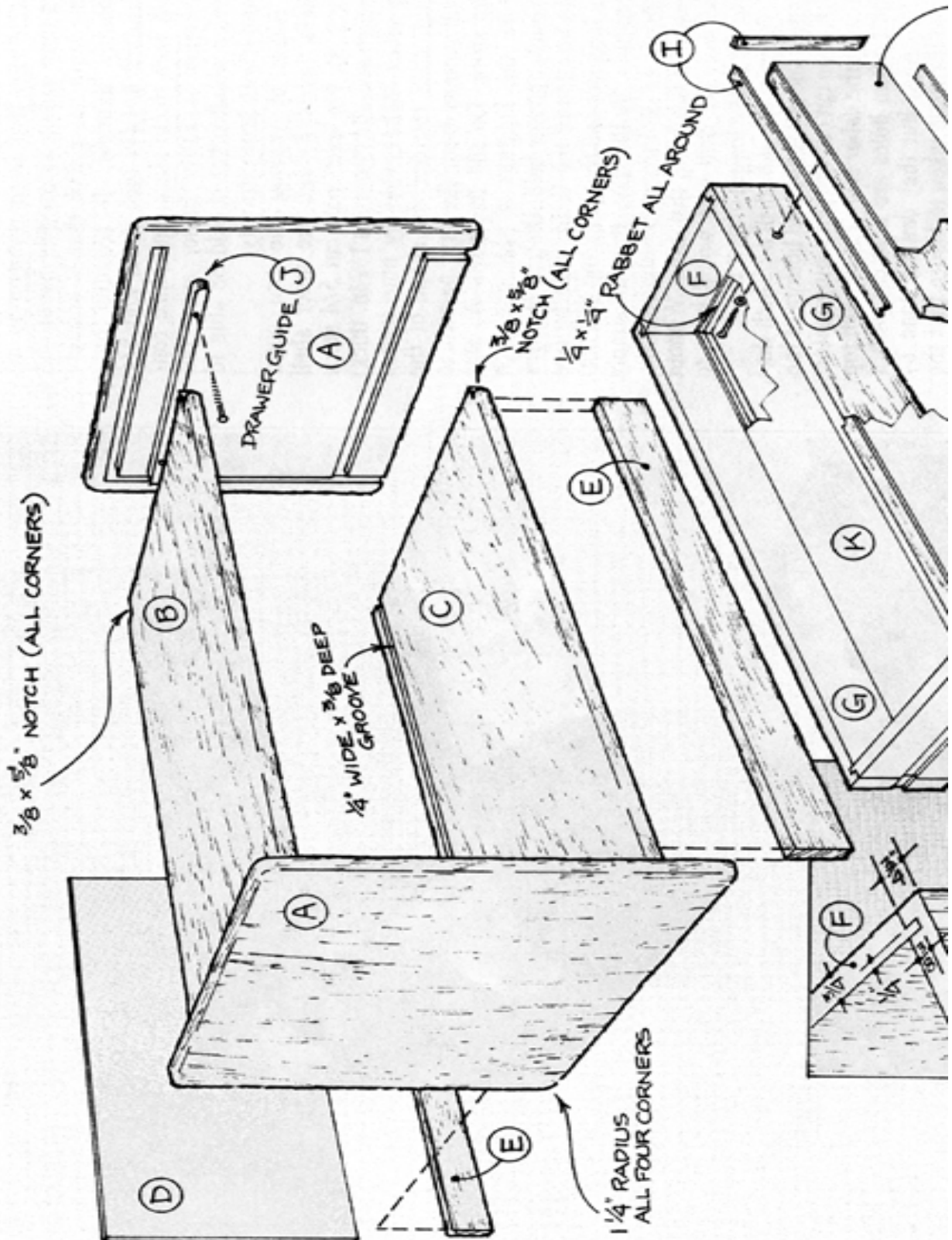


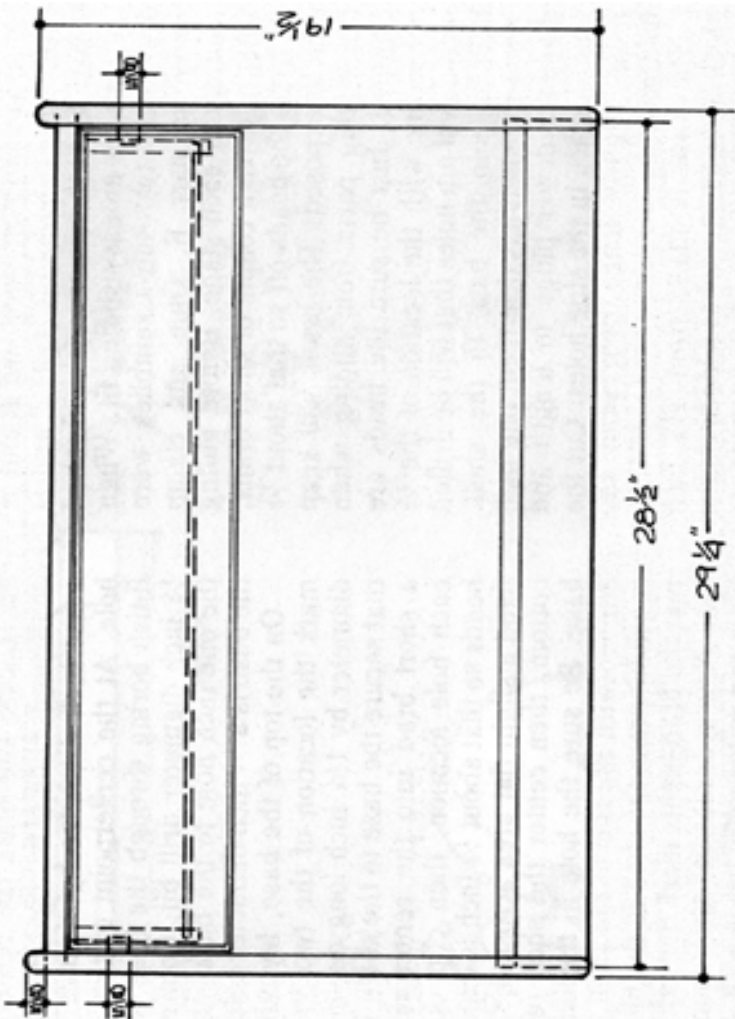
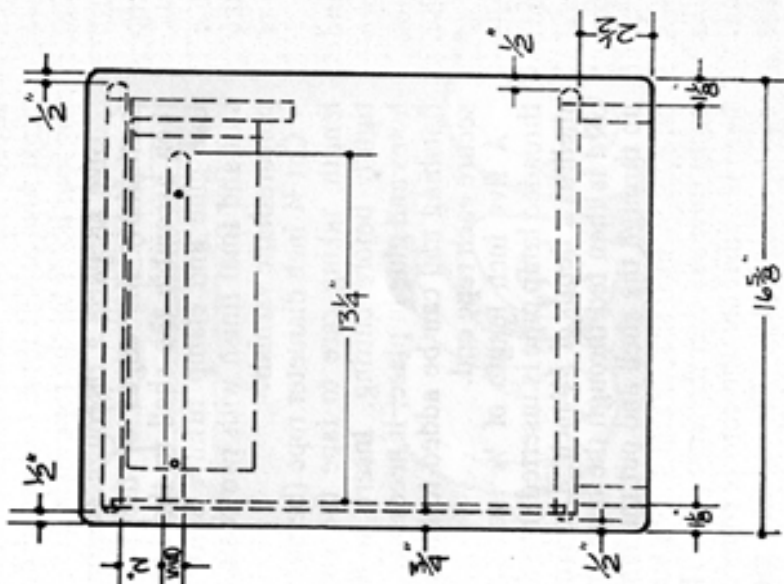
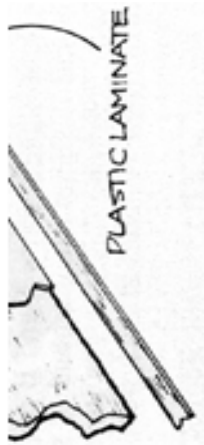
This handsome stand is sturdy enough to take even the heaviest television. There's a spacious shelf on the bottom to accommodate video equipment, books or magazines, and a convenient drawer to store things out of sight. We used #2 common white oak for all parts.

Television Stand Materials List

Part	Description	Size	No. Req'd
A	Sides	3/4" x 16-5/8" x 19-1/2"	2
B	Top	3/4" x 15-5/8" x 28-1/2"	1
C	Bottom	3/4" x 15-5/8" x 28-1/2"	1
D	Back	1/4" x 15-5/8" x 28-1/2"	1
E	Base	3/4" x 2-1/2" x 28-1/2"	2
F	Drawer Sides	3/4" x 5" x 12"	2
G	Drawer Front and Back	3/4" x 5" x 27-1/4"	2
H	False Drawer Front	3/4" x 6" x 27-5/8"	1
I	Drawer Front Trim	1/8" x 3/4"	As required.
J	Drawer Guide	5/8" x 3/4" x 13"	2
K	Drawer Bottom	1/4" x 11-3/4" x 26-1/4"	1

Television Stand Complete Schematic





Television Stand Step-by-Step Instructions

1. Edge-joint enough stock to achieve the required widths for the sides (A), top (B), and bottom (C).
2. Joint edges and glue up the required width.
3. Trim parts A, B, and C to size.
4. Lay out the cuts to be made on the inside faces of the sides (A). **NOTE: The plywood back (D), which is glued into a dado all around, gives the piece considerable strength, and also means that there will be a left and a right side for parts A. Don't make them both the same or you'll be losing the money you saved by buying common lumber.**
5. Equip the router with a sharp carbide 3/4" dado bit to begin making the 3/8" deep x 3/4" wide groove.
6. Use an edge guide to control the placement of the bit, or clamp a straight edge at the appropriate distance from the cut.
7. Lower the bit slowly in to the stock to start the cut.
8. Run the bit to the end of the cut, then back the router up slightly and let the bit stop before lifting the router. **NOTE: The sharp carbide bit will be able to remove all the material in one pass if driven by a one horse-power or larger motor. If you use a smaller machine make the cuts in two or more passes.**
9. Use a 1/4" straight bit for the back (D) and run the groove into the grooves already made for the top and bottom.
10. Use the same setup to groove top surface of the bottom.
11. Change the setting on the edge guide to make the groove in the underside of the top, which is 1/2" closer to the edge than it is on the sides.
12. Use a 3/8" radius rounding-over bit to round over the edges.
13. Cut the back (D) to size.
14. Cut the base piece (E).
15. Sand all pieces cut thus far.
16. Glue up the sides (A), the top (B), the bottom (C) and the back (D).
17. Clamp and let dry overnight.
18. Glue the base piece (E) in place.
19. Measure the carcass to make sure everything is in order to make the drawer.
20. Cut the drawer bottom (K) to length and width.
21. Use a rabbet and dado joint to groove all around the inside on the drawer bottom (K).

22. Cut the remaining drawer parts (F and G) to length and width.
 23. Dry fit parts F and G with the drawer bottom (K).
 24. Make adjustments as necessary.
 25. Glue up the drawer parts, clamp, and allow to dry.
 26. Make sure the assembly is square and sits on a flat surface while the glue is drying.
 27. Cut out the stock for the false front of the drawer (H) from particleboard or plywood.
 28. Cover the false drawer front with white plastic laminate.
 29. Edge the front with 1/8" thick oak strips.
 30. Dado the sides of the drawer 3/8" deep x 3/4" wide for the guides.
 31. Use two 1/4" x #8 flathead wood screws to mount the drawer front to the face of the drawer.
 32. Cut the drawer guides (J) to size.
 33. Use two 1" x #6 flat head wood screws to fasten the guides to the sides (A).
 34. Install the drawer and check for a good sliding fit. If there is any tendency to bind, the drawer guides can be slightly sanded or shaved as needed.
 35. Give the entire project a thorough sanding.
 36. Use a sharp chisel to remove any areas of glue squeeze-out.
 37. Final sand with 220-grit sandpaper.
 38. Final finish with a quality penetrating oil, which will soak into the wood and then harden to form a durable finish that looks most attractive on a piece like this.
 39. Apply a coat of wax to the drawer guides to keep the drawer operating smoothly.
 40. Install four casters to the bottom so that the base is 1/2" off the floor if you would like the cart to roll around.
-