



Kitchen Bookends

MDF Panels are ideal for furniture, moulding, trim, cabinets and other interior projects. Its composition gives the panel surface a smooth, consistently light color with no variation in tone that takes paint beautifully. MDF panels machine, sand, dado, mitre and polish like a dream! MDF is the ideal panel for many do-it-yourself furniture projects.

MDF panels are omnidirectional. There is no grain direction, no growth rings, no end porous section and no definite layered structure, meaning that MDF can be shaped and finished without the grain and pitting problems associated with solid lumber or particleboard. MDF also provides a more stable core and a superior surface for painting and laminating. Used for many years by professional cabinet and furniture makers, MDF panels are perfect for the home crafter.

This bookend, designed for heavy use in the kitchen, will help you to organize any counter surface while keeping your cookbooks handy!

Materials Checklist

- 1—12" x 5 $\frac{3}{4}$ " MDF base panel
- 2—6 $\frac{1}{2}$ " x 5 $\frac{3}{4}$ " MDF endboards
- 4—1 $\frac{1}{2}$ " nails
- Fine sandpaper
- Wood glue
- Wood putty
- Primer
- Latex paint
- Stencil and stencil paints
- Stencil brush or sponge

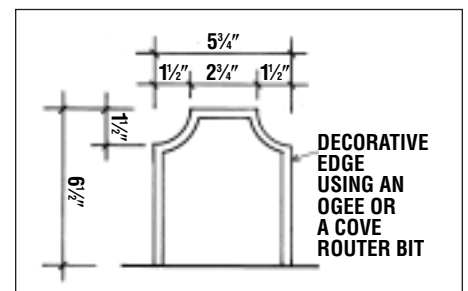


Tools You Will Need

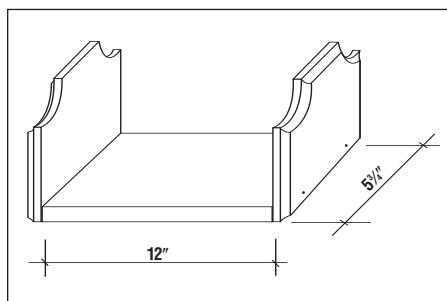
- Circular, skill or table saw with a carbide tipped blade
- Saber saw, jigsaw or scroll saw
- Router with decorative tip of your choice
- Power drill
- Screwdriver
- Safety goggles

Instructions

1. Cut the MDF panel to the above dimensions.
2. On the two endboards, draft out the curved cut-outs.
3. With a saber saw cut out the decorative details.
4. Prior to routing the edges, sand edges smooth with fine sandpaper
5. With your decorative bit, rout the top outer edges, and the sides of both endboards.
6. Sand all edges and surfaces prior to painting.
7. Glue end boards to base panel.
8. Secure end boards with 1 $\frac{1}{2}$ " nails as shown. Countersink nails slightly.



9. Use wood putty over nails. Let dry. Sand surface smooth.
10. Prime all surfaces, including bottom of base panel.
11. Paint decorative finish with stencils or free hand design of your choice.



Always follow these safety suggestions:

- Follow good construction practices.
- When using power tools, adhesives and finishing materials, be sure to follow manufacturer's instructions.
- Always wear safety goggles when using power tools or a hammer.
- Always use the right tool and/or equipment for the job.

MDF Construction Tips

Cutting: For best results use a carbide tipped combination blade, feeding the material at a uniform speed through saw. Solidly back panels to prevent chipping along kerf on the saw-tooth exit side or use scoring saws.

Drilling: A high-speed drill (3000 Rpm) is recommended. To avoid chipout or breakage in the exit side, back the panel with scrap material.

Routing: A speed of 20,000 Rpm is recommended, using double-fluted router bits, Z type. Hook and clearance angles of the bit are most important.

Edge Finishing: The exposed edges of MDF panels are intended to be finished, unless the application (i.e. industrial shelving) does not require a finished appearance. Sanding and painting the edges will provide a superior edge finish. Square-cut edges can be slotted to receive metal or plastic T-strips, or they can be taped and/or painted, or banded with lumber strips.

Fastening: Nails, staples, rivets, screws, bolts and glue can be used to fasten MDF panels. If nailing, use spiral or ring shank nails for extra holding power. Course thread drywall screws are recommended for use with MDF panels.

Laminating: MDF panels, being uniform in thickness and surface texture, are particularly adaptable to high and low-pressure laminates. Generally all thermoplastic and thermosetting adhesives and contact cement perform well when laminating to MDF. Customers should consult their adhesive suppliers when in doubt.



Corporation
 Building Products
 55 Park Place, N.E.
 Atlanta, GA 30303
1-800 BUILD GP
www.gp.com/build