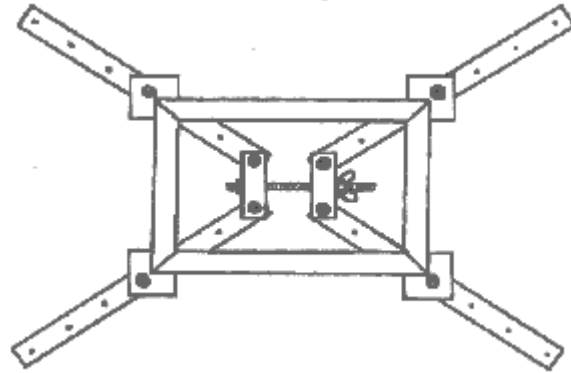


# Picture Frame Clamp

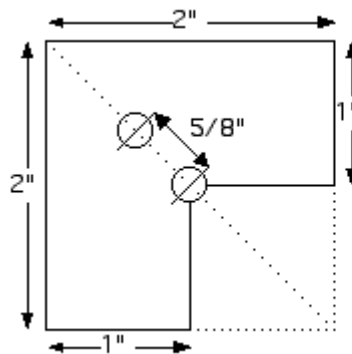
This is a handy easy to make clamp for picture frames with mitered corners, I have recommended 3/4" plywood material because it is easy to obtain, thicker material will give more stability for larger frames. If you use a different material route either use longer bolts or drill the inset holes deeper. To prevent excess glue that is sticking to the arms place squares of waxed paper under the corners of the frame where it contacts the arms.



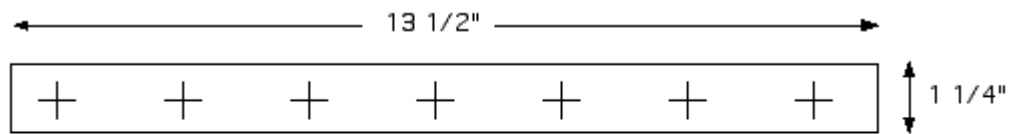
## Material List

- 4 - 2" X 1/4" Carriage bolts
- 4 - 2 1/2" X 1/4" Carriage bolts
- 5 - 1/4" Hex nuts
- 5 - 1/4" Wing nuts
- 10 - 1/4" Flat washers
- 6" X 1/4" ready rod

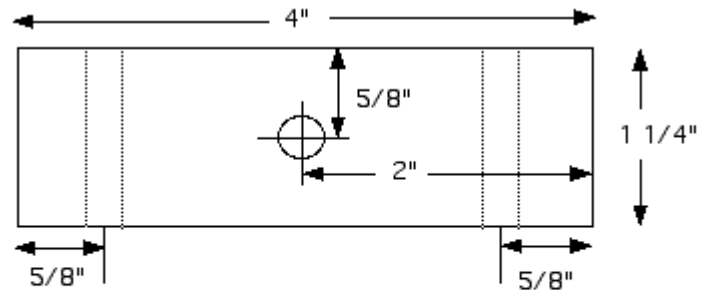
## Assembly



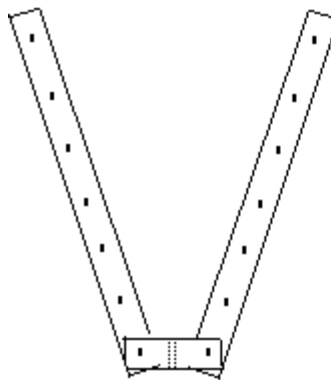
Cut four corner blocks 2" square from 3/4" thick plywood. Mark diagonal line from corner to corner and drill two 1/4" holes as shown. Trim 1" notch from each piece making cuts as precise as possible.



Cut four pieces 13 1/2" X 1 1/4" from 3/4" thick hardwood, mark off as shown starting at 1/2" from end and spaced 2" apart. With a 3/4" spade bit drill holes at each mark 3/16" deep, then drill through with a 1/4" bit.



Cut two hardwood pieces 1 1/4" square by 4" long, drill a 5/16" hole through center and two 1/4" holes 5/8" from ends of adjacent sides.



Fasten connector block to arms using 2 1/2" long carriage bolts through hole 1/2" from end of arms using a washer and hex nut.

Join two assembled arm units with 6" ready rod with washer and hex nut at one end and washer and wing nut at other end.

Install corner blocks at corresponding holes for size of frame to be clamped with 2" carriage bolts using washer and wing nuts.