

Hardwood Plywood Bookcase/End Table Project for Beginning & Intermediate Woodworkers

NOTE

All hardwood plywood panels are nominal 1". Actual thickness is 3/4". Measurements given indicate widths and lengths - 3/4" thickness is consistent throughout unless otherwise noted. Read instructions completely before beginning cutting.

HARDWOOD LIST

- (8) 1" x 10" x 2'
- (4) 1" x 12" x 2'
- (1) 1" x 10" x 3'

MATERIALS LIST

- Wood Glue
- (96) 1-1/4" Wood Screws
- (96) Wood Plugs

CUTTING LIST

- A. (4) 9-1/4" x 24" Sides A
- B. (2) 8-1/8" x 24" Sides B
- C. (2) 7-3/4" x 24" Sides C
- D. (4) 7-3/4" x 8-1/2" Shelves
- E. (8) 10-1/2" x 10-1/2" Top/Bottom Panels
- F. (8) 3/4" x 3/4" x 7" Cleats
- G. (16) 3/4" x 3/4" x 2-1/2" Cleats
- H. (4) 2" x 2" Feet



Georgia-Pacific

We make the things that make you feel at home.™

SIDES

Set aside (4) 1" x 10" x 2' boards (actual dimensions is 9-1/4" wide) for Sides A. Next, rip two (2) 1" x 10" x 2' boards to 8-1/8" each (Side B). Finally, rip two (2) 1" x 10" x 2' boards to 7-3/4" each (Side C).

SHELVES

Rip the 1" x 10" x 3' board to 7-3/4", then cross cut it into four (4) 8-1/2" long shelves (D).

CLEATS

Take the leftover pieces from the ripped boards and rip to 3/4". This will give a 3/4" x 3/4" board. Next, cross cut eight (8) pieces to 7" in length (F) and 16 pieces to 2-1/2" (G).

TOP/BOTTOM

Take the four (4) 1" x 12" x 2' boards and rip them to 10-1/2", then cross cut eight (8) 10-1/2" pieces for the top and bottom panels (E).

FEET

With the remaining scrap, cut four (4) 2" x 2" blocks (H).

PROJECT PLANS & CUTTING LIST

ASSEMBLY

Center the cleats 11-1/4" from the bottom and at the top of each side. On 9-1/4" sides (A), place the 2-1/2" cleats on one side only. On 7-3/4" and 8-1/8" sides (C & B), place 2-1/2" cleat on one side and 7" cleat on the opposite side. (*See diagram for help.*) Connect two of sides A with sides B. Connect final two sides (A) with sides (C) as shown in diagram. Next, place shelf on one of the cleats. Connect with screws and glue from underneath. Plug holes with wood plugs. repeat this for the remaining three shelves. Take four of the tops rotating grain patterns. Place tops lapping 3/8" in middle and overhanging 1-3/8". Connect with screws and glue from underneath. Turn upside down and do bottom same as top. Place the 2" x 2" feet 2" in from each side.

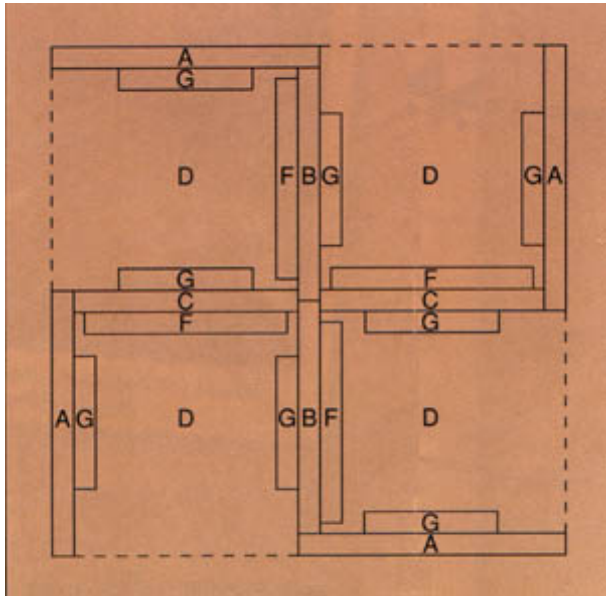
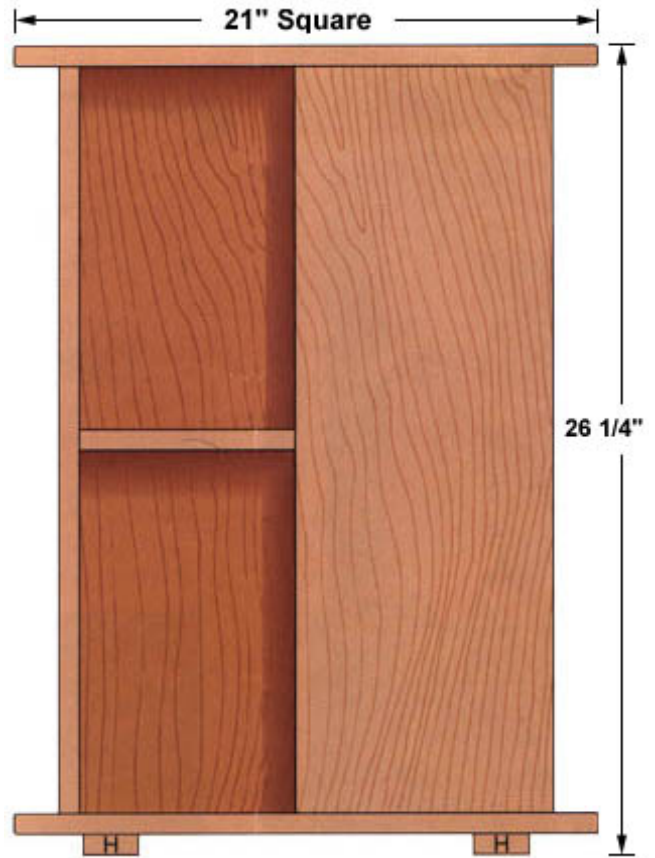
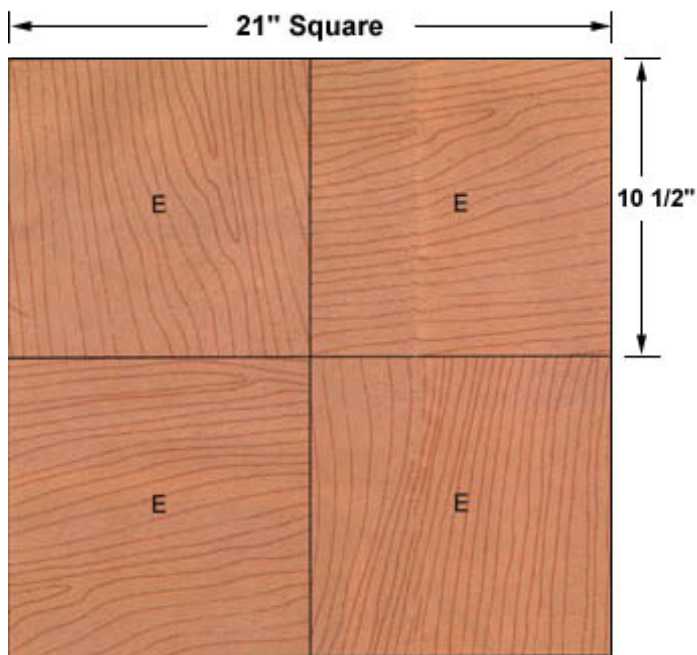
FINISHING

Finish with two coats of golden oak stain. Seal with polyurethane.

THINK SAFETY FIRST

Always wear safety glasses when hammering, sawing, sanding or operating any electrical equipment in the shop.

Available at your dealer.



CUT LIST

- A. (4) 9-1/4" x 24" (side A)
- B. (2) 8-1/8" x 24" (side B)
- C. (2) 7-3/4" x 24" (side C)
- D. (4) 7-3/4" x 8 1/2" (shelf)
- E. (8) 10-1/2" x 10 1/2" (top/bottom)
- F. (8) 3/4" x 3/4" x 7" (cleat)
- G. (16) 3/4" x 3/4" x 2-1/2" (cleat)
- H. (4) 2" x 2" (feet)