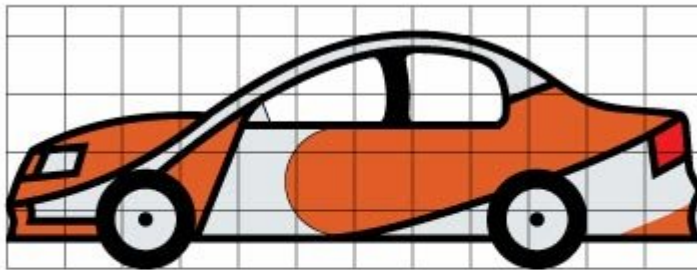


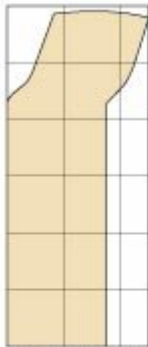
# Racing car bed



Many kids dream about being a racing driver (and perhaps some of the bigger ones too!). Give your children a head start with a bed that will ensure they go to sleep fast. The bed can simply be a surround for a standard single bed ensemble, or you can make the whole bed, complete with timber slat



Each square = 200mm  
Item A



Each square = 100mm  
Item B

## GATHER YOUR SUPPLIES

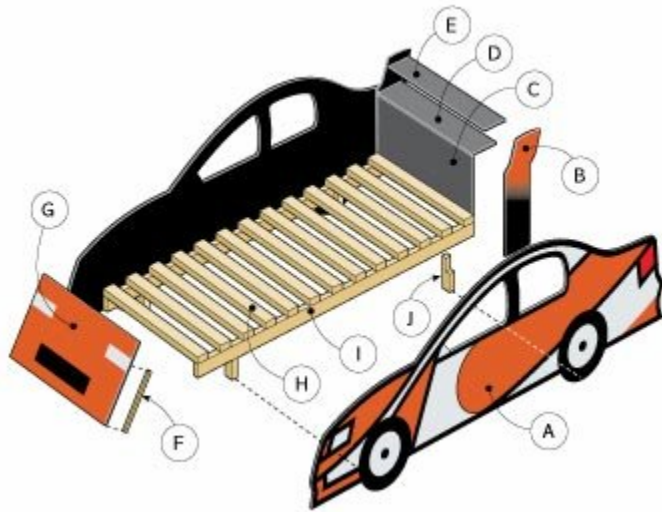
- **A** Body panels (2) 2400 x 810 x 18mm MDF
- **B** Spoiler legs (2) 590 x 250 x 18mm MDF offcuts
- **C** Back 915 x 410 x 18mm MDF offcut
- **D** Shelf 915 x 165 x 18mm MDF offcut
- **E** Wing 915 x 145 x 18mm MDF offcut
- **F** Front cleats (2) 19 x 19 x 300mm pine
- **G** Front panel 951 x 410 x 18mm MDF offcut
- **H** Slats (13) 70 x 35 x 950mm pine
- **I** Rails (2) 70 x 35 x 1900mm pine
- **J** Legs (4) 70 x 35 x 170mm pine

**NOTE:** All panel parts can be cut from two sheets of MDF. Cut main body panels first.

## YOU'LL ALSO NEED

Scraps of plywood; low-tack masking tape; acrylic paint in black, orange, silver and a touch of red; spacer blocks; 340mm-diameter plywood disc (optional)

base.



## Racing car bed



What little champ wouldn't want to sleep in a bed shaped like a V8 Supercar?

### HERE'S HOW

**STEP 1** Scale up the pattern for the body panels (A) from the diagram onto a sheet of MDF. To do this, draw a 200mm grid on the sheet and mark where the curves cross the grid. Join the dots and smooth out the curves. Put the panel on guts so a jigsaw blade clears the benchtop, then cut. Drill 10mm holes in the window openings to allow these to be cut out. Once all the body shapes are cut, repeat for the other side using the first as a template. Similarly, mark out and cut the spoiler legs (B). Then sand smooth the cut edges of the body panels and spoiler.

**STEP 2** Pre-drill for the screw holes with a pilot bit to drill both the clearance and the countersink holes at the same time, then glue and screw the spoiler legs to the ends of the back (C). Make sure you drill pilot holes in the edges of the MDF wherever you screw it, otherwise it will split very easily.

**STEP 3** Glue and screw the shelf (D) to the top of the back and the spoiler legs. Use a square to make sure it is square. Add the wing (E) 120mm above the shelf. To make sure it is level as well, use a builder's square or cut two 20mm-high temporary spacer blocks to

temporarily support the wing over the shelf before screwing on. Screw 2 cleats (F) to front panel (G), so the bottoms of the cleats are flush with the bottom of the panel.

**STEP 4** Paint all the surfaces of the components with 2 coats of acrylic semi-gloss black to seal the MDF. It is also the colour of the interior of the car and also the colour of the tyres and trim. Allow to dry.

**STEP 5** If you are fitting the racing-car cover over an existing ensemble you could, at this stage, watch the paint dry. However, if you

are building the seat base as well, screw the 13 slats (H) to the 2 rails (I) with an 82mm spacing between the slats.

**STEP 6** Cut a 70 x 35mm housing out of the top of each leg (J) by making several parallel cuts with a saw. Remove the waste with a hammer and chisel. This means the legs will support the bed 100mm off the floor. Screw the legs to the rails 320mm from the back and 175mm from the front so they will be located behind the car wheels.

**STEP 7** Use large dinner and side plates of about 340 and 210mm diameter to draw in the rest of the tyre and the nags in the centre of the wheels. Alternatively, make a wheel template ring of thin plywood with radii of 170 and 105mm. Draw in the 4 wheels.

**STEP 8** Use 20 or 25mm-wide low-tack masking tape to define the black lines as per the diagram. The low-tack means that you will not pull off the black paint when the tape is removed. The taped parts will remain black, as the rest of the body is painted in either silver or orange with a patch of red for the tail-light. Tape up the second body panel, but ensure it is the mirror image of the first for the other side of the bed.

**STEP 9** Paint the silver areas, being careful to cut in around the tyres on the outside. At the centre of the wheel, use the end of a sealant cartridge to retain a black wheel centre, then paint in the mag wheels.

**STEP 10** Once the silver paint is dry (bearing in mind that in one or two places you need to cut in the orange against the silver), paint the orange areas. Also paint the front panel

use over the outside. Paint the tail-light red. Don't remove the tape yet because you will need a second coat to get good depth of colour. Paint a 590 x 100mm black grille 100mm up from the bottom of the orange front panel, as well as silver 150 x 80mm headlights 80mm down from the top of each side. Paint the wheel exposed part of the spoiler leg orange as well.

**STEP 11** Carefully peel away the masking tape to reveal the design on the body. There may be some minor bleed through, and this can be touched up with a fine artist's brush in the appropriate colour.

**STEP 12** Put the base on its legs and bring in one of the sides. Align it with the legs and screw from the rail into the body panel. Check the shelf assembly 125mm off the ground with wooden blocks, align with the end of the tail-light support to the body panel. Screw the front panel at a slope to roughly match the rate of the main midplane of the body panel. Use the cleat to screw it to the sides, using in the other side and screw on from the inside. Touch up the paint at the screw holes.

### Racing car bed

