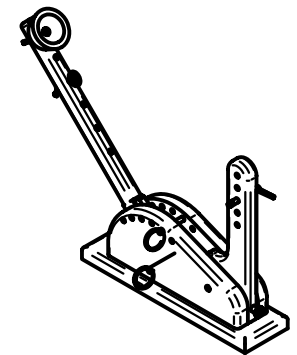
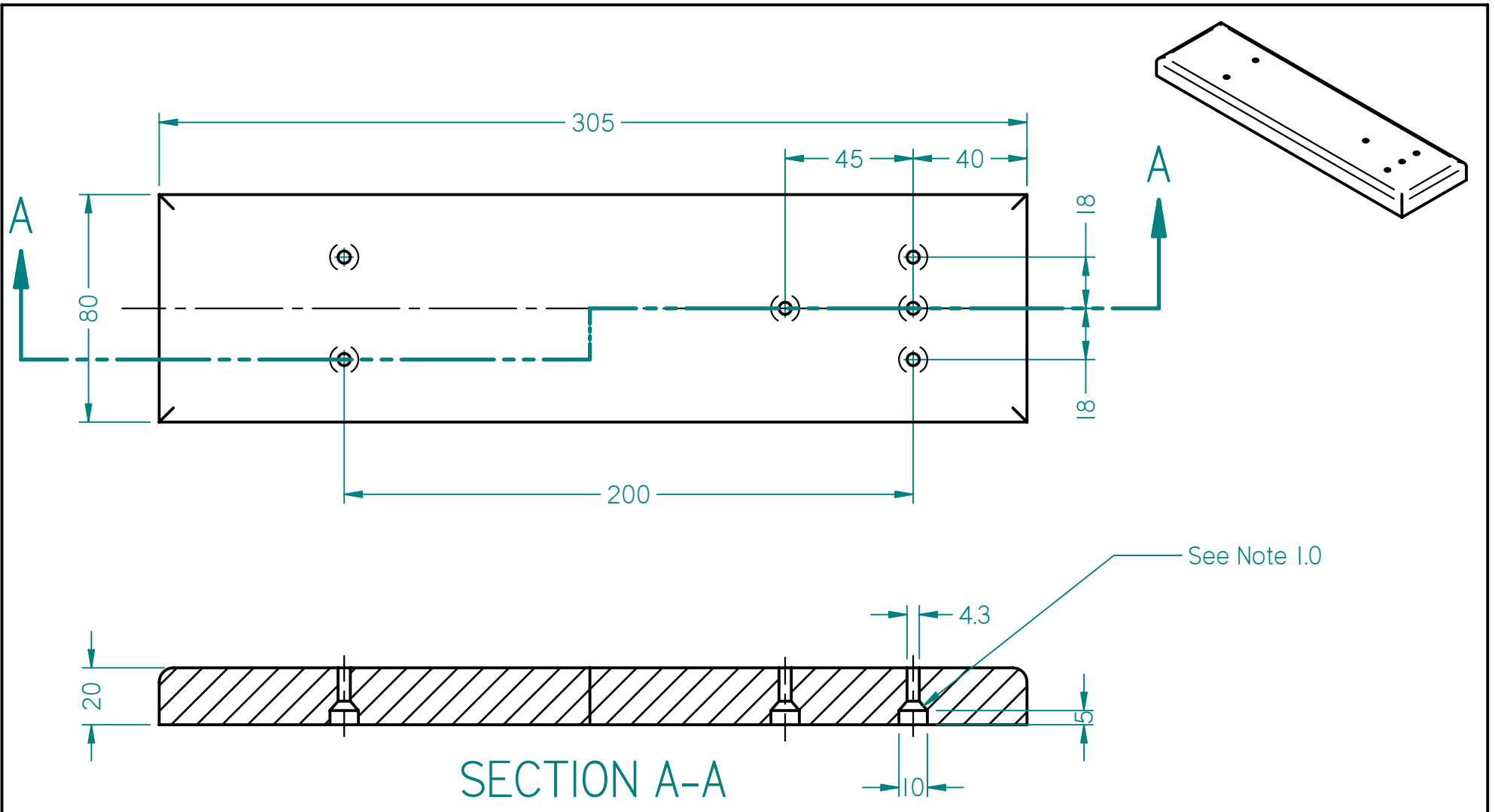


Qty.	Item	Title	Material	Drawing Number
1	1	Base	Wood	100-B01
1	2	Stop Position - Left	Wood	100-SP-01-L
1	3	Tension Post	Wood	100-TP-01
1	4	Arm	Wood	100-A-01
1	5	CUP	Wood	100-C-01
1	6	Bolt	steel	Purchase
1	7	Stop Position - Right	Wood	100-SP-01-R
3	8	Quick Release Pin	steel	Purchase
1	9	Eye_bolt	steel	Purchase
1	10	Rubber Band Holder	Wood	100-RB-01
2	11*	Wing Nut	steel	Purchase
1	12	Stop Bumper	Rubber	100-SB-01



CHECKED BY:	DRAWN BY:	MATERIAL:	FINISH:	DATE:	SCALE:
University of Regina Faculty of Engineering			TITLE:		
				REV. NO.	DRAWING NUMBER:

SOLID EDGE ACADEMY

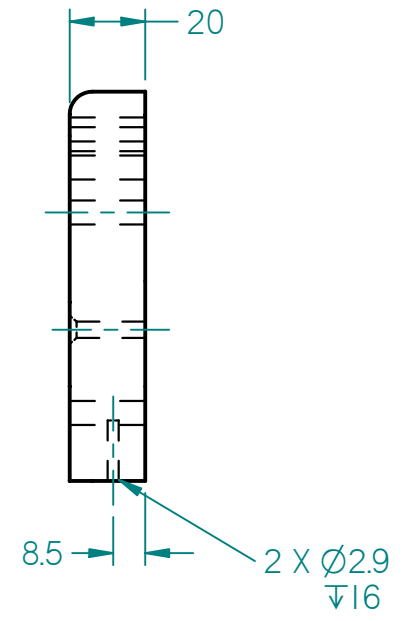
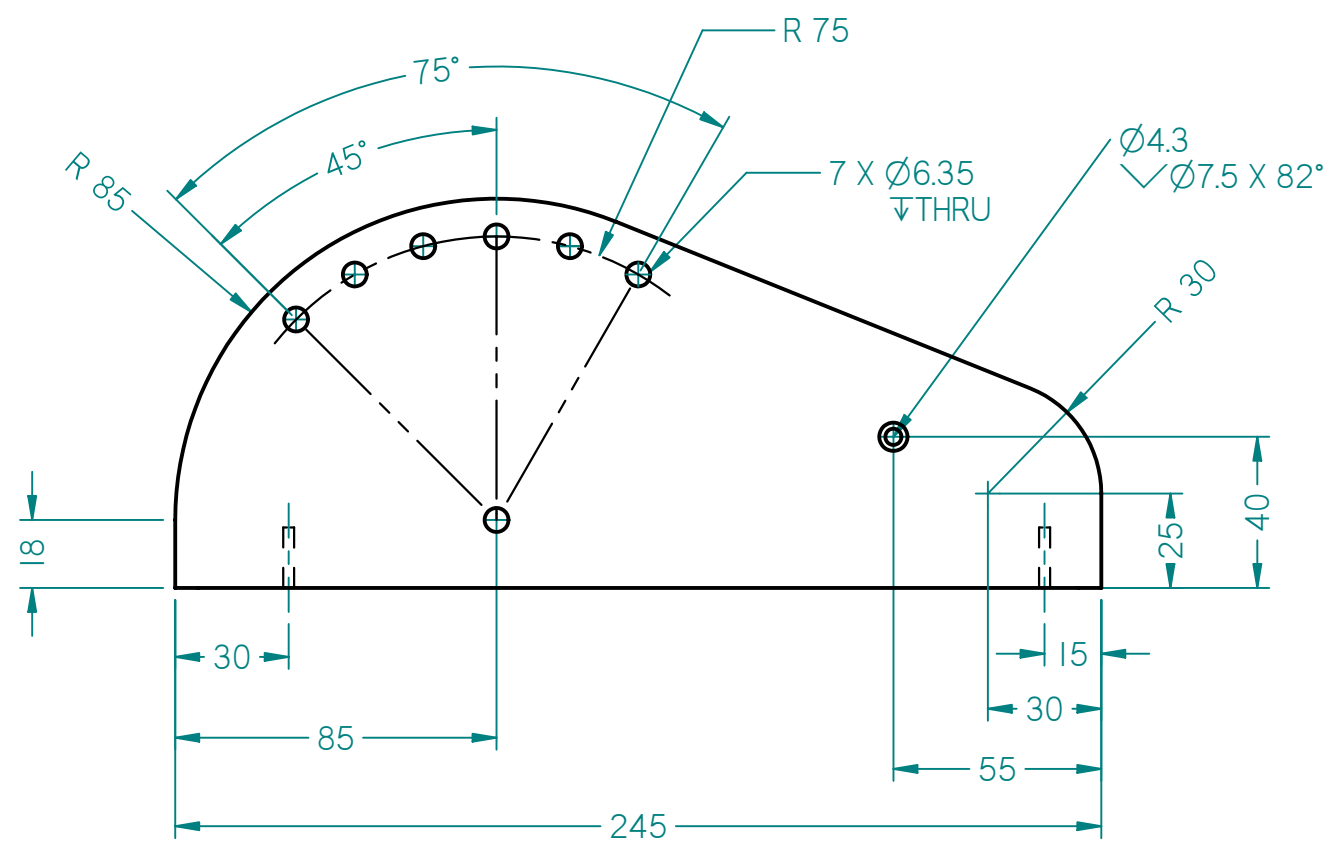
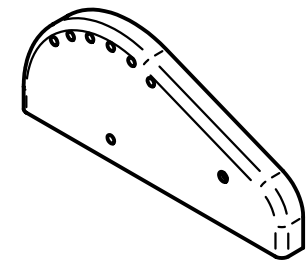


SECTION A-A

NOTE 1.0 - SEE PARTS LIST  
 COUNTERSINK V DEPTH SHOULD EQUAL  
 SCREW HEAD HEIGHT.

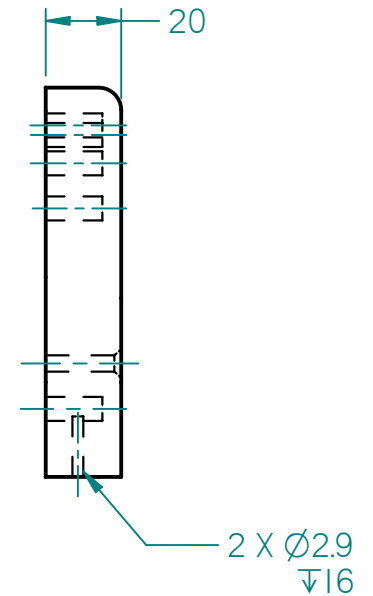
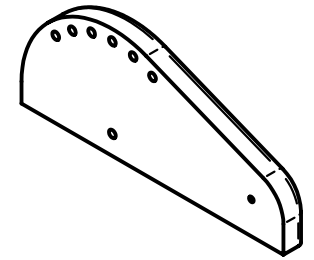
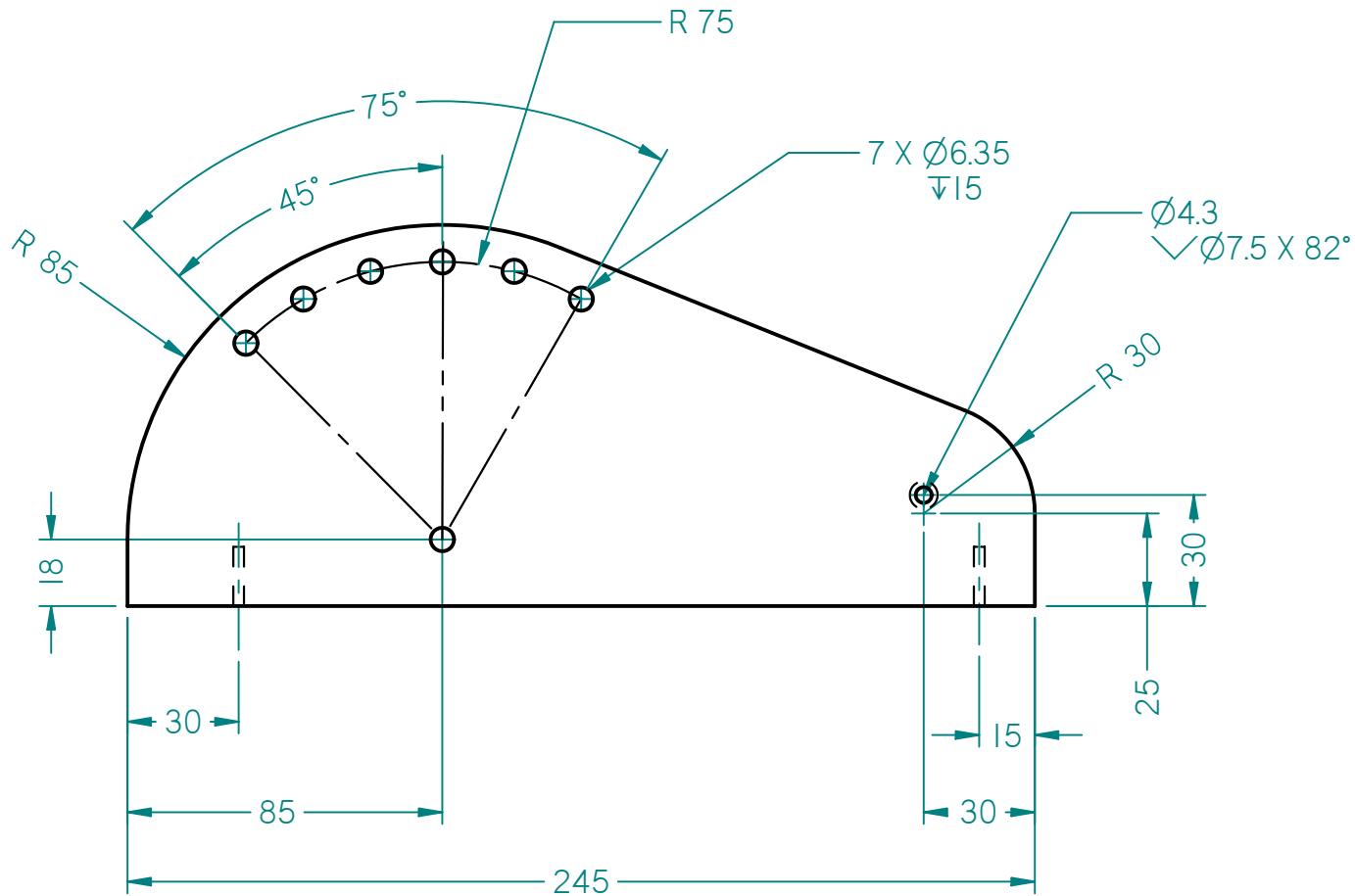
NOTE 2.0: 5 MM ROUND ALONG  
 TOP EDGE

CHECKED BY:	DRAWN BY:	MATERIAL: WOOD	FINISH: STAIN	DATE: 07/12/2002	SCALE: 1 : 2
University of Regina Faculty of Engineering			TITLE: BASE		
			REV. NO.	DRAWING NUMBER: 100-B01	



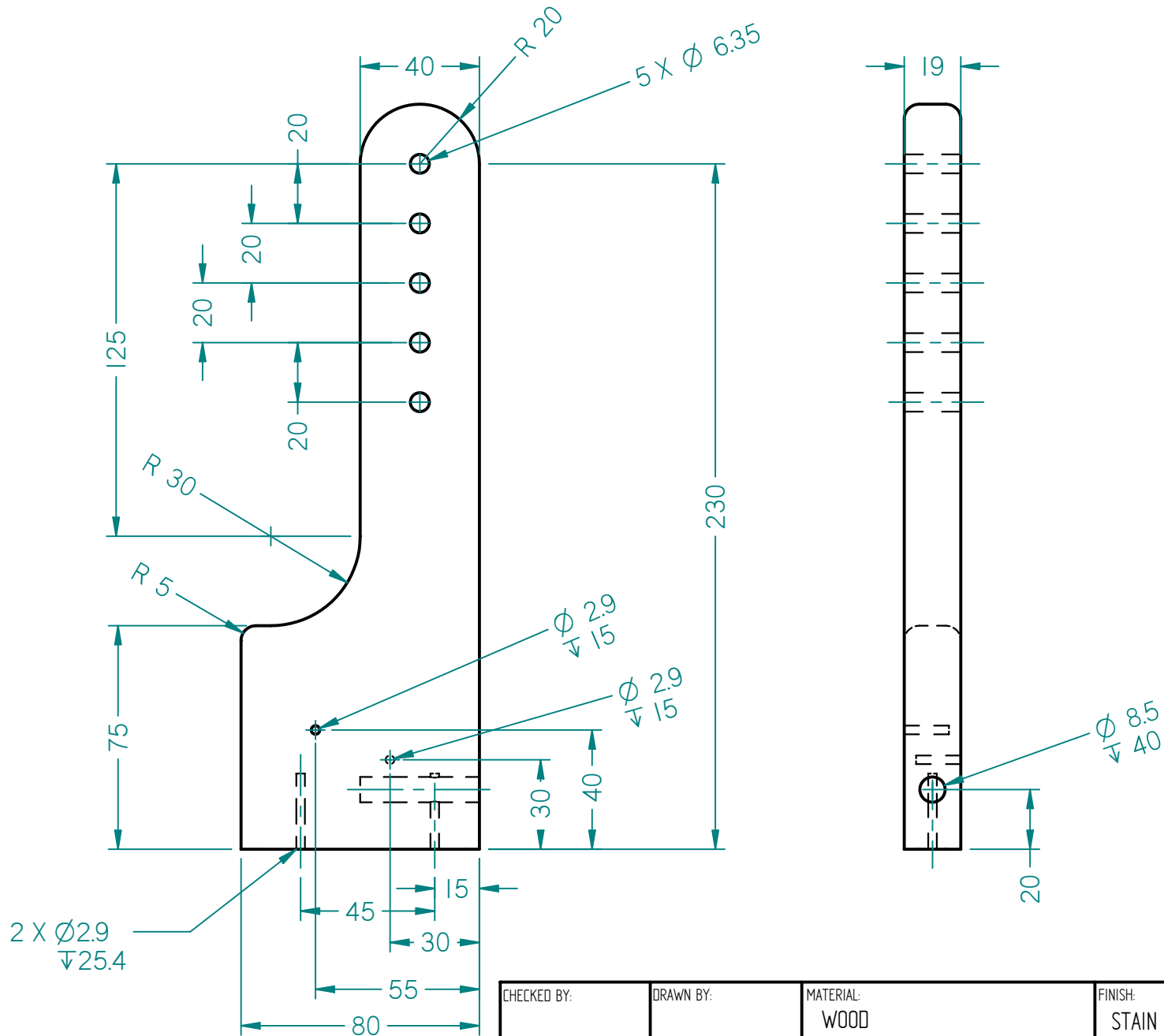
CHECKED BY:	DRAWN BY:	MATERIAL: WOOD	FINISH: STAIN	DATE: 07/12/2002	SCALE: 1 : 2
University of Regina Faculty of Engineering			TITLE: STOP POSITION - LEFT		
			REV. NO.	DRAWING NUMBER: 100-SP-01-L	

SOLID EDGE ACADEMY



CHECKED BY:	DRAWN BY:	MATERIAL: WOOD	FINISH: STAIN	DATE: 07/12/2002	SCALE: 1 : 2
University of Regina Faculty of Engineering			TITLE: STOP POSITION - RIGHT		
			REV. NO.	DRAWING NUMBER: 100-SP-01-R	

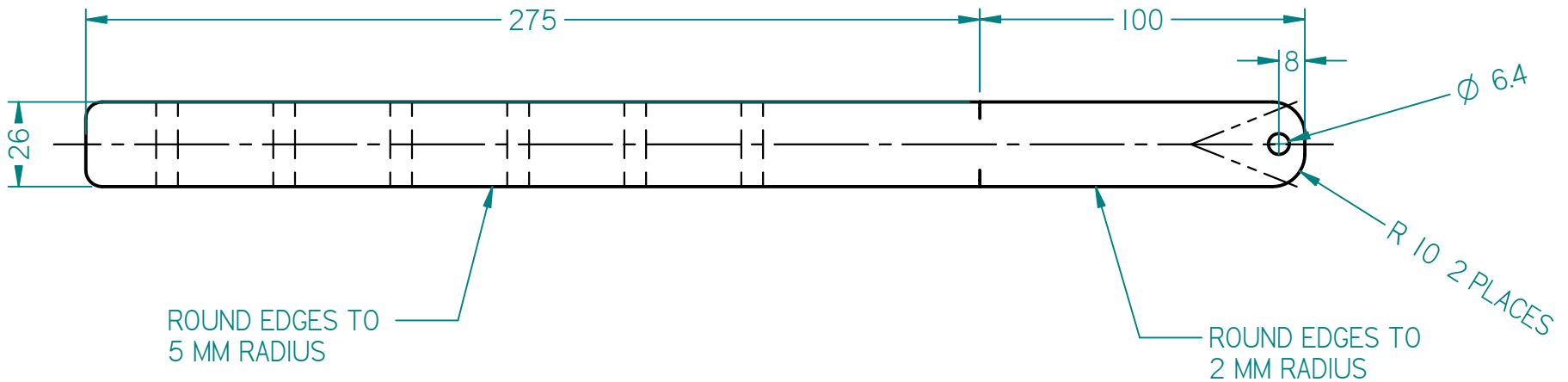
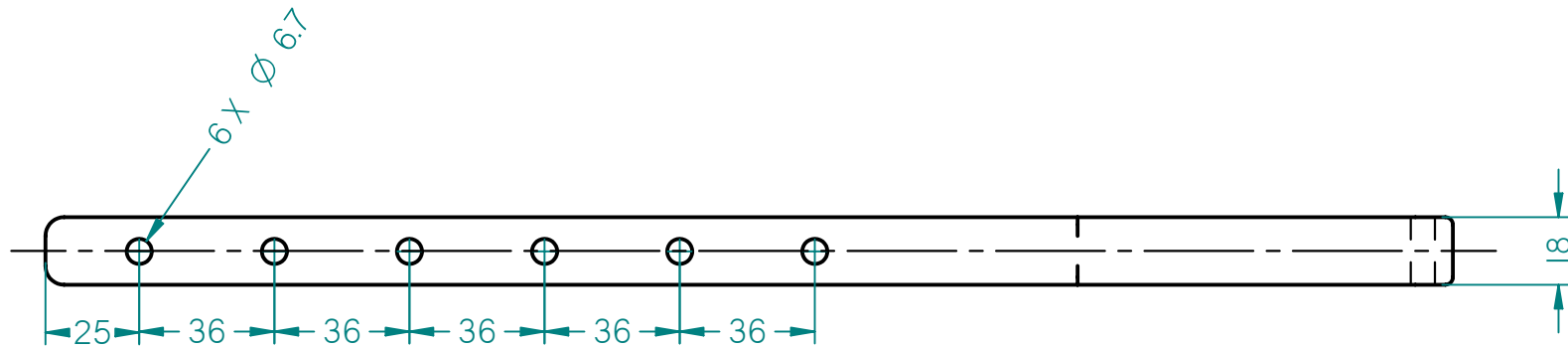
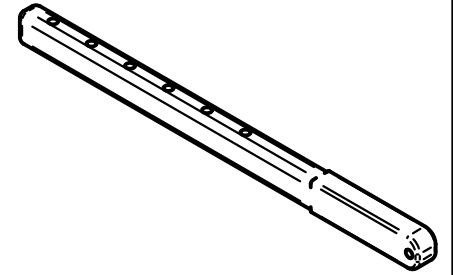
SOLID EDGE ACADEMY



NOTE 1: ALL ROUNDS ARE 5 MM

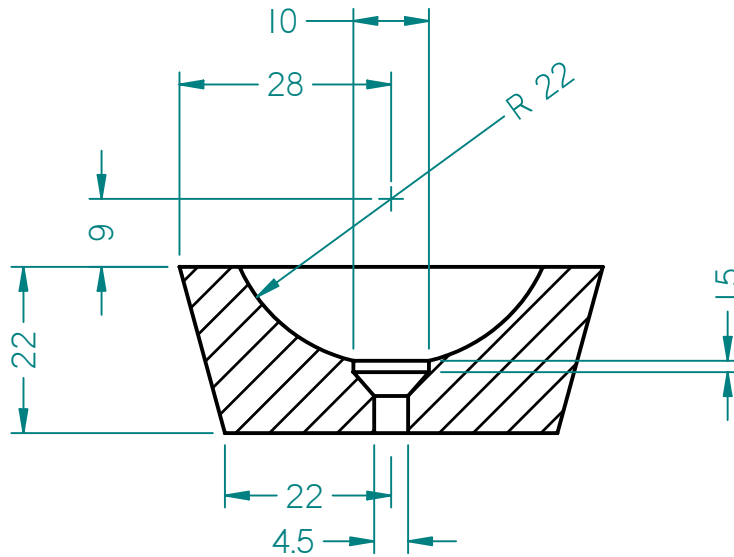
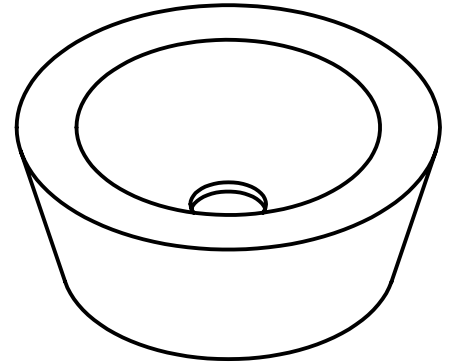
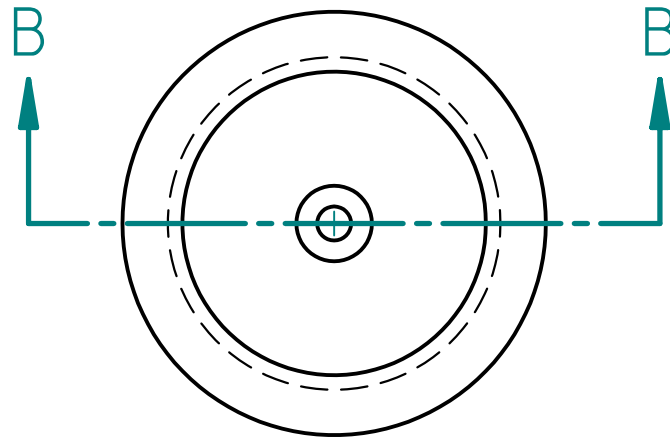
CHECKED BY:	DRAWN BY:	MATERIAL: WOOD	FINISH: STAIN	DATE: 07/12/2002	SCALE: 1 : 2
University of Regina Faculty of Engineering			TITLE: TENSION POST		
				REV. NO.	DRAWING NUMBER: 100-TP-01

SOLID EDGE ACADEMY



CHECKED BY:	DRAWN BY:	MATERIAL: WOOD	FINISH: STAIN	DATE: 07/12/2002	SCALE: 1:2
University of Regina Faculty of Engineering			TITLE: ARM		
			REV. NO.	DRAWING NUMBER: 100-A-01	

SOLID EDGE ACADEMY

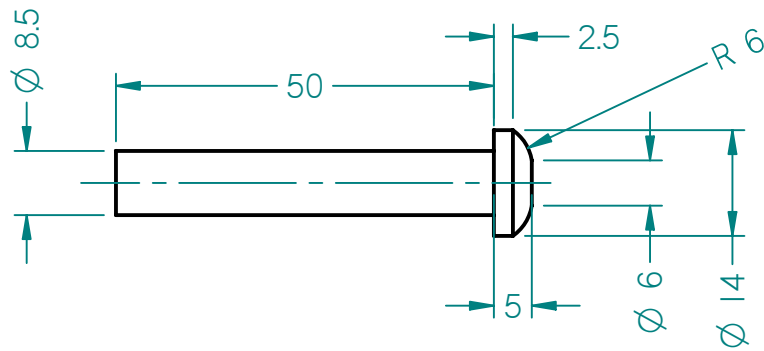
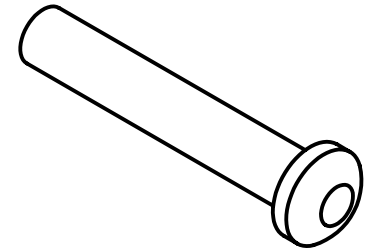


### SECTION B-B

NOTE 1: V DEPTH EQUAL TO OR GREATER THAN THE SCREW HEAD. SEE PARTS LIST.

CHECKED BY:	DRAWN BY:	MATERIAL: WOOD	FINISH: STAIN	DATE: 07/12/2002	SCALE: 1 : 1
University of Regina Faculty of Engineering			TITLE: CUP		
			REV. NO.	DRAWING NUMBER: 100-C-01	

SOLID EDGE ACADEMY



CHECKED BY:	DRAWN BY:	MATERIAL: WOOD	FINISH: STAIN	DATE: 07/12/2002	SCALE: 1:1
University of Regina Faculty of Engineering			TITLE: RUBBER BAND HOLDER		
			REV. NO.	DRAWING NUMBER: 100-RB-01	

SOLID EDGE ACADEMY