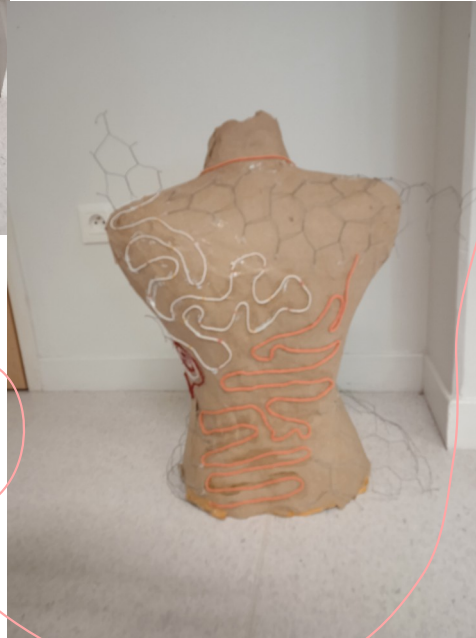


The background is split diagonally from the bottom-left to the top-right. The upper-left portion is light gray, and the lower-right portion is white. A red line swirls across the gray area, and a light green line swirls across the white area. The text is centered horizontally.

# **Au fil de...**

**De Jade Logerot et Emma Guiet**

# Notre Projet



**>Comment conçoit on le fil ?**  
**Tissé, noué, sculpté, coupé,**  
**collé...**  
**Fin, large, en fer, en coton, en**  
**nylon,...**

# Nos références

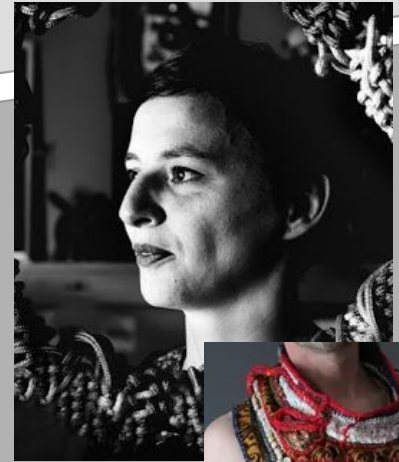


Lady Gaga

Vogue



L'upcycling



Mona  
Luison



Comment a-t-on aborder le sujet, la création de notre projet, etc. ?

“ > *Essentiellement un jeu de contrast entre les fils*

”