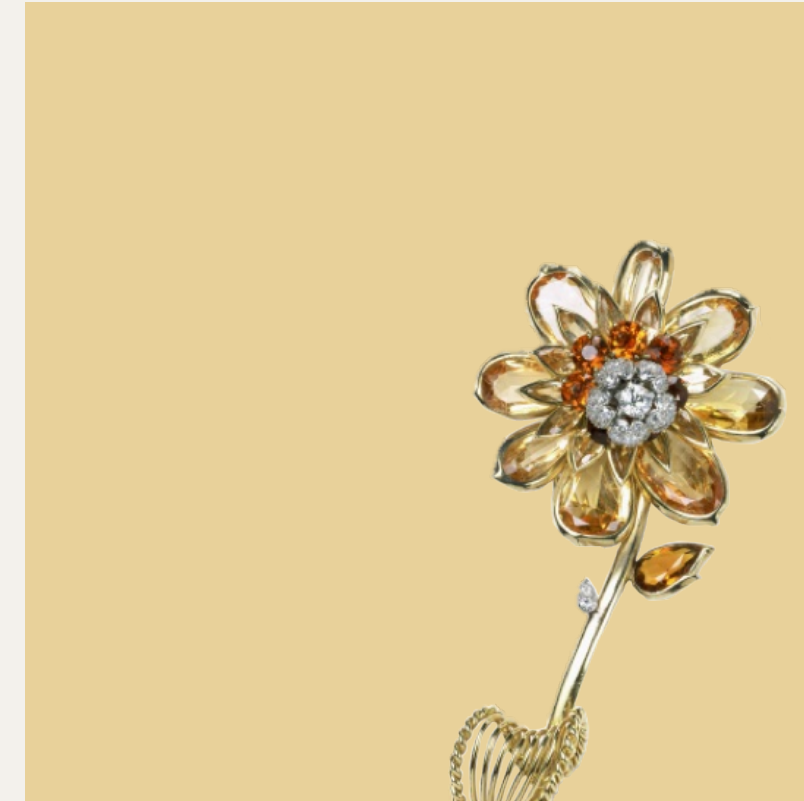


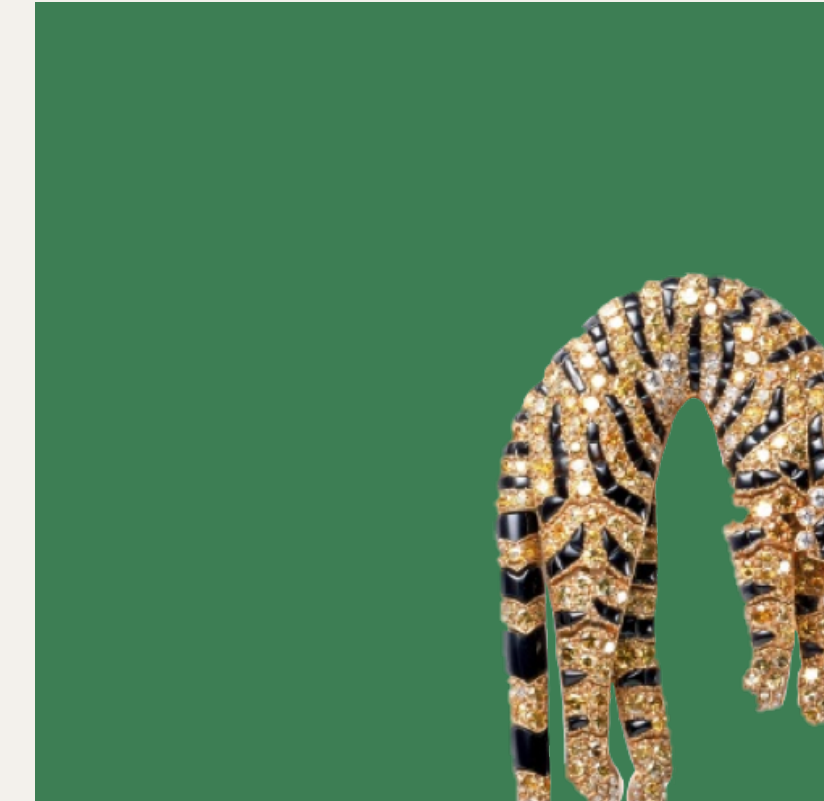
LA NATURE SELON CARTIER



Broche-pince Panthère
Diamants, diamants jaune,
onyx et saphir cachemire de
15é,35 cts
Cartier Paris 1949



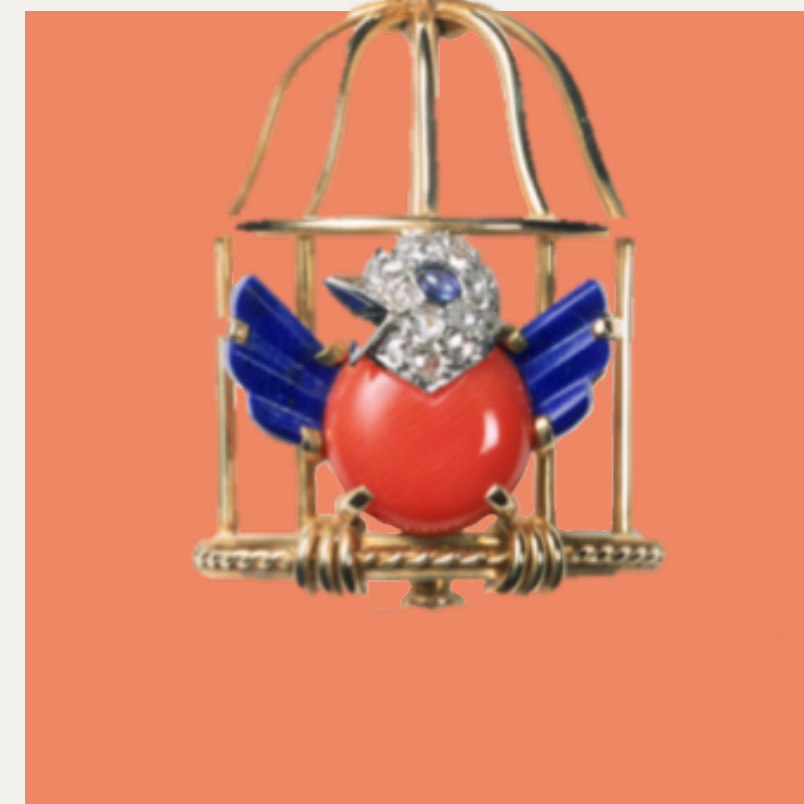
Broche Fleur
Or, platine, diamants, topazes
Cartier Londres 1943



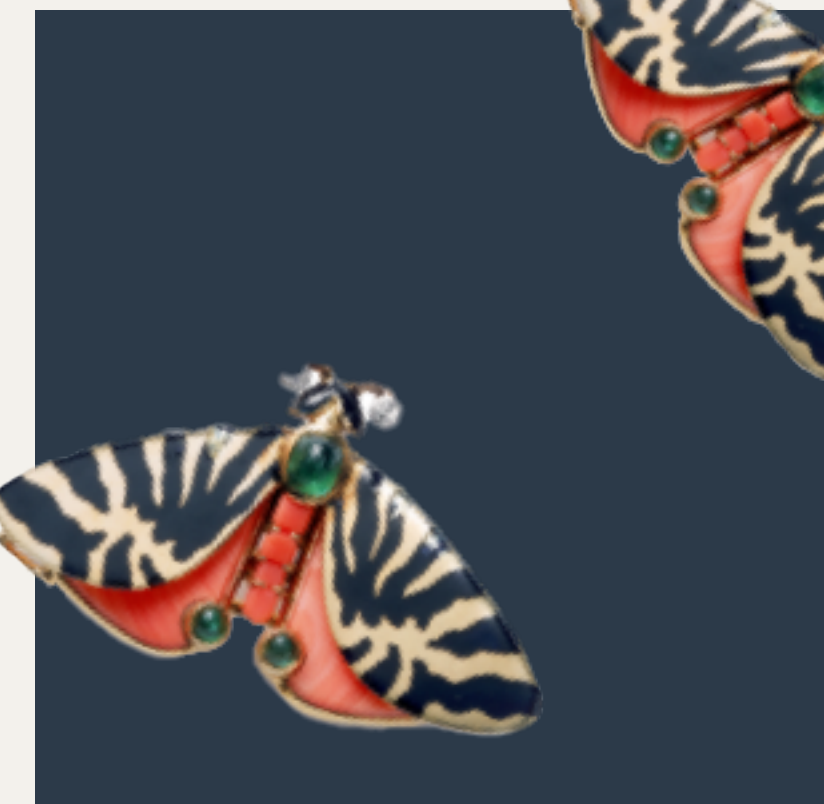
Broche Tigre
Or, diamants jaunes, onyx,
émeraudes
Cartier Paris 1957



Broche Flamant Rose
1940



Broche Oiseau libéré
Or, platine, diamants, saphir,
corail, lapis-lazuli
Cartier Paris 1944



Broche Papillon
Or, platine, corail, email noir,
diamants, émeraudes
Cartier