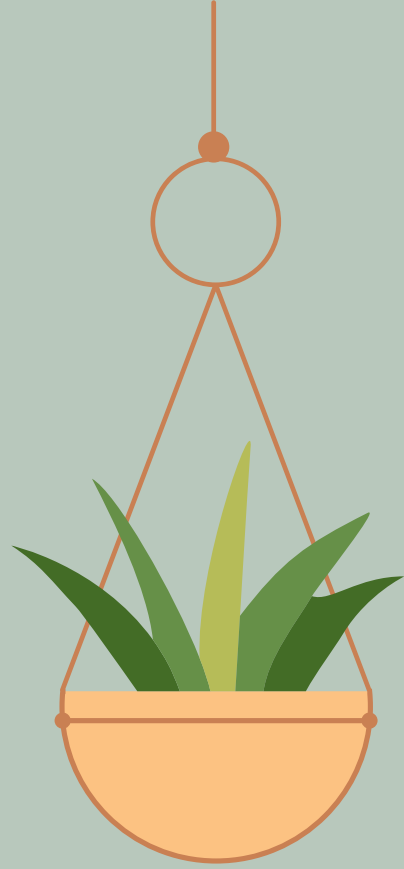


# WHY DO WE WATER PLANTS WITH CLEAN WATER?





The object of the study.

I HAVE BEEN  
STUDYING HOW  
PLANTS REACT TO  
VARIOUS  
SUBSTANCES  
DISSOLVED IN WATER  
THAT ARE OFTEN  
USED IN THE HOME.

Objectives.

TO FIND OUT WHICH  
WATER IS MOST  
SUITABLE FOR PLANTS.



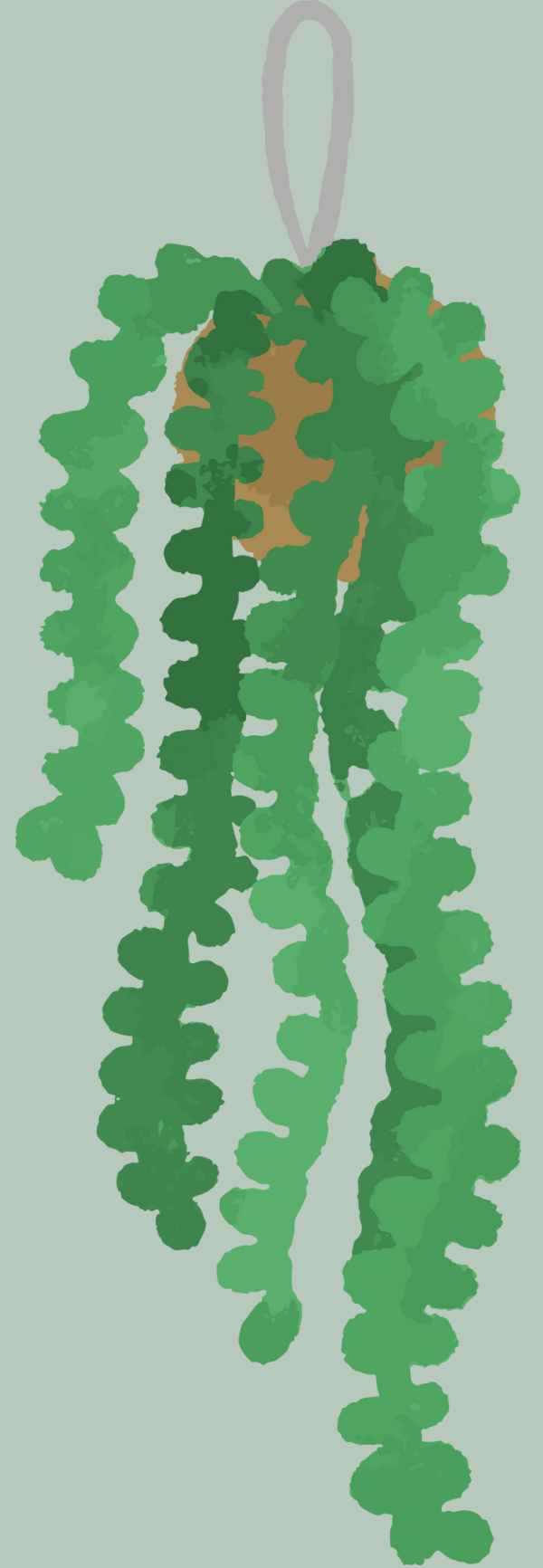
Methods.

TO DETERMINE HOW PLANTS  
REACT TO DIFFERENT  
SUBSTANCES DISSOLVED IN  
WATER.



Instruments.

# OBSERVATION. DATA COLLECTION AND PROCESSING.



Procedure.

4 CUPS, 4 PIECES OF PAPER, 4 PLANT  
BRANCHES, WATER (200 ML), 5 G  
OF SODA, 5 G OF SUGAR, 5 G OF  
SALT, WRITING INSTRUMENT.





Conclusions of the study.

I TOOK 4 CUPS OF WATER.I ADDED SUGAR TO ONE, SALT TO ANOTHER, SODA TO A THIRD, AND NOTHING TO A FOURTH.I WROTE ON THE SLIPS OF PAPER WHAT SUBSTANCE I HAD ADDED TO THEM.I PUT ONE TWIG OF A PLANT IN EACH CUP.I OBSERVED FOR 5 DAYS.



THE PLANT CANNOT SURVIVE IN  
WATER CONTAINING SALT AND  
SODA. PURE WATER AND WATER  
WITH SUGAR DO NOT HARM THE  
PLANT.

