

WaterWise



I- Water sources

ice caps/
glaciers →

snow on the mountains

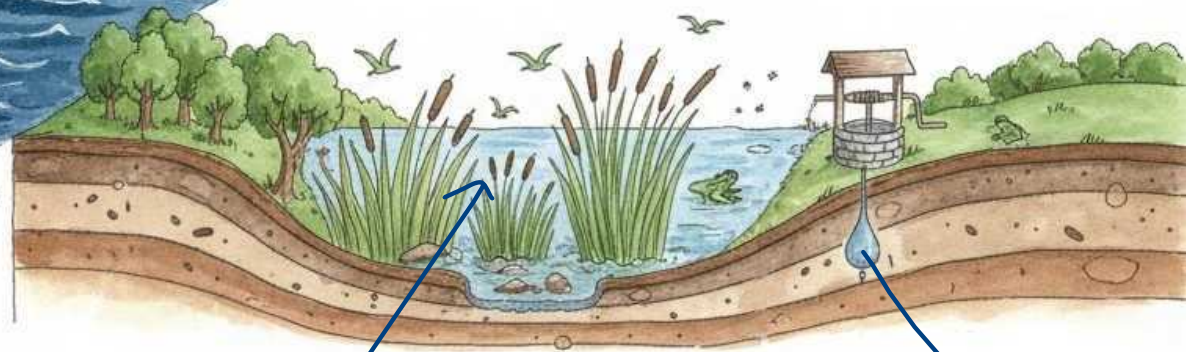
small river =
a river (a stream)



the
Ocean

the sea

a lake
small lake
(a pond)



Wetland

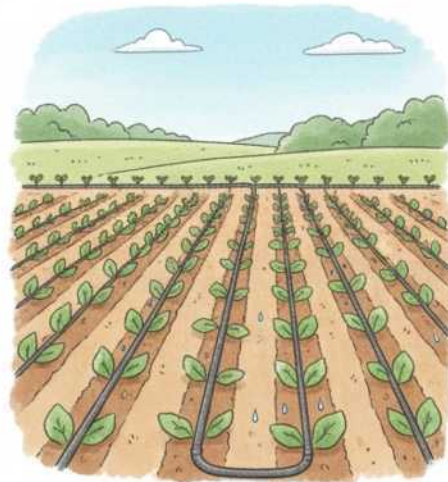
groundwater/
aquifer

2- Water challenges

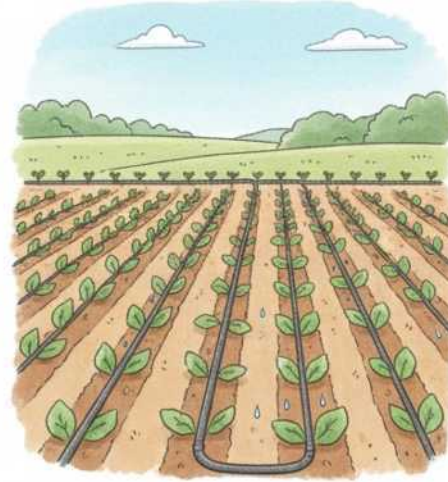
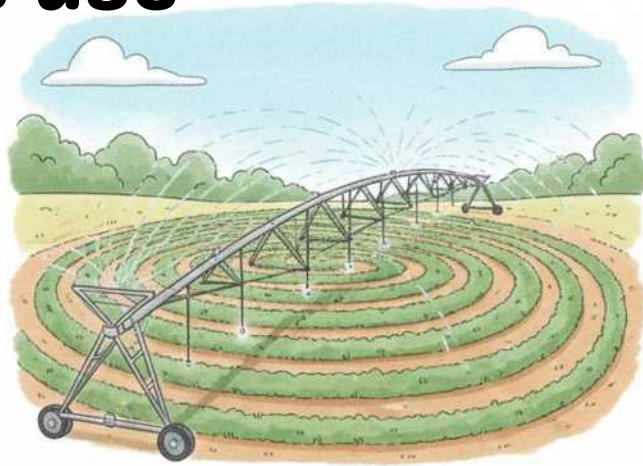


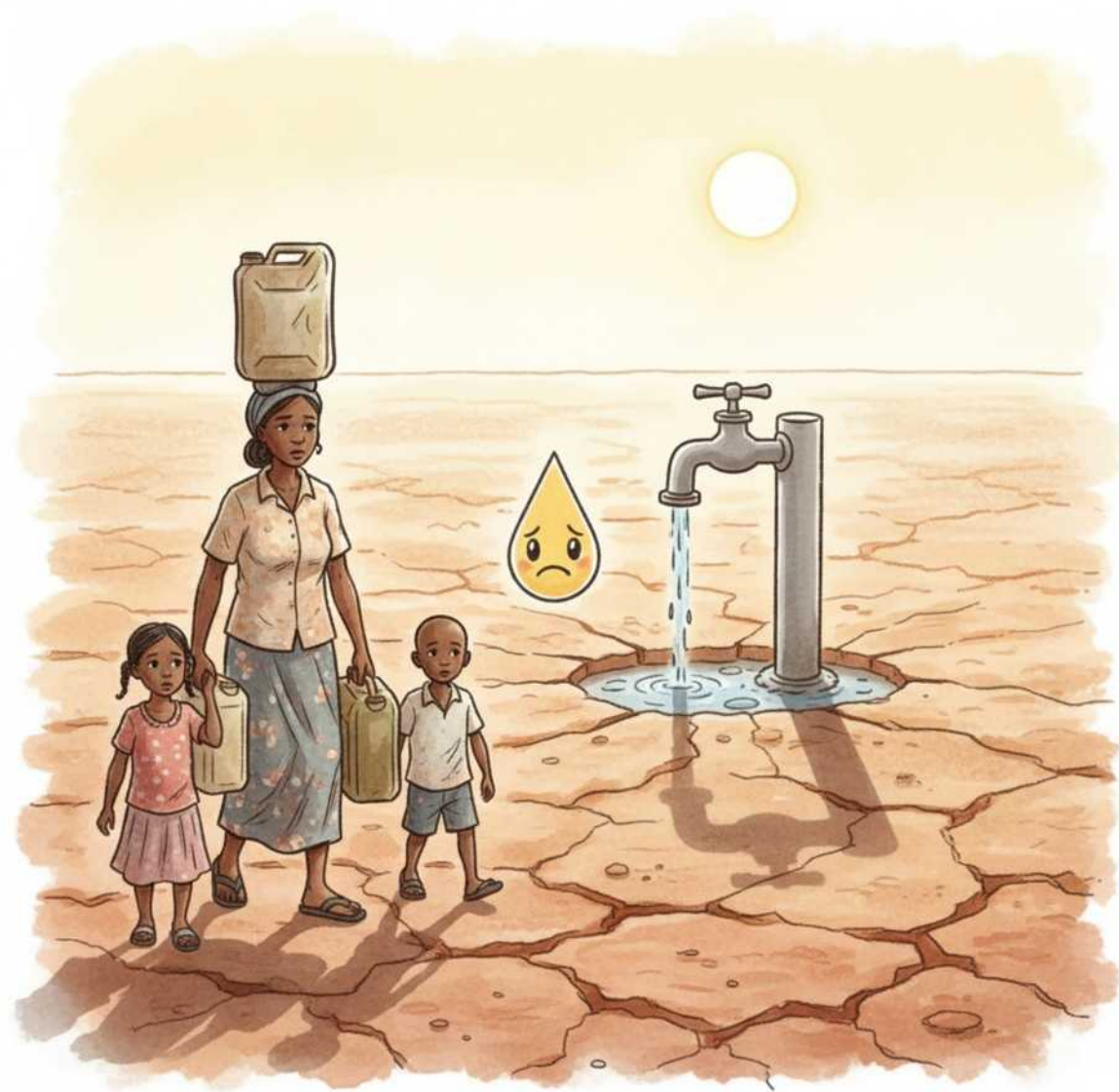
Domestic use



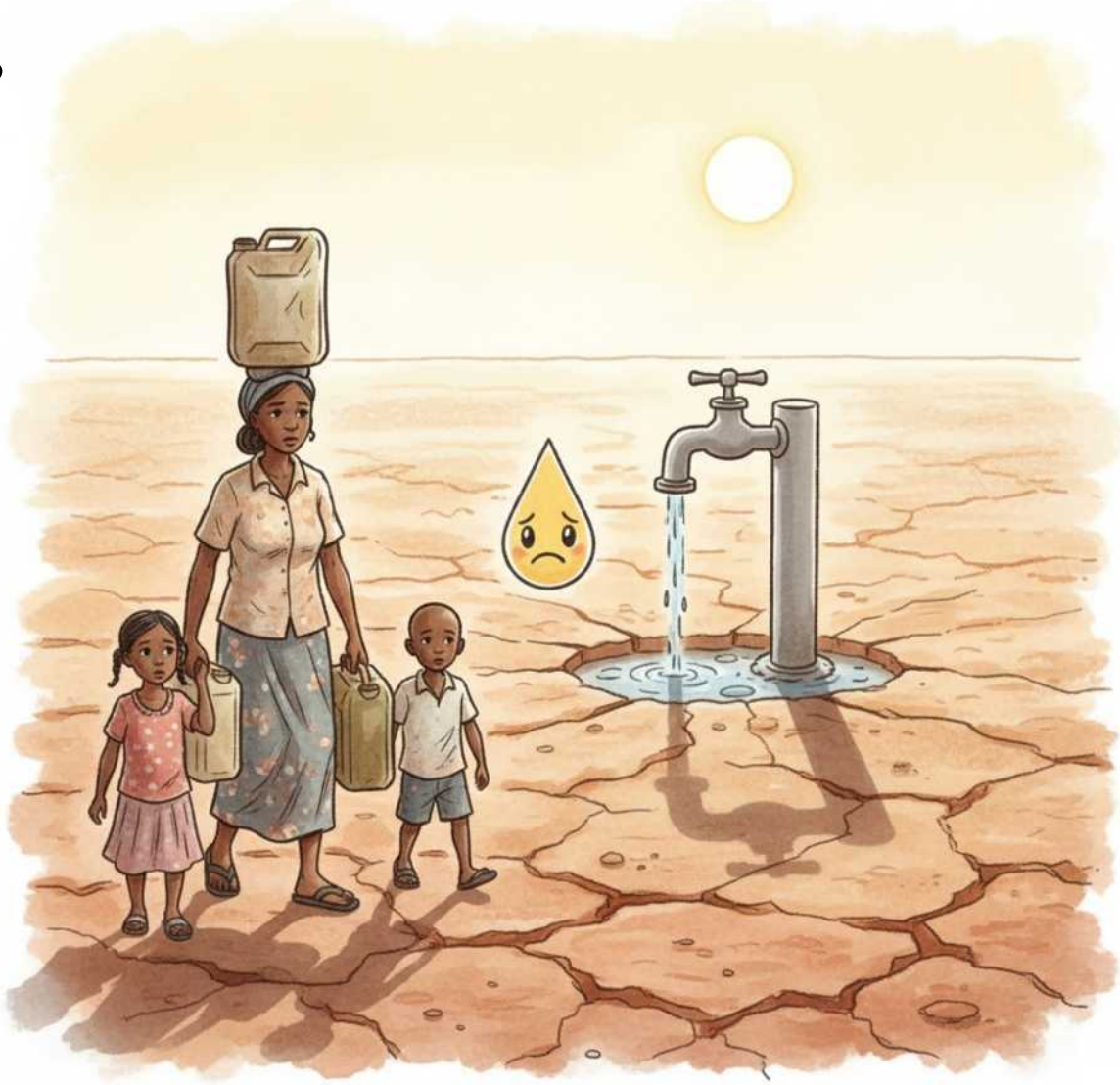


Agriculture use





Access to water



Floods

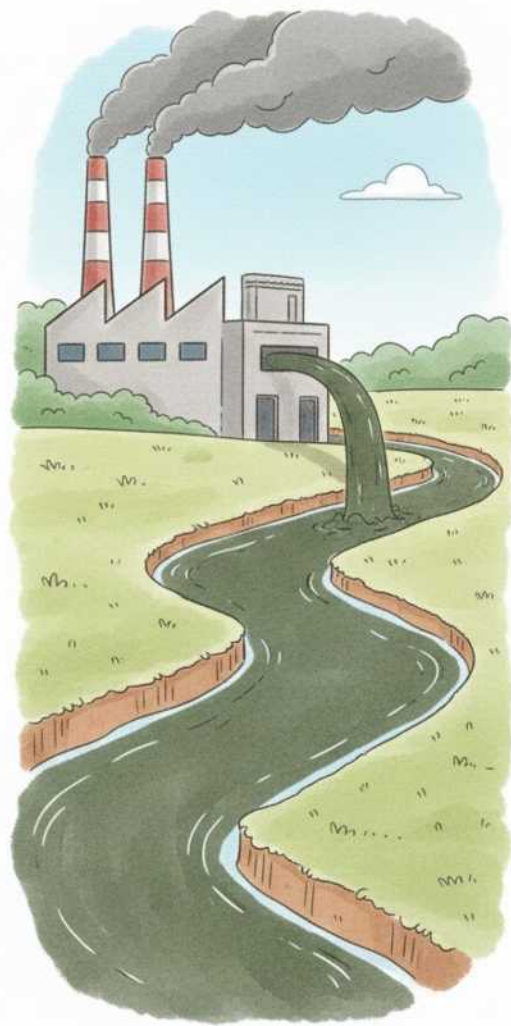
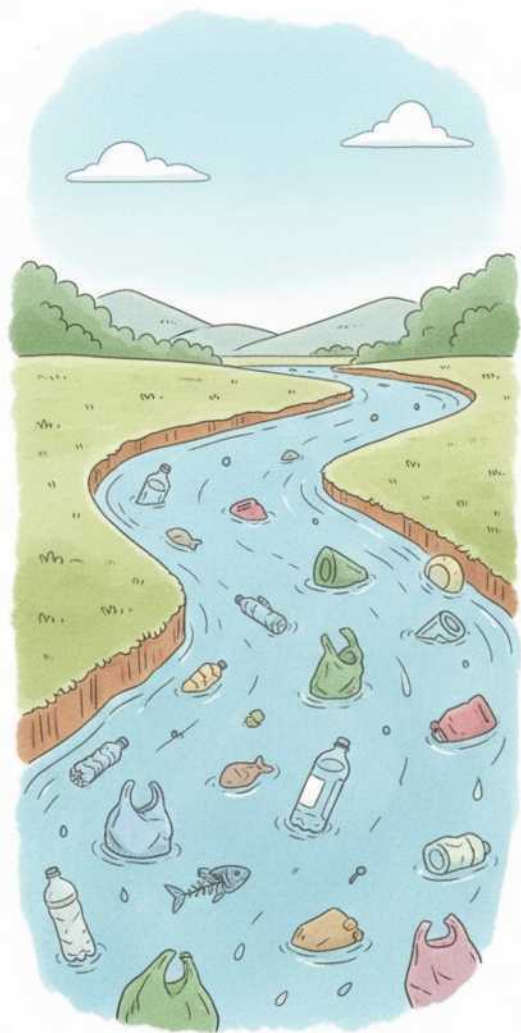


drought

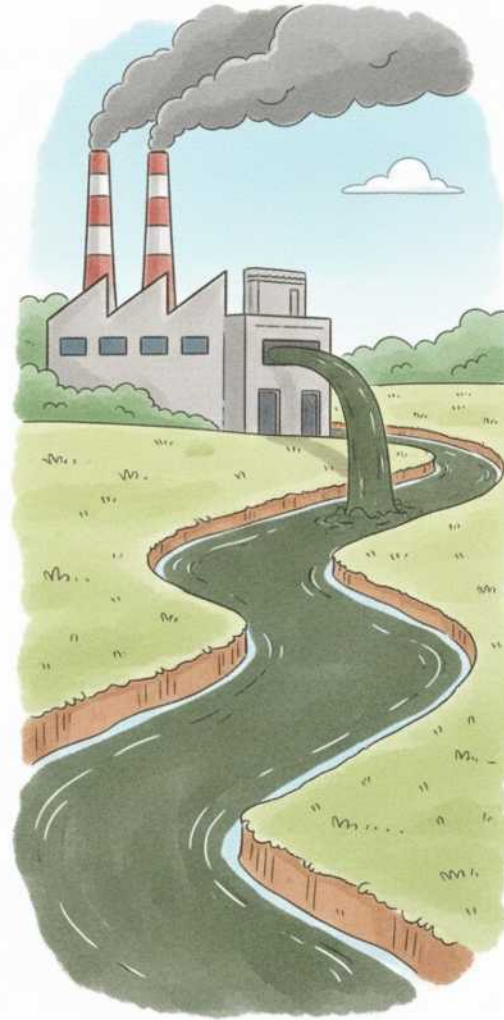
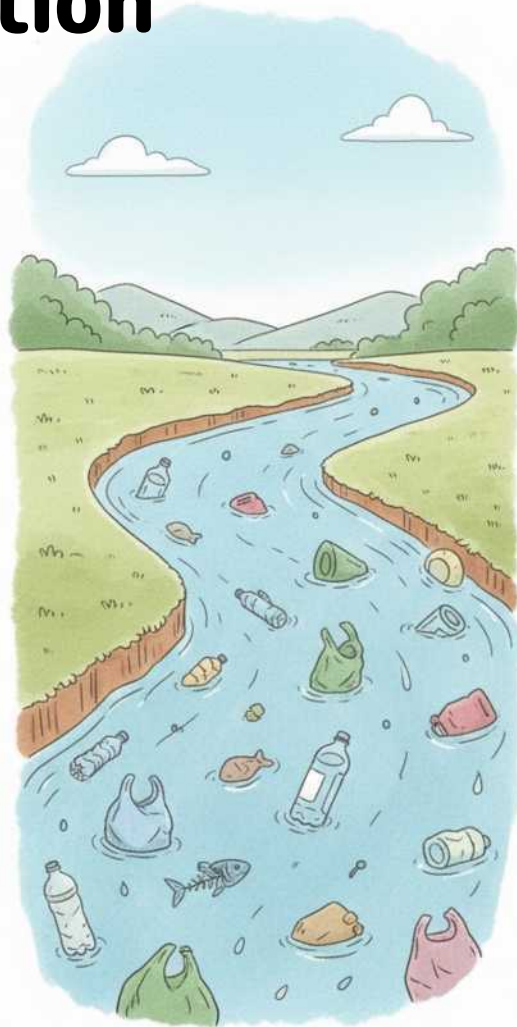


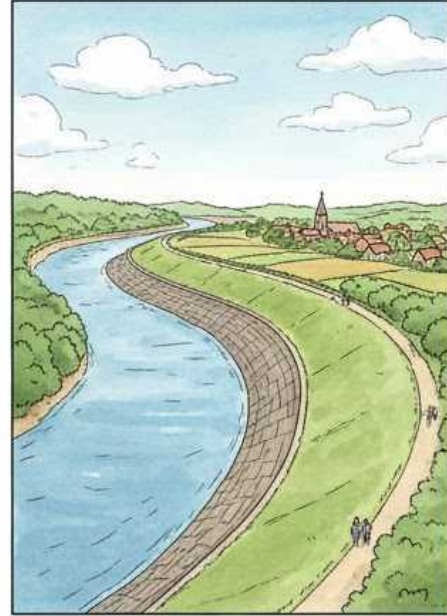
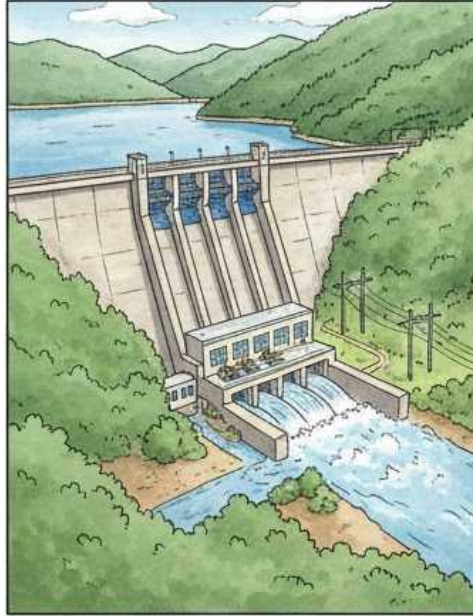
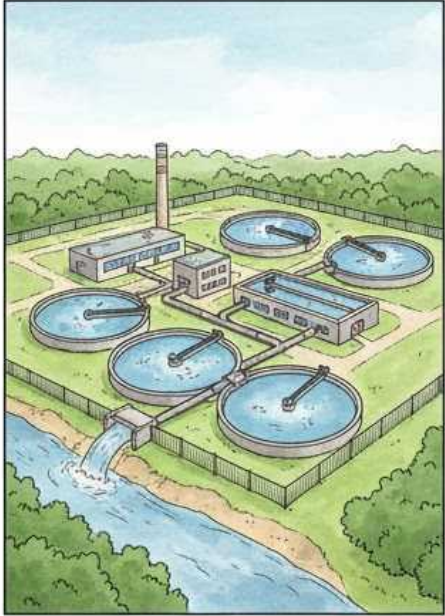
Extreme weather events



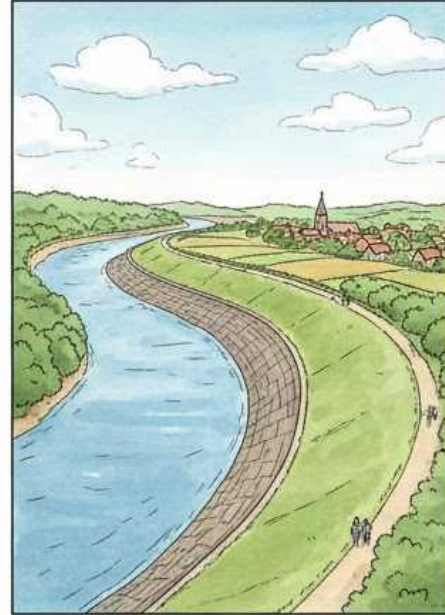
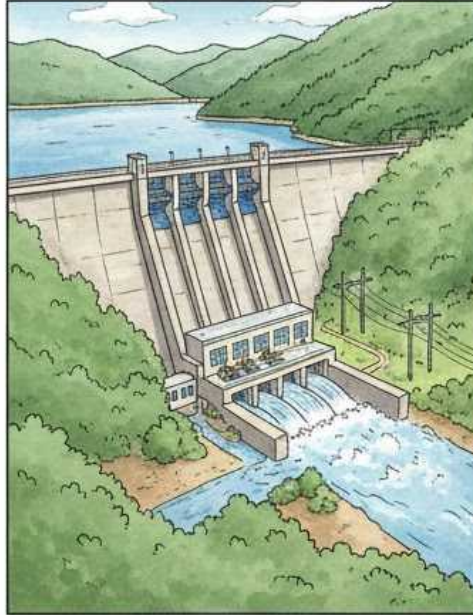
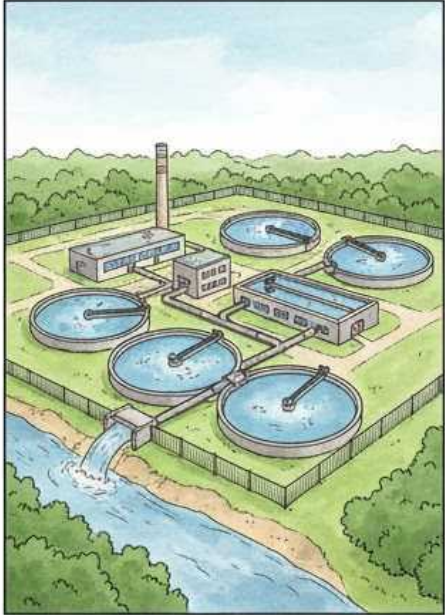


Water pollution






Industry & Energy



AGRICULTURE & FOOD

 irrigation (ramp, drip irrigation, canals, well, aquifer/groundwater, mega reservoirs)
Farming: crops, livestock



ACCESS TO WATER

- inequality / Fair access
- unfair access / Fair access
- easy access (e.g.: tap water at home)
- difficult access (long distance walk)
- rural areas vs cities (countryside)
- water conflicts



WATER challenges

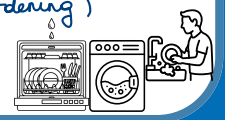
DOMESTIC USE



Thirst / To be thirsty → drinking water
↳ tap water / bottled water

Hygiene → to take a shower/a bath, to wash hands..., to use the toilets.

Household use → to wash the dishes (dishwasher), wash the floor, the laundry (washing machine), to cook, to water the plants (gardening)



POLLUTION & QUALITY

or contamination

- chemicals, pesticides, fertilizers, acid, fuel
- plastic waste, microplastics
- wastewater, sewage

Quality
water treatment plant / factory



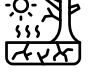
INDUSTRY & ENERGY

- Power plant + water cooling system
- hydroelectric dam

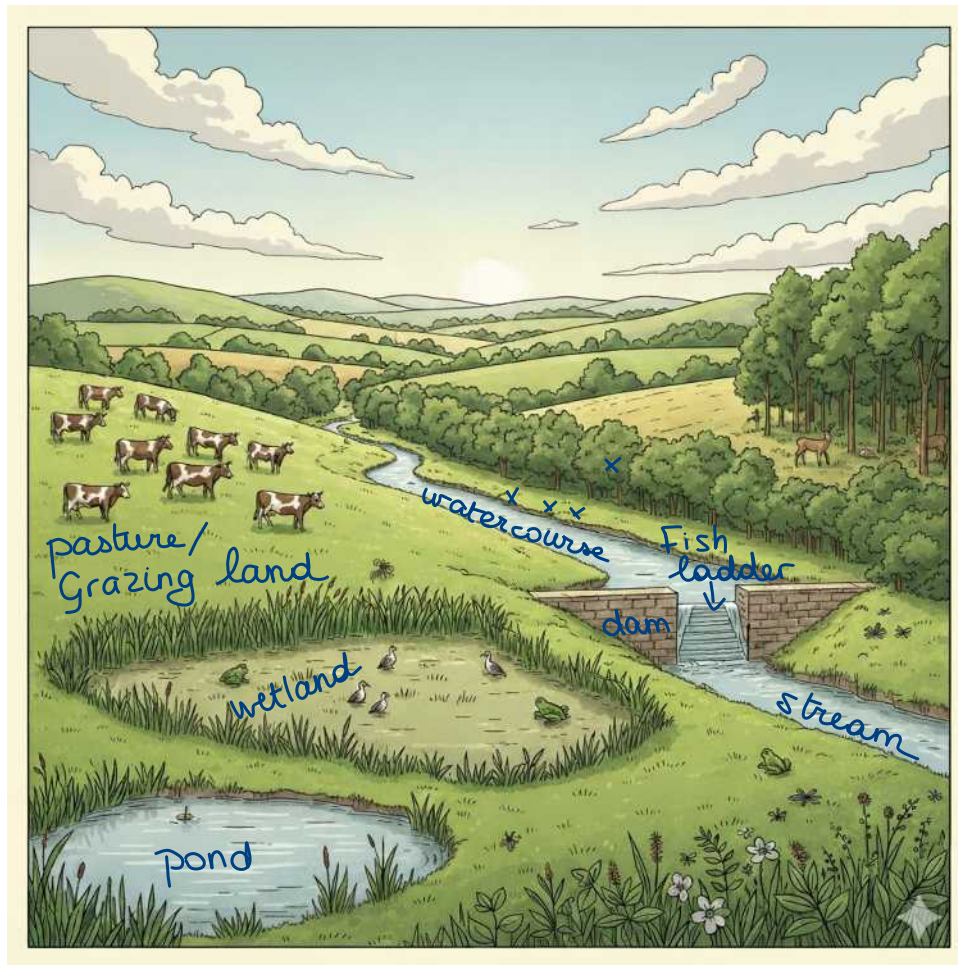


CLIMATE CHANGE



- droughts - heatwaves ⇒ water shortage wildfires 
- floods, heavy rainfall
- melting ice caps / glaciers
- sea level rise erosion





French	English	Définition
Biodiversité	Biodiversity	The variety of all living things (plants, insects, animals...).
Pâturage	Pasture / Grazing land	A field covered with grass where livestock (cows, sheep...) eat.
mare	Pond	A small area of still water, smaller than a lake.
Cours d'eau	Stream / Watercourse	Flowing water like a brook / a creek / or a small river. = stream
Passe à poisson	Fish ladder / Fishway	A structure to help fish swim over a dam or an obstacle.
Corridor Ecologique	Ecological corridor	A natural "bridge" or path for animals to move between habitats.
Zone humide	Wetland	Land that is soaked with water (marshes, swamps, peat bogs). tourbières marais