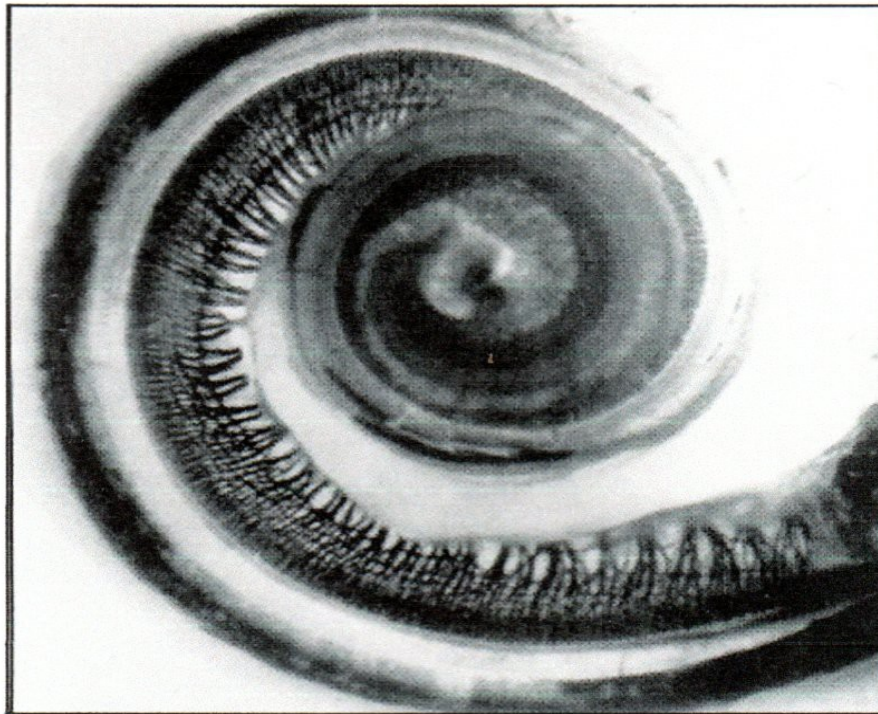
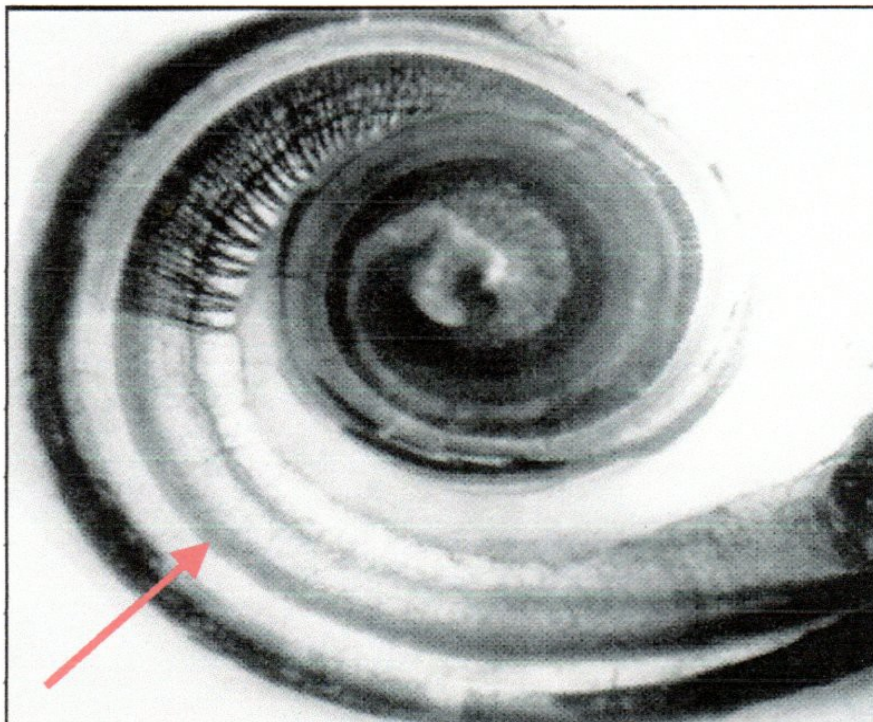


HEAR TODAY..... HEAR TOMORROW



Normal Inner Ear

The inner ear houses thousands of hair cells as shown in the picture above.



Noise-Induced Hearing Loss

Noise-Induced hearing loss will begin at the first bend of the cochlea (3000 Hz - 6000 Hz) and then spread to the surrounding hair cells