

What do I do if I live in a tsunami zone and feel an earthquake?

As soon as you feel the earth shake, you should "drop, cover and hold on" until the shaking stops, then immediately head to higher ground, inland or the upper storey of a stable building. **DO NOT wait for an official warning—the shaking IS your warning!** Visit www.ShakeOutBC.ca for more.

Household Preparedness

If you live in an area at-risk of tsunami, it's important to have grab-and-go bags in your home, office and vehicle. Don't forget to fill out an emergency plan so everyone in your household knows what to do when disaster strikes. Visit www.gov.bc.ca/PreparedBC to get started now.

What is a Tsunami?

A tsunami is a series of long, surge-like waves generated when a large volume of ocean water is rapidly displaced, typically by a major subduction zone earthquake. The first wave to arrive is often not the largest. Waves may continue for up to 12 hours, so stay away from the shore until local officials tell you it is safe to return.

Tsunami Alert Levels

There are five alert levels and each of which has a distinct meaning. The alert levels are:

ALERT LEVEL	THREAT	ACTION
WARNING	Flood wave possible	Full evacuation suggested
ADVISORY	Strong currents likely	Stay away from the shore
WATCH	Danger level not yet known	Stay alert for more information
INFORMATION STATEMENT	Minor waves at most	No action suggested
CANCELLATION	Tidal gauges show no wave activity	Confirm safety of local areas



Scenes from British Columbia's first-ever *High Ground Hike* held in Tofino in April 2016. Participants hiked from Tonquin Beach to a designated refuge centre, where they took part in a preparedness fair.

In Case of Tsunami



Notice any strange behavior in animals



Move quickly to higher ground or inland



Act fast when warning is issued



Grab a tree



Take first aid kits



Keep your mobile phone

EMERGENCY INFORMATION

Facebook Page: Village of Queen Charlotte
Emergency Network

Radio: CFNR 97.1 FM

Emergency Management BC:
www.embc.gov.bc.ca

Village of Queen Charlotte
www.queencharlotte.ca

HOW TO USE THE PLANNING MAP:

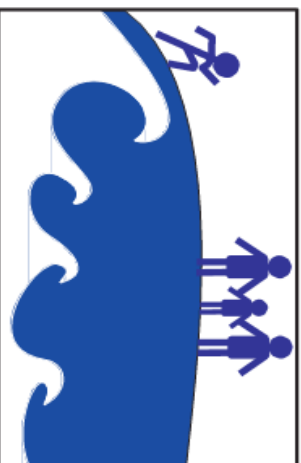
- 1 Use the map on the reverse side of this brochure to locate your home and determine if you are in the Tsunami Hazard Zone.
- 2 If your home is outside of the Tsunami Hazard Zone, be prepared to receive neighbours in need of shelter.
- 3 If your home is in the Tsunami Hazard Zone use the map to locate an Assembly Area or open area outside of the Tsunami Hazard Zone where you can gather with others to receive further information. The assembly areas do not provide any facilities but will be a location to obtain further information.
- 4 The Queen Charlotte Youth Centre will be opened as a Reception Centre, providing warm shelter, basic comforts and information.
- 5 Identify the route you would walk to reach safety from your home or workplace.
- 6 Discuss the Tsunami Hazard with your family and co-workers. Everyone should know what to do when a Tsunami follows a major earthquake.

TSUNAMI

TSUNAMI EVACUATION MAP:

EVACUATION MAP

QUEEN CHARLOTTE



IF YOU FEEL AN EARTHQUAKE:

1. PROTECT YOURSELF: DROP, COVER, HOLD—UNTIL THE EARTHQUAKE IS OVER
2. MOVE QUICKLY INLAND TO HIGH GROUND AND AWAY FROM LOW-LYING AREAS—GO ON FOOT IF AT ALL POSSIBLE
3. DO NOT WAIT FOR AN OFFICIAL WARNING
4. DO NOT PACK OR DELAY
5. DO NOT RETURN TO SHORE
6. WAIT FOR AN "ALL CLEAR" FROM LOCAL OFFICIALS BEFORE RETURNING TO LOW-LYING AREAS.

A TSUNAMI MAY BE COMING IN A FEW MINUTES, MORE WAVES MAY ARRIVE SEVERAL HOURS AFTER THE FIRST WAVE!

Revised June 2015

WHAT TO KNOW AND WHAT TO DO ABOUT TSUNAMIS

A Tsunami is a series of sea waves usually caused by a displacement of the ocean floor by an undersea earthquake.

We distinguish between a Tsunami caused by an undersea earthquake near the coast (**LOCAL TSUNAMI**) and an undersea earthquake far away from the coast (**DISTANT TSUNAMI**).

A **LOCAL TSUNAMI** could come onshore within minutes after the earthquake. There may not be an official warning. **Ground shaking could be the only warning you have. Evacuate quickly!**

A **DISTANT TSUNAMI** may take hours to come ashore and will generate a **TSUNAMI WATCH**, **TSUNAMI ADVISORY** and/or a **TSUNAMI WARNING**.

- **TSUNAMI WATCH:** Prepare to evacuate to the Tsunami Safe Zone.

- **TSUNAMI ADVISORY:** The potential to generate strong currents or waves dangerous to those near the water is imminent, expected, or occurring. The threat may continue for several hours after initial arrival, but significant inundation is not expected for areas under an advisory. Appropriate actions to be taken by local officials may include closing beaches and evacuating harbours and marinas.

- **TSUNAMI WARNING:** Evacuate immediately to the Tsunami Safe Zone as shown on the back of this brochure. People located within the Tsunami Hazard Zone will be notified by sirens, emergency vehicles and door to door notifications if possible.

FOR BOTH DISTANT AND LOCAL TSUNAMIS:

- 1 Evacuate on foot if possible because of potential traffic jams.
- 2 Stay away from potentially hazardous areas until you receive an **ALL CLEAR** from officials. Officials must inspect all flooded or earthquake-damaged structures before anyone can go back into them.
- 3 In the event of a local earthquake and tsunami, it is unlikely that anyone will be available to help you, so **MAKE A PLAN AND BE PREPARED!**



IF YOU OBSERVE THE SEA LEVEL BEGINNING TO RISE STEADILY, OR DROP SO MUCH THAT THE SEA FLOOR IS EXPOSED, A TSUNAMI IS COMING VERY SOON. WARN OTHERS AROUND YOU AND SEEK HIGH GROUND IMMEDIATELY!

TSUNAMI

WHAT IS A TSUNAMI?



A series of ocean waves caused by an earthquake, landslide or volcanic eruption. Waves can be 10 metres or higher.

WHEN DOES IT OCCUR?



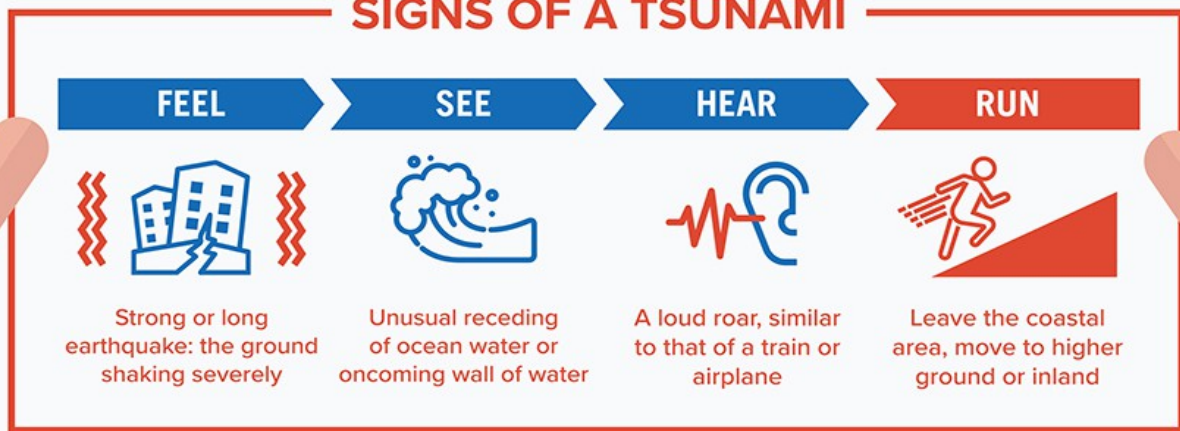
Anytime and anywhere, and if local, can attack in minutes. You cannot outrun a tsunami.

WHAT IS ITS IMPACT?

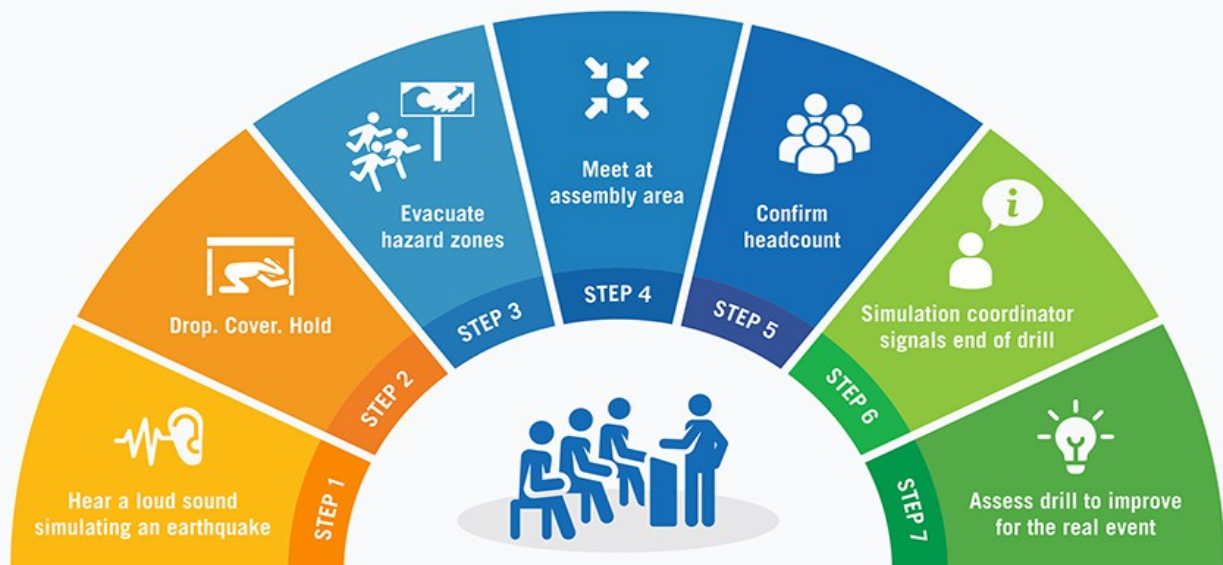


Floods coastal areas devastating homes, contaminating soil, killing coral, and flattening landscapes.

SIGNS OF A TSUNAMI



TSUNAMI EVACUATION DRILL



Source: COPECO HONDURAS, IOTIC, ITIC, LIPI



WHAT YOU SHOULD KNOW ABOUT TSUNAMIS IN BC

QUICK FACTS

TSUNAMI WAVES can CONTINUE for up to

12 HOURS

EACH WAVE can be SEPARATED by an

HOUR
OR MORE

and can TRAVEL at SPEEDS of up to

800 KPH

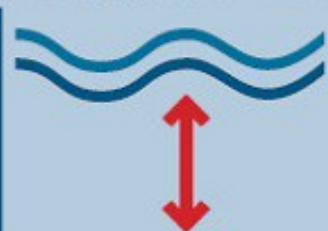
BC TSUNAMIS



TSUNAMI WARNING SIGNS



STRONG GROUND SHAKING



UNUSUAL SEA LEVEL CHANGES



ABNORMALLY HUGE WAVE



LOUD OCEAN ROAR

4 STEPS TO TSUNAMI SURVIVAL

1 GET TO **HIGH GROUND**



2 FOLLOW **OFFICIAL INSTRUCTIONS**



3 STAY AWAY **FROM THE BEACH**



4 PROTECT **YOURSELF, YOUR FAMILY & YOUR PROPERTY**



MAKE A PLAN • GET A KIT • STAY INFORMED



St. John Ambulance
SAVING LIVES
at work, home and play

@SJA_BCYT

SJABCYT

SJABCYT

WWW.SJA.CA

