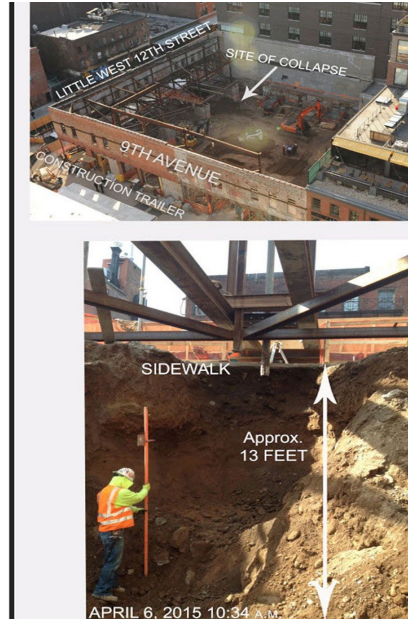


Man Buried in 'Completely Avoidable' Fatal Accident

Carlos Moncayo was the 18th construction worker to die on the job this year in New York City.
Ginger Christ OCT 09, 2015



A 22-year-old man was killed when the 14-foot-deep trench in which he was working collapsed and buried him beneath tons of soil and debris.

Carlos Moncayo of Queens was working on the construction of a Restoration Hardware store in Manhattan on April 6, 2015, when he was killed on the job.

In an investigation, OSHA¹ found that the project's general contractor, Harco Construction LLC of New York City, and Moncayo's employer, subcontractor Sky Materials Corp. of Maspeth and Calverton, did not provide cave-in protection for the trench or support or brace a section of undermined and unsupported sidewalk to prevent it from collapsing into the trench.

"Carlos Moncayo was a person, not a statistic. His death was completely avoidable. Had the trench been guarded properly against collapse, he would not have died in the cave-in," said Kay Gee, OSHA's area director in Manhattan.

"Managers from Harco and Sky Materials were aware of these deadly hazards and did not remove employees from the trench, even after warnings from project safety officials. This unconscionable behavior needlessly and shamefully cost a man his life."

OSHA issued each employer two citations for willful violations of workplace safety standards and assessed fines of \$140,000 – the maximum fines permitted – for each company.

In addition to the OSHA citations, officials from both companies were indicted for manslaughter, among other charges on Aug. 5 in New York State Supreme Court.

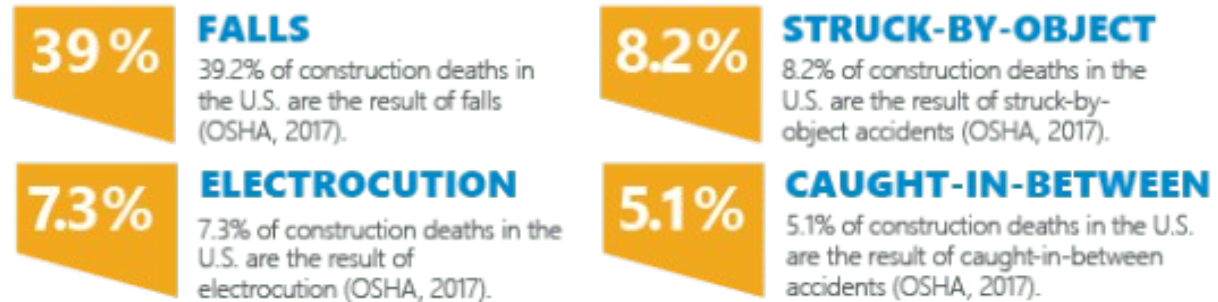
"Eighteen New York City construction workers have died on the job this year. That is an unacceptable toll," said Robert Kulick, OSHA's regional administrator in New York.

"Construction work hazards are well-known, and so are safeguards to prevent deaths and injuries. Employers must provide a workplace that allows employees to return home safely at the end of each workday."

¹OSHA : Occupational Safety & Health Administration

THE FATAL FOUR

Leading Causes of Construction Fatalities



WHAT IS OSHA?


Occupational Safety and Health Administration (OSHA) is established to ensure safe and healthful working conditions for working men and women by setting and enforcing standards and by providing training, outreach, education and assistance.

OSHA10

The OSHA10 and OSHA30 courses are designed to educate and train workers.

Many states now require OSHA training for all construction workers. These initiatives are built to prevent the fatal 4 on job sites.

OSHA30



20.7% of private industry fatalities are represented by the construction industry.



myComply is designed to allow the construction industry to track training, certifications & compliance documents for free.

Visit <https://mycomply.net> today.

