

The background is a dark blue field filled with various colorful, rounded geometric shapes like rectangles, circles, and ovals in shades of teal, olive green, brown, and red. Some shapes are oriented diagonally, creating a dynamic, layered effect. In the top-left corner, there is a light blue curved shape. In the bottom-right corner, there is a light cyan curved shape with several small orange dots and triangles scattered near its edge.

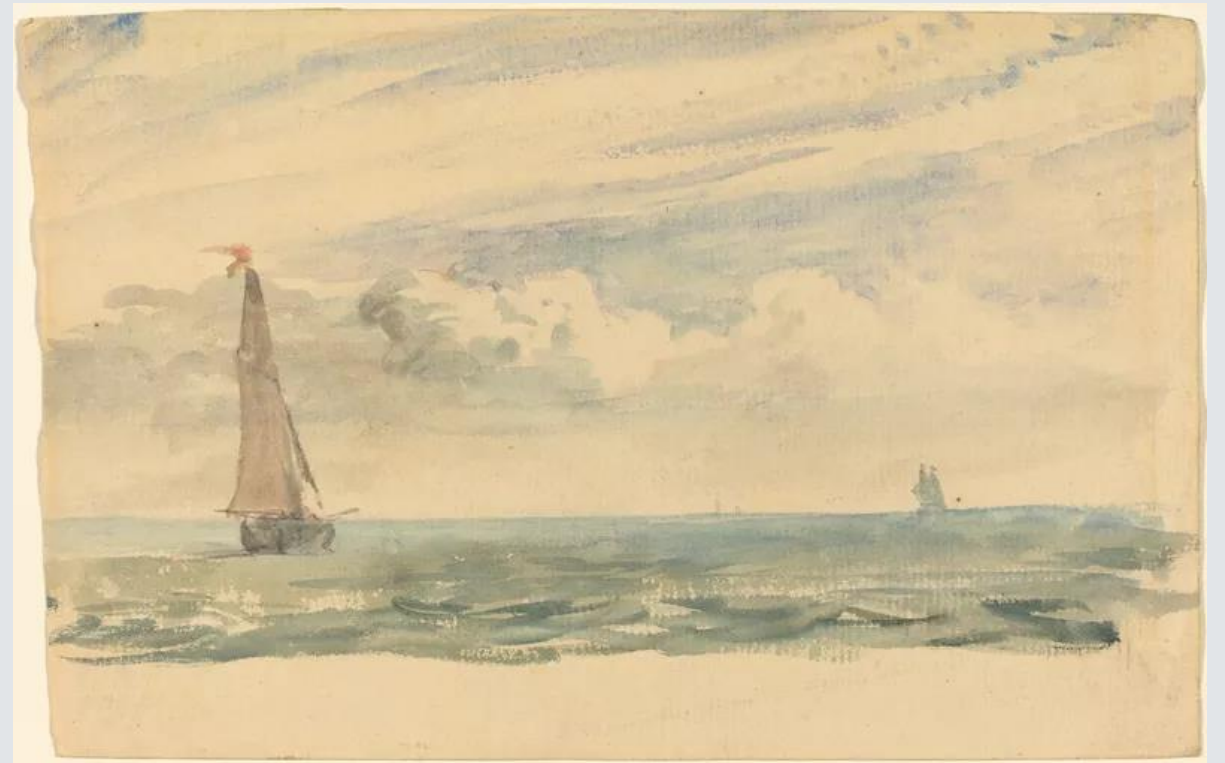
Inspiration artistes

GATTO Anna 2nd1

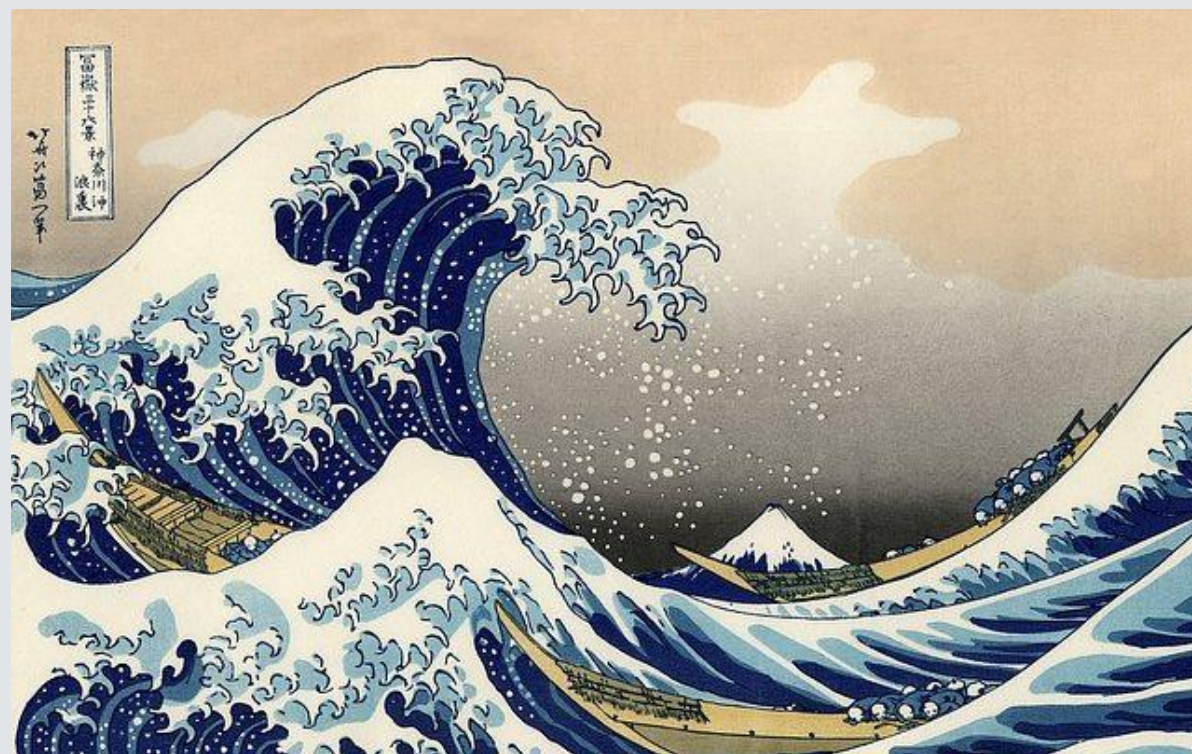
Mer Calme
Simon DE VLIEGER
(1600-1653)



Deux voiliers
John CONSTABLE
(1776-1837)



La grande vague
Katsushika HOKUSAI
(1760-1849)



*La mer vue des
hauteurs de Dieppe*
Eugène DELACROIX
(1798-1863)





Solitude en mer
Anton MELBYE
(1818-1875)



*Impression, soleil
levant Claude
MONET
(1840-1926)*



Marine avec voilier
Eugène BOUDIN
(1824-1898)



Nocturne James
McNEILL WHISTLER
(1834-1903)



*Concarneau. Calme
du soir, Opus 220
Paul SIGNAC (1863-
1935)*

