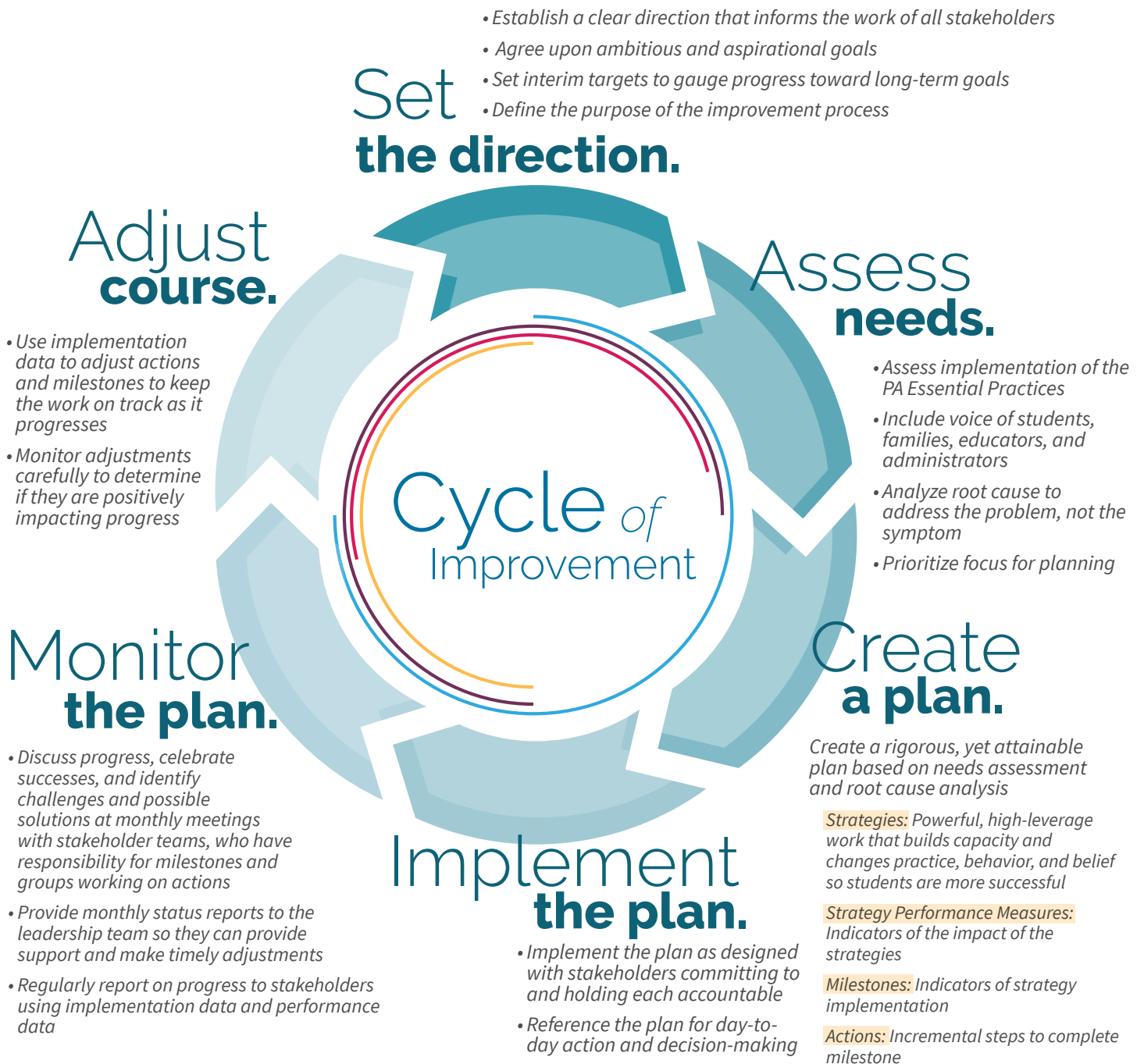


The Pennsylvania Department of Education, LEAs, schools, and school communities are embarking on a path of continuous school improvement. Local needs will set the direction for improvement efforts, while resources and teams from the Pennsylvania Department of Education will support each phase of planning and implementation. PA's cycle of improvement is grounded in evidence-based approaches that can both improve student outcomes and increase return on investment, as resources are spent on programs and practices likely to have a positive impact. Opportunities to create, assess, and adjust throughout the cycle will empower schools and engage all stakeholders in pursuit of a shared vision: students that are **college-, career-, and community-ready**.



"ESSA provides state education agencies with new flexibility in determining how and when to deliver school improvement strategies."

Pennsylvania ESSA Consolidated State Plan
January 12, 2018, page 59



Last revised 12/2018.