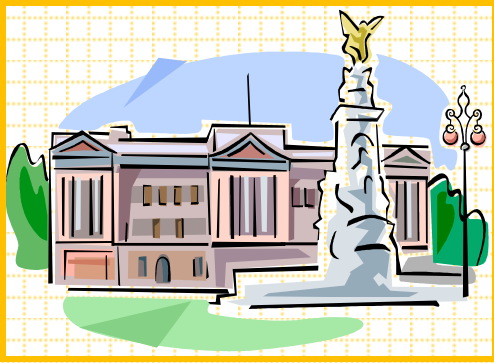


7 A : BUCKINGHAM



7 PALACES

- A: Buckingham Palace
- B: Kensington Palace
- C: Hampton Court
- D: Windsor Castle

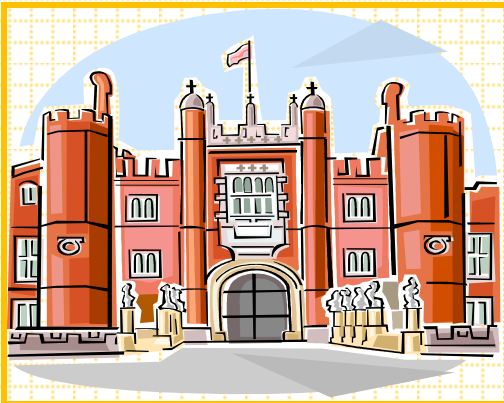
7 B : KENSINGTON



7 PALACES

- A: Buckingham Palace
- B: Kensington Palace
- C: Hampton Court
- D: Windsor Castle

7 C : HAMPTON COURT



7 PALACES

- A: Buckingham Palace
- B: Kensington Palace
- C: Hampton Court
- D: Windsor Castle

7 D : WINDSOR CASTLE



7 PALACES

- A: Buckingham Palace
- B: Kensington Palace
- C: Hampton Court
- D: Windsor Castle

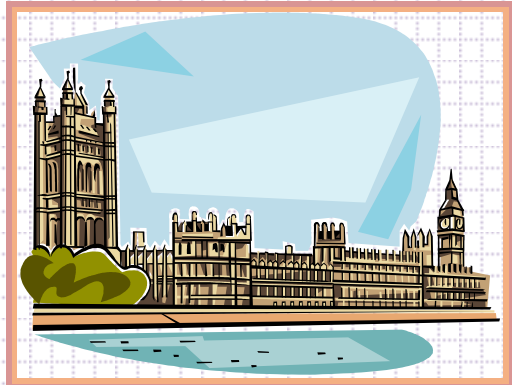
8 A: TOWER OF LONDON



8 LONDON

- A: Tower of London
- B: Houses of Parliament
- C: Big Ben
- D: Tower Bridge

8 B: HOUSES OF PARLIAMENT



8 LONDON

- A: Tower of London
- B: Houses of Parliament
- C: Big Ben
- D: Tower Bridge

8 C: BIG BEN



8 LONDON

- A: Tower of London
- B: Houses of Parliament
- C: Big Ben
- D: Tower Bridge

8 D: TOWER BRIDGE



8 LONDON

- A: Tower of London
- B: Houses of Parliament
- C: Big Ben
- D: Tower Bridge

1 A : TUBE



1 TRANSPORT

- A: tube
- B: black taxi
- C: plane
- D: double-decker bus

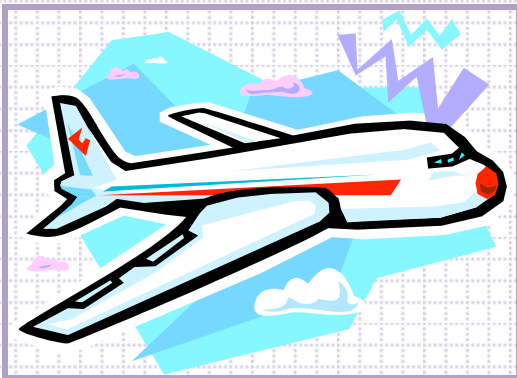
1 B : BLACK TAXI



1 TRANSPORT

- A: tube
- B: black taxi
- C: plane
- D: double-decker bus

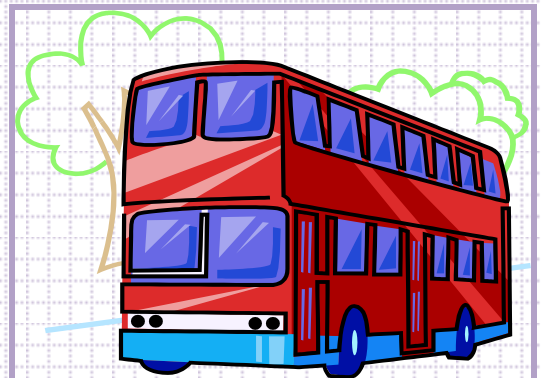
1 C : PLANE



1 TRANSPORT

- A: tube
- B: black taxi
- C: plane
- D: double-decker bus

1 D : DOUBLE-DECKER



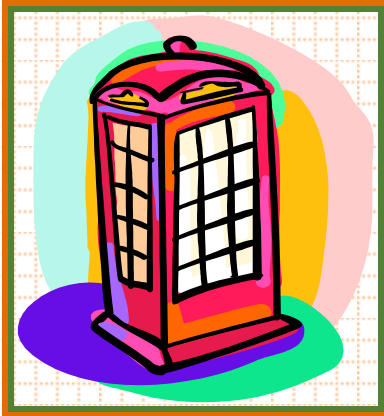
1 TRANSPORT

- A: tube
- B: black taxi
- C: plane
- D: double-decker bus

Go fish card game :

- It is a game for more than three players
- The aim of the game is collect the whole set of cards, it means: 1A, 1B, 1C, 1D.....
- On your turn, ask a player for a specific card rank. For example: "Jane, please give me your 1D." You must already hold at least one card of the requested rank.
- Rules for playing Go fish card game are available here:
http://boardgames.about.com/od/cardgames/a/go_fish.htm

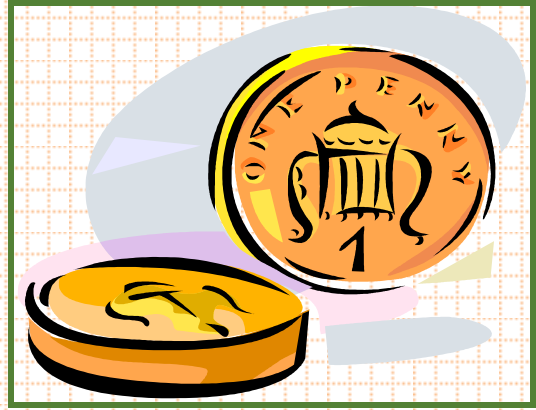
2 A : TELEPHONE BOX



2 SYMBOLS

- A: telephone box
- B: pound
- C: pillar box
- D: bowler hat

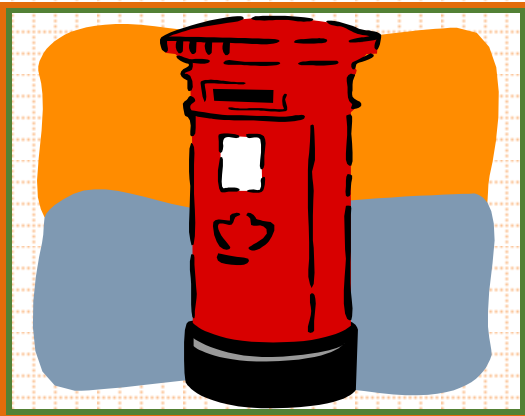
2 B : POUND



2 SYMBOLS

- A: telephone box
- B: pound
- C: pillar box
- D: bowler hat

2 C : PILLAR BOX



2 SYMBOLS

- A: telephone box
- B: pound
- C: pillar box
- D: bowler hat

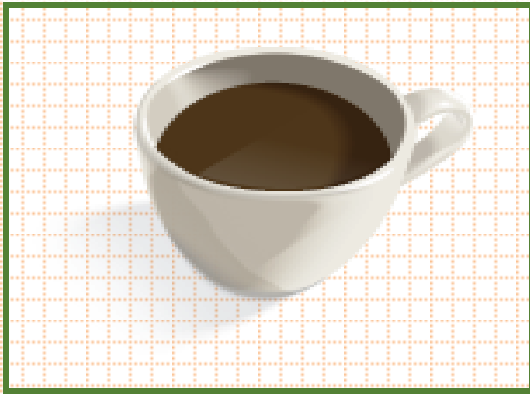
2 D : BOWLER HAT



2 SYMBOLS

- A: telephone box
- B: pound
- C: pillar box
- D: bowler hat

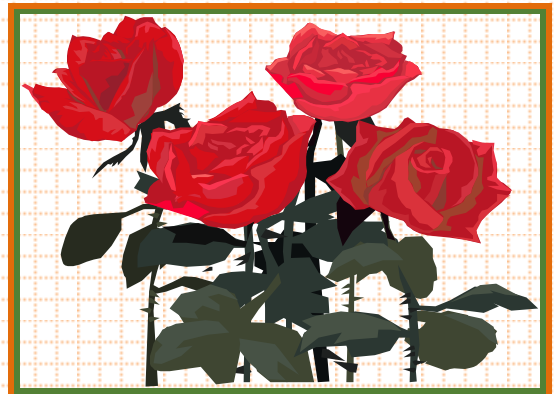
③ A : CUP OF TEA



③ SYMBOLS II

- A: cup of tea
- B: rose
- C: Union Jack
- D: Crown Jewels

③ B : ROSE



③ SYMBOLS II

- A: cup of tea
- B: rose
- C: Union Jack
- D: Crown Jewels

③ C : UNION JACK



③ SYMBOLS II

- A: cup of tea
- B: rose
- C: Union Jack
- D: Crown Jewels

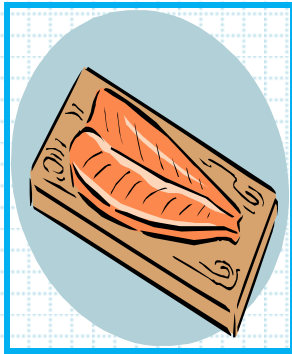
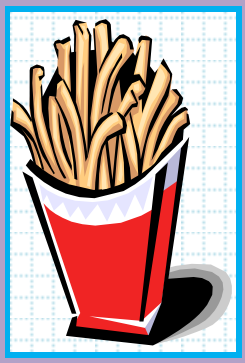
③ D : CROWN JEWELS



③ SYMBOLS II

- A: cup of tea
- B: rose
- C: Union Jack
- D: Crown Jewels

5 A : FISH AND CHIPS



5 FOOD

- A: fish and chips
- B: Christmas pudding
- C: traditional breakfast
- D: turkey

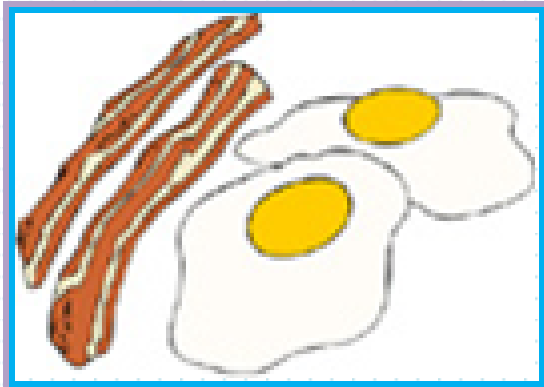
5 B : CHRISTMAS PUDDING



5 FOOD

- A: fish and chips
- B: Christmas pudding
- C: traditional breakfast
- D: turkey

5 C : TRAD. BREAKFAST



5 FOOD

- A: fish and chips
- B: Christmas pudding
- C: traditional breakfast
- D: turkey

5 D : TURKEY



5 FOOD

- A: fish and chips
- B: Christmas pudding
- C: traditional breakfast
- D: turkey

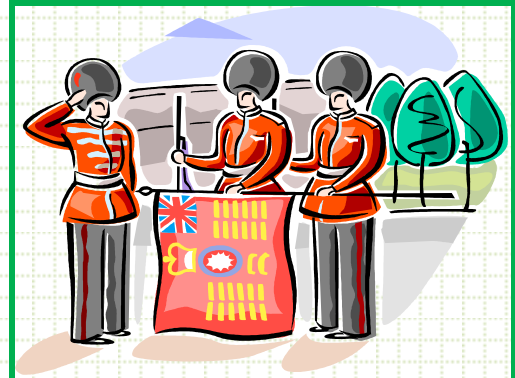
4 A : BEEFEATER



4 PEOPLE

- A: Beefeater
- B: guard
- C: policeman
- D: lolly-pop lady

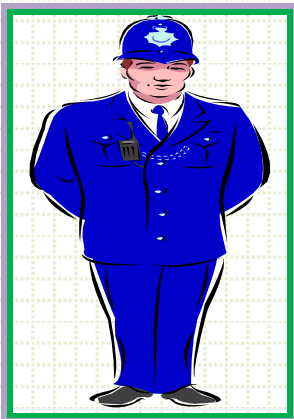
4 B : GUARD



4 PEOPLE

- A: Beefeater
- B: guard
- C: policeman
- D: lolly-pop lady

4 C : POLICEMAN



4 PEOPLE

- A: Beefeater
- B: guard
- C: policeman
- D: lolly-pop lady

4 D : LOLLY-POP LADY



4 PEOPLE

- A: Beefeater
- B: guard
- C: policeman
- D: lolly-pop lady

6 A : Henry VIII



6 KINGS, QUEENS

- A: Henry VIII
- B: Elizabeth II
- C: Elizabeth I
- D: Edward I

6 B : ELIZABETH II



6 KINGS, QUEENS

- A: Henry VIII
- B: Elizabeth II
- C: Elizabeth I
- D: Edward I

6 C : ELIZABETH I



6 KINGS, QUEENS

- A: Henry VIII
- B: Elizabeth II
- C: Elizabeth I
- D: Edward I

6 D : EDWARD I



6 KINGS, QUEENS

- A: Henry VIII
- B: Elizabeth II
- C: Elizabeth I
- D: Edward I