
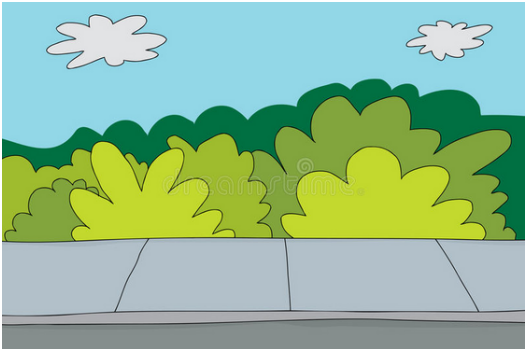


Be safe on the road

Don't  next to  .

Don't  on the  .

 on the  .

Don't  next to  .

Be safe on the road

You can't



or



and

they can't



you!

Be safe on the road

D _ _ ' _



n _ _ _ t _



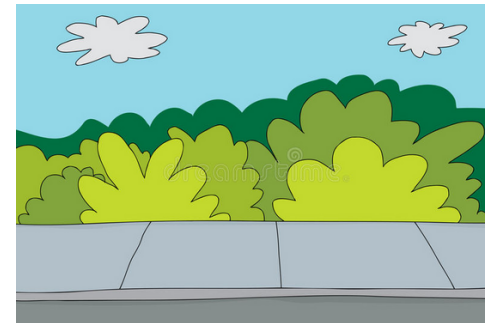
D _ _ ' _



o _ t _ _



o _ t _ _



D _ _ ' _



n _ _ _ t _



Be safe on the road

Y _ _ C _ _ ' _



O _



a _ _

t _ _ _ C _ _ ' _

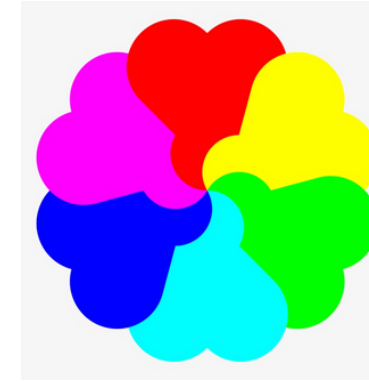


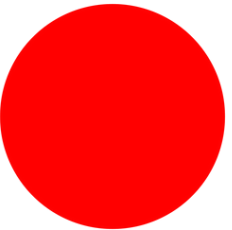
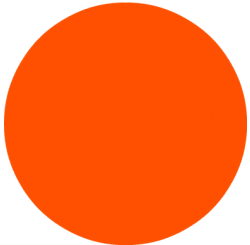
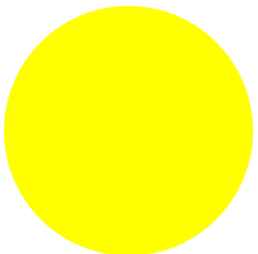

y _ _ !

Be safe on your bike

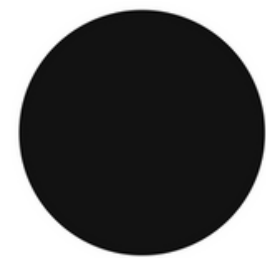


clothes in bright

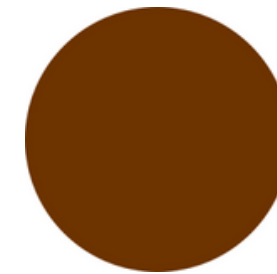


( ,  ,  , ).

Don't



or



.



,



and



can't



you.



_____ a _____.

Don't



on busy



.

Look



and



for



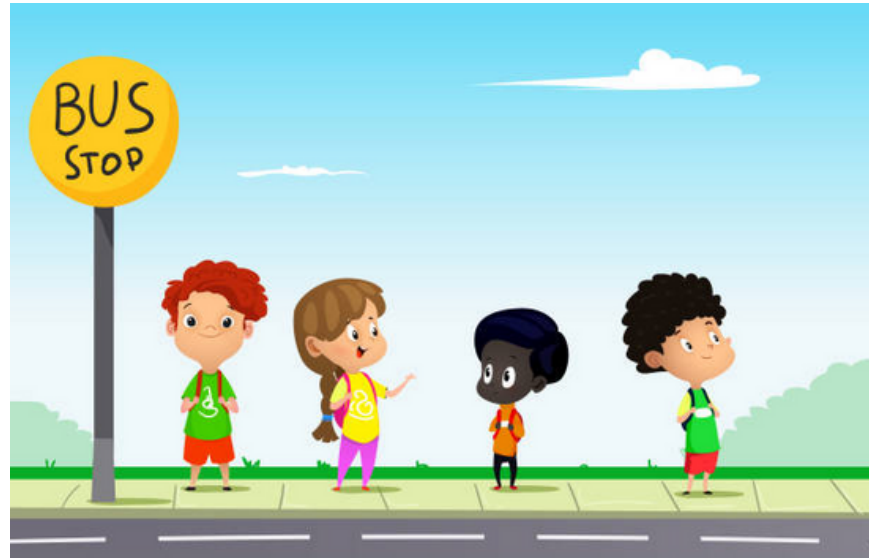
.

Don't



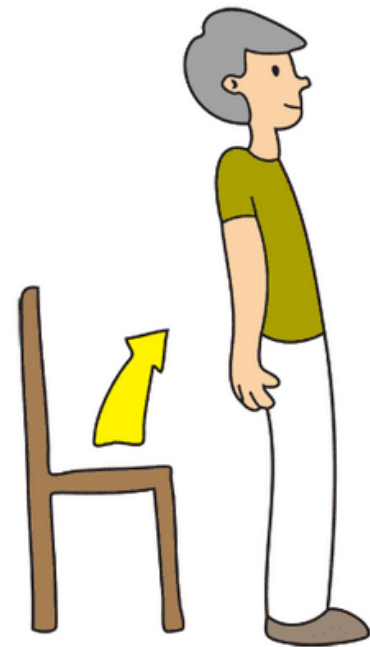
!

Be safe on the bus

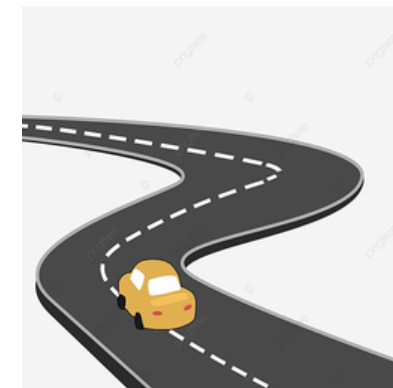


Wait in a s _ _ _ place.

Don't

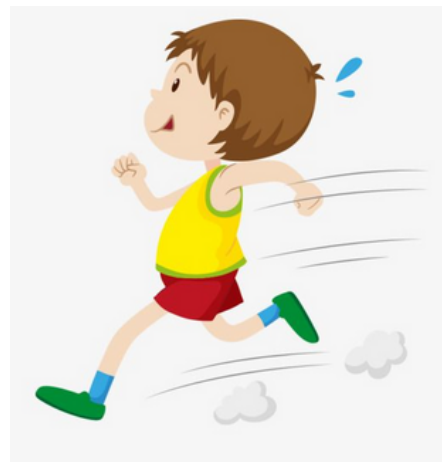


near the



.

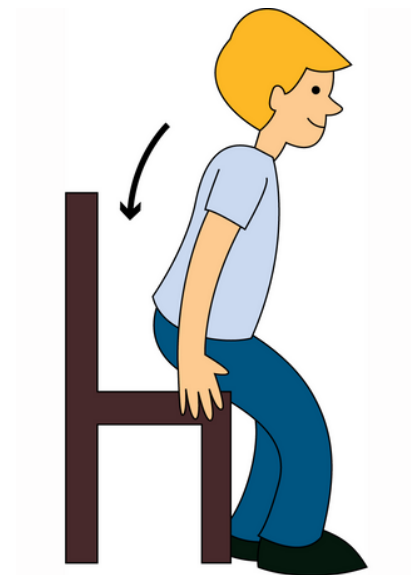
Don't



on the



.



.

Don't



. Be polite to the



and to other



.

Don't



to the



when

he or she is driving.

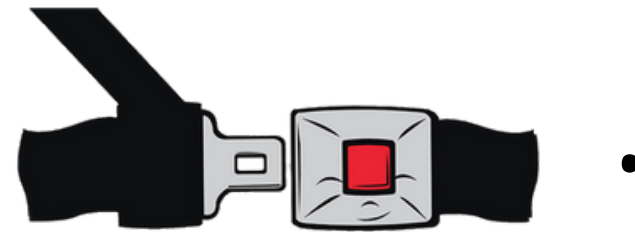
Be safe in the car



in the back seat.



your



.

Don't



in the



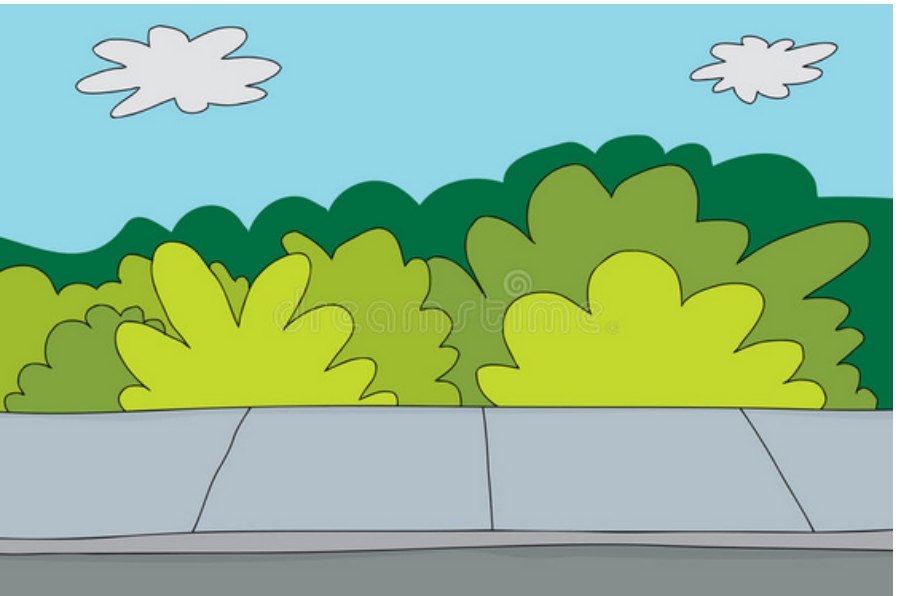
.

Be safe in the car

Use the

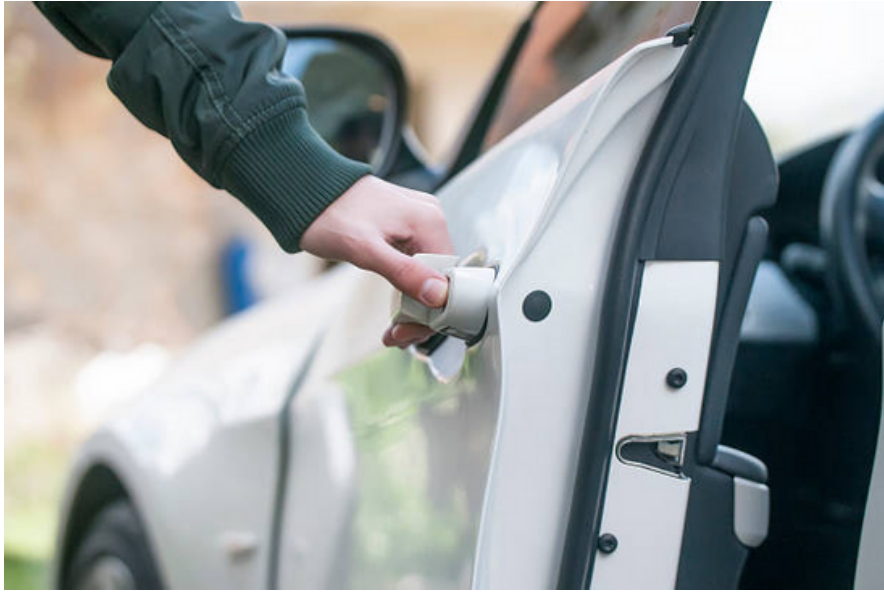


next to the



.

Don't



next to



.