

WATER CHALLENGES IN NORMANDIE





MIGRATORY

FISH IN

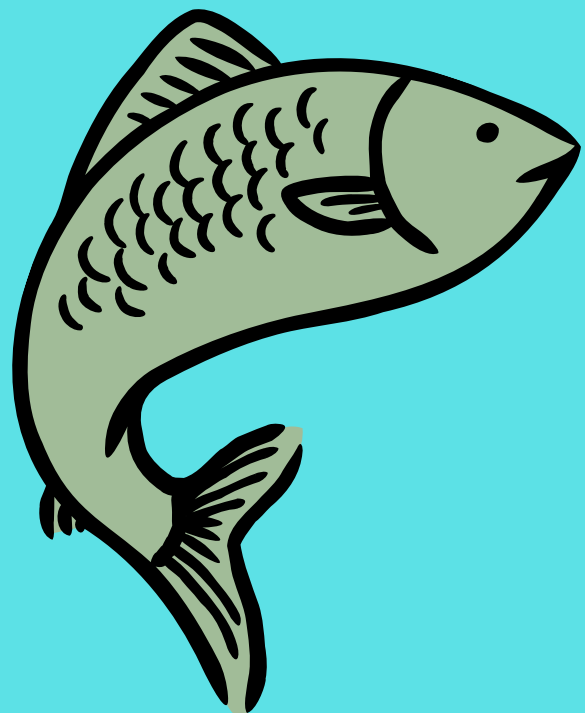
NORMANDY



Migratory fish in Normandy move between the sea and rivers to reproduce. Species include the Atlantic salmon, sea trout, European eel, lamprey, and shad.

They live in rivers such as the Seine, Orne, Vire, and Sélune, and are essential to ecosystem balance.

Today, they are threatened by dams, pollution, and overfishing, but river restoration actions are being carried out to protect them.



Saumon Athlétique

Migratory fish (river → sea → river)
An emblematic and threatened species

Diet

In rivers: insects, larvae, small crustaceans
In the sea: fish, crustaceans

Status

Very low populations
Dams

Pollution

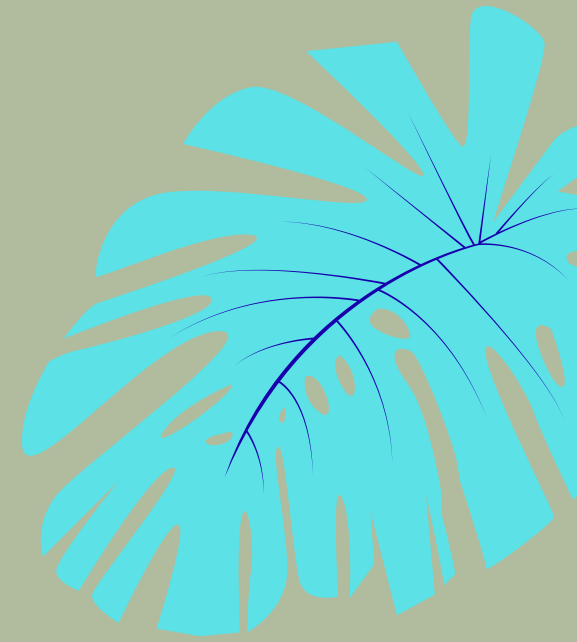
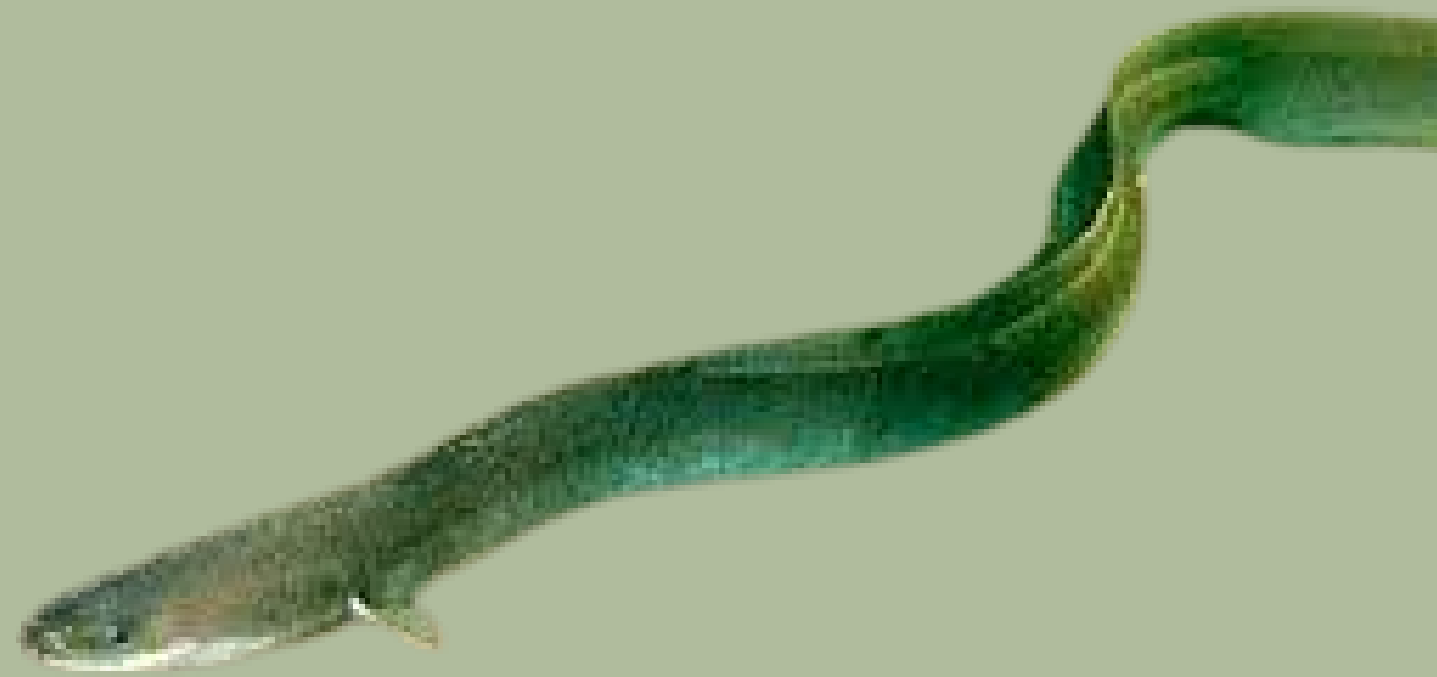
Climate warming

Protection

Fish passages
River restoration
Indicator of good river health



eel



Description

A fish with a long, slippery body, similar to a snake. It can grow over 1 meter long

Habitat

Lives in freshwater but reproduces in the sea

Life cycle

Born in the sea, grows in rivers, then returns to the sea to reproduce

Diet

Carnivorous: small fish, insects, worms. Mostly active at night

Threats

An endangered species due to fishing, pollution, and dams.

the sea lamprey

Habitat

The sea lamprey lives in the sea but swims up freshwater rivers to reproduce.

Life cycle

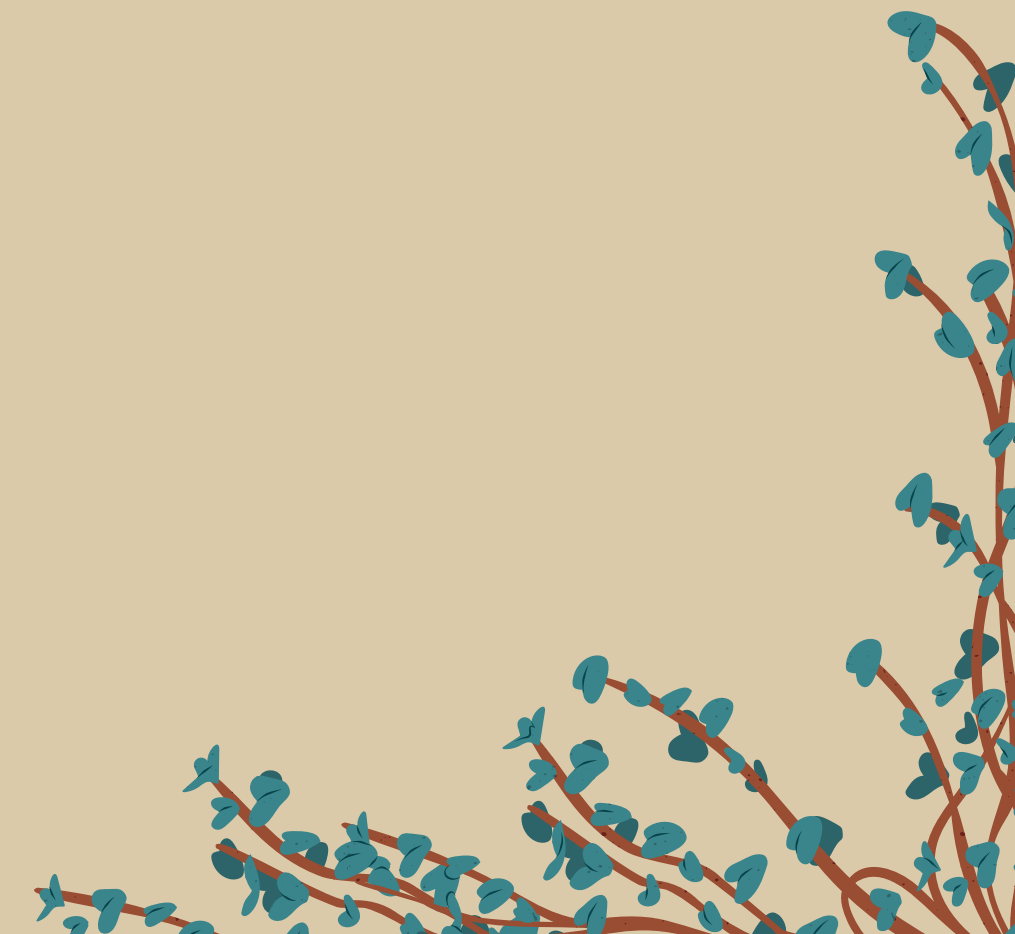
It begins life as a larva in rivers, then becomes an adult in the sea. After reproducing, it dies.

Diet

As an adult, it feeds by attaching itself to other fish and sucking their blood.

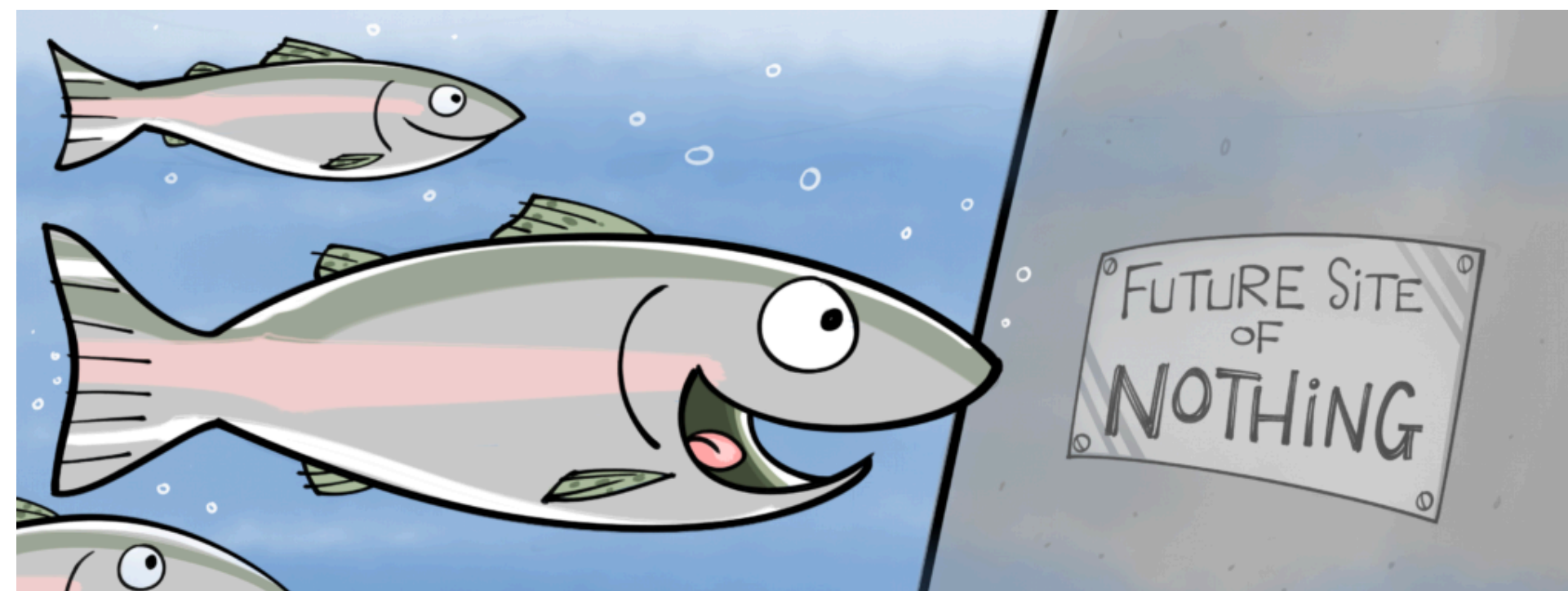
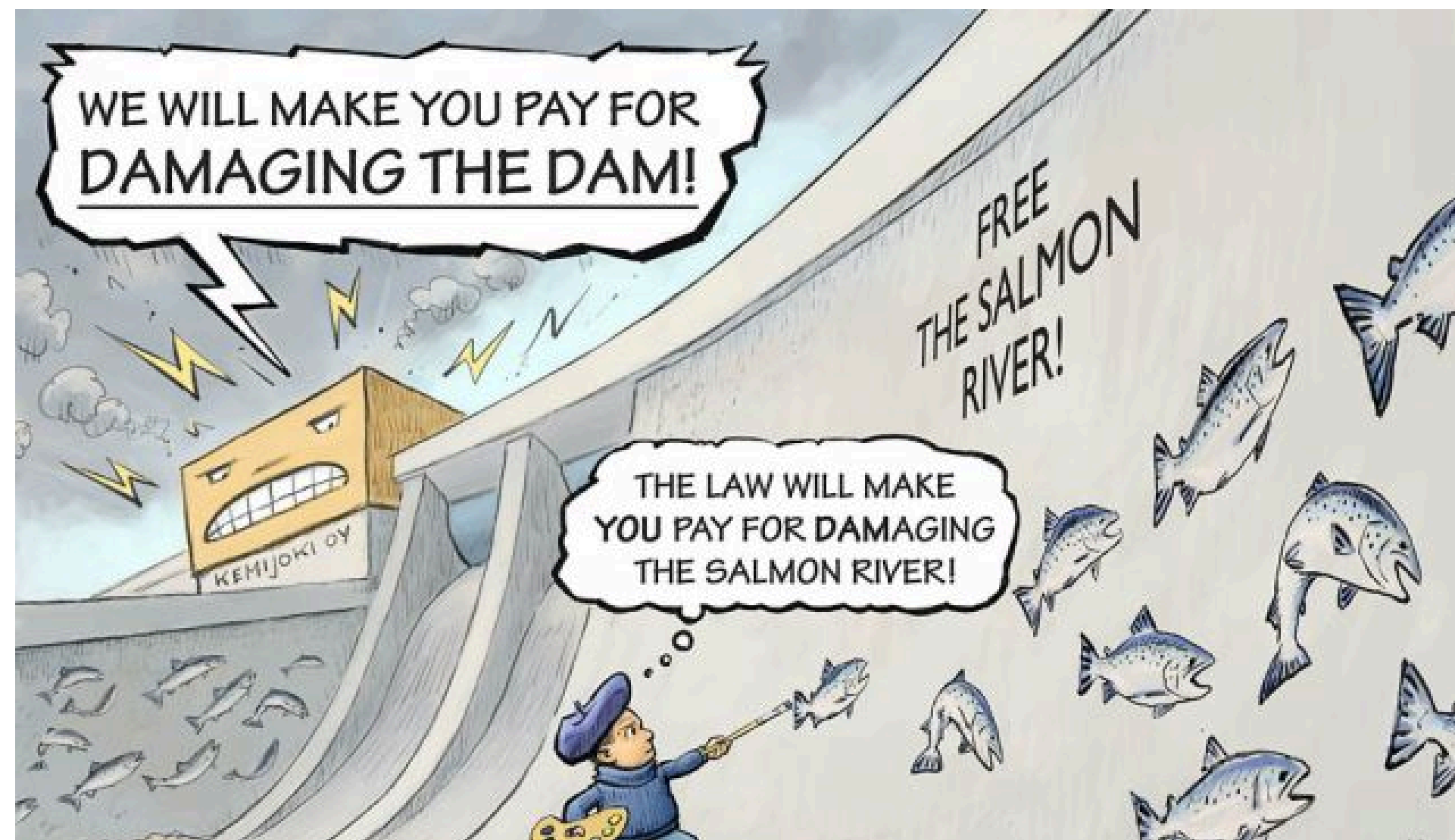
Threats

It is threatened by pollution, dams that block rivers, and the loss of its natural habitats.



Threats and problems

In Normandy, at least seven major migratory fish species are present (such as Atlantic salmon, sea trout, European eel, different lamprey species, and shad), and most of them are in strong decline or considered threatened at the national or regional level. This shows a general decline of migratory fish populations in Normandy's river basins.





Problems

On several rivers in Normandy, such as the Sélune (which flows into the Bay of Mont-Saint-Michel), migratory fish such as the Atlantic salmon, the European eel, and the sea lamprey were severely restricted in their migration to spawning grounds due to old, obsolete dams. These obstacles prevented fish from moving freely between the sea and the upstream sections of the rivers.

Solutions

On the Sélune River in Normandy, obsolete dams once prevented migratory fish such as Atlantic salmon from swimming upstream to reproduce. Between 2019 and 2022, the Vezins and La Roche-qui-Boit dams were dismantled. This action made it possible to restore the natural movement of fish and encourage the return of migratory species to the river.

Solutions to protect migratory fish

- Remove or modify dams
- Improve water quality
- Limit or ban fishing
- Maintain sufficient water flow
- Protect and restore habitats
- Monitor and raise public awareness

Objective: enable the migration and reproduction of threatened species (eel, salmon, lamprey).



Source :

_ seppo.net

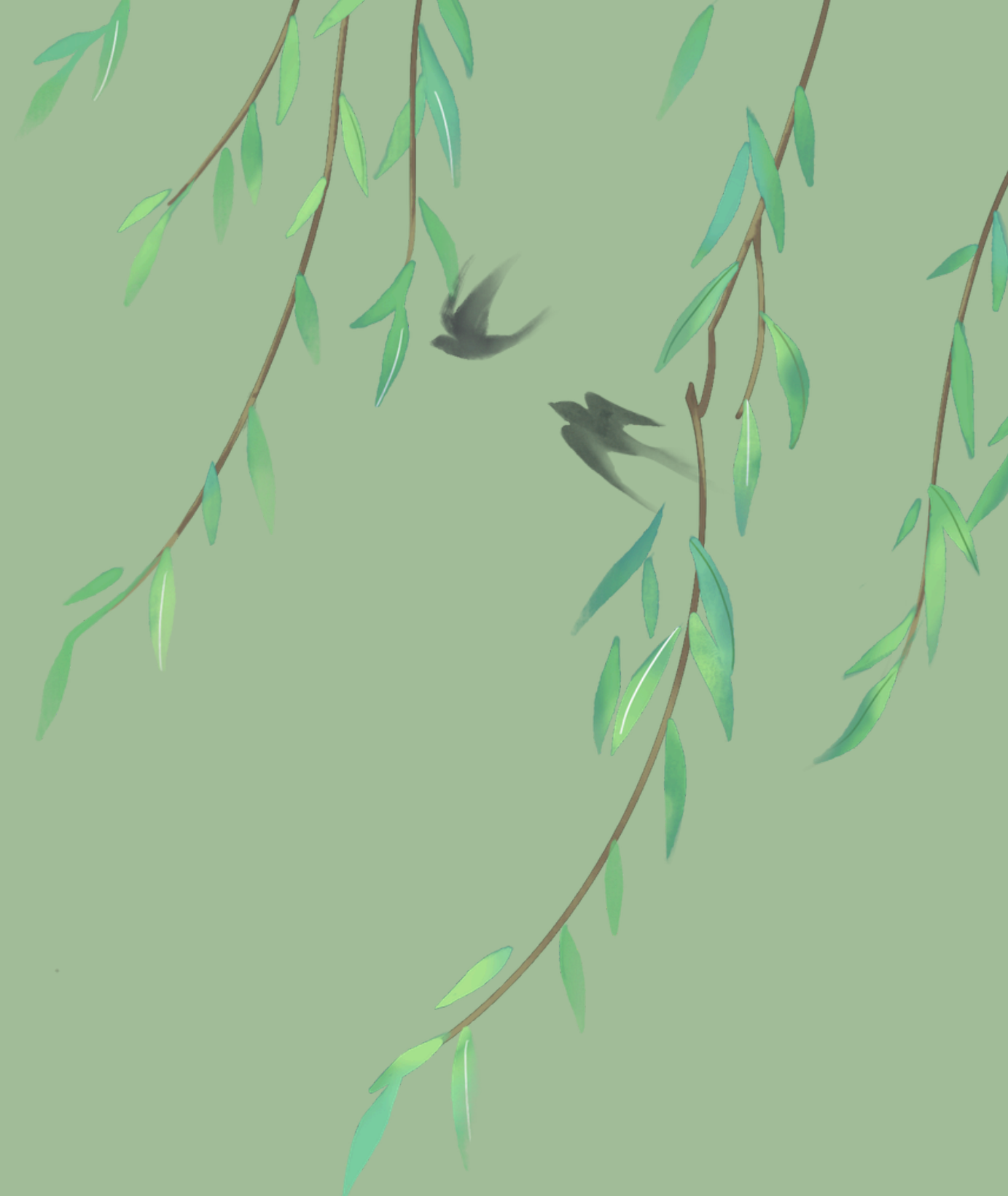


_ kqed.org

_ doris.ffesm.fr

_ federationpechedordogne.fr

_ peche-manche.com



**Groupe du lycée
agricole de Vire:**

**Ophélie GODEFROY
Lilian CHAPRON
Eliot LEVALLOIS**