

WATERWISE

magazine

TEAM D MARSH



In this magazine, you HAVE to :

- Logo Waterwise (below)
- Logo Europe
- Present your team (names / photos)
- Present what you do/learn every day (text in english + photo)
- Table of content
- For the rest you are free !



Team D

-Everyday something new-




Day one- Arrival Day -European Dinner-

All the Nations arrived at
the motel.

In the evening every
nations had a stand with
products which are made
in their country.



Luxemburg 



France 



Netherlands 



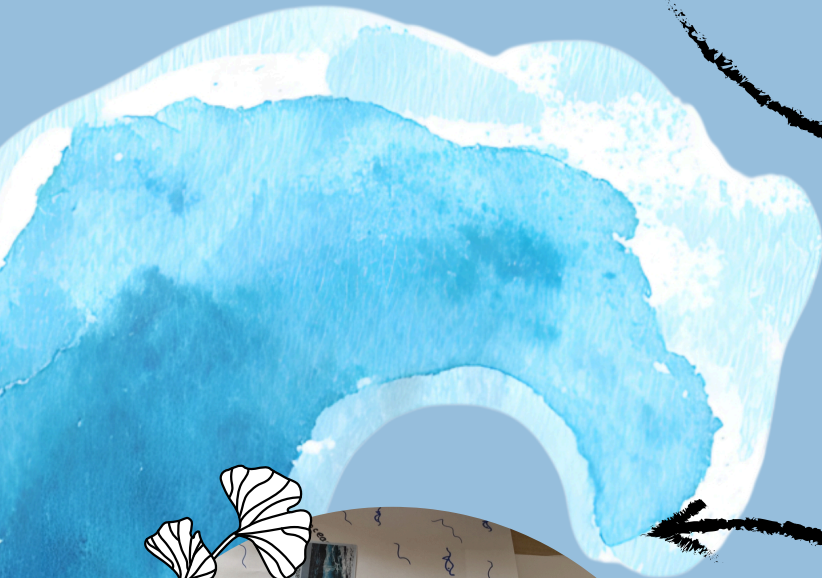
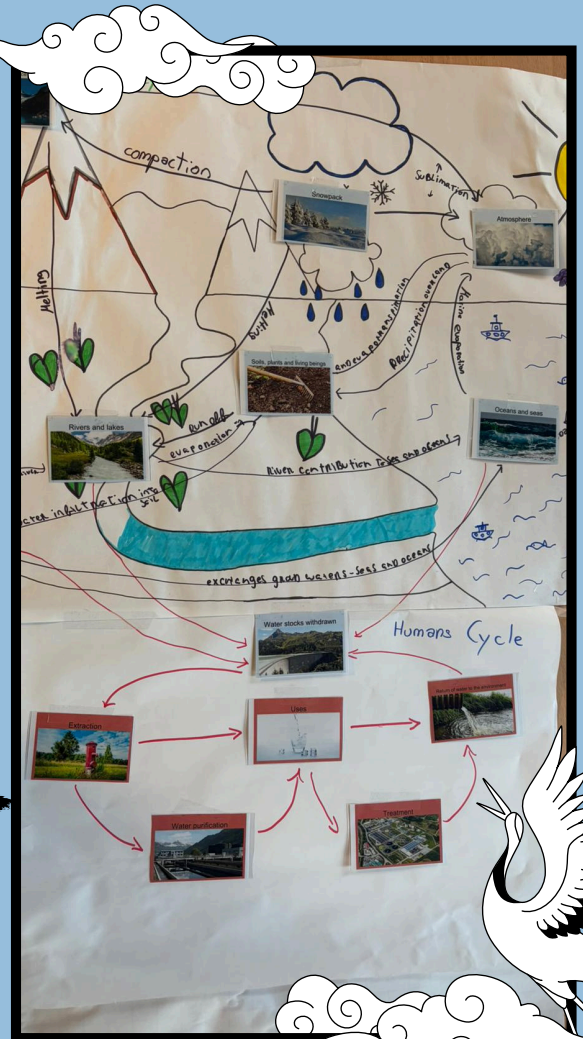
Germany 



Water puzzel

-The water cycle-

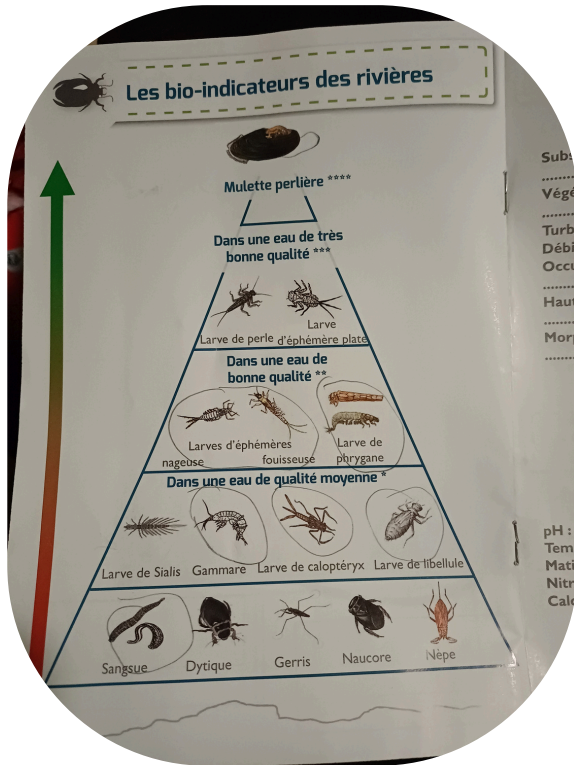
In our teams we learned more about the natural and the human water cycle. In this group poject we linked different water reservoirs with each other. Thereby, finding out how this water network works. Moreover, how detrimental the human water cycle affects the natural one.



-water uses at home-
We learned more about the daily water uses at home. Through a quiz we found out, that only 1% of our freshwater is for drinking. Moreover, the largest amount equals our bathing water.



Collines normandes pearl mussel



Observations sur le cours d'eau

Les résultats :	Idéal pour la moule :
Substrat de la rivière :	Substrat de la rivière : galets, sable, graviers
Végétation :	Végétation : arbres en berge, présence de forêt...
Turbidité :	Turbidité : faible
Débit :	Débit : fort
Occupation humaine :	Occupation humaine : intervention minimum
Hauteur d'eau :	Hauteur d'eau : minimum 10 cm
Morphologie du cours d'eau :	Morphologie du cours d'eau : méandres

Tests physico-chimiques

Les résultats :	Idéal pour la moule :
pH : 8 6,3 - 8
Température : < de 18°C
Matières en suspension : < 8 mg/L
Nitrates NO ₃ : < 8 mg/L
Calcaire (dureté) : < 10 mg/L

A SAVOIR Plus l'eau est fraîche et de bonne qualité, plus elle contient d'oxygène.

We went to a place where we studied pearl mussels

They taught us how to see if the quality of water was good for the mussel to live in it. By catching bugs and testing the HP, nitrate and the hardness of the limestone in the water

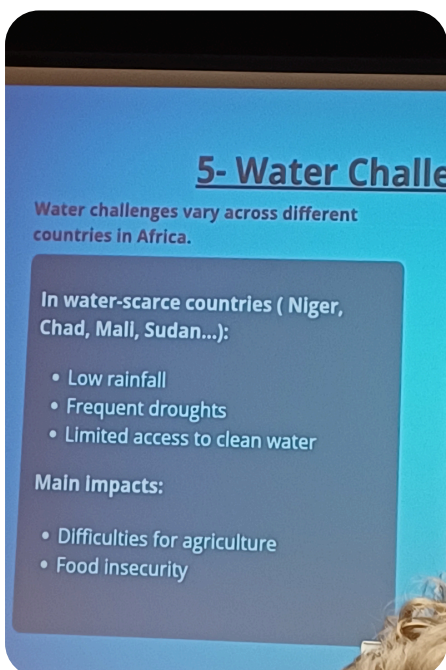
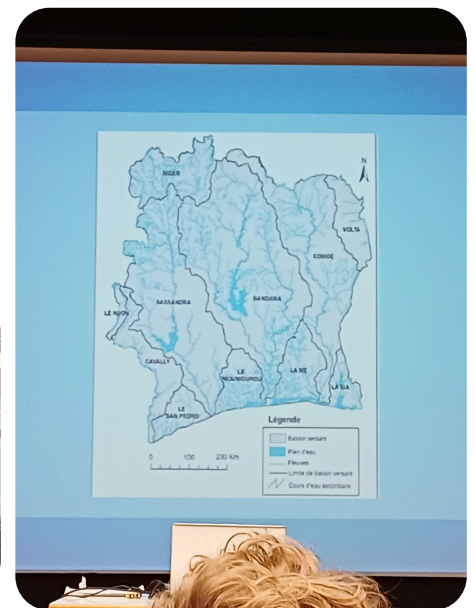
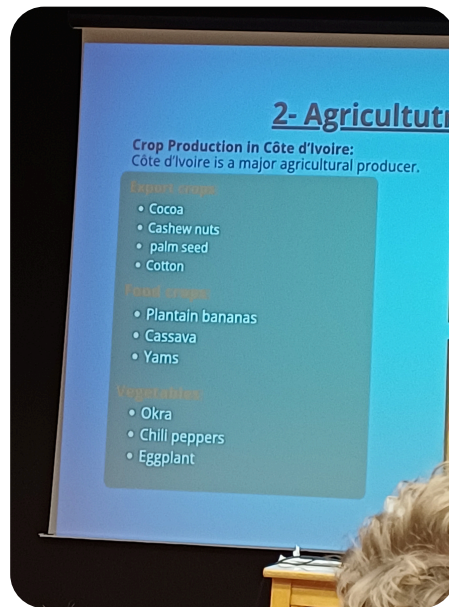
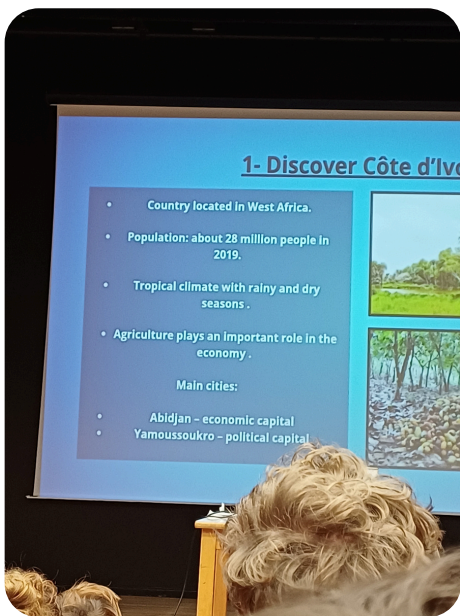


African dance





School visit: water challenges in Côte d'Ivoire



parc olivier atrin

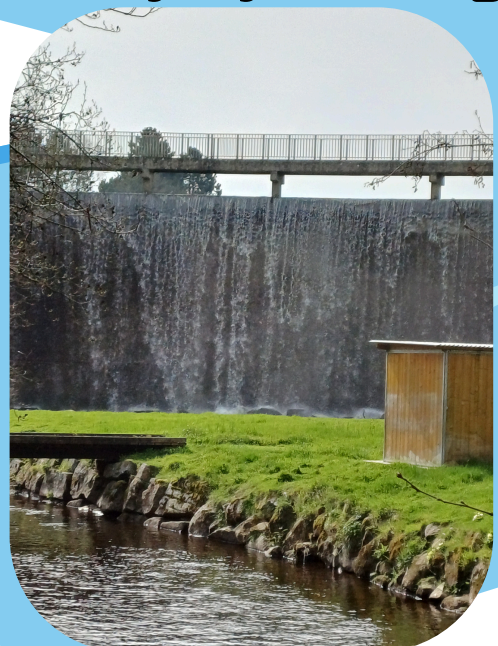


**Total with off the lake
Total area is 43 ha.**

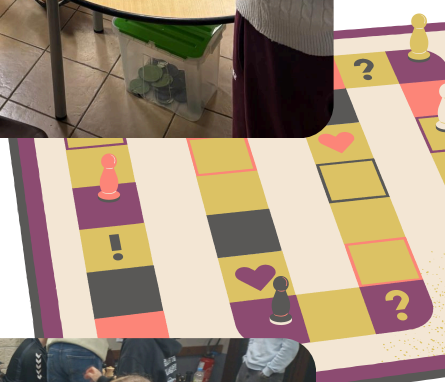
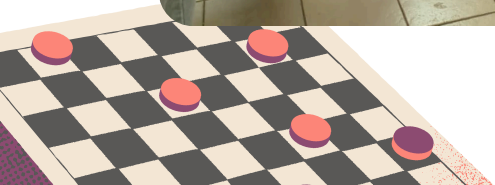
Total volume is 1 500 000 m³

**the municipaity manages
the lake so that it
Does not overflow, it is an
artificial lake**

**We learnd that salmons
swim 10 000km to go to
the
Place they lay there eggs**



Game night



Water cleaning

Honfleur water traitement plants



Honfleur



We had some free time to explore the village and saw a lot of nice buildings



Caen

We also went to Caen where we did a treasure hunt and had free time.

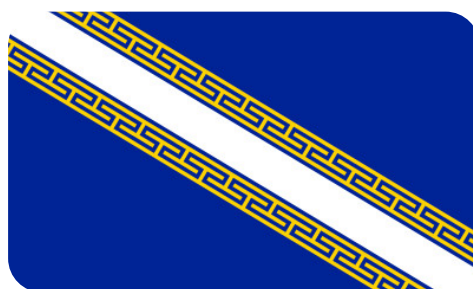
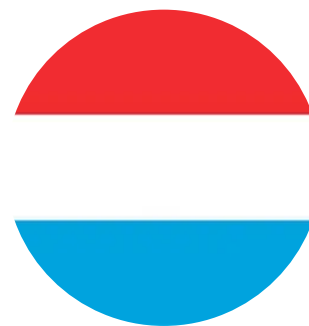
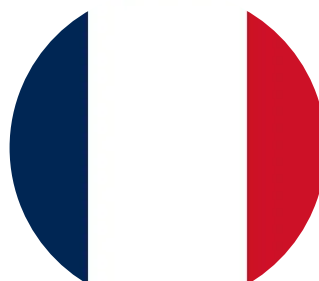
We also saw nice buidings there.



Sport activities



Shanna DIJKSTRA (Neth)
Noah DAVID (Fr -Vire)
Robin BRIERE (Vire)
Mia NEGRETTI (Lux)
Anna FEUCHTGRUBER (Germ)
Célian GALLOT (Fr - St Pouange)
Océane DAMEY (Fr - St Pouange)



Erasmus+