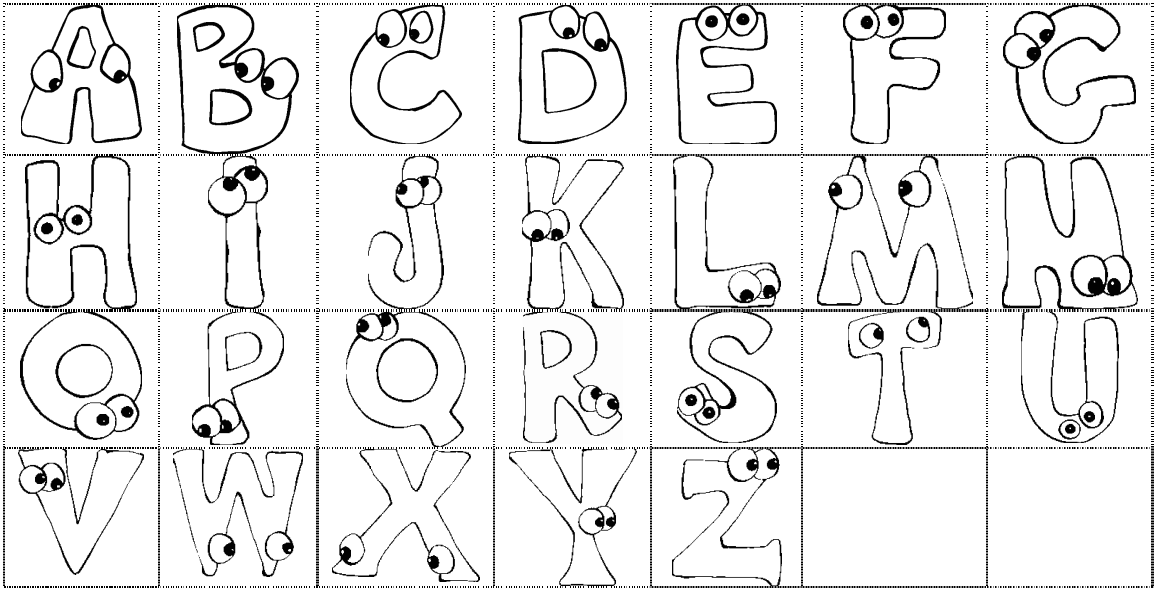


Colorie les différentes lettres de l'alphabet selon leur prononciation



Grey

[eɪ]



Green

[i:]



Red

[e]



White

[aɪ]



Yellow

[əʊ]



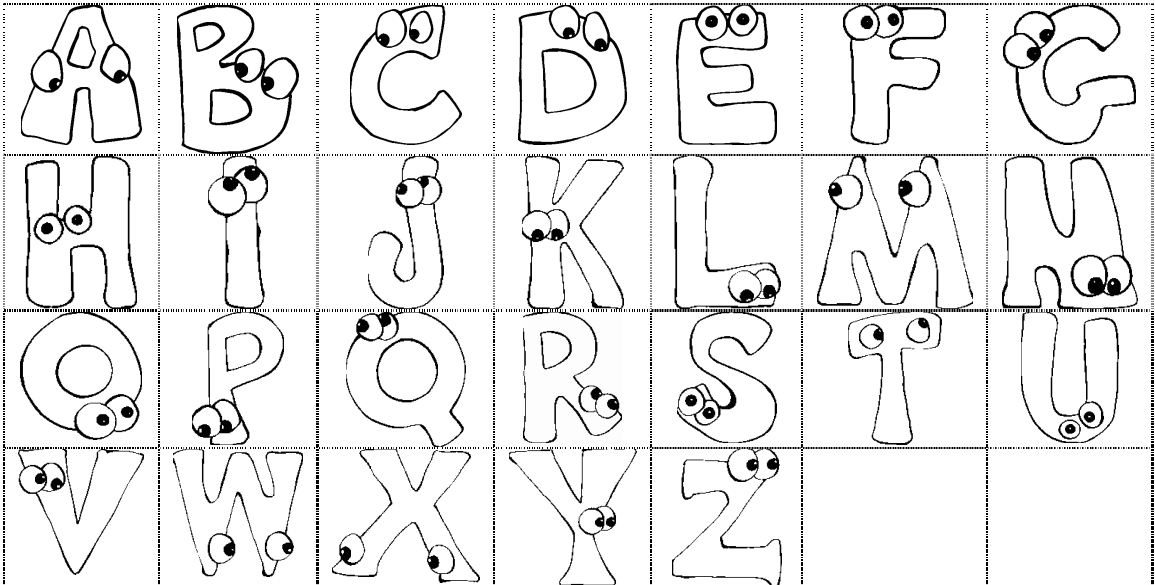
Blue

[u:]



[ɑ:]

Colorie les différentes lettres de l'alphabet selon leur prononciation



Grey

[eɪ]



Green

[i:]



Red

[e]



White

[aɪ]



Yellow

[əʊ]



Blue

[u:]



[ɑ:]