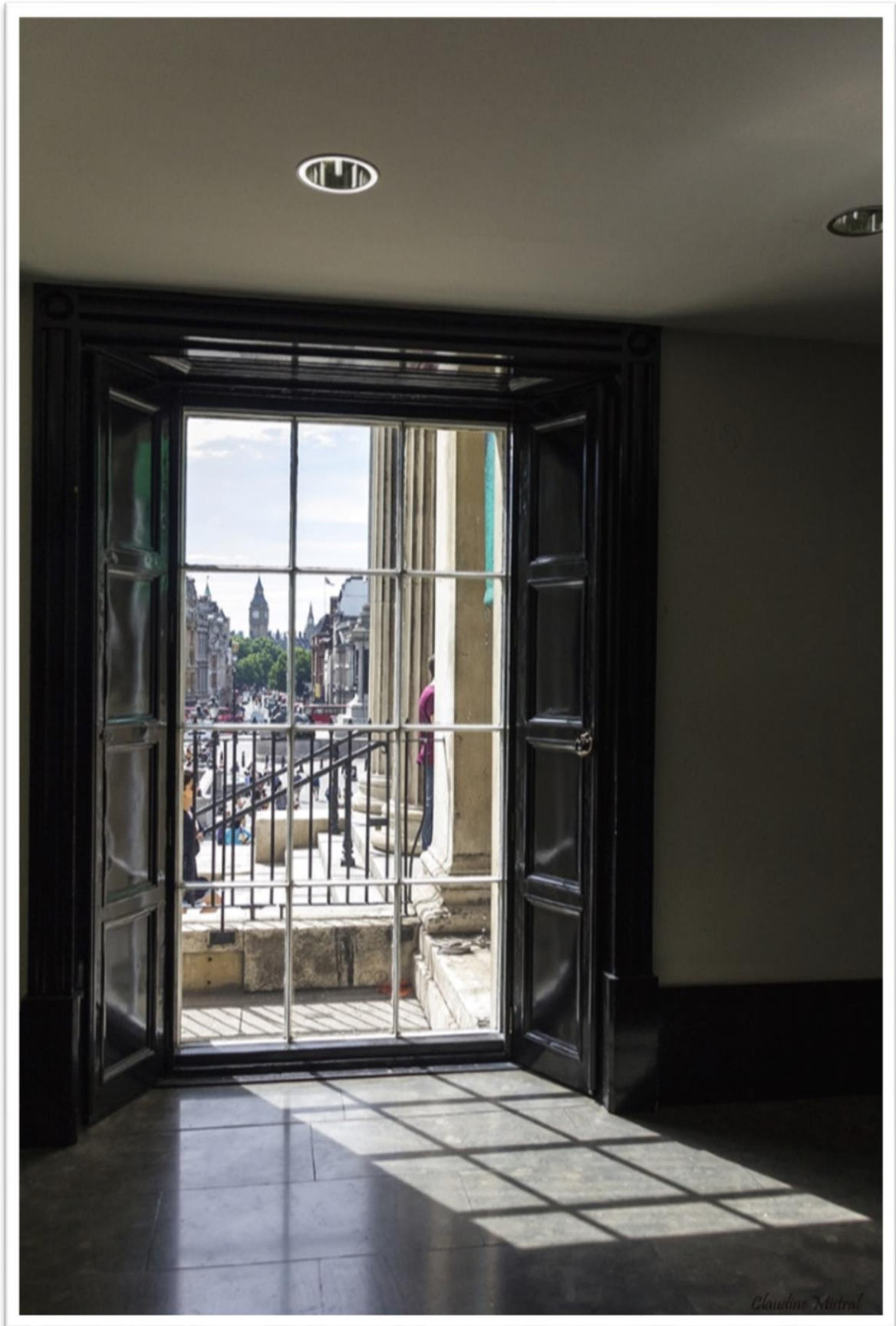


## Voyage à Londres



*Claudine Mistral*

The National Gallery



*Claudine Mistral*

Trafalgar Square



L'intérieur d'un pub anglais

Covent Garden



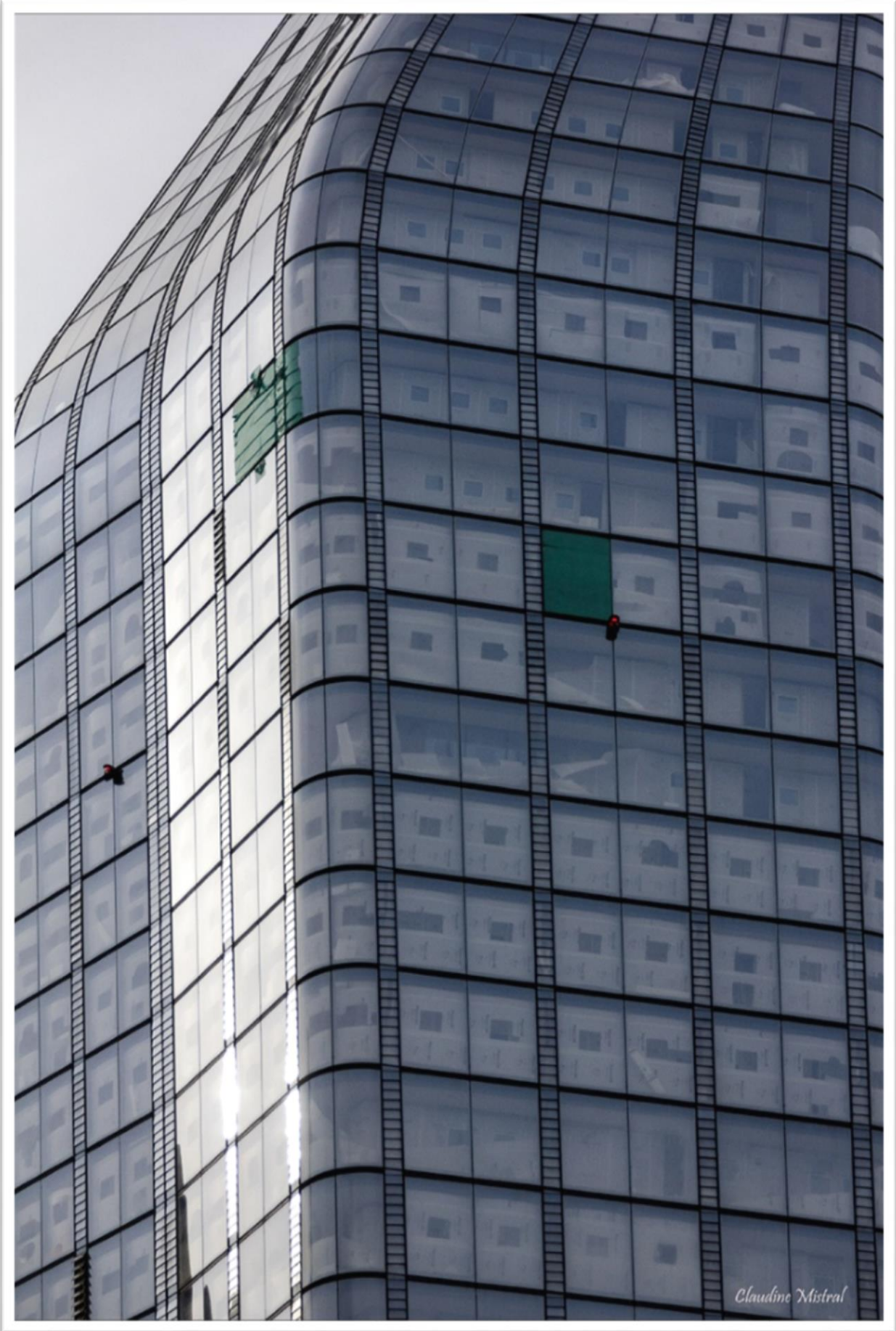
*Claudine Mistral*

Musée des transports à Covent garden



*Claudino Mistral*

Un building



Big Ben

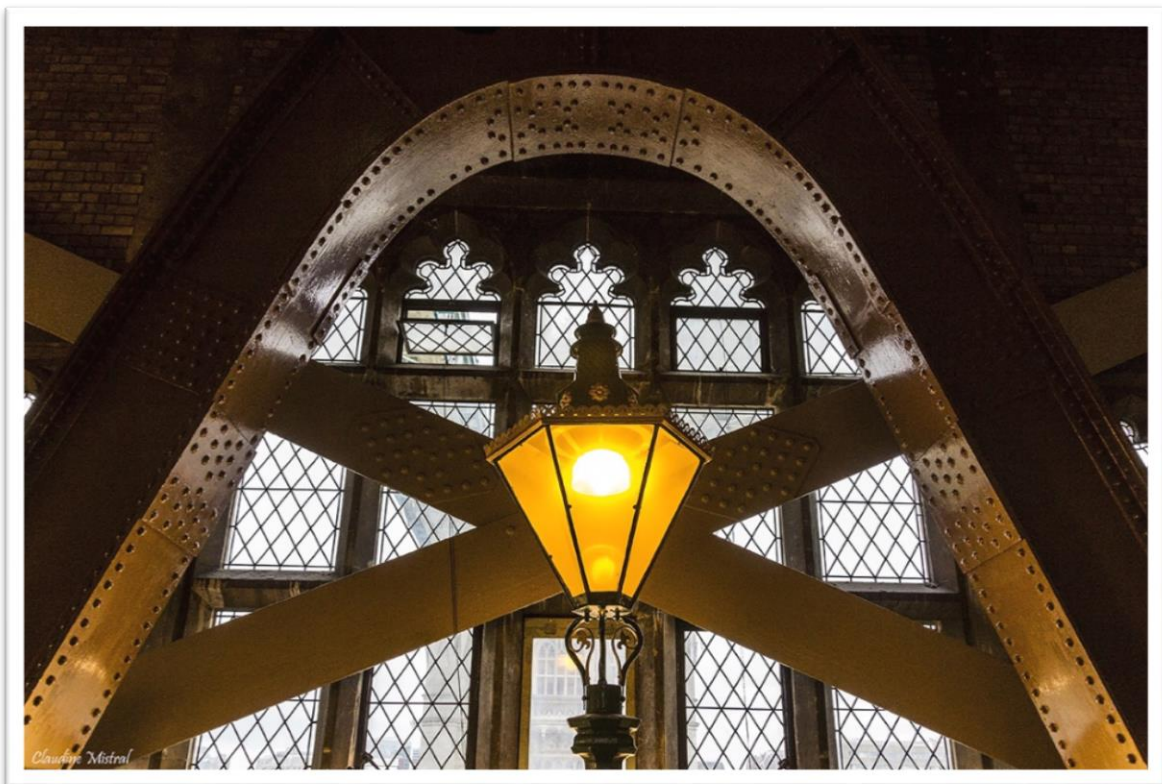


*Claudia's World*



Entrée de Green Park

Lanterne dans Tower Bridge (La tour du pont)





Vues sur la Tamise de Tower Bridge



Tower Bridge



*Claudine Mistral*



The Hall (La mairie)

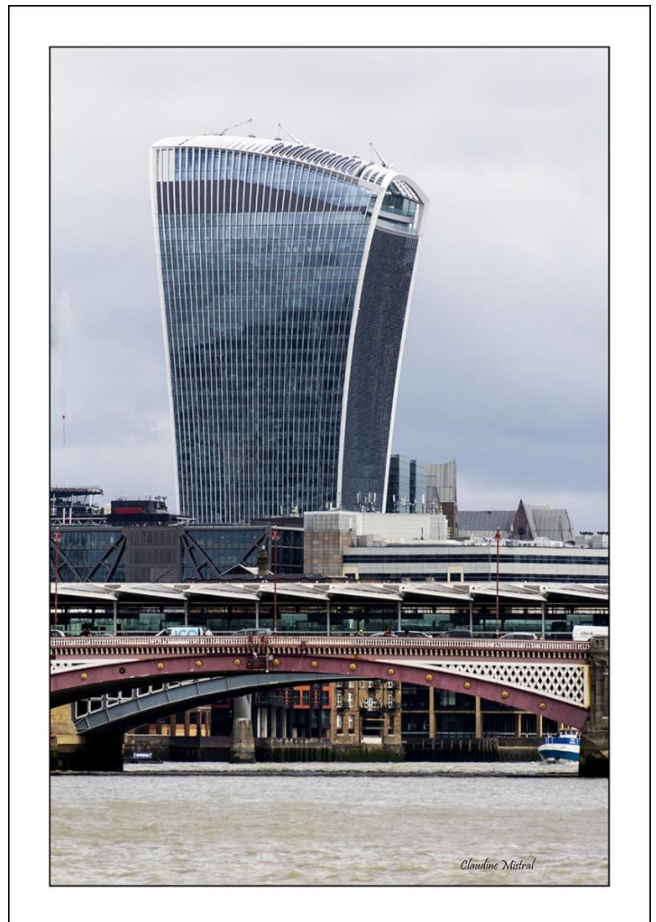
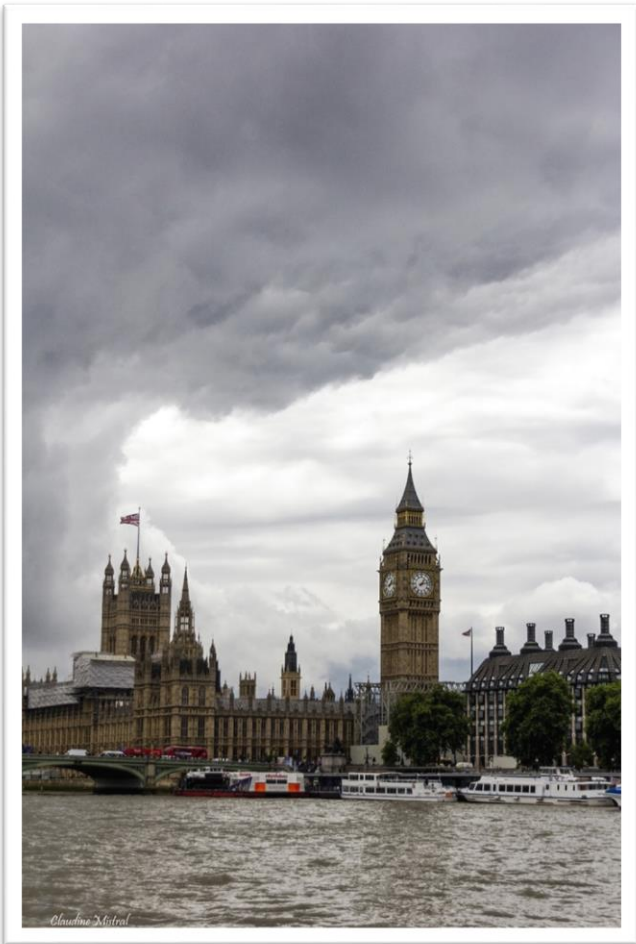


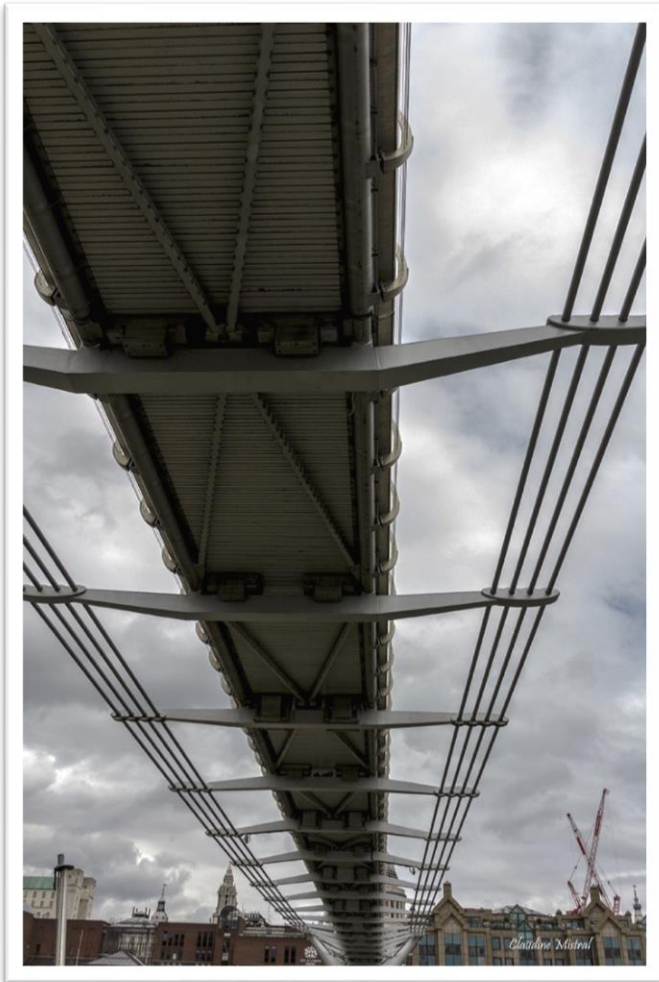
The Shark





London Eye



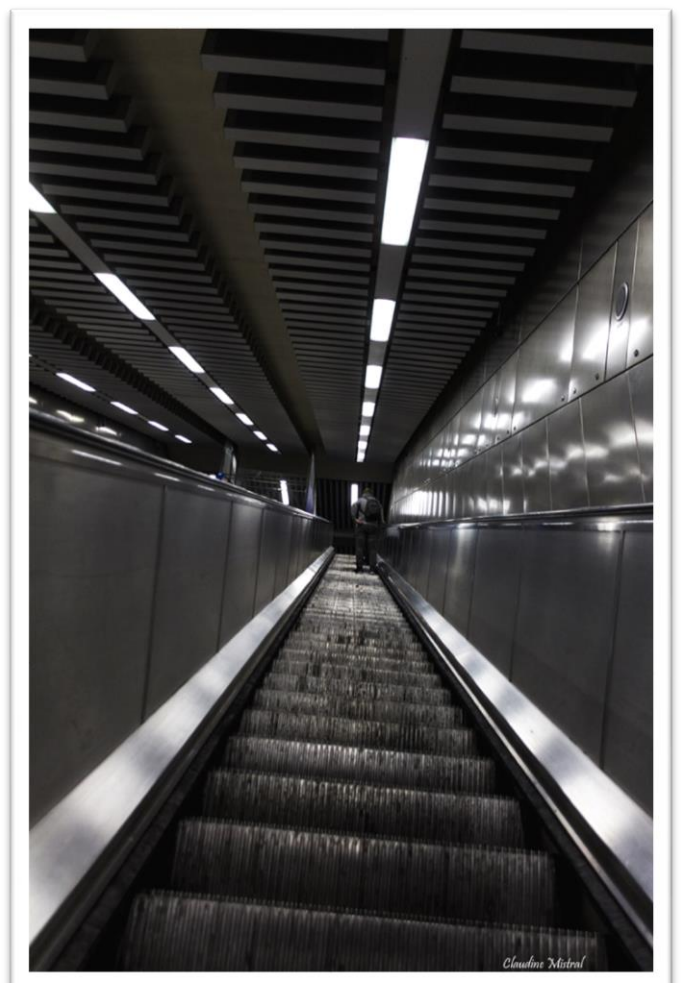
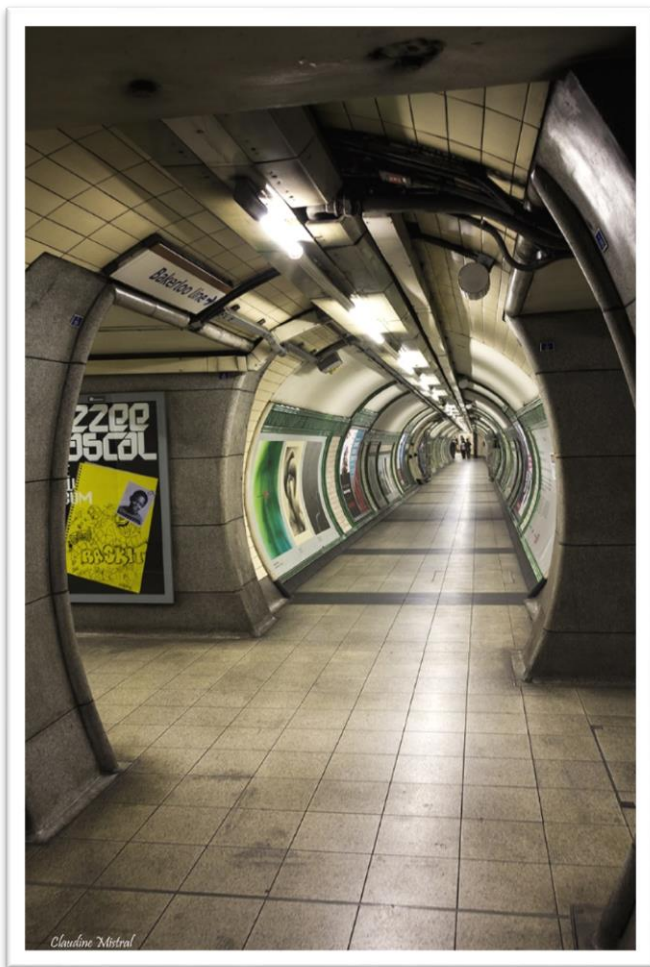


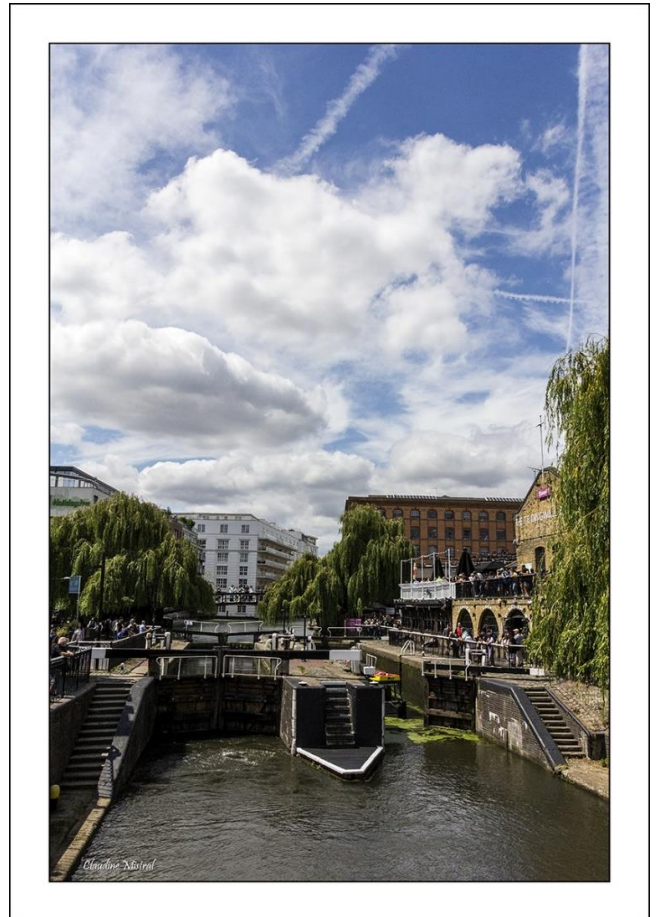
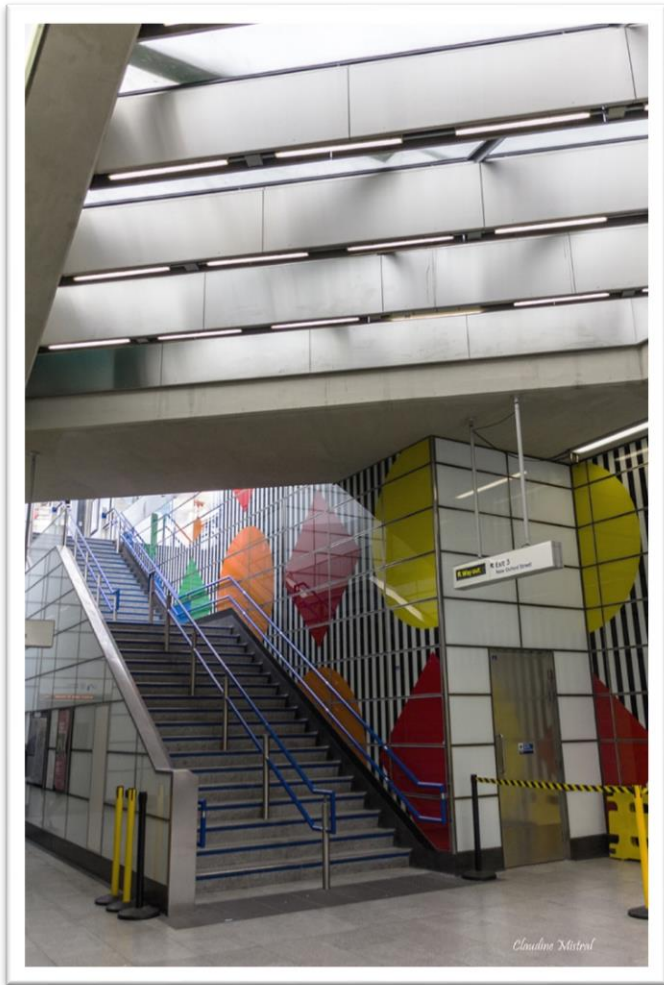
Sur la Tamise





Underground : métro

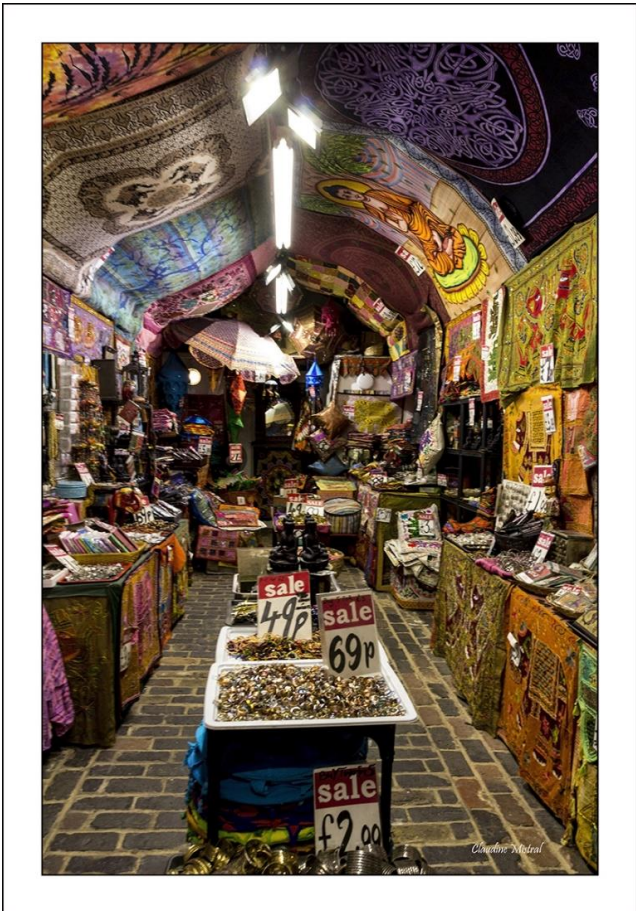
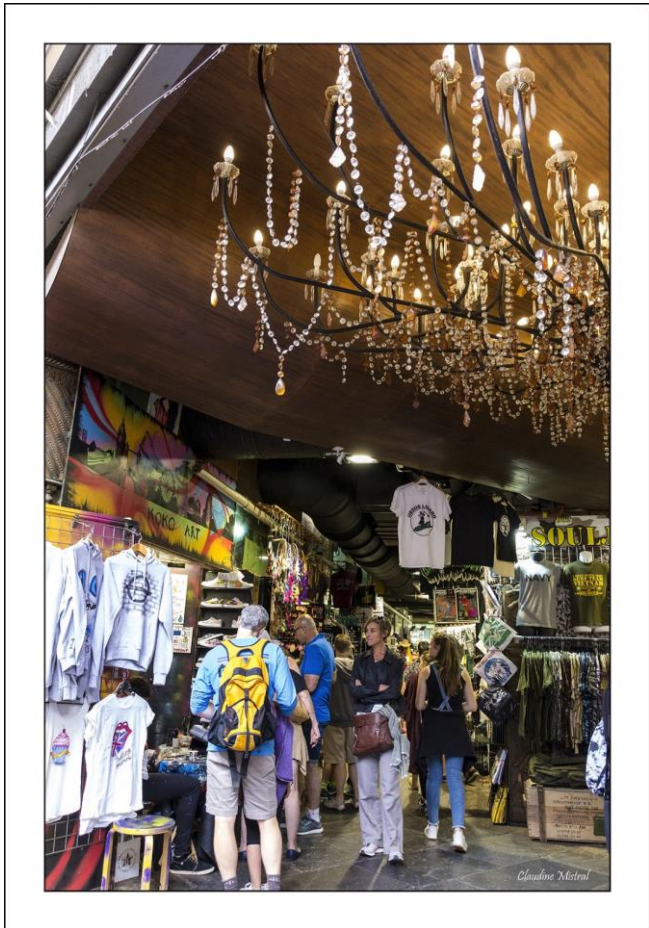
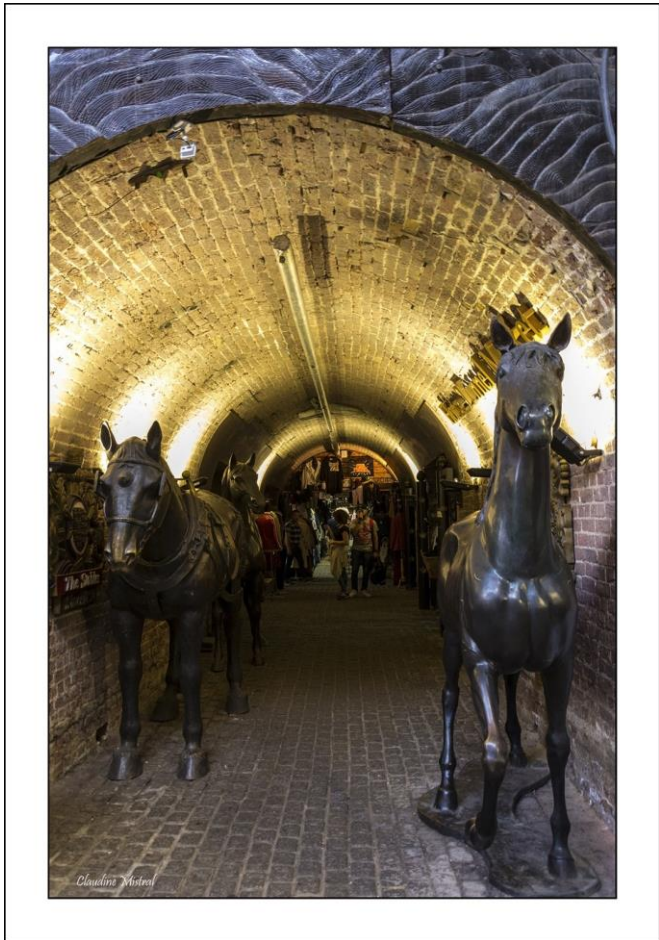


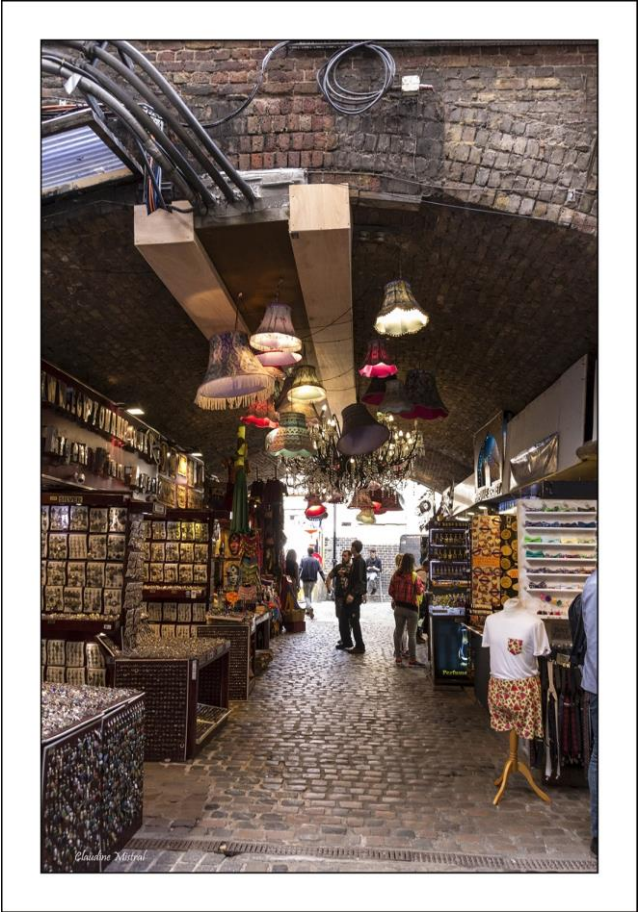


# Le quartier de Camdem



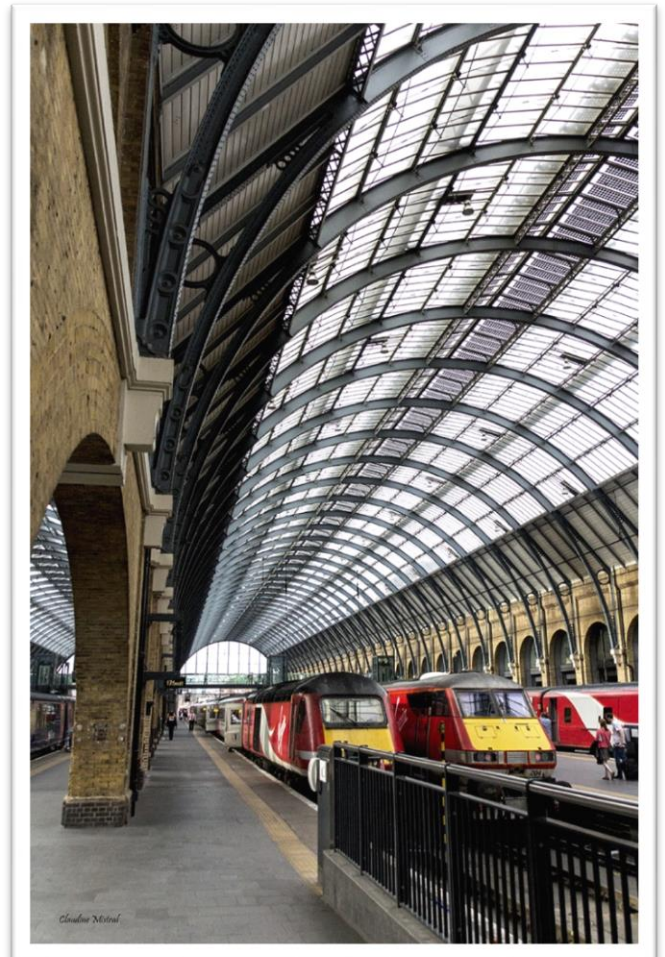
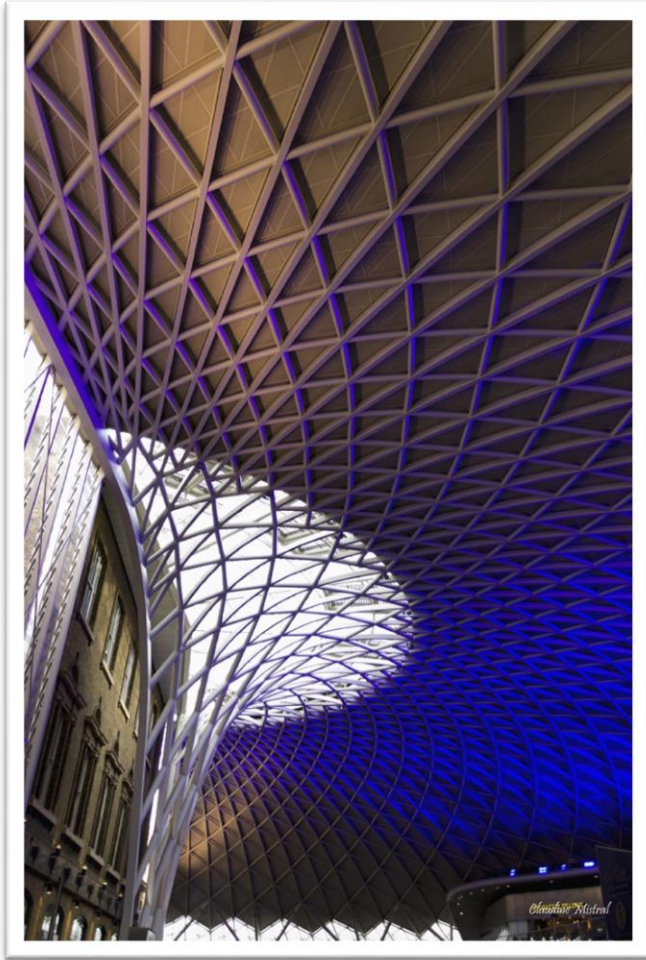








*Claudine Mistral*



Kingcross et le quai 9 <sup>3</sup>/<sub>4</sub> menant à Poudlard.

C'était un petit aperçu de la capitale anglaise et du Royaume-Uni.

A toi de découvrir la ville un jour...

