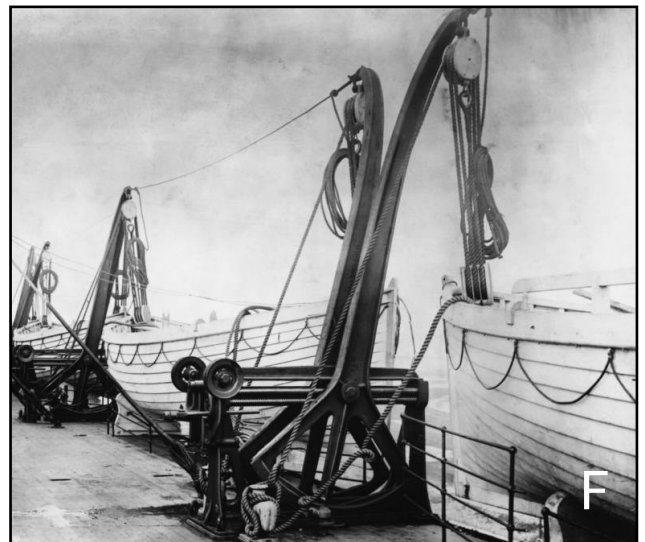
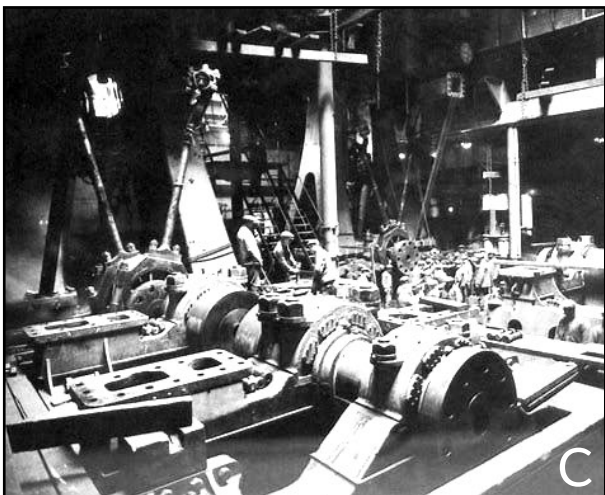
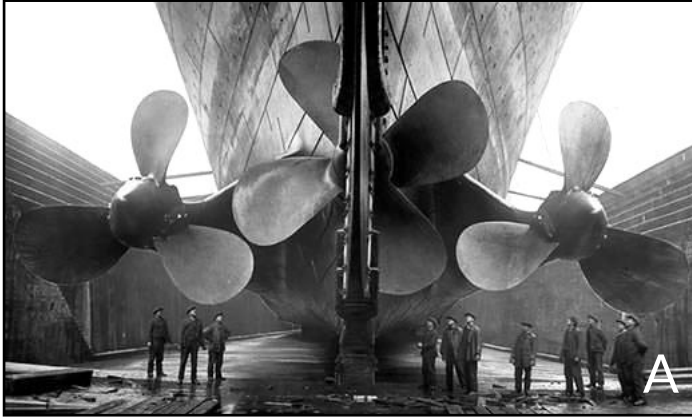


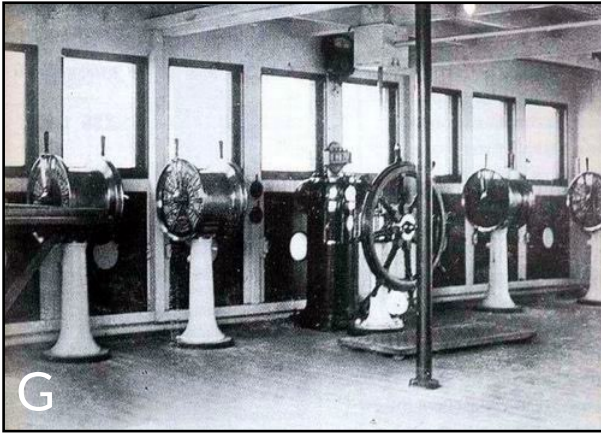
Lesson 1 : Explore the Mechanic of Titanic

ACTIVITY 1: To LEGEND each picture of the Titanic, USE the vocabulary.

the helm - the wheelhouse - the propellers - the rudder - the communication and signal room

the lifeboats on deck - a wheelhouse telegraph - the engine room - the boilers





.....

ACTIVITY 2: Vocabulary from the investigation game

R.M.S. = R.....
 M..... S.....

the (n.) = the ship boss

the (n.) = the ship team,
 staff members

the (n.) = the departure

.....(adj.) = famous,
 well-known, everybody knows it.

..... (adj.) = famous
 because of a bad reason or reputation

..... (adj.) = far down under the
 surface of water or under ground

..... (adj.) = the opposite of wet,
 without water

..... (n.) = vapour

..... (n.) = black carbon
 mineral used as a fuel when burnt

..... (n.) = metal pins

a (n.) = an object
 people can blow in to make a sound and call
 for help

a(n.) = a
 jacket to float in water and to be safe.

an (n.) = a giant
 floating ice cube in the ocean or at sea

to (v. irr.) = the opposite of
 to float, to become submerged and to go
 deep down the bottom of water

ACTIVITY 3: LEGEND the picture of the Titanic — DEFINITIONS

1. Traditionally, the **bow** is decorated with a woman figure.
2. The **stern** bears the flag(s) of the country where the ship parks.
3. **Portside** and **starboard** are used to avoid confusions between the two sides of the ship when at sea.
4. There were not enough **lifeboats** onboard the Titanic to rescue all passengers.
5. There were many **decks** on the Titanic where passengers could walk their dogs or take sunbathes ; the passengers classes were separated.
6. On the night of the disaster, the crew members on the **look-out post** were not able to see the iceberg in time.
7. The **keel** is the axis of the ship, situated under it.
8. The **waterline** is calculated by the ship engineers. This line marked on the outside of the ship corresponds with the water's surface when the ship is afloat.
9. The **hull** is the metal shell of the ship.
- 10.The **portholes** are openings in the side of a ship through which light comes from the outside and from which passengers can watch the sea.
- 11.Positioned underwater at the stern of a ship, the **rudder** is a blade controlled by the helm. And that makes the ship turn.
- 12.The three massive **propellers** of the Titanic were pieces of machinery composed of three blades that twist underwater and propel the ship to make it move.
- 13.The **funnels** are designed for the escape of steam smoke from the ship engine. There were four on the Titanic.

