

## Romantic royals

1 Match the words with their meanings.

assassinate captain divorce  
governor navy royal ~~weird~~

- 1 very strange ..... weird
- 2 the most important person on a ship; an army officer .....
- 3 a group of people that fight in ships on the sea for their country .....
- 4 to stop being married .....
- 5 to kill someone for political reasons .....
- 6 belonging to a king's or queen's family .....
- 7 someone that makes the laws in a country that belongs to an empire .....

2 What is the family name of today's British royals? Put the underlined letters in activity 1 in order to find it.

W \_ \_ \_ \_ \_

3 Look at the photos. What do you know about Edward VIII and Prince Charles? Mark these sentences E (Edward) or C (Charles).

- 1 He was born in the 1890s.
- 2 He was born in the 1940s.
- 3 He used to talk to plants.
- 4 He left the throne of England for love.
- 5 He married an American.
- 6 He has two sons - William and Harry.

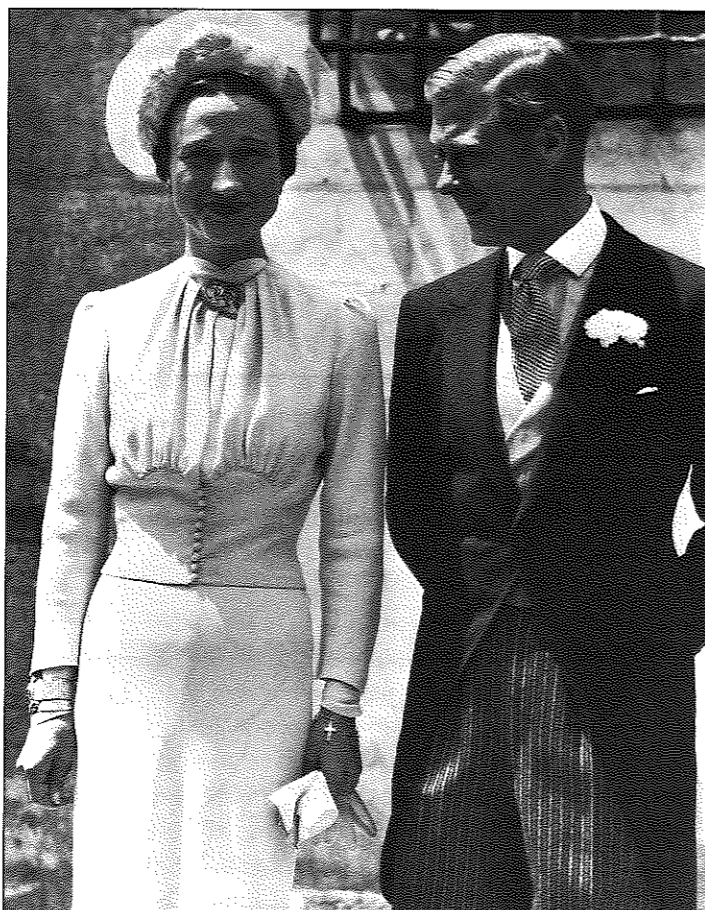
What do you think? Read the texts to check your ideas.

### Edward VIII and Wallace Simpson

Edward VIII was the son of King George V. He was born in 1894. Like all the oldest sons of British Kings, he became Prince of Wales. He was handsome and popular with the British people, and he loved parties. When King George V died in 1936, Edward became king.

Edward wanted to marry an American, Wallace Simpson. She had divorced twice and the Archbishop\* of Canterbury said that the King (as the leader of the Church of England) could not marry a divorced woman.

After 11 months Edward gave up the throne of England for the woman that he loved. He became the Duke\* of Windsor. He married Wallace and spent the rest of his life abroad. He was the governor of the Bahamas for a time. Some people say that the Duke was friendly with the German leader, Adolf Hitler, because he hoped to go back to England as king if the Germans won the Second World War.



### Charles, Diana - and Camilla!

Prince Charles was born in Buckingham Palace in 1948. He had some weird habits when he was younger - like talking to plants. After school he studied at Cambridge University. Later he joined the Navy, and was the captain of a ship. In 1981 he married Lady Diana Spencer. They had two sons, William (born 1982) and Harry (born 1984). But Diana became unhappy when she learnt that Charles had a married lover, Camilla Parker-Bowles.



Charles had first met Camilla in 1970. He fell in love with her at once. But she was older than him, and she had had boyfriends before.

Camilla divorced her husband in 1995. In 1996 Charles and Diana divorced. The next year Diana died in a car crash in Paris. Some people think that she was assassinated. In 2005 Charles finally married the love of his life, Camilla Parker-Bowles.

4 Read the texts again. Join the sentences correctly.

- |  |  |
|--|--|
| 1 1936 was the year...                           | a that Edward married. <b>D</b>                              |
| 2 The Archbishop of Canterbury was the person... | b that Charles met Camilla. <b>T</b>                         |
| 3 Wallace Simpson was the woman...               | c that Edward VIII was king for 11 months. <b>A</b>          |
| 4 The Duke of Windsor was the title...           | d that the Duke was friendly with. <b>C</b>                  |
| 5 Adolf Hitler was the German leader...          | e that Edward was given after he left the throne. <b>I</b>   |
| 6 Cambridge was the university...                | f that said Edward couldn't marry a divorced woman. <b>B</b> |
| 7 1970 was the year...                           | g that Prince Charles studied at. <b>A</b>                   |
| 8 1981 was the year...                           | h that Princess Diana died. <b>O</b>                         |
| 9 1997 was the year...                           | i that Charles married Camilla. <b>N</b>                     |
| 10 2005 was the year...                          | j that Charles married Lady Diana Spencer. <b>I</b>          |

5 What do we call it when a king gives up the throne because he doesn't want to rule anymore? Put the letters in the hearts in order to find the word.

A \_ \_ \_ \_ \_

\* What is it in your language? Find out!

### Personal Project

- Were there any famous royal couples in your country's history? What happened to them?
- Choose one royal couple and find out more about them.