

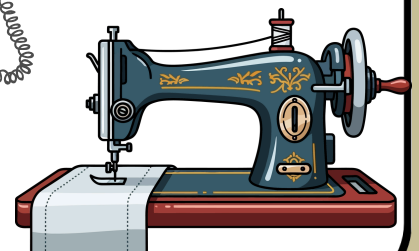
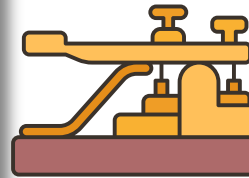
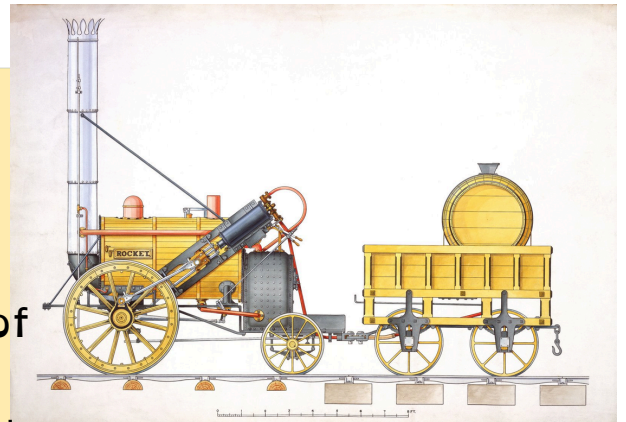
# Victorian Era



Victoria (24 May 1819 – 22 January 1901) was Queen from 20 June 1837 until her death in 1901. Her reign of 63 years constituted the Victorian era, a period of industrial, political, scientific, and military change within the United Kingdom marked by a great expansion of the British Empire.

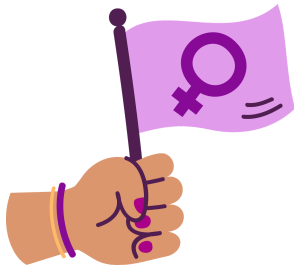
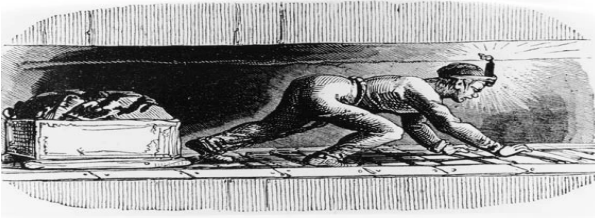
## Technologies

The steam engine, perfected by James Watt, became the universal power source. The "Railway Mania" of the 1840s covered the UK in tracks. Steam locomotives (like Stephenson's Rocket) transported goods and passengers at unprecedented speeds. London inaugurated the world's first underground railway in 1863. In 1866, the first functional transatlantic telegraph cable linked Europe to America. The Sewing Machine: It revolutionized the clothing industry and domestic work.



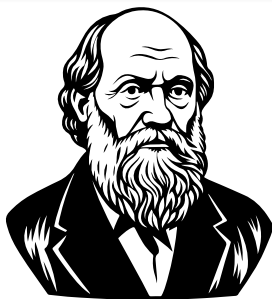
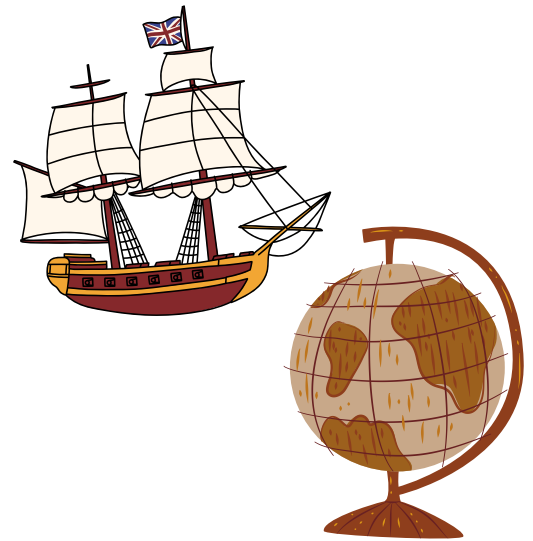
## Society

Hard work, respectability, family discipline, and temperance were hailed as supreme virtues. Women were often confined to the role of the "Angel in the House," although suffragist movements began to emerge toward the end of the period. Cities like London expanded chaotically, leading to sanitation issues and cholera epidemics. Child Labor was common in mines and textile factories



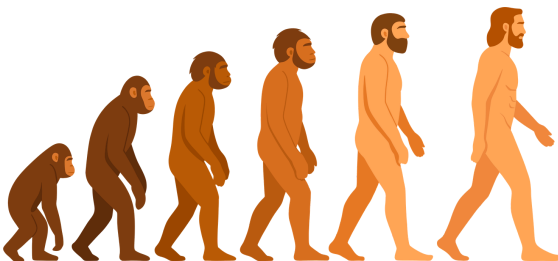
## British Empire

This was the era of triumphant imperialism. The Empire expanded to cover a quarter of the globe (India, Africa, Canada, Australia). British dominance was secured by the Royal Navy, ensuring what was known as the Pax Britannica.



## Science

The publication of *On the Origin of Species* (1859) by Charles Darwin caused an intellectual earthquake by introducing the theory of evolution. Major progress was made in anesthesia and antisepsis, transforming surgical practices.



# Reading



## **DOMAINE 1:**

Comprendre, s'exprimer en utilisant une langue étrangère.

## **Comprendre l'écrit**

Peut comprendre des textes rédigés dans un langage simple, qui décrivent des gens, des lieux, la vie et la culture quotidienne. A2

1) Combien de temps a régné la Reine Victoria ?

-----

2) Quelle invention James Watt a-t-il perfectionné ?

-----

3) Quel nom Stephenson a-t-il donné à sa locomotive ?

-----

4) Quelle invention a révolutionné la communication ?

-----

5) Quel était la condition des femmes et des enfants ?

-----

-----

6) Quel était la taille de l'Empire Britannique ?

-----

7) Quel théorie scientifique ébranle la société ?

-----

-----