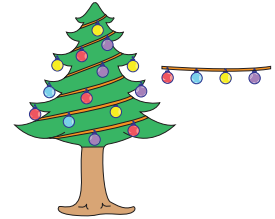


Name : \_\_\_\_\_

## Dividing Fractions

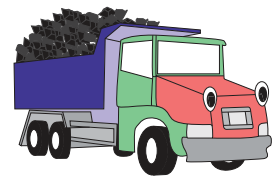
Sheet 3

- 1) A string Christmas light measures 72 inches. If the bulbs on the string are spaced  $1\frac{1}{2}$  inches apart, how many bulbs in all are fixed on it?



\_\_\_\_\_

- 2) A total of  $41\frac{1}{3}$  tons of gravel was split in equal amounts and loaded into four dump trucks. How many tons of gravel were loaded into each truck?



\_\_\_\_\_

- 3) A retail shop packed 120 pounds of beef into 6 equal portions. How many pounds of beef are in each pack of steak?



\_\_\_\_\_

- 4) A chocolate marshmallow mix and 100 grams of peanut candies are used to make 5 batches of candy. How many grams of peanut candies are used to make one batch?



\_\_\_\_\_

- 5) A rectangular lawn is  $9\frac{3}{4}$  feet long and its area measures 54 square feet. Find the width of the lawn. (Area of a rectangle = length \* width)



\_\_\_\_\_

# PREVIEW

Gain complete access to the largest collection of worksheets in all subjects!

Members, please log in to download this worksheet.

Not a member? Please sign up to gain complete access.

www.mathworksheets4kids.com

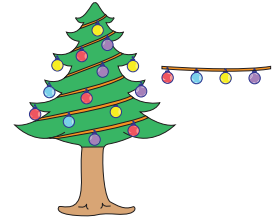
Name : \_\_\_\_\_

## Answer Key

### Dividing Fractions

Sheet 3

- 1) A string Christmas light measures 72 inches. If the bulbs on the string are spaced  $1\frac{1}{2}$  inches apart, how many bulbs in all are fixed on it?



**48 bulbs**

---

- 2) A total of  $41\frac{1}{3}$  tons of gravel was split in equal amounts and loaded into four dump trucks. How many tons of gravel were loaded into each truck?

**$10\frac{1}{3}$  tons**

---



- 3) A retail shop packed 100 pounds of meat into 40 packages. How many pounds of meat are in each package?

**$2\frac{1}{4}$  pounds**

---

Gain complete access to the largest collection of worksheets in all subjects!

Members, please log in to download this worksheet.

Not a member? Please sign up to gain complete access.

- 4) A pack of 10 pounds of ribeye steaks is divided into 5 equal portions. How many pounds of steak are in each pack of steak?



- 5) A chocolate marble cake is divided into 15 equal portions. How many portions of peanut candies are in each batch?

**$1\frac{2}{15}$  barrels**

---



- 6) A rectangular lawn is  $9\frac{3}{4}$  feet long and its area measures 54 square feet. Find the width of the lawn. (Area of a rectangle = length \* width)

**$5\frac{7}{13}$  feet**

---

