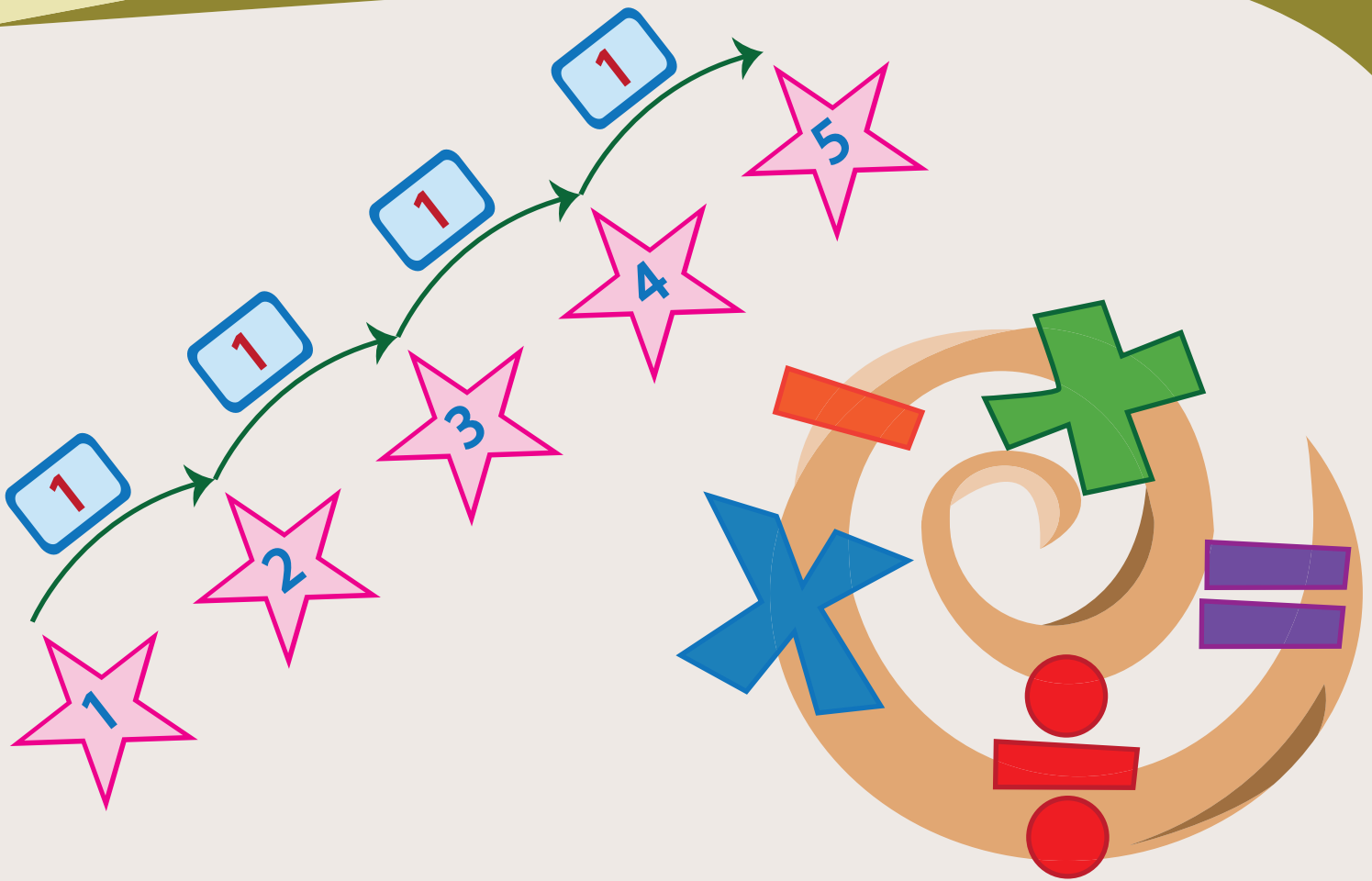


5th
Grade

Operations and Algebraic Thinking



Workbook 1

Order of Operations: Basic

E

Solve.

1) $8 + 96 \div 2$

Ans =

2) $23 \times 4 - 28$

Ans =

3) $42 \div 6 - 3$

Ans =

4) $17 \times 3 + 2$

Ans =

5) $79 - 12 \times 4$

Ans =

6) $3 \times 5 - 10$

Ans =

7) $90 \div 2 + 4$

Ans =

8) $8 + 10 \times 5$

Ans =

9) $3 + 5 \times 7$

Ans =

10) $42 - 15 \div 5$

Ans =

Order of Operations: Basic

M

Solve.

1) $85 \div 5 + 3$

Ans =

2) $42 - 27 \times 5$

Ans =

3) $6 \times 2 + 1$

Ans =

4) $70 \div 10 - 12$

Ans =

5) $73 - 9 \times 7$

Ans =

6) $1 + 39 \div 3$

Ans =

7) $20 \div 5 - 29$

Ans =

8) $8 \times 6 + 5$

Ans =

9) $5 \times 3 - 46$

Ans =

10) $26 + 18 \div 9$

Ans =

Order of Operations: Basic

D

Solve.

1) $19 + 6 \div (-3)$

Ans =

2) $10 \times (-2) - 8$

Ans =

3) $-2 \times 8 - 14$

Ans =

4) $45 \div 9 + 2$

Ans =

5) $54 - 16 \div 4$

Ans =

6) $13 - 20 \times (-3)$

Ans =

7) $21 \times 2 + 1$

Ans =

8) $48 \div (-4) + 2$

Ans =

9) $32 \div 2 - 4$

Ans =

10) $-5 - 4 \times 8$

Ans =

Order of Operations: Basic

E

Solve.

1) $5 + 8 \div 2 - 7$

Ans =

2) $12 \times 3 - 42 + 20$

Ans =

3) $4 \div 1 + 8 \times 2$

Ans =

4) $17 \times 3 + 15 \div 3$

Ans =

5) $29 - 6 \times 5 + 14$

Ans =

6) $31 \times 2 - 54 - 3$

Ans =

7) $16 \div 8 + 5 + 17$

Ans =

8) $28 + 4 \times 5 \div 5$

Ans =

9) $32 + 9 \times 6 - 84$

Ans =

10) $62 - 33 \div 3 + 14$

Ans =

Order of Operations: Basic

M

Solve.

1) $14 + 8 \div 2 - 53$

Ans =

2) $99 \div 3 - 3 \times 2$

Ans =

3) $7 \times 12 + 30 \div 3$

Ans =

4) $64 \div 8 - 5 - 13$

Ans =

5) $90 \div 9 - 7 \times 5$

Ans =

6) $6 + 35 \div 7 - 10$

Ans =

7) $7 \times 3 \div 3 - 26$

Ans =

8) $22 + 18 \times 2 + 4$

Ans =

9) $40 \div 8 \times 2 + 9$

Ans =

10) $2 \times 9 \times 3 - 87$

Ans =

Pages 6 to 20 are available only for members.

Subscribe for unrestricted access to
200+ workbooks and 30,000+ worksheets for
just **\$19.95/year.**

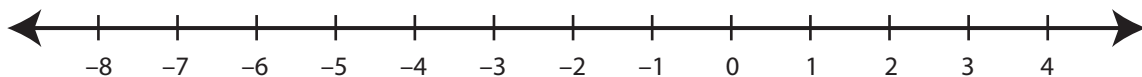
Scroll down for additional free pages.

Showing Pattern

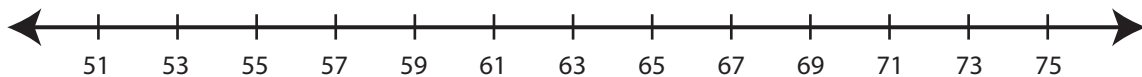
M

Read the rule. Draw hops to show the rule in each number line.

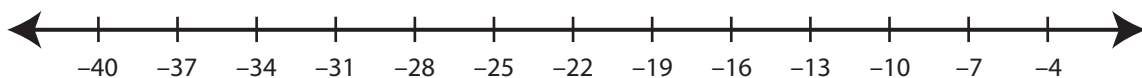
- 1) Start at 4. Subtract 2 each time.



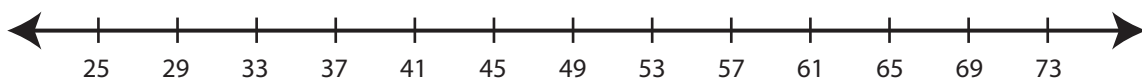
- 2) Start at 53. Add 6 each time.



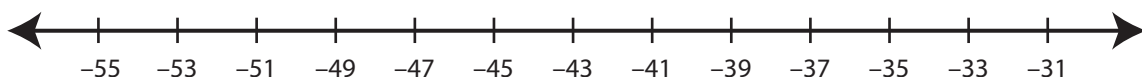
- 3) Start at -7. Subtract 9 each time.



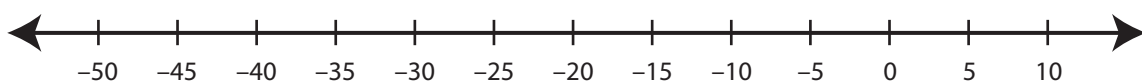
- 4) Start at 25. Add 12 each time.



- 5) Start at -55. Add 4 each time.



- 6) Start at 10. Subtract 10 each time.



Writing Rules

E

Look at the numbers. Write the rule describing each pattern.

1) 12, 15, 18, 21, 24, 27, 30, 33

Start at 12. Add 3 each time.

2) 45, 40, 35, 30, 25, 20, 15, 10

3) 6, 8, 10, 12, 14, 16, 18, 20

4) 20, 30, 40, 50, 60, 70, 80, 90

5) 56, 49, 42, 35, 28, 21, 14, 7

6) 11, 22, 33, 44, 55, 66, 77, 88

7) 81, 72, 63, 54, 45, 36, 27, 18

8) 15, 19, 23, 27, 31, 35, 39, 43

9) 65, 62, 59, 56, 53, 50, 47, 44

Writing Rules

M

Look at the numbers. Write the rule describing each pattern.

1) $-32, -24, -16, -8, 0, 8, 16, 24$

Start at -32 . Add 8 each time.

2) $-76, -64, -52, -40, -28, -16$

3) $44, 35, 26, 17, 8, -1, -10, -19$

4) $7, 22, 37, 52, 67, 82, 97, 112$

5) $-28, -22, -16, -10, -4, 2, 8, 14$

6) $-55, -52, -49, -46, -43, -40, -37$

7) $67, 53, 39, 25, 11, -3, -17, -31$

8) $21, 32, 43, 54, 65, 76, 87, 98$

9) $-65, -52, -39, -26, -13, 0, 13, 26$

Two-Rule Pattern

E

Identify the number pattern and fill in the missing numbers.

1)

2	5	3	6	4					
---	---	---	---	---	--	--	--	--	--

2)

23	24	26	27	29					
----	----	----	----	----	--	--	--	--	--

3)

14	11	13	10	12					
----	----	----	----	----	--	--	--	--	--

4)

2	6	7	11	12					
---	---	---	----	----	--	--	--	--	--

5)

11	13	16	18	21					
----	----	----	----	----	--	--	--	--	--

6)

1	2	8	9	15					
---	---	---	---	----	--	--	--	--	--

7)

4	9	13	18	22					
---	---	----	----	----	--	--	--	--	--

8)

3	5	9	11	15					
---	---	---	----	----	--	--	--	--	--

9)

12	10	15	13	18					
----	----	----	----	----	--	--	--	--	--

10)

8	12	13	17	18					
---	----	----	----	----	--	--	--	--	--

Two-Rule Pattern

M

Identify the number pattern and fill in the missing numbers.

1)

5	3	9	2	13					
---	---	---	---	----	--	--	--	--	--

2)

24	23	25	26	26					
----	----	----	----	----	--	--	--	--	--

3)

14	17	13	15	12					
----	----	----	----	----	--	--	--	--	--

4)

74	70	77	75	80					
----	----	----	----	----	--	--	--	--	--

5)

32	36	31	38	30					
----	----	----	----	----	--	--	--	--	--

6)

1	10	3	12	5					
---	----	---	----	---	--	--	--	--	--

7)

56	52	54	55	52					
----	----	----	----	----	--	--	--	--	--

8)

17	21	13	23	9					
----	----	----	----	---	--	--	--	--	--

9)

90	10	85	15	80					
----	----	----	----	----	--	--	--	--	--

10)

67	70	64	68	61					
----	----	----	----	----	--	--	--	--	--