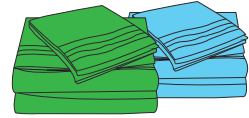
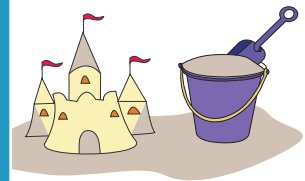


Subtracting Like Fractions

- 1) Jennifer visits the store to buy $\frac{1}{9}$ of a yard of a blue fabric and $\frac{4}{9}$ of a yard of green fabric to make new pillow covers for a doll house. How many more yards of green fabric did Jennifer buy than blue fabric?

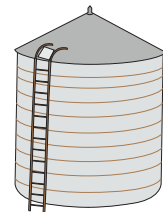


- 2) Keith and Lindsay are building sandcastles on the seashore. Keith collects $7\frac{1}{4}$ cups of sand in his bucket and Lindsay collects $5\frac{3}{4}$ cups of sand in her bucket. How many more cups of sand did Keith collect than Lindsay?



- 3) A water tank is full of water. If the capacity of the tank is 100 gallons and it is reduced by one-fifth, how many gallons of water are left in the tank?

How many gallons of water are left in the tank?



- 4) Nine-fifth of the animals in a pet store are dogs. How many more cats are there than dogs?

How many more cats are there than dogs?



- 5) Raleigh, NJ received $9\frac{2}{7}$ inches of snowfall on Christmas Eve. The town received $4\frac{5}{7}$ inches of snow on New Year's Day. How many more inches did it snow on Christmas Eve than New Year's Day?



PREVIEW

Gain complete access to the largest collection of worksheets in all subjects!

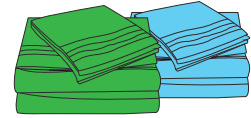
Members, please log in to download this worksheet.

Not a member? Please sign up to gain complete access.

www.mathworksheets4kids.com

Subtracting Like Fractions

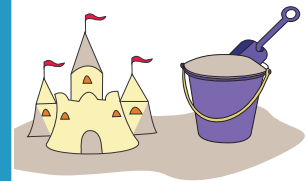
- 1) Jennifer visits the store to buy $\frac{1}{9}$ of a yard of a blue fabric and $\frac{4}{9}$ of a yard of green fabric to make new pillow covers for a doll house. How many more yards of green fabric did Jennifer buy than blue fabric?



$\frac{1}{3}$ yards more

- 2) Keith and Lindsay are building sandcastles on the seashore. Keith collects $7\frac{1}{4}$ cups of sand in his bucket and Lindsay collects $3\frac{1}{2}$ cups of sand in her bucket. How many more cups of sand did Keith collect than Lindsay?

$3\frac{1}{2}$ cups



- 3) A water tank is full of water. If $\frac{2}{3}$ of the capacity of the tank is reduced by one-third, how much of the capacity of the tank is left filled with water?

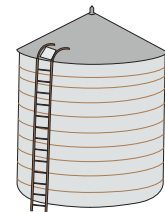
$\frac{2}{3}$ rds of the

Gain complete access to the largest collection of worksheets in all subjects!

Members, please log in to download this worksheet.

Not a member? Please sign up to gain complete access.

www.mathworksheets4kids.com



- 4) Nine-fifth of the dogs in a kennel are cats. How many more dogs than cats are there in the kennel?

$\frac{2}{5}$ th more dogs than cats



- 5) Raleigh, NJ received $9\frac{2}{7}$ inches of snowfall on Christmas Eve. The town received $4\frac{5}{7}$ inches of snow on New Year's Day. How many more inches did it snow on Christmas Eve than New Year's Day?

$4\frac{4}{7}$ inches of snow

