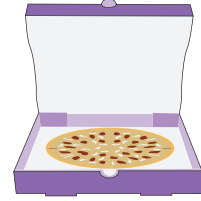


Name : _____

Adding Like Fractions

Sheet 2

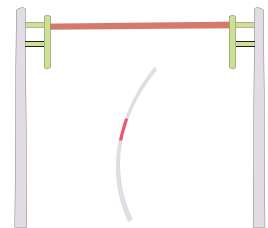
- 1) Amy and Jenny shared a pizza. Amy ate $\frac{1}{8}$ th of the pizza and Jenny consumed $\frac{3}{8}$ th of it. What fraction of the pizza did the girls eat in total?



- 2) Willy drank $\frac{1}{5}$ of a quart of milk on Sunday morning and $\frac{3}{5}$ of a quart of milk in the evening. How much milk did he drink in total?



- 3) Holly, a grade 4 student, has a piece of string that is $\frac{2}{3}$ meters long. She cut off $\frac{4}{3}$ meters of it. How long is the string left?

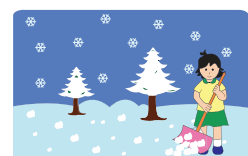


- 4) Cathy picked $\frac{13}{2}$ bushels of apples from a local farm. How many bushels of apples did she pick in total?

_____ bushels of apples from a local farm altogether?



- 5) After a winter storm, Sean shoveled $\frac{1}{4}$ inches of the snow from his driveway. Later, he shoveled $\frac{7}{4}$ inches of snow from the deck of his house. How many inches of snow did Sean clear up altogether?



PREVIEW

Gain complete access to the largest collection of worksheets in all subjects!

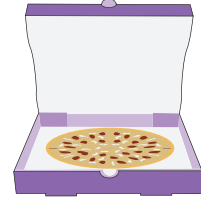
Members, please log in to download this worksheet.

Not a member? Please sign up to gain complete access.

www.mathworksheets4kids.com

Adding Like Fractions

- 1) Amy and Jenny shared a pizza. Amy ate $\frac{1}{8}$ th of the pizza and Jenny consumed $\frac{3}{8}$ th of it. What fraction of the pizza did the girls eat in total?



$\frac{1}{2}$ the pizza

- 2) Willy drank $\frac{1}{5}$ of a quart of milk on Sunday morning and $\frac{3}{5}$ of a quart of milk in the evening. How much milk did he drink in total?



$\frac{4}{5}$ th of a quart

- 3) Holly, a grade 4 student, has a ribbon that is $\frac{3}{4}$ meters long. She cut a piece that is $\frac{1}{4}$ meters long. How long is the remaining piece of ribbon?

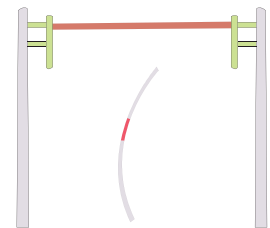
Gain complete access to the largest collection of worksheets in all subjects!

Members, please log in to download this worksheet.

Not a member? Please sign up to gain complete access.

www.mathworksheets4kids.com

and $\frac{4}{3}$ meters of it



- 4) Cathy picked $\frac{13}{2}$ pounds of apples from a local farm. How many pounds of apples did she pick in total?

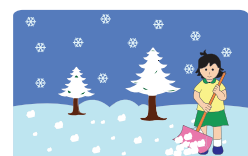
3 meters

in apples from a local farm altogether?



14 pounds of apples

- 5) After a winter storm, Sean shoveled $\frac{1}{4}$ inches of the snow from his driveway. Later, he shoveled $\frac{7}{4}$ inches of snow from the deck of his house. How many inches of snow did Sean clear up altogether?



2 inches of snow