

Name : _____

Score : _____

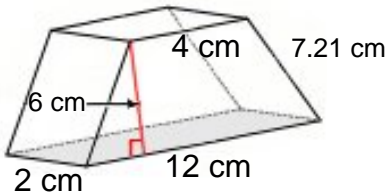
Teacher : _____

Date : _____

Surface Area of Prisms and Pyramids

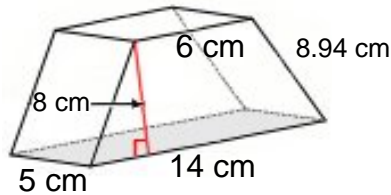
Find the surface area of each figure. Round answers to the nearest hundredth, if necessary.

1)



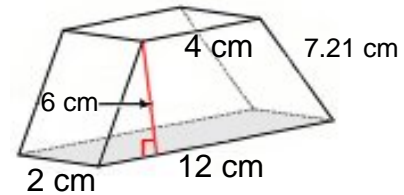
Surface Area: _____

2)



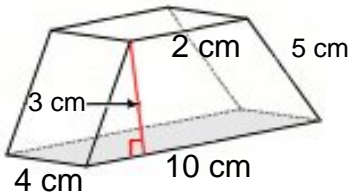
Surface Area: _____

3)



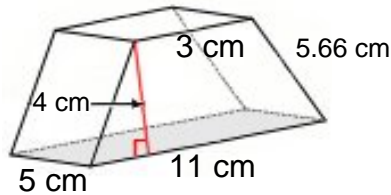
Surface Area: _____

4)



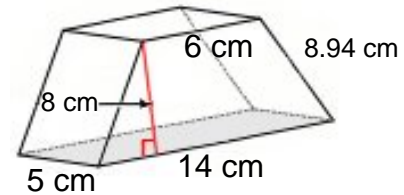
Surface Area: _____

5)



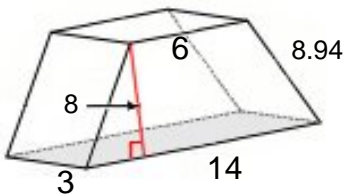
Surface Area: _____

6)



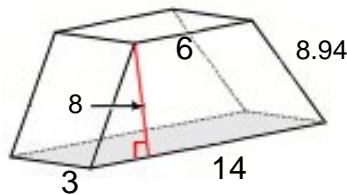
Surface Area: _____

7)



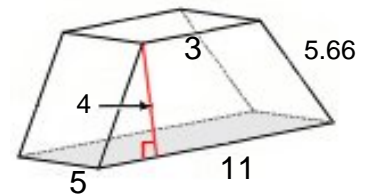
Surface Area: _____

8)



Surface Area: _____

9)



Surface Area: _____



Name : _____

Score : _____

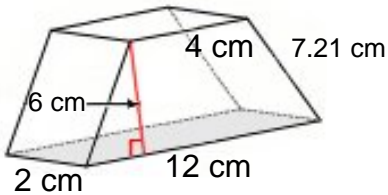
Teacher : _____

Date : _____

Surface Area of Prisms and Pyramids

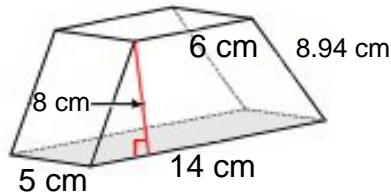
Find the surface area of each figure. Round answers to the nearest hundredth, if necessary.

1)



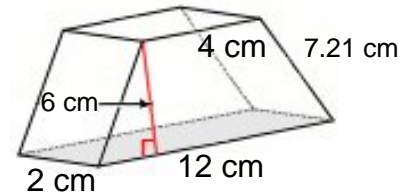
Surface Area: 156.84 cm²

2)



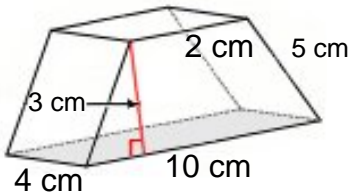
Surface Area: 349.40 cm²

3)



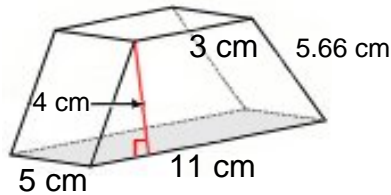
Surface Area: 156.84 cm²

4)



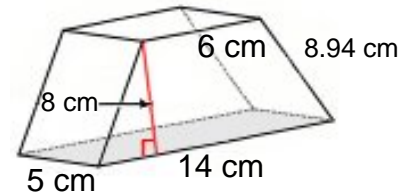
Surface Area: 124.00 cm²

5)



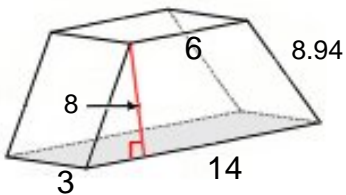
Surface Area: 182.60 cm²

6)



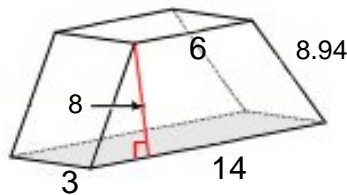
Surface Area: 349.40 cm²

7)



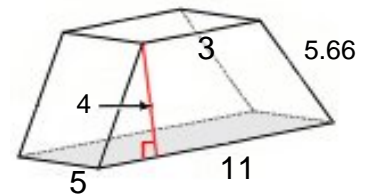
Surface Area: 273.64 cm²

8)



Surface Area: 273.64 cm²

9)



Surface Area: 182.60 cm²

