

## Functional Skills

# Mathematics

## Entry 3 - Sample

Fill in your name, date of birth and registration number in the boxes below.

Surname:	Other Names:
Gateway Qualifications registration number:	DOB:
Centre Name:	
<b>My signature confirms that I will not discuss the content of this assessment with anyone.</b>	
Signature:	

Paper Ref: <b>FSME3SA</b>	<b>Time: 1 hour</b>	<b>Marks Available:25</b>
<b>You must have:</b> Pen, Calculator, HB Pencil, Eraser, Calculator.		
<b>Total Marks</b>		/25
<b>Tutor Signature</b>		

### **Instructions for candidates**

- Answer all questions.
- Answer the questions in the spaces provided – there may be more space than you need.
- The total mark for this paper is 25.
- The marks for each question are shown - use this as a guide as to how much time to spend on each question.
- You must show clearly how you get your answers because marks will be awarded for your working out.
- Check your working and your answers at each stage.

Ali wants to make pizzas for his friends.

1 (a) He looks at a pack of pizza bases in the shop.

pack A

**2 for  
£2.50**

How much does each pizza base cost?  
*Show your working.*

(2 marks)

(b) He compares this pack with two other packs.

**2 for  
£2.50**

pack A

**70p  
each**

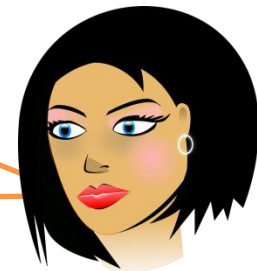
pack B

**4 for  
£6**

pack C

His friend Sam says:

Pack B has the  
cheapest pizza  
bases.



Is Sam right?  
*Show your working.*

(3 marks)

2. Ali asks his friends what they would like on their pizzas.

Here are the results.

topping	number of friends
onions	10
peppers	4
ham	18
mushrooms	6
sweetcorn	12
sausages	9
pineapple	5
tomatoes	15
cheese	18

a) What are the **4** most popular toppings? (2 marks)

---

---

---

---

(b) Ali asked 18 friends about their favourite toppings.

What fraction of his friends asked for sausages?

*Show your working.*

(2 marks)

(c) How can you check your answer to (b)?

*Show your checking.*

(1 mark)

3. Ali starts to make his pizzas.

He has these ingredients:

- 5 pizza bases
- tins of sauce
- 15 tomatoes
- 0.30kg cheese
- 4 onions
- 0.25kg ham
- 2 tins of sweetcorn.

(a) He shares out the tomatoes **equally** for each pizza base.

How many tomatoes does he use for each pizza base?

*Show your working.*

(2 marks)

(b) Which does he have more of - ham or cheese? How do you know? (2 marks)

(c) Ali will share his **5** pizzas equally between 20 people. What fraction of one pizza will each person have?

(2 marks)

4. Ali has three different tins of sauce for the pizza bases.



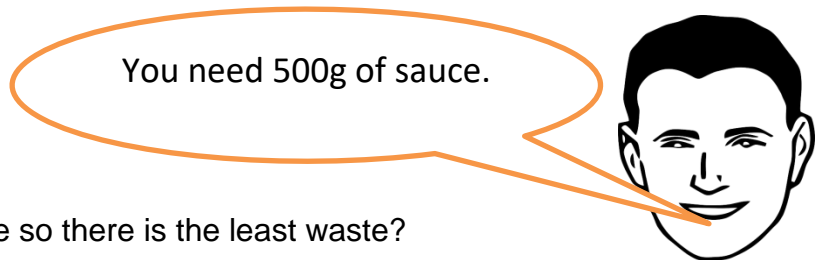
a) What shape are the tins? (1 mark)

---

(b) How much sauce does Ali have in total?  
*Show your working.* (2 marks)

(c) How much sauce does Ali have rounded to the nearest 100g?  
*Show your working.* (1 mark)

(d) Earl says:



Which two tins should Ali use so there is the least waste?

(1 mark)

5. Only **2** pizzas fit in Ali's oven at any one time. A single pizza takes **12 minutes** to cook.

(a) How long does it take him to cook **5** pizzas?

*Show your working.*

(3 marks)

(b) How can you check your answer to (a) is correct?

*Show your checking.*

(1 mark)

These texts and illustrations have been incorporated into this test paper solely for the purposes of the examination in accordance with Section 32 of the Copyright, Designs and Patents Act 1988, as amended by the Copyright and Rights in Performance (Research, Education, Libraries and Archives) Regulations 2014. No copyright or clearance for any other use has been obtained or sought.

**END OF ASSESSMENT**

Gateway Qualifications  
Gateway House  
3 Tollgate Business Park  
Colchester, CO3 8AB

**01206 911211**  
**[enquiries@gatewayqualifications.org.uk](mailto:enquiries@gatewayqualifications.org.uk)**  
**@GatewayQuals**