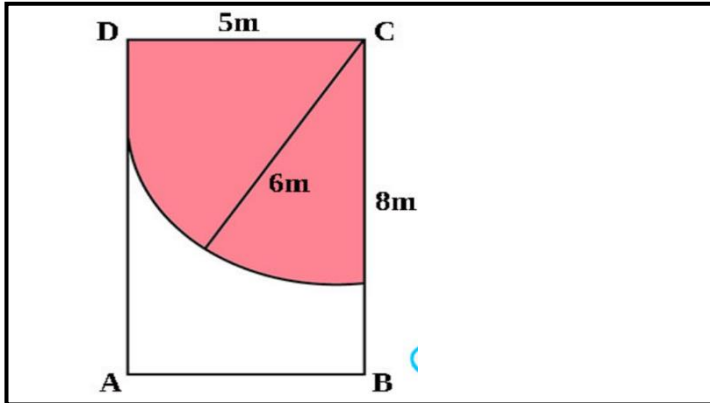


# ASSIGNMENT week 12

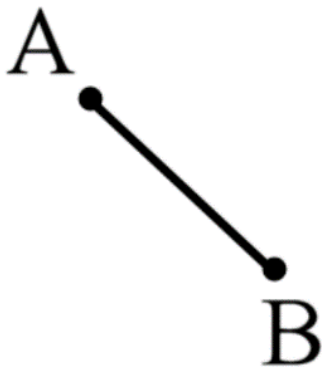


Draw all loci points (shade the area) on the image that is between 5m and 6m from point C and closer to line DC than line CB.

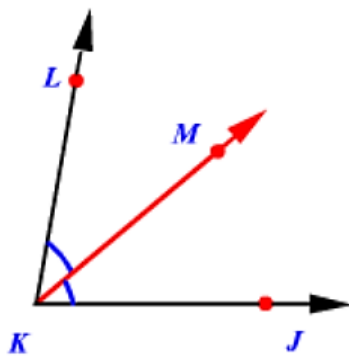


Measure the bearing from point C to point D.

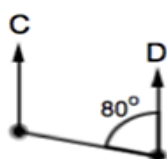
Measure the bearing from point D to point B.



Bisect the line AB.



Bisect angle LKM.



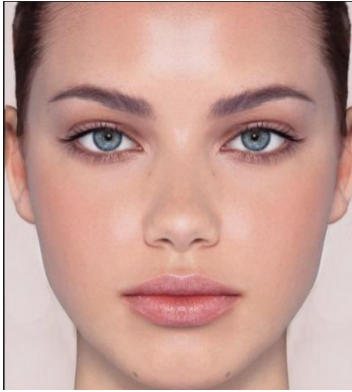
"The bearing of D from C is 080"

Is the statement shown on the left correct??...

If not show what the correct bearing should be.



Draw all the loci points that are exactly 1cm from the edge of the square.



Plot all the points that are equidistance from the centre of both eyes but nearer the chin than the nose.



Construct a rectangle using only a compass and ruler.



Create an exact 90degree perpendicular line from the ground line to the hot air balloon with only a compass and ruler.

Aims of this session: Review your abilities in each of these areas, Green (feel confident...G), Amber (need to work more on...A), Red (Feel weaker at this...R)

1. To be able to make accurate drawings of lines, angles and triangles using a ruler and a compass.
2. To be able to construct loci points using a compass
3. To be able to use a protractor to draw a bearing at a point or read/calculate a bearing.

<b>G</b>	<b>A</b>	<b>R</b>
<input type="checkbox"/>	<input type="checkbox"/>	<input type="checkbox"/>
<input type="checkbox"/>	<input type="checkbox"/>	<input type="checkbox"/>
<input type="checkbox"/>	<input type="checkbox"/>	<input type="checkbox"/>

MOSTLY GREEN

MOSTLY AMBER

MOSTLY RED