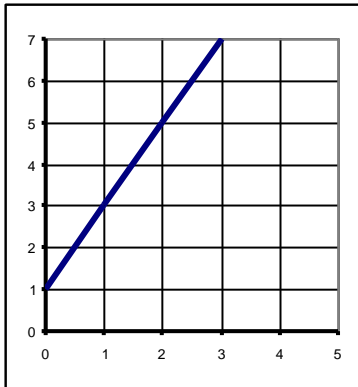




## Equation of a Straight Line

Below you have been given one of 4 pieces of information (graph, table of values, equation of the line, gradient and intercept). You must work out the other 3 missing pieces of information for each.

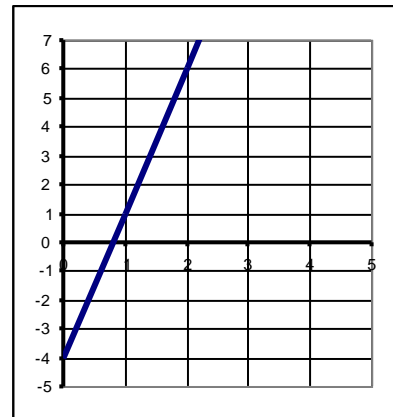


$$Y = 4x + 2$$

Gradient is 3

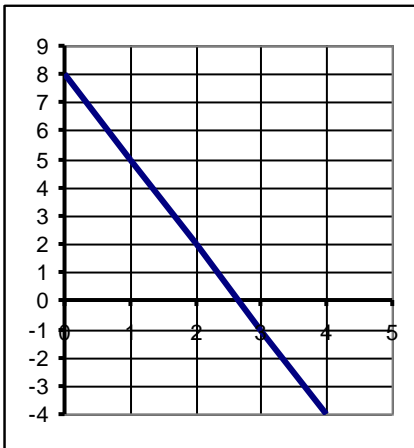
Intercept is 1

x	0	1	2	3	4
y	2	4	6	8	10



$$Y = 2x - 3$$

x	0	1	2	3	4
y	6	4	2	0	-2



Gradient is - 4

Intercept is 10

$$Y = 7 - 5x$$

x	0	2	4	6	8
y	3	4	5	6	7

